

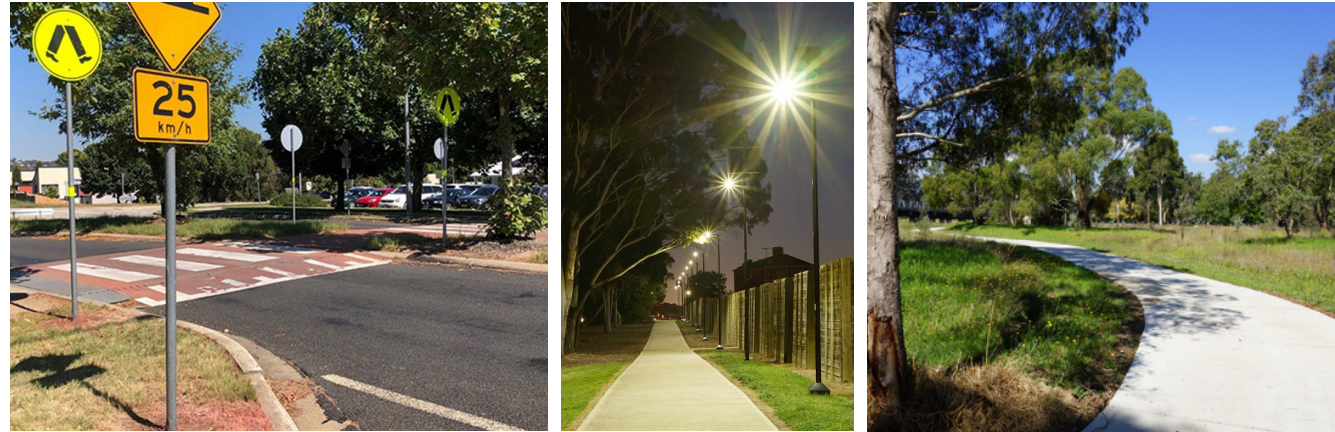
STRENGTHENING THE HEART OF PLAY

1.0 DESIGN PRINCIPLES

REVISION A

01 A connected and accessible network of parks

Creating walking and cycling connections that are designed for universal access

**02 A welcoming place for all to play, day and night**

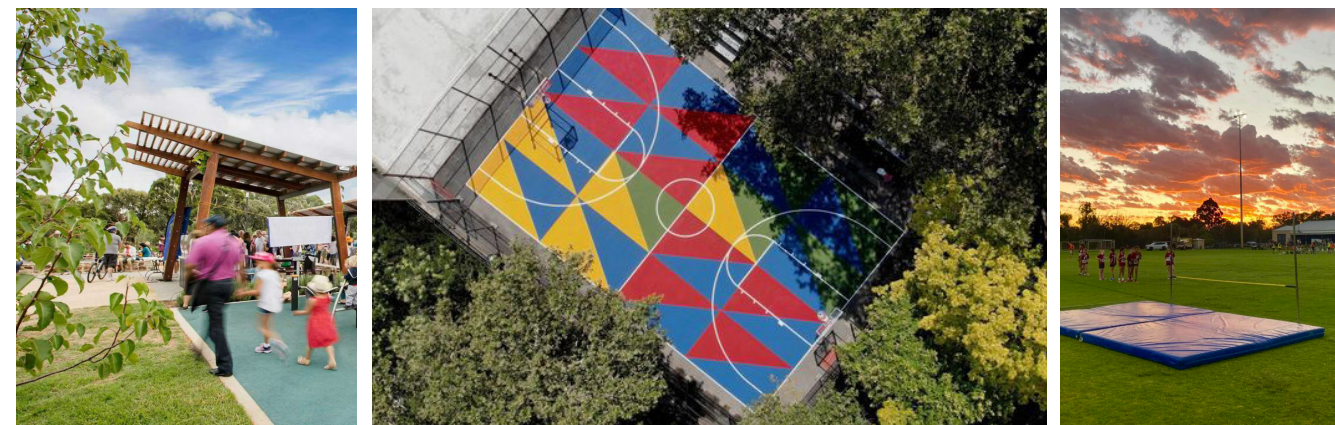
HoP is designing spaces to function as a communal backyard

**03 A healthy and sustainable environment**

Increasing tree canopy coverage and creating new ecological infrastructure for the community

**04 Improved spaces for active sport and recreation**

HoP is optimising sports facilities for the local community



OLD SALEYARDS RESERVE, BARTON PARK & PH JEFFREY RESERVE PRECEDENTS

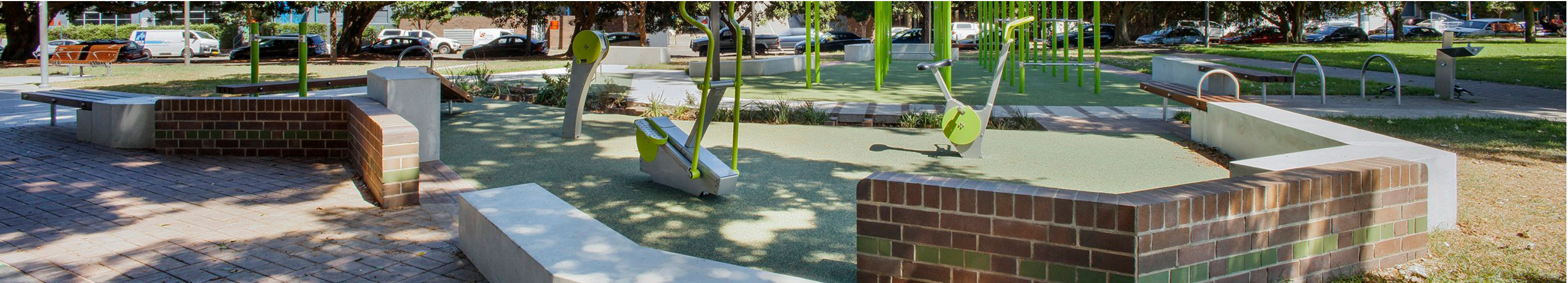
REVISION A



Indicative image of PH Jeffrey Pavilion Building



Proposed new shared paths to improve amenity



Proposed new fitness stations



Inclusive and universally accessible design



Large range of outdoor training opportunities



Ease of access to fitness equipment

SHERWIN PARK PRECEDENTS

REVISION A



Indicative accessible amenities building



Basketball court artwork



Improving the accessibility of the community garden



Improving the accessibility of the community garden



Improving shade and amenities with BBQ and seating opportunities

OLD SALEYARDS RESERVE - CONCEPT DESIGN

REVISION A

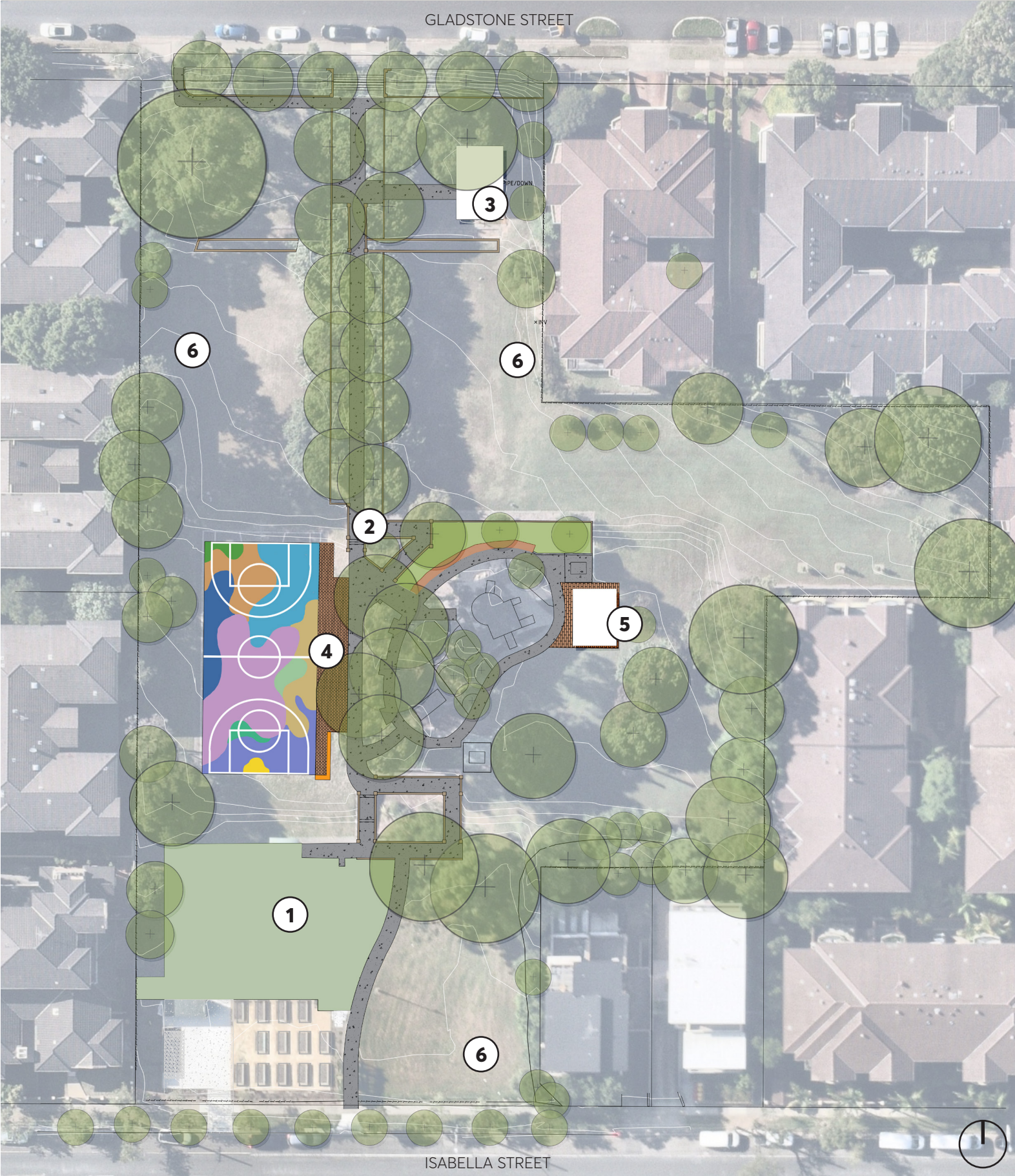


LEGEND

- | | | |
|--------------------------------------------------------|----------------------------------------------------------------|-------------------------------------------------------------------|
| 1 Proposed raised pedestrian and cycle crossing | 4 Proposed formalised carpark | 7 New tree planting |
| 2 Proposed 3m wide shared path | 5 Proposed fitness station | 8 Proposed grated board-walk path over existing tree roots |
| 3 Proposed 2.5m wide path | 6 Removal of security fencing & install of new bollards | 9 Proposed pedestrian path connection along Webb St |

SHERWIN PARK -CONCEPT DESIGN

REVISION A



LEGEND

- 1 Proposed expansion of existing community garden
- 2 Proposed refurbishment of existing path
- 3 Proposed new accessible amenities building
- 4 Proposed refurbishment and resurfacing of basketball court with additional seating
- 5 Proposed BBQ and picnic area
- 6 New tree planting

BARTON PARK & PH JEFFREY RESERVE - CONCEPT DESIGN

REVISION A



LEGEND

- 1 Upgraded fitness station
- 2 Proposed 2.5m wide accessible path
- 3 New sports-ground pavilion
- 4 Proposed carpark and DDA compliant parking
- 5 Proposed raised pedestrian and cycle crossing