



CARLINGFORD PARKLANDS

Landscape Concept Design



**CITY OF
PARRAMATTA**

Consultation Feedback (STAGE 1 - JULY 2024)

Basketball Hoops

"Basketball court would be good to give the teenagers and youths of the area a space to meet and stay active to promote good development. Also this would discourage anti-social behavior by giving teenagers something to do and somewhere to go"

"I am coaching basketball for a group of local kids every week after school. We would love to have a basketball ring in this park, just a small area to bounce balls and to throw balls into the ring"

"We desperately need a basketball ring. We have many kids, whole like throwing basketball into the ring, we don't need formal field just a couple of basketball rings to practice, to throw the ball in turns"

"The design for the Recreation Hub includes a multi-purpose court that accomodates 3 informal basketball courts as well as many other activities to occupy local teens. One of these hoops might be allocated as a netball hoop to ensure there is something for everyone!"

Children's Playground

"Children's playground with swings, slides and activities"

"I think a basketball court or bike riding friendly area for kids to learn or play with their bikes"

"Children's playground including children's bike track, exercise equipment, trees and some native gardens..."

"Instead of just a playground with a few pieces of kid's play equipment incorporating a themed and related play facility would inspire children's activities. Please provide appropriate shading and durable seating for supervisors/parents and a creative facility that appeals to a wide range of children aged 5-12"

"The concept for the children's playground includes a learn to ride track for bikes & scooters, swings, slides and themed imagination play. The playground also includes garden beds with plants and trees for natural shade. Shade sails are not proposed because future developments to the north will provide shade to the site in the near future"

Footpath network & Cricket Nets

"We would like the Council to move the footpath to the northern side of Boundary Rd to give us access to the land we previously had access to for our activities. The footpath is a danger when playing running games. We also want the cricket nets relocated away from their current location to make our Scout Hall safer and protect us from stray cricket balls and smashed windows"

"The temporary path will be removed and replaced with a concrete footpath located further to the west, this will allow a more consolidated area of open space for use by the Scouts and community. We are currently investigating relocating the existing cricket nets to the nearby Cox Park where they can be located adjacent the cricket field. This will be dependent on community feedback"

Green space and Native plants

"I would like to see places for my child to engage with plants, lie on the grass and kick a ball around on the grass"

"I support proposals that keep the green space accessible to everyone in the community and that build community spirit eg. picnic tables, native vegetation, walking and cycling paths"

"I would like to see an urban forest area planted, as well as significant sized trees to contribute to the urban tree canopy"

"The proposed design for the Carlingford Parklands aims to retain areas of turfed open space while also providing pockets of activity. Garden beds will be incorporated into the designs with predominantly native species as well as a number of mature trees spread across the parklands for shade, amenity and improved biodiversity"

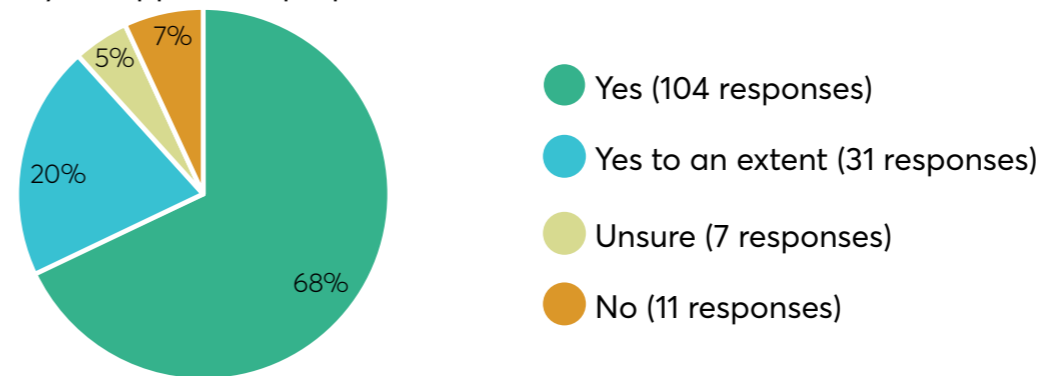
Dog Park

"I would love an off leash dog park - like the John Wearn park (a section for little dogs would be great)... can the area please have bins to help encourage people to keep it tidy"

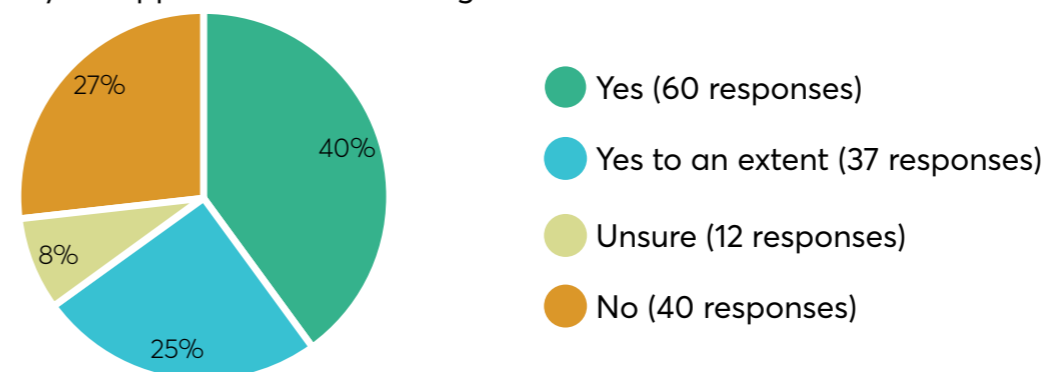
"I fully support and am an hopeful for an enclosed dog park area. Please could we have lighting for this, as so many adults that use the dog parks cannot attend until after work hours and into the evening"

"The proposed enclosed dog park design allows for separate fenced spaces for quiet and playful dogs so they can play at their own speeds. Dog waste bins will be provided at both entrances and we intend to allow for lighting for evening use however this is dependent on future detailed design and approvals"

Do you support the proposal?



Do you support the off leash dog area?



Landscape Concept



LEGEND

- ① 3m pedestrian/cycle sharepath connection from Shirley St towards light rail
- ② 1.5m pedestrian path linking Boundary Rd. Opportunity to create art walk with sandblasted design representing history or natural environment
- ③ Widened 2m pedestrian path linking Jenkins Rd & Thallon St
- ④ 3m pedestrian/cycle sharepath connection from Thallon St towards light rail
- ⑤ Potential location for outdoor fitness station
- ⑥ New mature native trees for buffer planting and amenity

*Note: All path alignments and widths are indicative and subject to detailed design and stakeholder approvals.

Thallon St Reserve Concept



DESIGN OBJECTIVE

Located between Thallon Street and Jenkins Road this site is surrounded by high density residential buildings and acts as a throughfare between the two roads.

The objective for this site is to create a shared community backyard or patio space that can cater to nearby residents who live in apartments and don't have the available space to host their families and neighbours. The space will create an intimate setting where people can get together in a social setting.

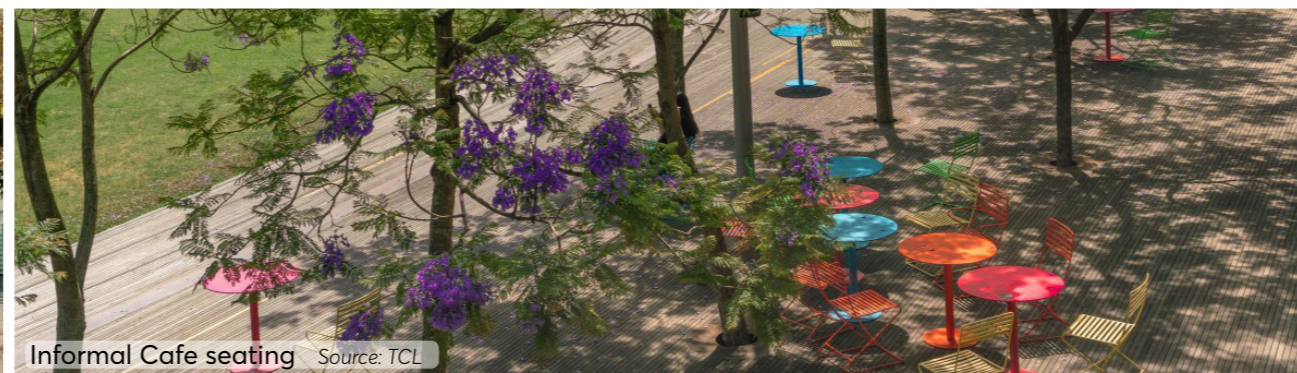
LEGEND

- ① Existing pathway connection widened to 2m
- ② New shelter with outdoor BBQ and preparation area
- ③ Picnic setting and informal Cafe style tables
- ④ Large communal table for family or neighbourhood gatherings
- ⑤ New garden beds and buffer planting
- ⑥ Existing seating area removed and seats re-used
- ⑦ New paved 'patio' space
- ⑧ Existing turf/soil repaired and replaced with shade tolerant species and irrigation
- ⑨ New bin on Thallon St
- ⑩ Existing light pole location
- ⑪ Existing garden beds and trees retained

Note:
Concept and inclusions are indicative only and subject to community consultation, detailed design and any relevant approvals.



Communal Table Source: White Arkitekter



Informal Cafe seating Source: TCL



Grass Open Space Source: Townshend Landscape Architects

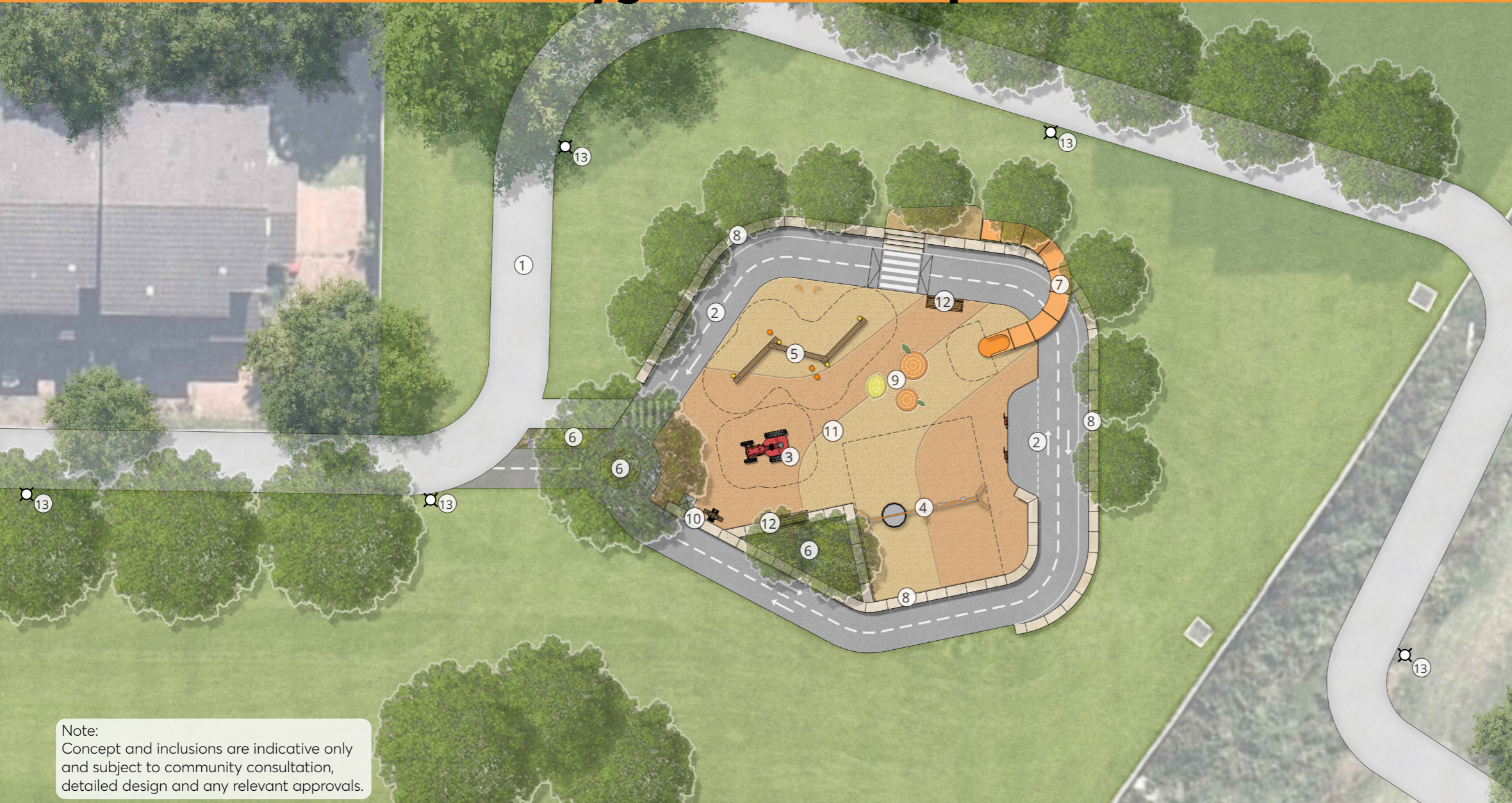


Communal Table & Informal Seating Source: Vestre



Outdoor BBQ under shelter Source: Christie

Thallon St Reserve Playground Concept



Note:
Concept and inclusions are indicative only and subject to community consultation, detailed design and any relevant approvals.

DESIGN OBJECTIVE

Located between Thallon Street and the Parramatta Light Rail property to the east, this property is bordered by high density residential to the south and low density to the north.

The objective for this site is to create a local playground catering to young children as well as an east-west pedestrian and cycling connection to the broader open space.

The playground will be themed around the area's history of fruit orchards and will feature a children's bike track, themed play elements, bench seating, swings & slides, rubber softfall mounds and garden beds with native trees and plants.

LEGEND

- ① New footpath/sharepath link Thallon St to Shirley St Reserve (subject to detailed design)
- ② Learn to ride track for bikes & scooters with linemarking, pedestrian crossings, round-a-bout, fueling station and 'traffic' signs
- ③ Themed imagination play element
- ④ Swing set with basket, toddler and standard seats
- ⑤ Nature play balance & climbing
- ⑥ Garden beds with native plants and trees
- ⑦ Tube slide from upper level
- ⑧ Retaining walls to create level space for playground
- ⑨ Themed rubber softfall mounds
- ⑩ Water Fountain & Bin
- ⑪ Coloured rubber softfall surfacing
- ⑫ Bench seats with back & armrests
- ⑬ Potential light pole locations



Learn to Ride track Source: Plunkett Homes

Themed play elements Source: PlayCo

Swing set with 3 different seats Source: PlayCo

Rubber softfall mounds Source: CODAworx

Shirley St Recreation Hub Concept



Note:
Concept and inclusions are indicative only and subject to community consultation, detailed design and any relevant approvals.

DESIGN OBJECTIVE

Located in Shirley St Reserve the recreation hub is located within a large area of open space and surrounded by high and medium density residential developments.

The objective for this site is to create a multi-purpose recreation space that can cater to teens as well as other members of the community. The space has been positioned to promote footpath connections throughout the parklands and to allow a consolidated area of green space to the east.

The recreation hub features a social space with picnic tables and informal seating, a multipurpose court that can be used for ball sports and performances and a space for active and line-marked play including handball, table tennis or badminton.

LEGEND

- ① Multi-use court with 3x informal basketball/netball courts and public art linemarking
- ② Linemarked play areas with opportunity for table tennis, handball and badminton etc.
- ③ Social seating space with picnic tables and water fountain under shelter
- ④ Retaining / seating wall
- ⑤ Mini Amphitheatre steps
- ⑥ Garden beds with native plants and trees
- ⑦ Raised timber seating deck
- ⑧ Concrete footpath linking from Boundary Rd
- ⑨ Steps for shortcut connection to Light Rail stop
- ⑩ Proposed lighting pole location
- ⑪ Consolidated open space



Informal Circular Court Source: Place Design Group



Multi-use areas Source: Žygimantas Cibulskis



Informal Social Seating Source: Easton Park



Public art Source: Minna Leunig x POPP



Linemarking Play Source: TCL

Lloyds Ave Dog Park Concept



Note:
Concept and inclusions are indicative only
and subject to community consultation,
detailed design and any relevant approvals.

DESIGN OBJECTIVE

Situated between Lloyds Avenue and Pennant Hills Road, the existing park is very linear in shape and has a number of significant existing trees.

The objective for this space is to create two fenced off-leash dog parks catering to both quiet and playful dogs. To improve pedestrian safety we are proposing two crossing points with pram ramps to the entrances.

The dog parks will feature dog waste bins, double gate entrances, bench seats, water fountain and the possibility for new lighting.

LEGEND

- ① New pedestrian crossing points on Lloyds Avenue with pram ramps
- ② Playful/Active Dog Area
- ③ Quiet Dog Area
- ④ Boundary Fence (Extra height along Pennant Hills Road)
- ⑤ Entry Point with double gates and dog waste bin
- ⑥ Maintenance Access
- ⑦ Bench seats
- ⑧ Proposed new lighting location
- ⑨ Internal pedestrian access gate between spaces



Dog waste bins & fencing Source: Parraparents



Dog double gate entries Source: City of Parramatta



Existing Site Source: City of Parramatta