



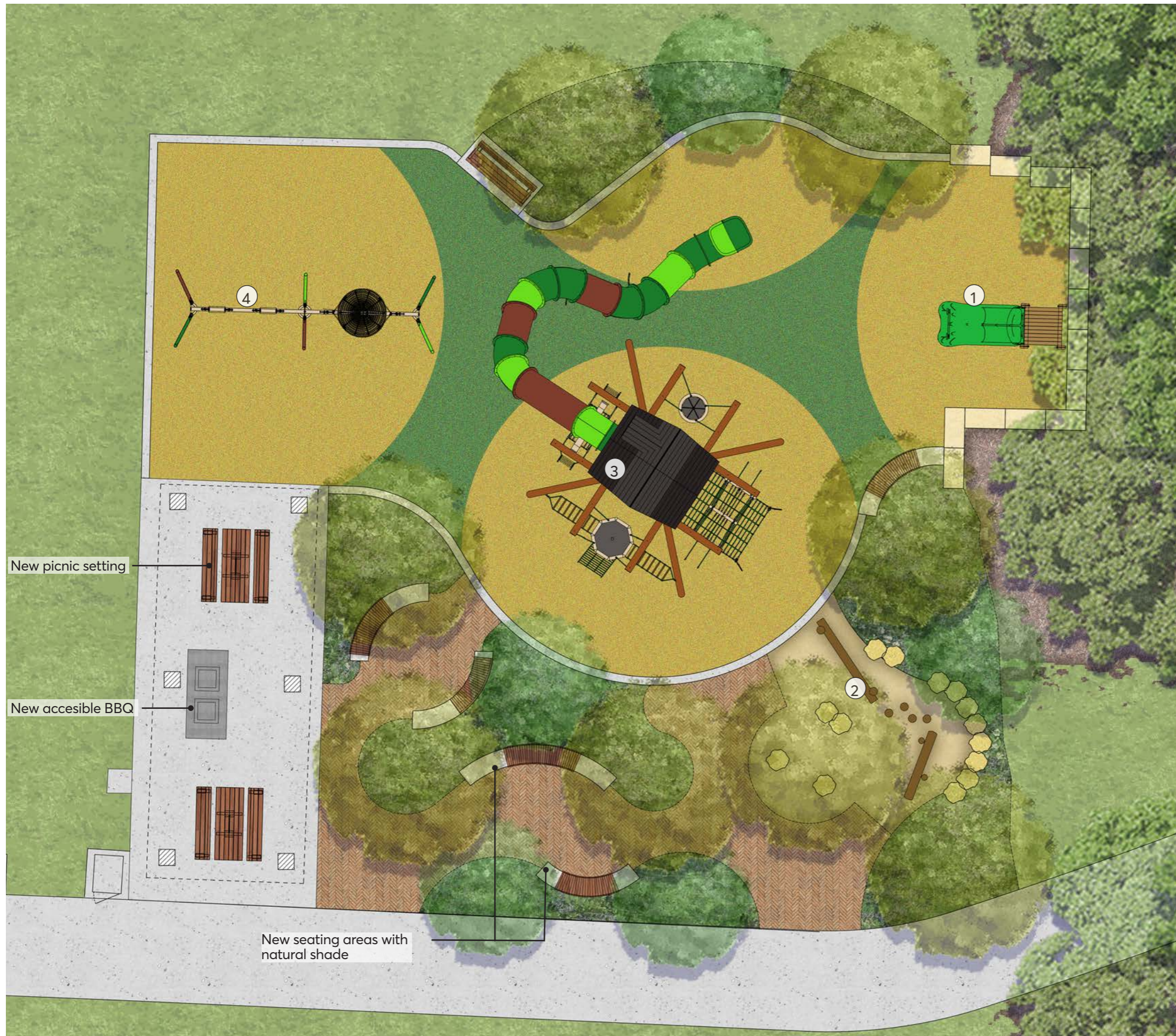


LEGEND

- ① Proposed playground upgrade including new play equipment for children aged between 2-14 year olds, a new embankment slide, nature play area, greater swings options and a multi functional play unit. Additional trees in and around the new playground are to provide additional shade coverage.
- ② The existing BBQ, shelter and furniture are to be retained. New seating options are to be provided as part of the playground upgrade.
- ③ Proposed new path (2.5m wide) and widened access paths to encourage activation, a comfortable walking experience and other exercise activities throughout the park.
- ④ Retention of the valued open grassed area in the central heart of the park. This will continue to provide space for informal ball sports, a grassed area for sitting in the sun and a run around space for families.
- ⑤ Proposed fitness equipment with a range of equipment offering a full body workout.
- ⑥ Retention of all existing significant trees. The existing trees and vegetation within the park are part of the 'Blue Gum High Forest'
- ⑦ Transform the existing open grass swale by planting sedges and native grasses to filter stormwater and enhance the value of the 'Blue Gum High Forest' ecology.
- ⑧ Additional seating opportunities spread throughout the park to ensure all areas are experienced and enjoyed.
- ⑨ New feature entry space at the Darwin Street frontage which includes widened pavement areas, new gates, a feature entry sign/wall and additional seating. This is to provide park identity, create a sense of arrival and provide a meeting place for visitors.
- ⑩ New and updated fencing, bollards and gates to the park frontage and entrances.
- ⑪ Proposed Fibre Reinforced Plastic boardwalk over existing tree roots of significant trees. This will ensure that the trees will stay healthy and prevent tree roots from lifting the path.

PRECEDENT IMAGES





Online Community Consultation Feedback

Do you support having more exciting and challenging play opportunities provided for children at the playground in Kilpack Park?

18 responses were received, with the respondents voting:

Yes – 17 (94.4%)

Yes, to an extent - 1 (5.6%)

What type of play options would you like to see delivered at Kilpack Park?

All 18 participants responded, and stated they wanted to see the following:

Natural and adventurous – 14 respondents

Active and dynamic – 12 respondents

Sliding and climbing – 11 respondents

Spinning, rocking and swinging – 9 respondents

Crawling and balancing – 8 respondents

Do you have any additional comments for Council to consider in relation to the upgrade of the playground in Kilpack Park?

15 responses were received for this question. In summary, the participants expressed the desire for:

- An all-ages play area where adults can play with their toddlers
- Gates and fencing around the playground
- More shade and canopy cover
- Inclusive and accessible play areas (including getting to the play area)
- Adult exercise equipment

Respondents were asked to provide any additional comments.

"Would love to see some equipment for the carers to join in the play. When children see adults modelling how to play and have fun, we create better communities and healthier citizens."

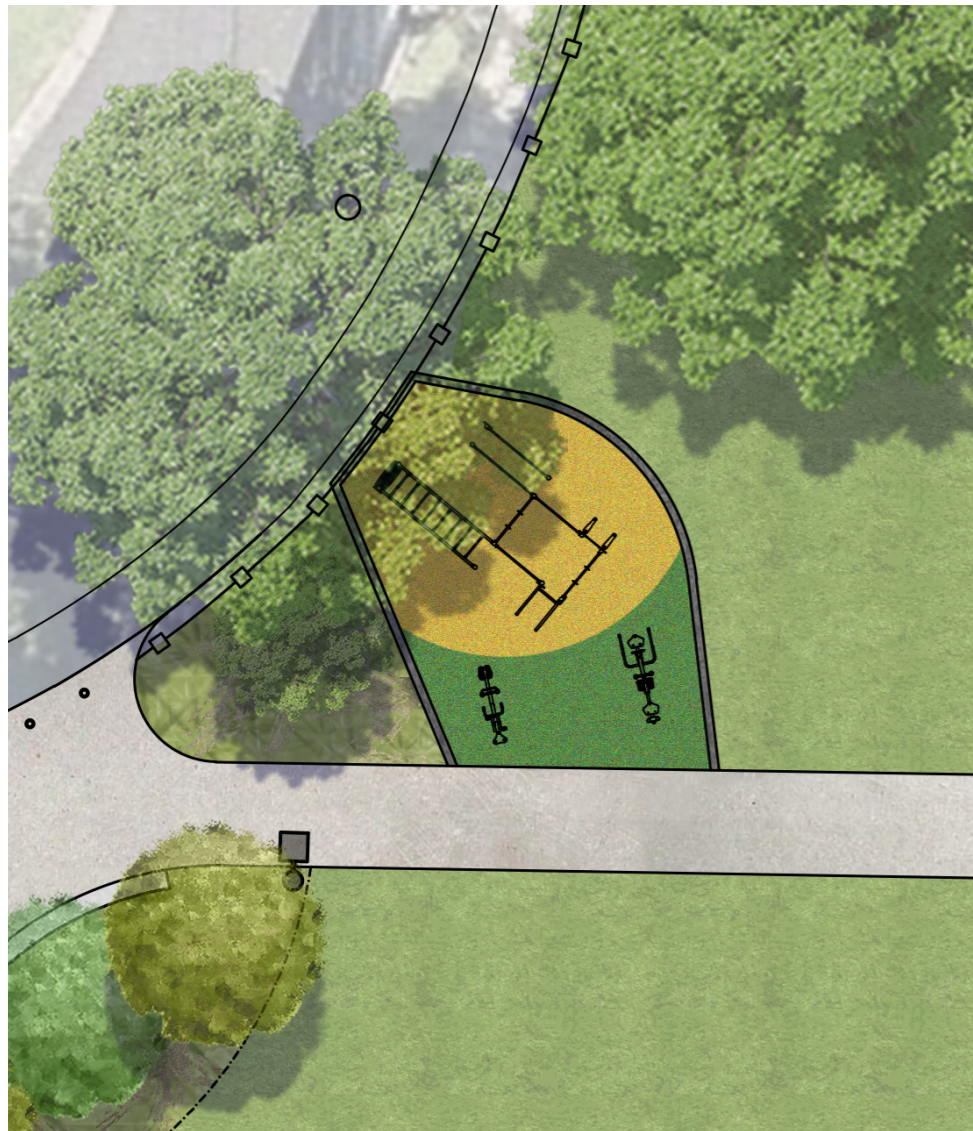
"That is fantastic idea to upgrade this community park, I am living in 15 minutes walking distance to the park. Our family will definitely visit the park more often if more facility is there."

"Options for older as well as younger kids would be good"

"It should not be the typical order of a composite play structure from a catalogue. It should provide opportunities for children to use the playground flexibly to meet their interests and ability. Natural elements should be a key feature and these should be able to be incorporated into the children's play. Challenging and risky play should be promoted. It should also be inclusive which goes beyond just being accessible"



Artist Impression of Play Equipment. Please note that layout of the playground and play equipment are indicative only. Final layout and equipment may change.



Proposed fitness equipment layout with a range of equipment offering a full body workout.



Artist Impression of Fitness Equipment. Please note the layout and equipment are indicative only. Final layout and equipment may change.