

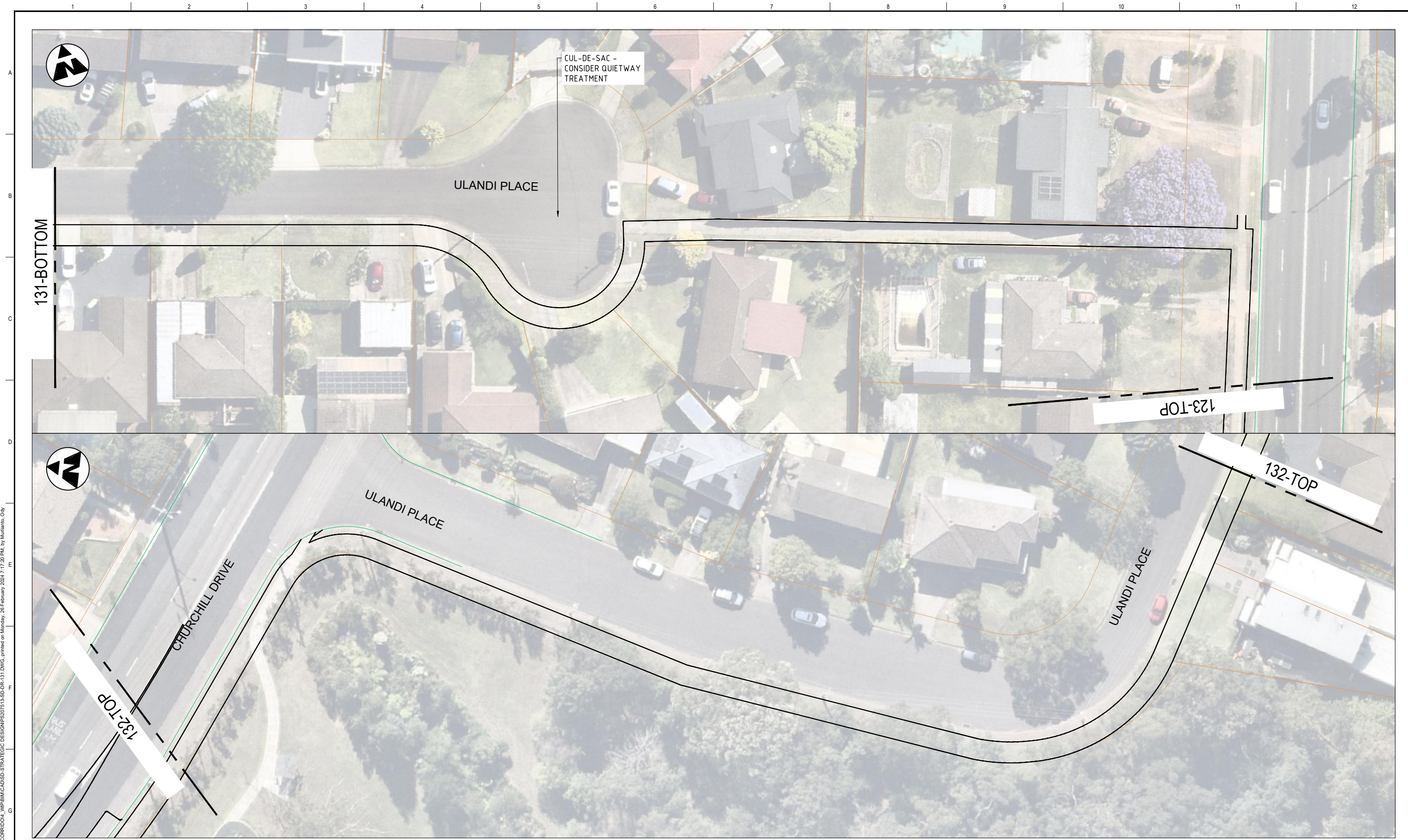
LOCALITY PLAN

Legend

- Separated Path
- Shared Path
- Refuge island
- Signalised crossing

REFERENCE COORDINATION DRAWINGS DESCRIPTION DRAWING NO. REV CHK		SCALES A3 ORIGINAL DO NOT SCALE THIS DRAWING		CLIENT: CITY OF PARRAMATTA 126 Church Street PARRAMATTA NSW 2150 Tel: +61 2 9806 5050 www.cityofparramatta.nsw.gov.au		DRAWING STATUS: STRATEGIC DESIGN DESIGNED: ODY MURLIANTO CHECKED: RICHARD WEST APPROVED: GARETH MILLS PROJECT No: PS207513 DRAWN: ODY MURLIANTO DATE: 08.04.2024 DRAWING No: PS207513-SD-DR-130 REV: A		
SURVEY DATUM HORIZONTAL DATUM VERTICAL DATUM		APPROVED SIGNED: _____ DATE: _____ RREQ: _____		PROJECT: CITY OF PARRAMATTA NORTHMEAD BICYCLE LINKS CHURCHILL DRIVE STRATEGIC DESIGN COVER SHEET		© WSP Australia Pty Ltd.		
08.04.2024 O.M. COVER PAGE R.W. G.M.	SURVEY DATUM HORIZONTAL DATUM VERTICAL DATUM		APPROVED SIGNED: _____ DATE: _____ RREQ: _____		PROJECT: CITY OF PARRAMATTA NORTHMEAD BICYCLE LINKS CHURCHILL DRIVE STRATEGIC DESIGN COVER SHEET		© WSP Australia Pty Ltd.	

File name: U:\PROJECTS\207513_SD\DR_130.DWG, printed on Tuesday, 9 April 2024 10:28:01 AM, by Murlianto, City



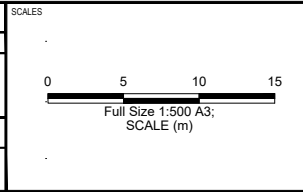
PLAN
SCALE 1:500

LEGEND

	EXISTING FEATURES
	PROPOSED FEATURES
	REMOVED FEATURES

REV	DATE	BY	DESCRIPTION	CHK	APPD
A	26.02.2024	G.M.	PRELIMINARY FOR TRAFFIC COMMITTEE	R.W.	G.M.

REFERENCE COORDINATION DRAWINGS			
DESCRIPTION	DRAWING NO.	REV	CHK
SURVEY DATUM			
HORIZONTAL DATUM		VERTICAL DATUM	



A3 ORIGINAL
DO NOT SCALE THIS DRAWING

SIGNED: _____

APPROVED: _____

DATE: _____ RREQ: _____

© WSP Australia Pty Ltd.

Level 27, 680 George Street, Sydney
GPO Box 5394, NSW 2001, Australia
Tel: +61 2 9272 5100 Fax: +61 2 9272 5101
wsp.com

CLIENT:

126 Church Street
PARRAMATTA NSW 2150
Tel: +61 2 9806 5050
www.cityofparramatta.nsw.gov.au

NOTE:
1. THIS STRATEGIC ROAD DESIGN AND ASSOCIATED DELINEATION HAVE BEEN PREPARED TO SUPPORT DISCUSSIONS WITH RELEVANT STAKEHOLDERS, PRELIMINARY INVESTIGATIONS AND REPORT.
2. EXISTING CONDITIONS ARE TRANSLATED FROM AN AERIAL IMAGERY ONLY WITH LIMITED ACCURACY.

PROJECT:
CITY OF PARRAMATTA
NORTHMEAD BICYCLE LINKS
CHURCHILL DRIVE STRATEGIC DESIGN
GENERAL ARRANGEMENT PLAN

DRAWING STATUS:

STRATEGIC DESIGN

DESIGNED: ODY MURLIANTO	CHECKED: RICHARD WEST	APPROVED: GARETH MILLS
PROJECT No: PS207513	DRAWN: ODY MURLIANTO	DATE: 26.02.2024
DRAWING No: PS207513-SD-DR-131		REV: A

File name: U:\PROJECTS\2024\02\03\07\13_KLEINS_ROAD_CORRIDOR\4_WPB\BIM\A3\SD-STRATEGIC DESIGN\PS207513-SD-DR-131.DWG, printed on Monday, 26 February 2024 7:17:20 PM, by Murlianto, Ody



PLAN
SCALE 1:500

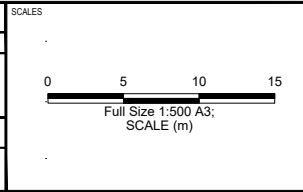
LEGEND

	EXISTING FEATURES
	PROPOSED FEATURES
	REMOVED FEATURES

File name: U:\PROJECTS\2024\02\03\07\13_KLEINS_ROAD_CORRIDOR\WPB\IMC\A3\SD-STRATEGIC DESIGN\PS207513-SD-DR-132.DWG, printed on Monday, 26 February 2024 7:24:38 PM, by Mudiandis, Cdy

DATE	BY	DESCRIPTION
26.02.2024	O.M.	PRELIMINARY FOR TRAFFIC COMMITTEE

REFERENCE COORDINATION DRAWINGS			
DESCRIPTION	DRAWING NO.	REV	CHK
SURVEY DATUM			
HORIZONTAL DATUM	VERTICAL DATUM		



A3 ORIGINAL
DO NOT SCALE THIS DRAWING

SIGNED: _____

APPROVED: _____

DATE: _____ RREQ: _____

© WSP Australia Pty Ltd.

Level 27, 680 George Street, Sydney
GPO Box 3394, NSW 2001, Australia
Tel: +61 2 9272 5100 Fax: +61 2 9272 5101
wsp.com

CLIENT:

126 Church Street
PARRAMATTA NSW 2150
Tel: +61 2 9806 5050
www.cityofparramatta.nsw.gov.au

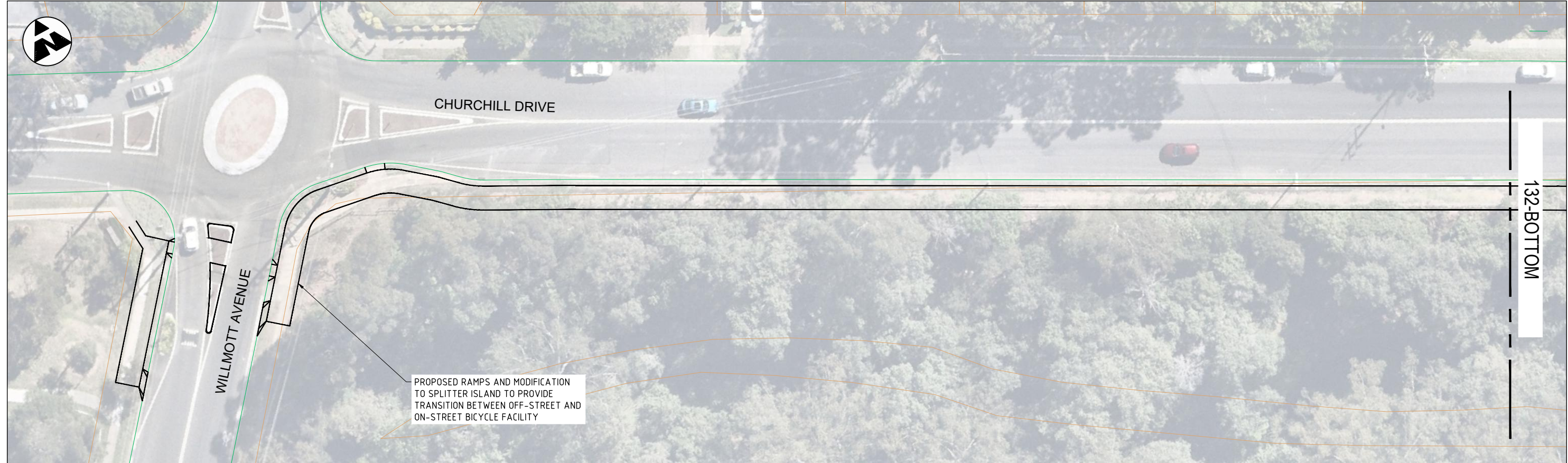
NOTE:

- THIS STRATEGIC ROAD DESIGN AND ASSOCIATED DELINEATION HAVE BEEN PREPARED TO SUPPORT DISCUSSIONS WITH RELEVANT STAKEHOLDERS, PRELIMINARY INVESTIGATIONS AND REPORT.
- EXISTING CONDITIONS ARE TRANSLATED FROM AN AERIAL IMAGERY ONLY WITH LIMITED ACCURACY.

PROJECT: CITY OF PARRAMATTA
NORTHMEAD BICYCLE LINKS
CHURCHILL DRIVE STRATEGIC DESIGN
GENERAL ARRANGEMENT PLAN

DRAWING STATUS: STRATEGIC DESIGN

DESIGNED: ODY MURLIANTO	CHECKED: RICHARD WEST	APPROVED: GARETH MILLS
PROJECT No: PS207513	DRAWN: ODY MURLIANTO	DATE: 26.02.2024
DRAWING No: PS207513-SD-DR-132		REV: A



PLAN
SCALE 1:500

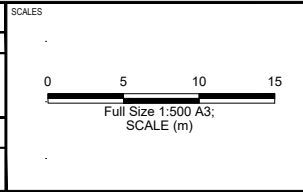
LEGEND

	EXISTING FEATURES
	PROPOSED FEATURES
	REMOVED FEATURES

File name: U:\PROJECTS\2024\02\03\03713_KLEINS_ROAD_CORRIDOR\WPB\BIM\CAD\SD-STRATEGIC DESIGN\PS207513-SD-DR-133.DWG, printed on Monday, 26 February 2024 7:17:36 PM, by Murlianto, Ody

REV	DATE	BY	DESCRIPTION	CHK	APPD
A	26.02.2024	O.M.	PRELIMINARY FOR TRAFFIC COMMITTEE	R.W.	G.M.

REFERENCE COORDINATION DRAWINGS			
DESCRIPTION	DRAWING NO.	REV	CHK
SURVEY DATUM			
HORIZONTAL DATUM	VERTICAL DATUM		



A3 ORIGINAL
DO NOT SCALE THIS DRAWING

SIGNED: _____

APPROVED: _____

DATE: _____

REQ: _____

© WSP Australia Pty Ltd.

Level 27, 680 George Street, Sydney
GPO Box 3394, NSW 2001, Australia
Tel: +61 2 9272 5100 Fax: +61 2 9272 5101
wsp.com

CLIENT:

126 Church Street
PARRAMATTA NSW 2150
Tel: +61 2 9806 5050
www.cityofparramatta.nsw.gov.au

NOTE:
1. THIS STRATEGIC ROAD DESIGN AND ASSOCIATED DELINEATION HAVE BEEN PREPARED TO SUPPORT DISCUSSIONS WITH RELEVANT STAKEHOLDERS, PRELIMINARY INVESTIGATIONS AND REPORT.
2. EXISTING CONDITIONS ARE TRANSLATED FROM AN AERIAL IMAGERY ONLY WITH LIMITED ACCURACY.

PROJECT:
CITY OF PARRAMATTA
NORTHMEAD BICYCLE LINKS
CHURCHILL DRIVE STRATEGIC DESIGN
GENERAL ARRANGEMENT PLAN

DRAWING STATUS: **STRATEGIC DESIGN**

DESIGNED: ODY MURLIANTO	CHECKED: RICHARD WEST	APPROVED: GARETH MILLS
PROJECT No: PS207513	DRAWN: ODY MURLIANTO	DATE: 26.02.2024
DRAWING No: PS207513-SD-DR-133		REV: A