

LOCALITY PLAN

Legend

- Separated Path
- Shared Path
- Shared Crossing
- Signalised crossing

08.04.2024	O.M.	COVER PAGE	R.W.	G.M.	
REV	DATE	BY	DESCRIPTION	CHK	APPD

REFERENCE COORDINATION DRAWINGS			
DESCRIPTION	DRAWING NO.	REV	CHK
SURVEY DATUM			
HORIZONTAL DATUM:		VERTICAL DATUM:	

SCALES

A3 ORIGINAL
DO NOT SCALE THIS DRAWING

SIGNED: _____

APPROVED: _____

DATE: _____

REQ: _____

© WSP Australia Pty Ltd.

Level 27, 680 George Street, Sydney
GPO Box 6394, NSW 2001, Australia
Tel: +61 2 9272 5100 Fax: +61 2 9272 5101
wsp.com

CLIENT:

126 Church Street
PARRAMATTA NSW 2150
Tel: +61 2 9806 5050
www.cityofparramatta.nsw.gov.au

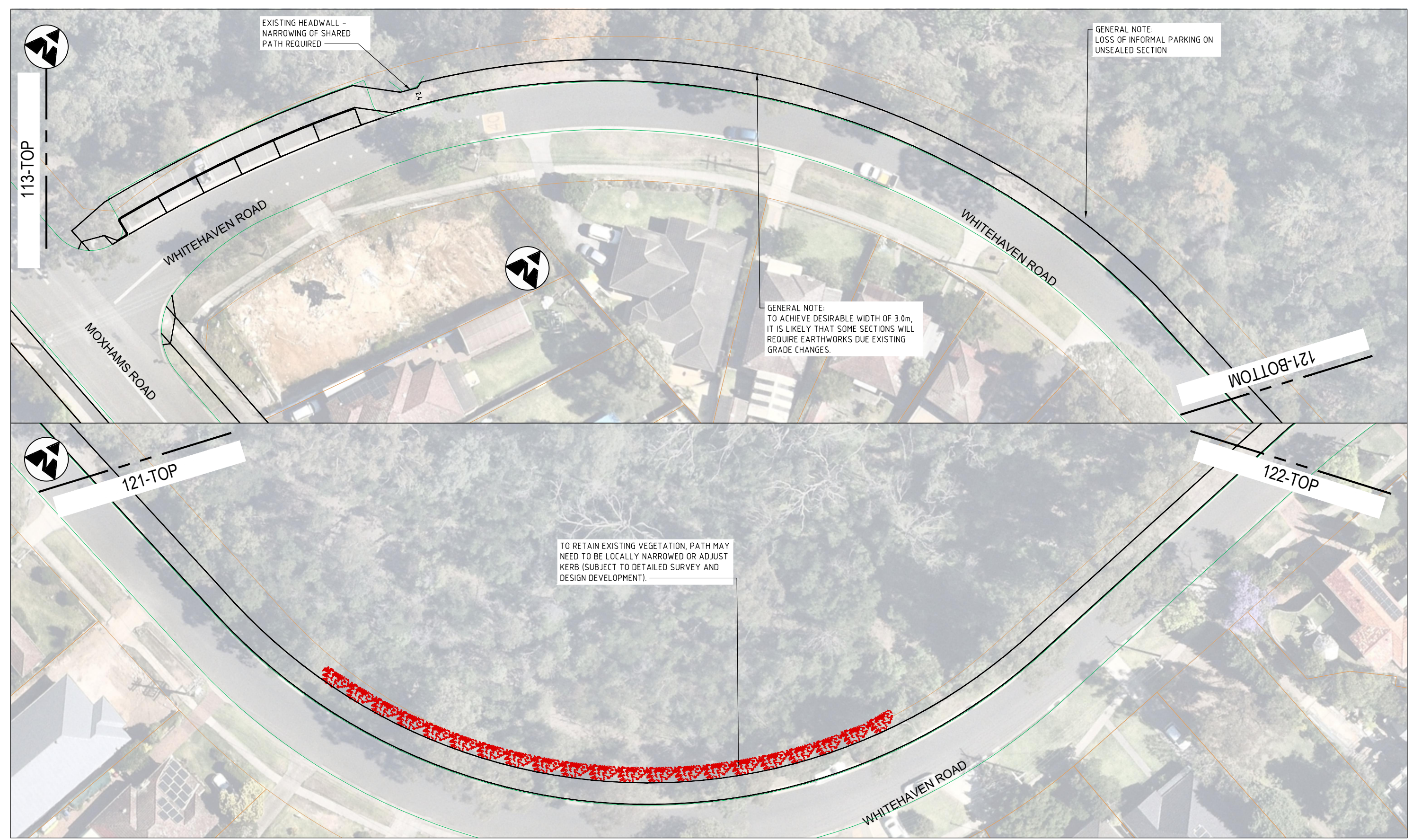
PROJECT:

CITY OF PARRAMATTA
NORTHMEAD BICYCLE LINKS
WHITEHAVEN ROAD STRATEGIC DESIGN
COVER SHEET

DRAWING STATUS: **STRATEGIC DESIGN**

DESIGNED: ODY MURLIANTO	CHECKED: RICHARD WEST	APPROVED: GARETH MILLS
PROJECT No: PS207513	DRAWN: ODY MURLIANTO	DATE: 08.04.2024
DRAWING No: PS207513-SD-DR-120		REV: A

File name: U:\PROJECTS\2024\03\03\03\13_KLEINS_ROAD_COORRIDA_WPB\BIMCAD\SD-STRATEGIC DESIGN\PS207513-SD-DR-120.DWG, printed on Tuesday, 9 April 2024 10:27:48 AM, by Murlianto, City



PLAN
SCALE 1:500

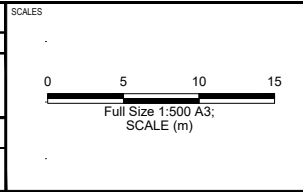
LEGEND

	EXISTING FEATURES
	PROPOSED FEATURES
	REMOVED FEATURES

REV	DATE	BY	DESCRIPTION	CHK	APPD
A	26.02.2024	O.M.	PRELIMINARY FOR TRAFFIC COMMITTEE	R.W.	G.M.

REFERENCE COORDINATION DRAWINGS

DESCRIPTION	DRAWING NO.	REV	CHK
SURVEY DATUM			
HORIZONTAL DATUM:		VERTICAL DATUM:	



A3 ORIGINAL
DO NOT SCALE THIS DRAWING

SIGNED: _____
APPROVED

DATE: _____ RREQ: _____

© WSP Australia Pty Ltd.

Level 27, 680 George Street, Sydney
GPO Box 5394, NSW 2001, Australia
Tel: +61 2 9272 5100 Fax: +61 2 9272 5101
wsp.com

CLIENT: **CITY OF PARRAMATTA**

126 Church Street
PARRAMATTA NSW 2150
Tel: +61 2 9806 5050
www.cityofparramatta.nsw.gov.au

NOTE:
1. THIS STRATEGIC ROAD DESIGN AND ASSOCIATED DELINEATION HAVE BEEN PREPARED TO SUPPORT DISCUSSIONS WITH RELEVANT STAKEHOLDERS. PRELIMINARY INVESTIGATIONS AND REPORT.
2. EXISTING CONDITIONS ARE TRANSLATED FROM AN AERIAL IMAGERY ONLY WITH LIMITED ACCURACY.

PROJECT: **CITY OF PARRAMATTA
NORTHMEAD BICYCLE LINKS
WHITEHAVEN ROAD STRATEGIC DESIGN
GENERAL ARRANGEMENT PLAN**

DRAWING STATUS: STRATEGIC DESIGN

DESIGNED: ODY MURLIANTO	CHECKED: RICHARD WEST	APPROVED: GARETH MILLS
PROJECT No: PS207513	DRAWN: ODY MURLIANTO	DATE: 26.02.2024
DRAWING No: PS207513-SD-DR-121		REV: A



PLAN
SCALE 1:500

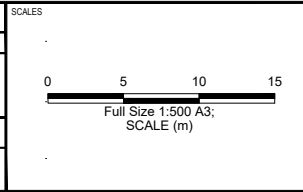
LEGEND

	EXISTING FEATURES
	PROPOSED FEATURES
	REMOVED FEATURES

File name: U:\PROJECTS\2024\02\03\07\13_KLEINS_ROAD_CORRIDOR\WP\BIM\A3\SD-STRATEGIC DESIGN\PS207513-SD-DR-122.DWG, printed on Monday, 26 February 2024 7:17:42 PM, by Murlianto, City

DATE	BY	DESCRIPTION	CHK	APPD
26.02.2024		PRELIMINARY FOR TRAFFIC COMMITTEE		

REFERENCE COORDINATION DRAWINGS			
DESCRIPTION	DRAWING NO.	REV	CHK
SURVEY DATUM			
HORIZONTAL DATUM		VERTICAL DATUM	



A3 ORIGINAL
DO NOT SCALE THIS DRAWING

SIGNED: _____

APPROVED: _____

DATE: _____ RREQ: _____

© WSP Australia Pty Ltd.

Level 27, 690 George Street, Sydney
GPO Box 6394, NSW 2001, Australia
Tel: +61 2 9272 5100 Fax: +61 2 9272 5101
wsp.com

CLIENT:

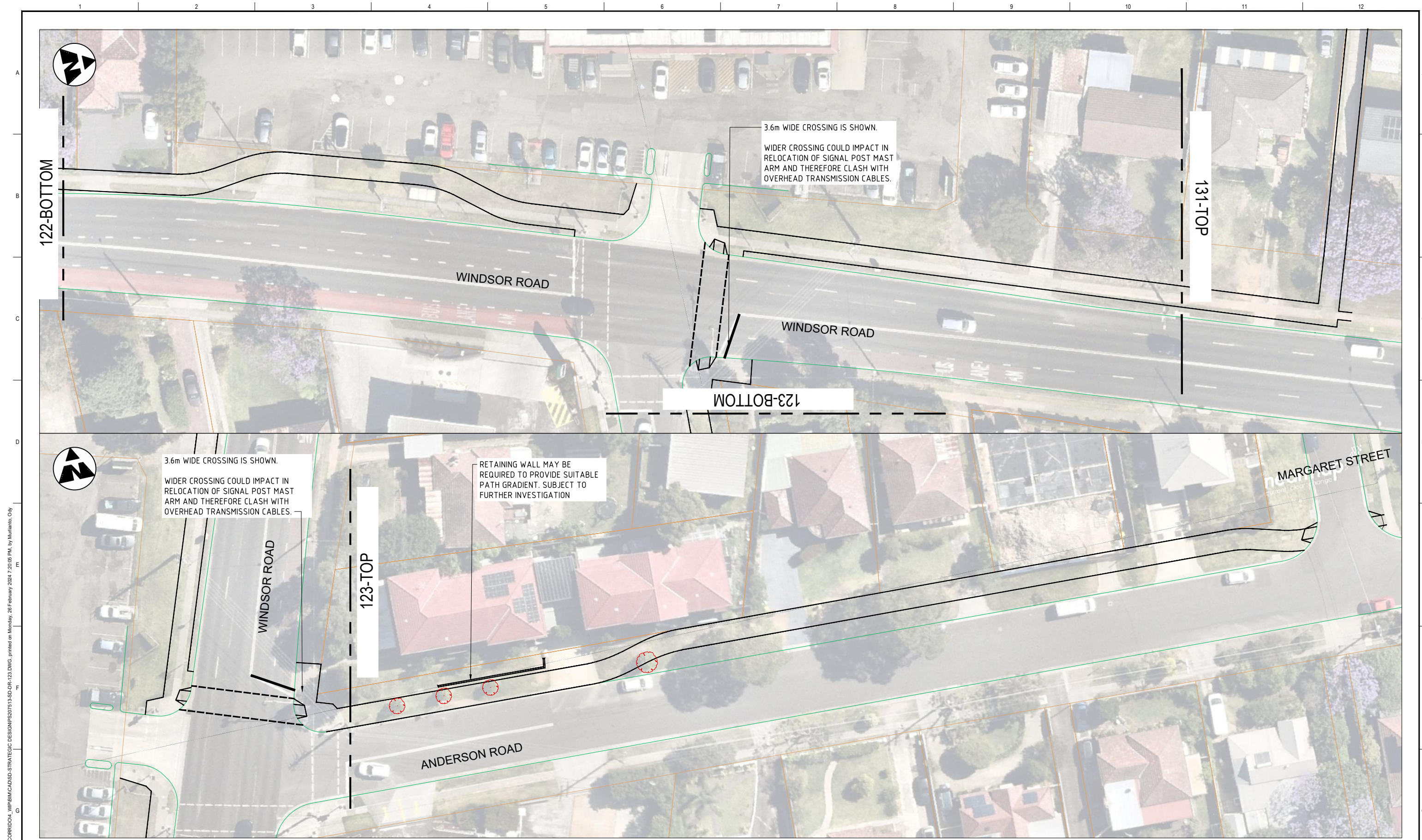
126 Church Street
PARRAMATTA NSW 2150
Tel: +61 2 9806 5050
www.cityofparramatta.nsw.gov.au

NOTE:
1. THIS STRATEGIC ROAD DESIGN AND ASSOCIATED DELINEATION HAVE BEEN PREPARED TO SUPPORT DISCUSSIONS WITH RELEVANT STAKEHOLDERS, PRELIMINARY INVESTIGATIONS AND REPORT.
2. EXISTING CONDITIONS ARE TRANSLATED FROM AN AERIAL IMAGERY ONLY WITH LIMITED ACCURACY.

PROJECT:
CITY OF PARRAMATTA
NORTHMEAD BICYCLE LINKS
WHITEHAVEN ROAD STRATEGIC DESIGN
GENERAL ARRANGEMENT PLAN

DRAWING STATUS: **STRATEGIC DESIGN**

DESIGNED: ODY MURLIANTO	CHECKED: RICHARD WEST	APPROVED: GARETH MILLS
PROJECT No: PS207513	DRAWN: ODY MURLIANTO	DATE: 26.02.2024
DRAWING No: PS207513-SD-DR-122		REV: A



PLAN
SCALE 1:500

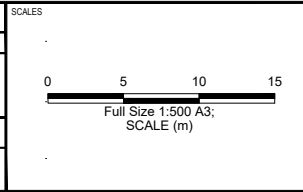
LEGEND

	EXISTING FEATURES
	PROPOSED FEATURES
	REMOVED FEATURES

File name: U:\PROJECTS\2024\02\03\03\13_KLEINS_ROAD_CORRIDOR\WPB\BIM\A3\SD-STRATEGIC DESIGN\PS207513-SD-DR-123.DWG, printed on Monday, 26 February 2024 7:20:05 PM, by Murlianto, City

DATE	BY	DESCRIPTION	CHK	APPD
26.02.2024		PRELIMINARY FOR TRAFFIC COMMITTEE	R.W.	G.M.

REFERENCE COORDINATION DRAWINGS			
DESCRIPTION	DRAWING NO.	REV	CHK
SURVEY DATUM			
HORIZONTAL DATUM		VERTICAL DATUM	



A3 ORIGINAL
DO NOT SCALE THIS DRAWING

SIGNED: _____

APPROVED: _____

DATE: _____ RREQ: _____

© WSP Australia Pty Ltd.

Level 27, 680 George Street, Sydney
GPO Box 5394, NSW 2001, Australia
Tel: +61 2 9272 5100 Fax: +61 2 9272 5101
wsp.com

CLIENT:

126 Church Street
PARRAMATTA NSW 2150
Tel: +61 2 9806 5050
www.cityofparramatta.nsw.gov.au

NOTE:
1. THIS STRATEGIC ROAD DESIGN AND ASSOCIATED DELINEATION HAVE BEEN PREPARED TO SUPPORT DISCUSSIONS WITH RELEVANT STAKEHOLDERS, PRELIMINARY INVESTIGATIONS AND REPORT.
2. EXISTING CONDITIONS ARE TRANSLATED FROM AN AERIAL IMAGERY ONLY WITH LIMITED ACCURACY.

PROJECT:
CITY OF PARRAMATTA
NORTHMEAD BICYCLE LINKS
WHITEHAVEN ROAD STRATEGIC DESIGN
GENERAL ARRANGEMENT PLAN

DRAWING STATUS: STRATEGIC DESIGN

DESIGNED: ODY MURLIANTO	CHECKED: RICHARD WEST	APPROVED: GARETH MILLS
PROJECT No: PS207513	DRAWN: ODY MURLIANTO	DATE: 26.02.2024
DRAWING No: PS207513-SD-DR-123		REV: A