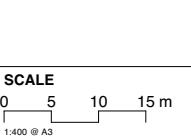


New or relocated item	Bidirectional bike path	Tree existing	Parking existing*	Threshold treatment
Existing removed item	New pavement	Tree removed	Parking removed	Options / Future upgrade
Existing Kerb	New pedestrian path	Tree new	Parking new	
Cadastre	Shared path	Garden bed	Bus stop	
Retaining wall**	Lighting existing	Utility pole existing		

REV	DESCRIPTION	DESIGN	REVIEW	DATE
C	DRAFT	FM/SL/HM	MD	31/01/23
D	DRAFT	FM/SL/HM	MD	03/04/23
E	FINAL	FM/SL/HM	MD	13/04/23
F	FINAL	FM/SL/HM	MD	13/11/23
G	FINAL	FM/SL/HM	MD	27/03/24



LEAD / LANDSCAPE ARCHITECTURE

**spackman mossop michael**

A: 15 Foster Street  
Surry Hills, NSW 2010  
T: (02) 9361 4549  
E: info@sm2group.com.au  
www.spackmanmossopmichaels.com

TRANSPORT PLANNING

**CROSSLEY**

Crossley Transport Planning  
T: 0498 841 887  
E: stephanie@crossleytp.com.au

NOTES

\*Existing parking on plans indicative, refer parking counts for further information.

\*\*Drawings are based on aerial and GIS information only. Site survey to confirm exact amount of kerb relocation and retaining walls.

CLIENT

**CITY OF PARRAMATTA**

PROJECT

**Toongabbie to Westmead Cycleway**

TITLE

High Level Concept Design

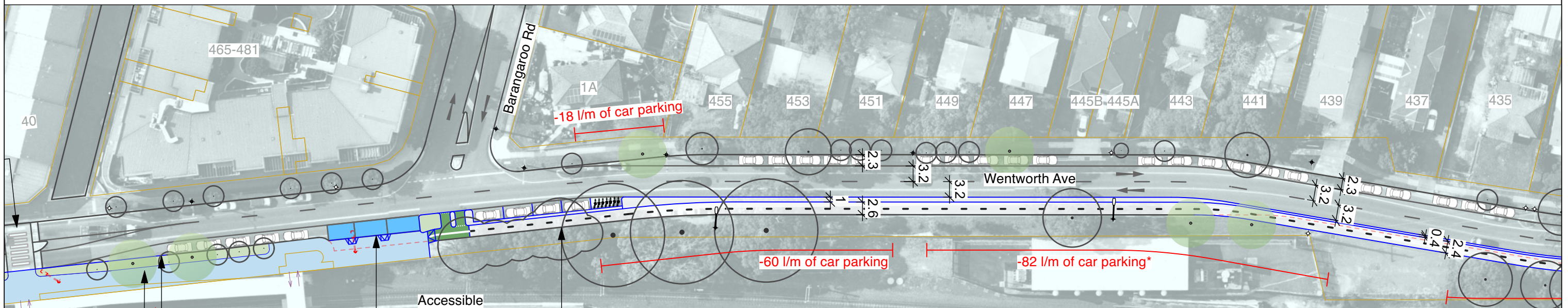
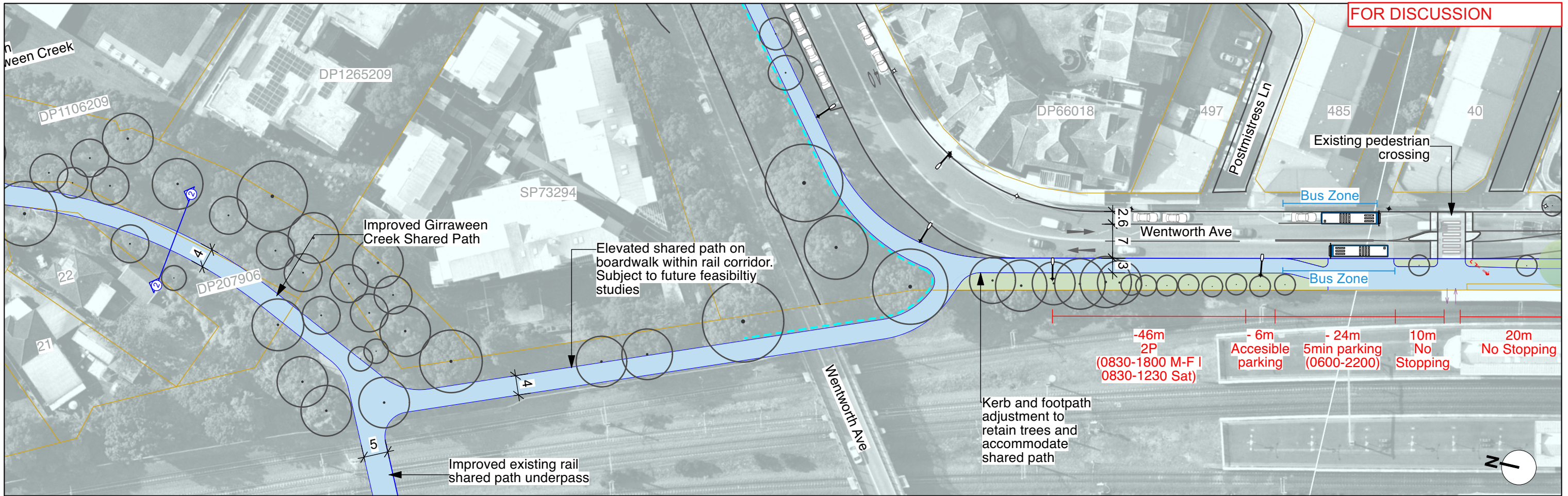
Drawing  
Concept Plan Final

SHEET

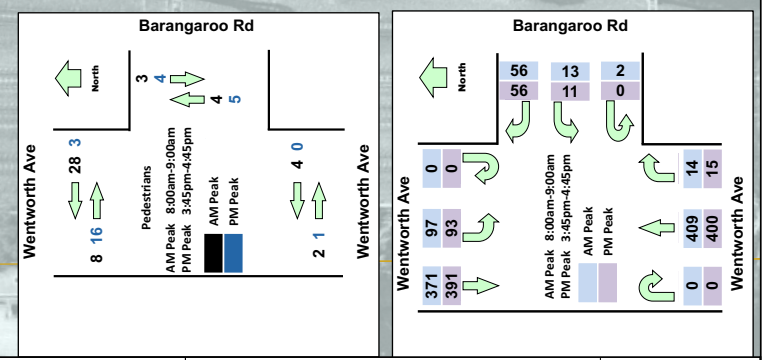
L.201

REV

G



New or relocated item	Bidirectional bike path	Tree existing	Parking existing*	Threshold treatment
Existing removed item	New pavement	Tree removed	Parking removed	Options / Future upgrade
Existing Kerb	New pedestrian path	Tree new	Parking new	
Cadastre	Shared path	Garden bed	Bus stop	
Retaining wall**	Lighting existing	Utility pole existing		



REV	DESCRIPTION	DESIGN	REVIEW	DATE
C	DRAFT	FM/SL/HM	MD	31/01/23
D	DRAFT	FM/SL/HM	MD	03/04/23
E	FINAL	FM/SL/HM	MD	13/04/23
F	FINAL	FM/SL/HM	MD	13/11/23
G	FINAL	FM/SL/HM	MD	27/03/24

**LEAD / LANDSCAPE ARCHITECTURE**  
**spackman mossop michael**  
 A: 15 Foster Street  
 Surry Hills, NSW 2010  
 T: (02) 9361 4549  
 E: info@sm2group.com.au  
 www.spackmanmossopmichaels.com

**TRANSPORT PLANNING**  
**CROSSLEY**  
 Crossley Transport Planning  
 T: 0498 641 687  
 E: stephanie@crossleytp.com.au

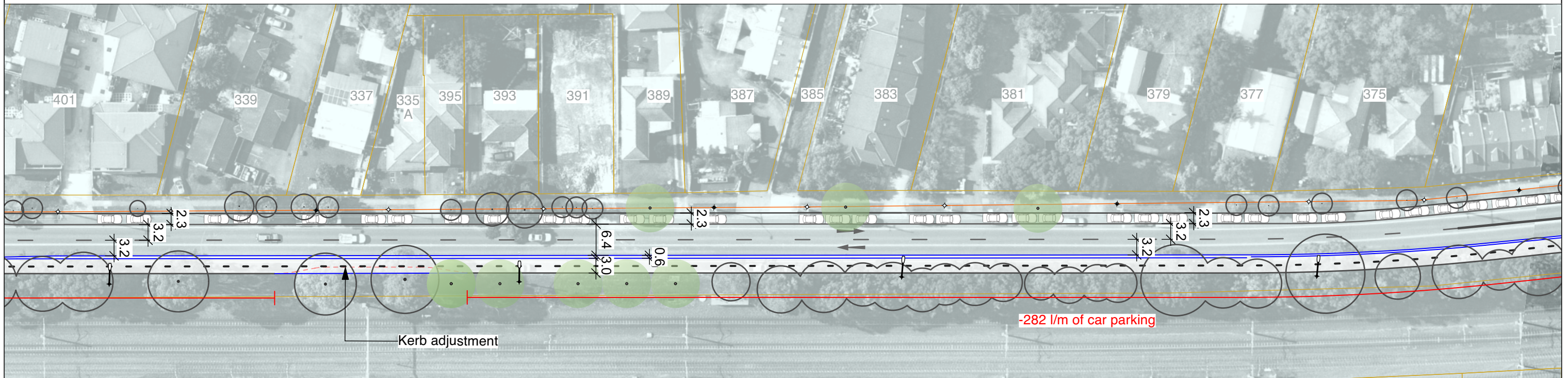
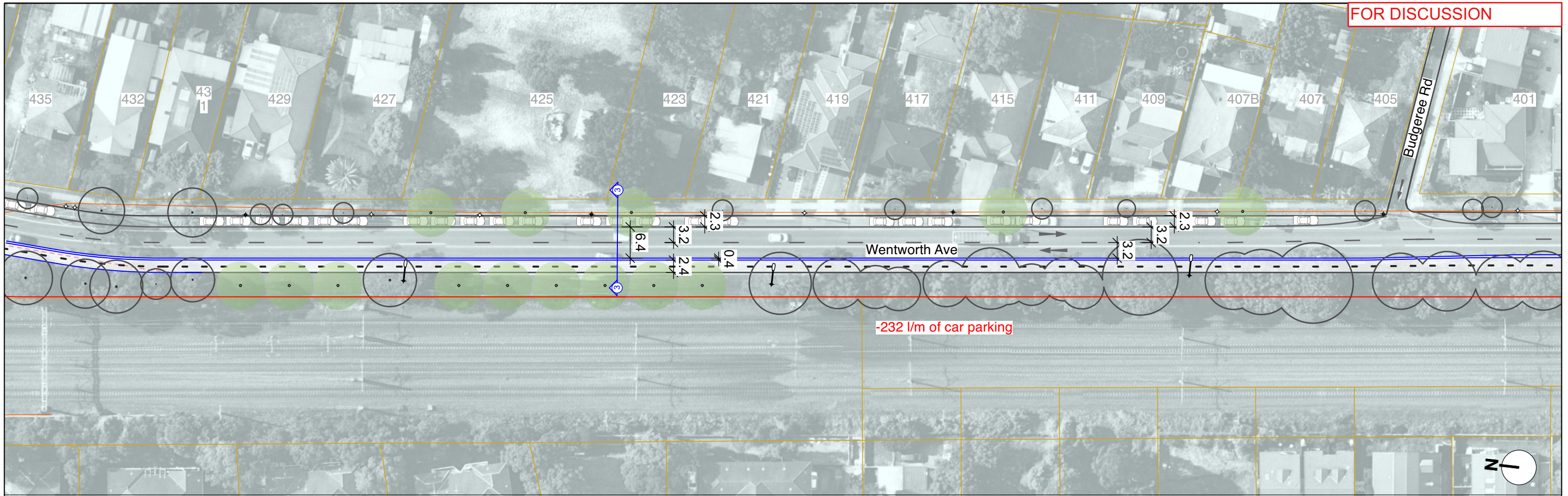
**NOTES**  
 \*Existing parking on plans indicative, refer parking counts for further information.  
 \*\*Drawings are based on aerial and GIS information only. Site survey to confirm exact amount of kerb relocation and retaining walls.

**CLIENT**  
**CITY OF PARRAMATTA**

**PROJECT**  
**Toongabbie to Westmead Cycleway**

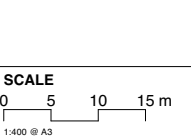
**TITLE**  
 High Level Concept Design  
 Drawing  
 Concept Plan Final

**SHEET**  
 L.202  
**REV**  
 G



New or relocated item	Bidirectional bike path	Tree existing	Parking existing*	Threshold treatment
Existing removed item	New pavement	Tree removed	Parking removed	Options / Future upgrade
Existing Kerb	New pedestrian path	Tree new	Parking new	
Cadastre	Shared path	Garden bed	Bus stop	
Retaining wall**	Lighting existing	Utility pole existing		

REV	DESCRIPTION	DESIGN	REVIEW	DATE
C	DRAFT	FM/SL/HM	MD	31/01/23
D	DRAFT	FM/SL/HM	MD	03/04/23
E	FINAL	FM/SL/HM	MD	13/04/23
F	FINAL	FM/SL/HM	MD	13/11/23
G	FINAL	FM/SL/HM	MD	27/03/24



**LEAD / LANDSCAPE ARCHITECTURE**  
**spackman mossop michael**  
 A: 15 Foster Street  
 Surry Hills, NSW 2010  
 T: (02) 9361 4549  
 E: info@sm2group.com.au  
 www.spackmanmossopmichaels.com

**TRANSPORT PLANNING**  
**CROSSLEY**  
 Crossley Transport Planning  
 T: 0498 641 987  
 E: stephanie@crossleytp.com.au

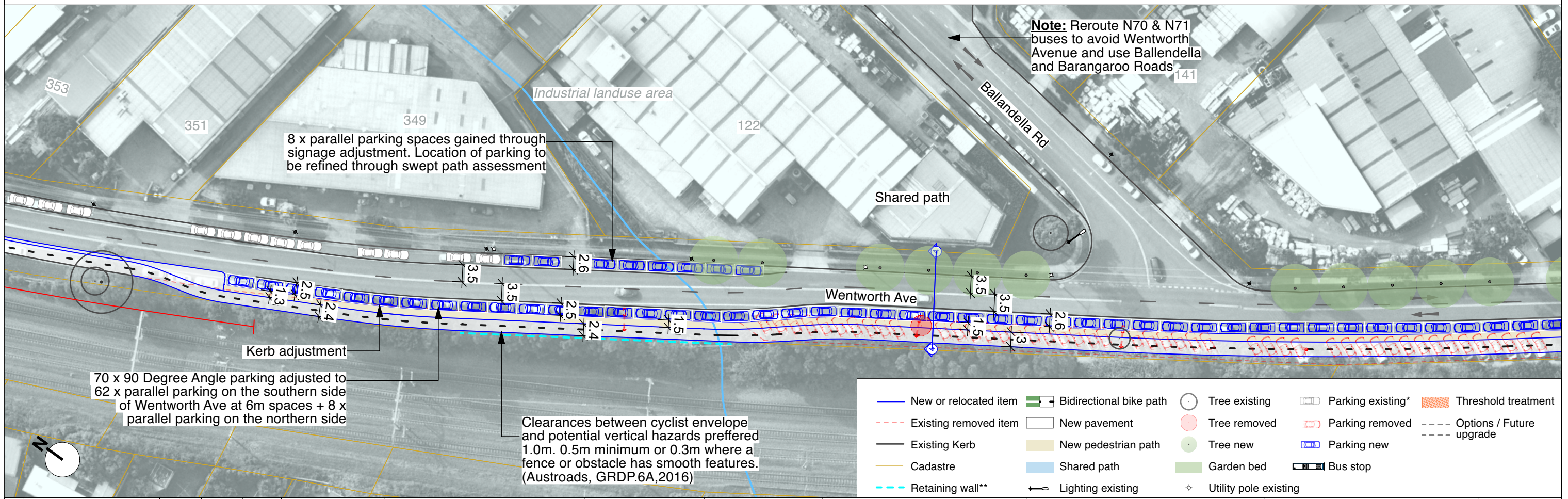
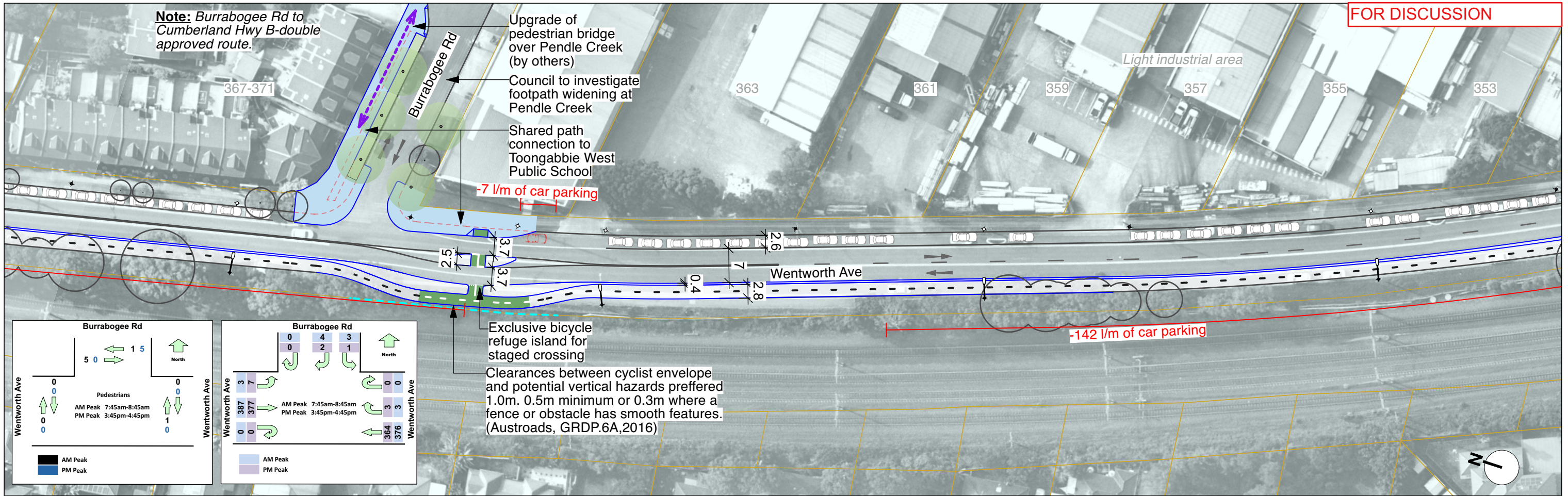
**NOTES**  
 \*Existing parking on plans indicative, refer parking counts for further information.  
 \*\*Drawings are based on aerial and GIS information only. Site survey to confirm exact amount of kerb relocation and retaining walls.

**CLIENT**  
  
**CITY OF PARRAMATTA**

**PROJECT**  
**Toongabbie to Westmead Cycleway**

**TITLE**  
 High Level Concept Design  
 Drawing  
 Concept Plan Final

**SHEET**  
 L.203  
**REV**  
 G



New or relocated item	Bidirectional bike path	Tree existing	Parking existing*	Threshold treatment
Existing removed item	New pavement	Tree removed	Parking removed	Options / Future upgrade
Existing Kerb	New pedestrian path	Tree new	Parking new	
Cadastre	Shared path	Garden bed	Bus stop	
Retaining wall**	Lighting existing	Utility pole existing		

REV	DESCRIPTION	DESIGN	REVIEW	DATE
C	DRAFT	FM/SL/HM	MD	31/01/23
D	DRAFT	FM/SL/HM	MD	03/04/23
E	FINAL	FM/SL/HM	MD	13/04/23
F	FINAL	FM/SL/HM	MD	13/11/23
G	FINAL	FM/SL/HM	MD	27/03/24

LEAD / LANDSCAPE ARCHITECTURE

**spackman mossop michael**

A: 15 Foster Street  
Surry Hills, NSW 2010  
T: (02) 9361 4549  
E: info@sm2group.com.au  
www.spackmanmossopmichaels.com

TRANSPORT PLANNING

**CROSSLEY**

Crossley Transport Planning  
T: 0498 641 687  
E: stephanie@crossleytp.com.au

NOTES

\*Existing parking on plans indicative, refer parking counts for further information.

\*\*Drawings are based on aerial and GIS information only. Site survey to confirm exact amount of kerb relocation and retaining walls.

CLIENT

**CITY OF PARRAMATTA**

PROJECT

**Toongabbie to Westmead Cycleway**

TITLE

High Level Concept Design

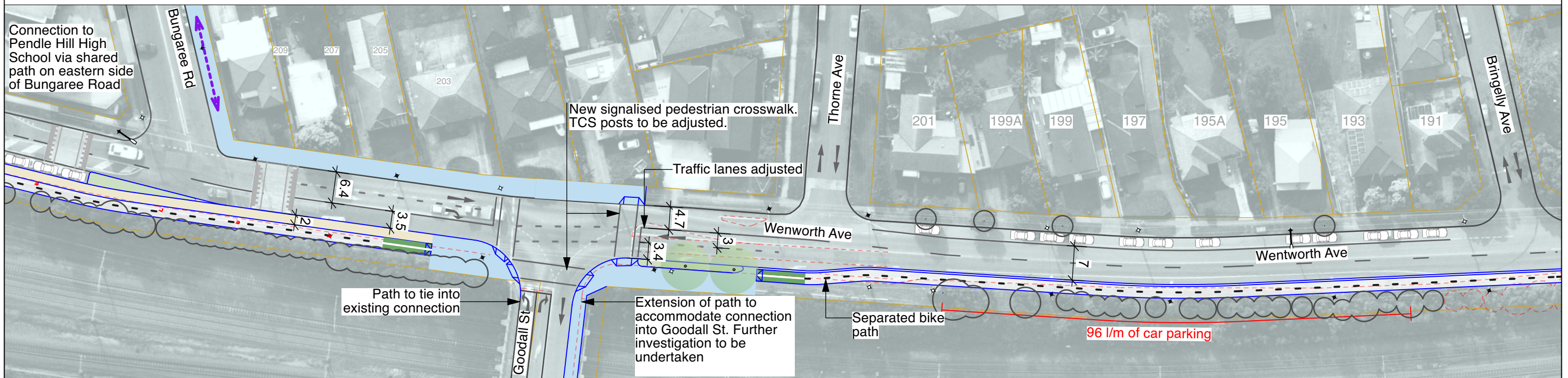
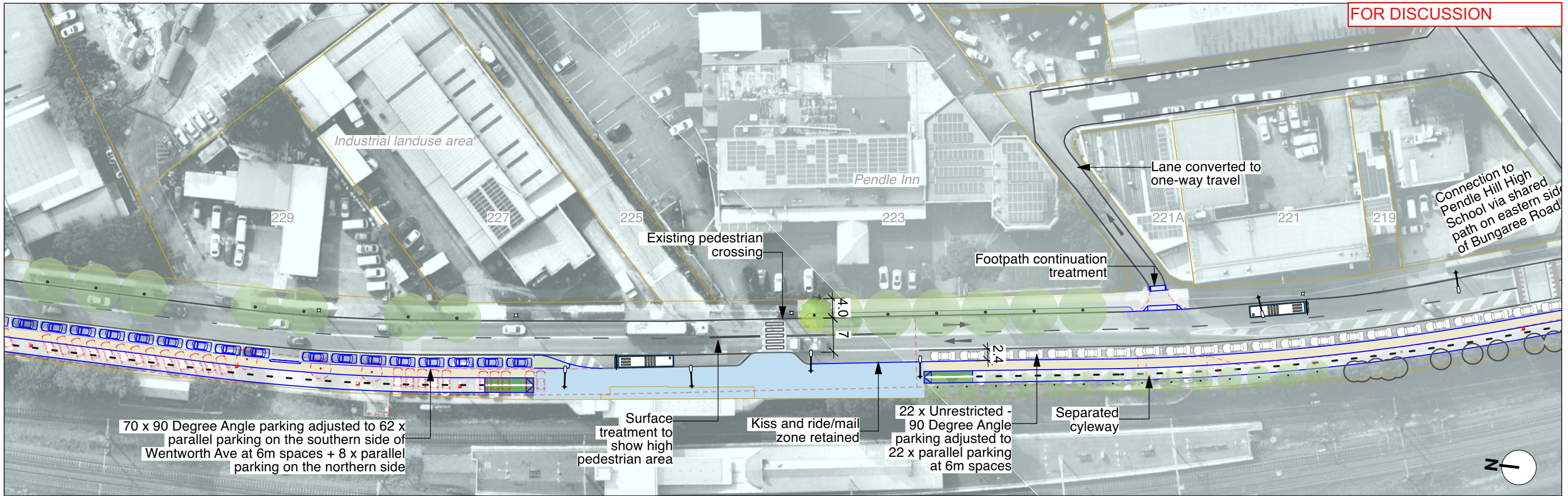
Drawing  
Concept Plan Final

SHEET

L.204

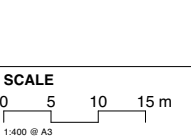
REV

G



New or relocated item	Bidirectional bike path	Tree existing	Parking existing*	Threshold treatment
Existing removed item	New pavement	Tree removed	Parking removed	Options / Future upgrade
Existing Kerb	New pedestrian path	Tree new	Parking new	
Cadastre	Shared path	Garden bed	Bus stop	
Retaining wall**	Lighting existing	Utility pole existing		

REV	DESCRIPTION	DESIGN	REVIEW	DATE
C	DRAFT	FM/SL/HM	MD	31/01/23
D	DRAFT	FM/SL/HM	MD	03/04/23
E	FINAL	FM/SL/HM	MD	13/04/23
F	FINAL	FM/SL/HM	MD	13/11/23
G	FINAL	FM/SL/HM	MD	27/03/24



LEAD / LANDSCAPE ARCHITECTURE  
**spackman mossop michael**  
 A: 15 Foster Street  
 Surry Hills, NSW 2010  
 T: (02) 9361 4549  
 E: info@sm2group.com.au  
 www.spackmanmossopmichaels.com

TRANSPORT PLANNING  
**CROSSLEY**  
 Crossley Transport Planning  
 T: 0498 841 987  
 E: stephanie@crossleytp.com.au

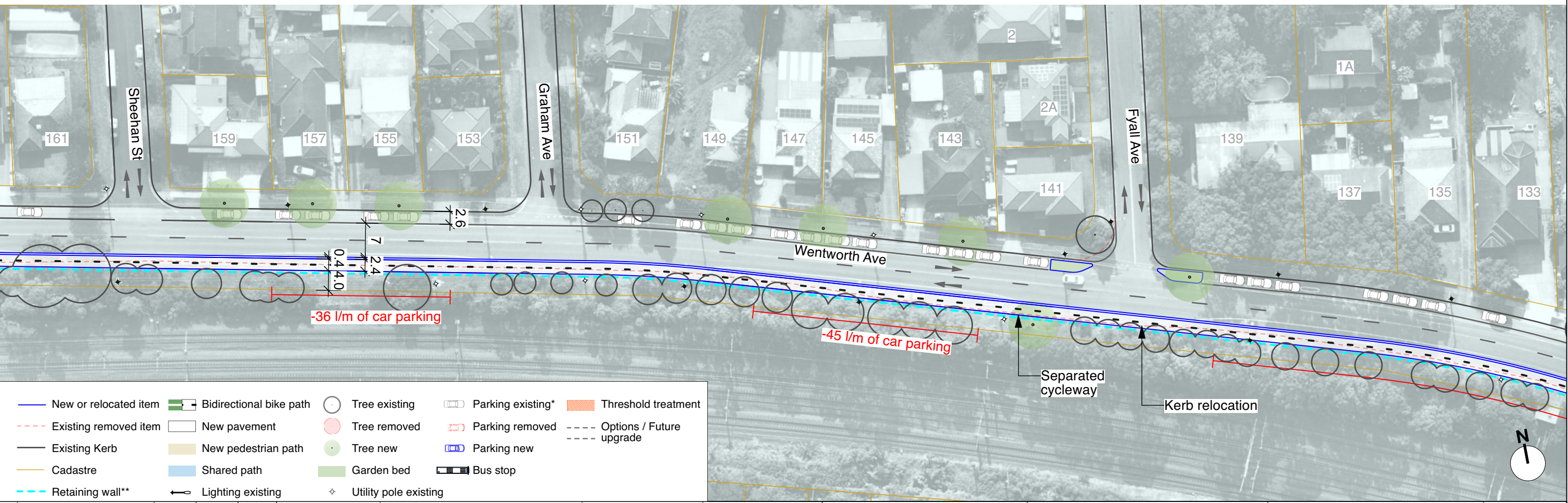
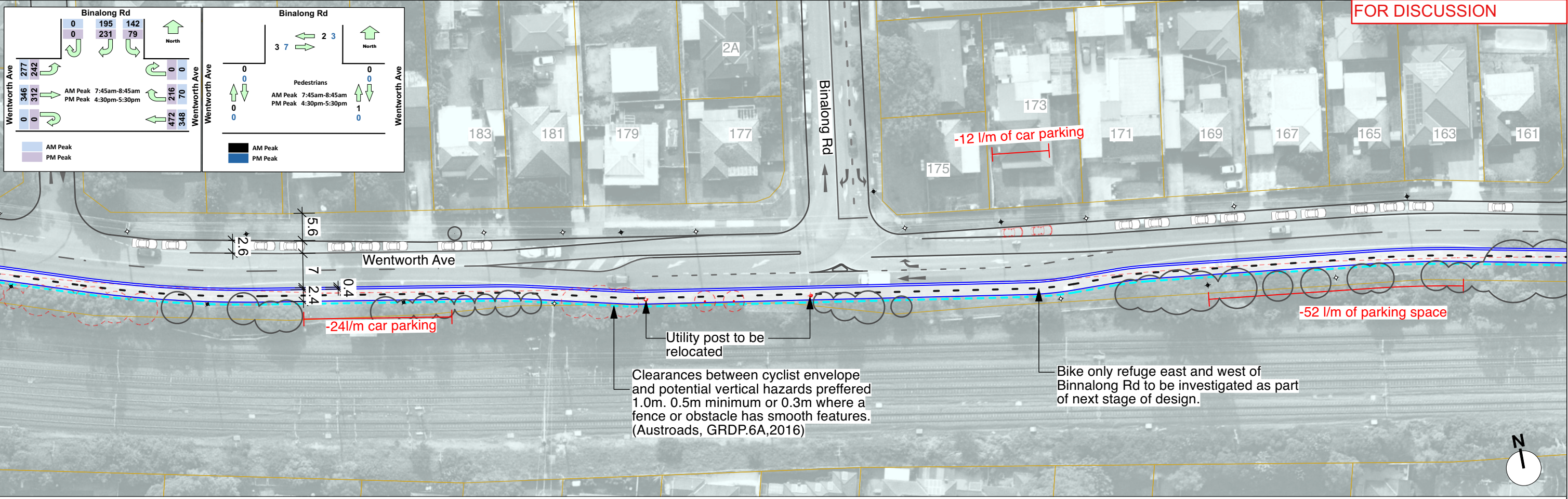
NOTES  
 \*Existing parking on plans indicative, refer parking counts for further information.  
 \*\*Drawings are based on aerial and GIS information only. Site survey to confirm exact amount of kerb relocation and retaining walls.

CLIENT  
**CITY OF PARRAMATTA**

PROJECT  
**Toongabbie to Westmead Cycleway**

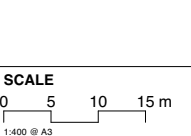
TITLE  
 High Level Concept Design  
 Drawing  
 Concept Plan Final

SHEET  
 L.205  
 REV  
 G



New or relocated item	Bidirectional bike path	Tree existing	Parking existing*	Threshold treatment
Existing removed item	New pavement	Tree removed	Parking removed	Options / Future upgrade
Existing Kerb	New pedestrian path	Tree new	Parking new	
Cadastre	Shared path	Garden bed	Bus stop	
Retaining wall**	Lighting existing	Utility pole existing		

REV	DESCRIPTION	DESIGN	REVIEW	DATE
C	DRAFT	FM/SL/HM	MD	31/01/23
D	DRAFT	FM/SL/HM	MD	03/04/23
E	FINAL	FM/SL/HM	MD	13/04/23
F	FINAL	FM/SL/HM	MD	13/11/23
G	FINAL	FM/SL/HM	MD	27/03/24



**LEAD / LANDSCAPE ARCHITECTURE**  
**spackman mossop michael**  
 A: 15 Foster Street  
 Surry Hills, NSW 2010  
 T: (02) 9361 4549  
 E: info@sm2group.com.au  
 www.spackmanmossopmichael.com

**TRANSPORT PLANNING**  
**CROSSLEY**  
 Crossley Transport Planning  
 T: 0498 541 587  
 E: stephanie@crossleytp.com.au

**NOTES**  
 \*Existing parking on plans indicative, refer parking counts for further information.  
 \*\*Drawings are based on aerial and GIS information only. Site survey to confirm exact amount of kerb relocation and retaining walls.

**CLIENT**  
**CITY OF PARRAMATTA**

**PROJECT**  
**Toongabbie to Westmead Cycleway**

**TITLE**  
 High Level Concept Design  
 Drawing  
 Concept Plan Final

**SHEET**  
 L.206  
 REV  
 G