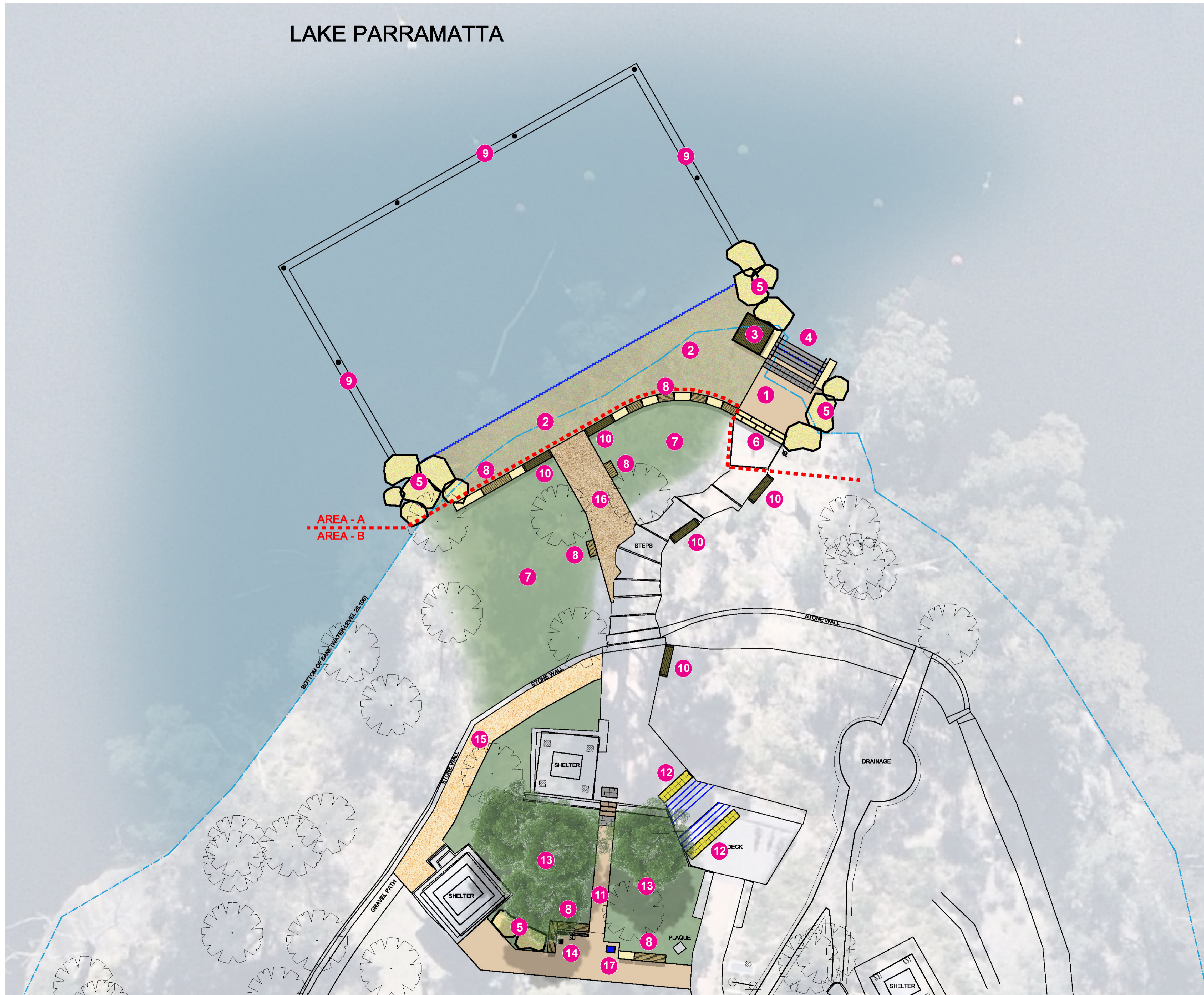


LAKE PARRAMATTA



LEGEND

- 1** - Coloured concrete pavement to improve accessibility to waters edge
- 2** - Coarse river sand 'beach' for improved level water access
- 3** - 2.0 x 2.0m raised mod-wood lifeguard platform
- 4** - Concrete water access steps with two stainless steel handrails and tactile surface indicators
- 5** - Proposed sandstone rock outcrops / boulders
- 6** - Sandstone steps to match existing
- 7** - Planted native bush regeneration works
- 8** - Sandstone block seating wall with composite seating slats
- 9** - Underwater retaining wall to 1.8m depth with depth markers to retain coarse river sand 'beach' material
- 10** - Backrest and armrests placed on sandstone block retaining wall
- 11** - Coloured concrete access pathway with sandstone steps and tactile surface indicators along pedestrian desire line improving accessibility to existing shelters and swimming area
- 12** - Yellow step tread nosing and tactile surface indicators placed at the top and bottom of existing deck steps for improved accessibility
- 13** - Planted native bush regeneration works including endemic 'Black Butt' shade tree planting
- 14** - Outdoor shower
- 15** - Improved access with widened decomposed granite pathway
- 16** - Informal crushed sandstone pathway and swimming area maintenance access
- 17** - Water refill station