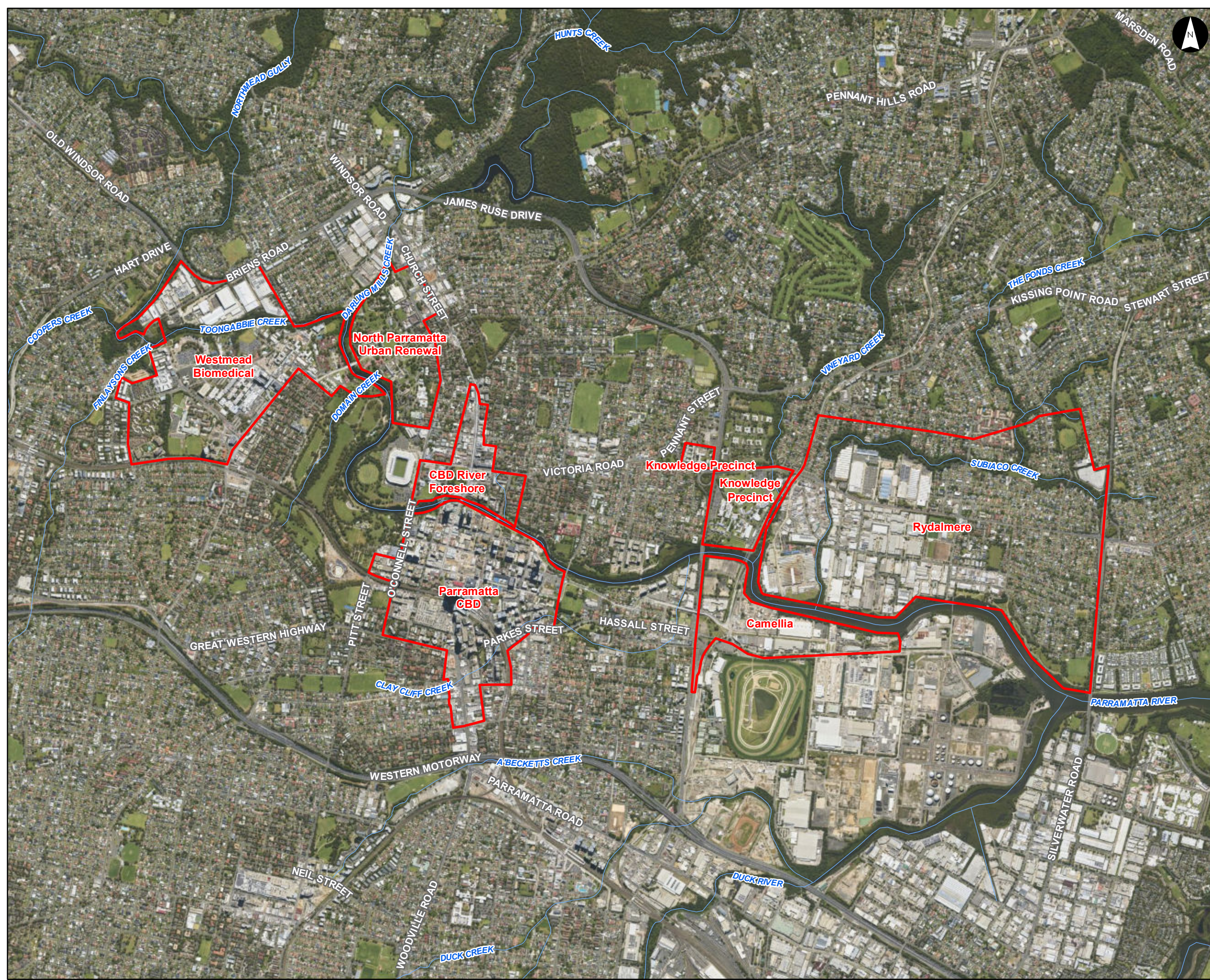


APPENDIX



EMERGENCY RESPONSE MAPS

DRAFT - FOR PUBLIC EXHIBITION



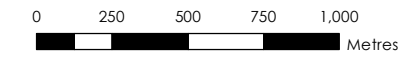
Areas of Significance

Parramatta River Flood Study
Project Code: 59916074
Drawn By: AS
Map: 59916074-GS-107-
EmergencyResponseAOIs.mxd
Rev: 01
Date: 2023-06-13

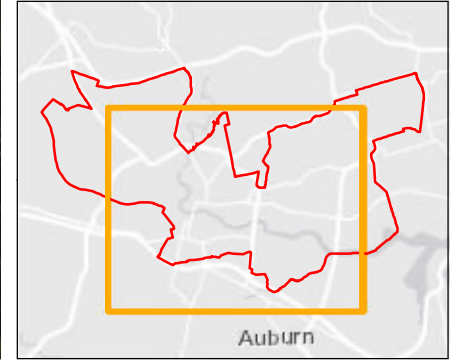
- Legend**
- Area of Significance
 - Watercourse
 - Cadastre

Figure 00

- Notes:
- Coordinate System: GDA 1994 MGA Zone 56
- References:
- Base data supplied by NSW SS and Esri
 - Aerial imagery supplied by MetroMap
 - Cadastre (2015) supplied by PCC



Scale at A3 1:25,000



This document has been prepared based on information provided by others as cited in the data sources. Stantec has not verified the accuracy and/or completeness of this information and shall not be responsible for any errors or omissions which may be incorporated herein as a result. Stantec assumes no responsibility for data supplied in electronic format, and the recipient accepts full responsibility for verifying the accuracy and completeness of the data.



**PMF Flood Emergency Response Classification
Camellia**

Parramatta River Flood Study

Project Code: 59916074
 Drawn By: AS
 Map: 59916074-GS-047-
 PMF_EmergencyResponse.mxd
 Rev: 04
 Date: 2023-06-13

- Legend**
- Area of Significance
 - Flood Depth Points
 - Watercourse
 - Evacuation Routes
 - Cadastre
- PMF Flood Planning Risk Identification**
- Indirectly Affected
 - Area with Overland Escape Route
 - High Flood Island
 - High Trapped Perimeter
 - Low Flood Island
 - Low Trapped Perimeter
 - Rising Road Access Area
 - Not Flood Affected

Figure O1.1

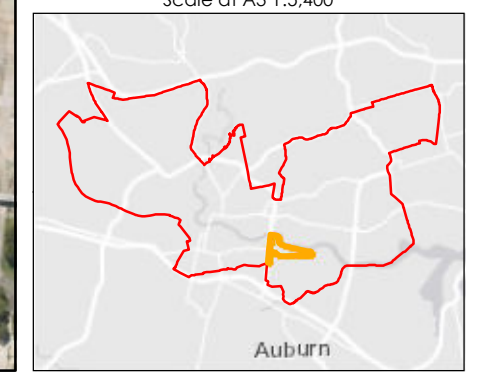
Notes:
 1. Coordinate System: GDA 1994 MGA Zone 56

References:
 1. Base data supplied by NSW SS and Esri
 2. Aerial imagery supplied by MetroMap
 3. Cadastre (2015) supplied by PCC

Stantec

0 30 60 90 120
 Metres

Scale at A3 1:5,400



This document has been prepared based on information provided by others as cited in the data sources. Stantec has not verified the accuracy and/or completeness of this information and shall not be responsible for any errors or omissions which may be incorporated herein as a result. Stantec assumes no responsibility for data supplied in electronic format, and the recipient accepts full responsibility for verifying the accuracy and completeness of the data.



**1% AEP Flood Emergency Response Classification
Camellia**

Parramatta River Flood Study

Project Code: 59916074
 Drawn By: AS
 Map: 59916074-GS-048-100y_EmergencyResponse.mxd
 Rev: 04
 Date: 2023-06-13

- Legend**
- Area of Significance
 - Flood Depth Points
 - Watercourse
 - Evacuation Routes
 - Cadastre
- 1% Flood Planning Risk Identification**
- High Flood Perimeter
 - Area with Overland Escape Route
 - High Flood Island
 - High Trapped Perimeter
 - Low Flood Island
 - Low Trapped Perimeter
 - Rising Road Access Area
 - Not Flood Affected

Figure O1.2

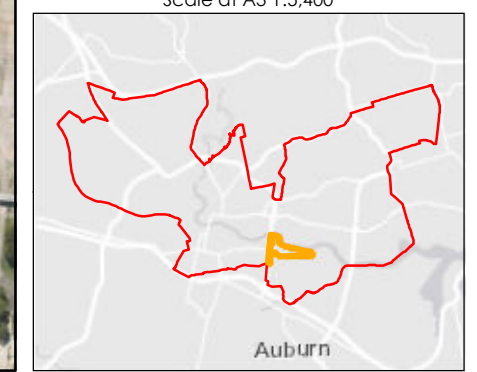
Notes:
 1. Coordinate System: GDA 1994 MGA Zone 56

References:
 1. Base data supplied by NSW SS and Esri
 2. Aerial imagery supplied by MetroMap
 3. Cadastre (2015) supplied by PCC

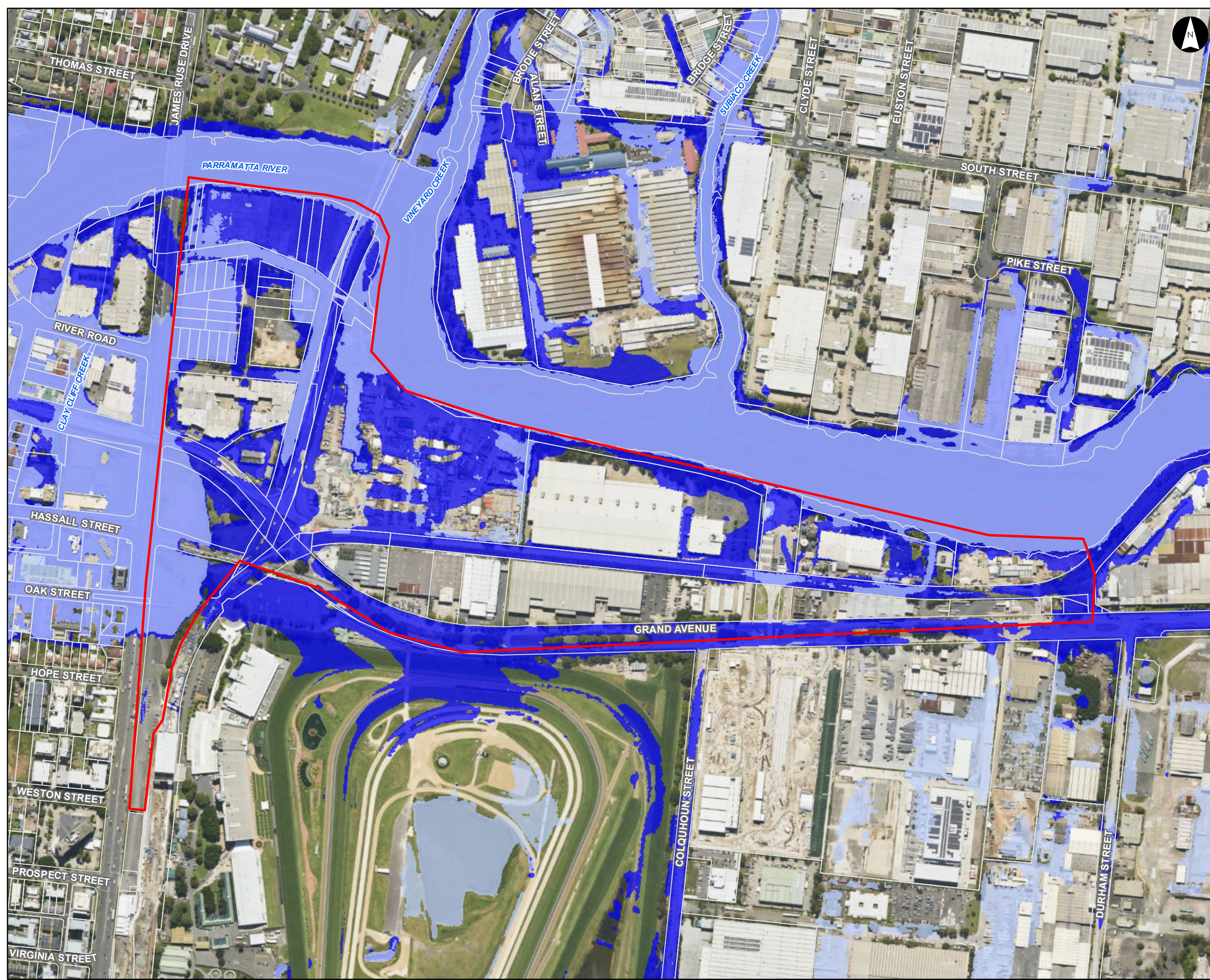
Stantec

0 50 100 150 200
 Meters

Scale at A3 1:5,400



This document has been prepared based on information provided by others as cited in the data sources. Stantec has not verified the accuracy and/or completeness of this information and shall not be responsible for any errors or omissions which may be incorporated herein as a result. Stantec assumes no responsibility for data supplied in electronic format, and the recipient accepts full responsibility for verifying the accuracy and completeness of the data.



Flood Planning
Constraints Categorisation
Camellia

Parramatta River Flood Study

Project Code: 59916074
Drawn By: AS
Map: 59916074-GS-046-FPCC_DDP.mxd
Rev: 02
Date: 2023-06-13

Legend

- Area of Significance
- Watercourse
- Cadastre

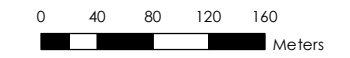
Flood Planning Constraint Categories

- FPCC1
- FPCC2

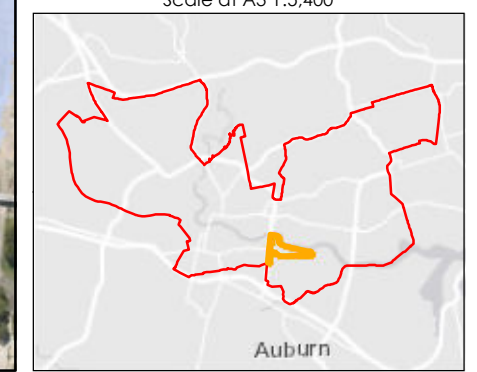
Figure O1.3

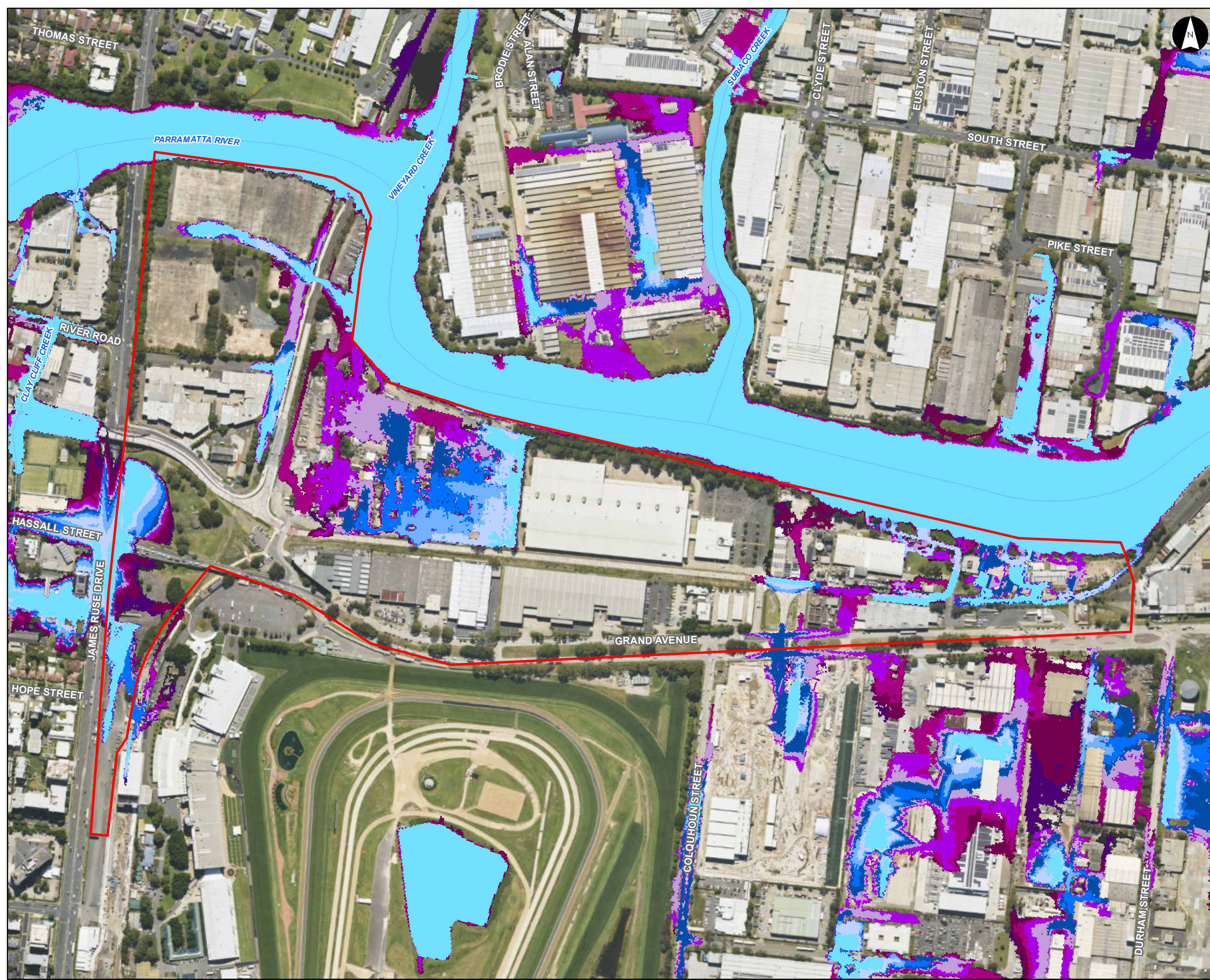
Notes:
1. Coordinate System: GDA 1994 MGA Zone 56

References:
1. Base data supplied by NSW SS and Esri
2. Aerial imagery supplied by MetroMap
3. Cadastre (2015) supplied by PCC



Scale at A3 1:5,400





1% AEP 12 hour Duration
Flood Progression
Camellia

Parramatta River Flood Study

Project Code: 59916074
Drawn By: AS
Map: 59916074-GS-039-
100yFloodProgression_Camellia.mxd
Rev: 03
Date: 2023-06-13

Legend

- Area of Significance
- Watercourse

Time (minutes)

- 30 min
- 60 min
- 90 min
- 120 min
- 150 min
- 180 min
- 210 min
- 240 min
- 300 min
- 360 min
- 420 min

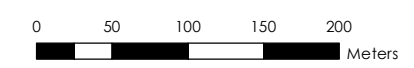
Figure O1.4

Notes:

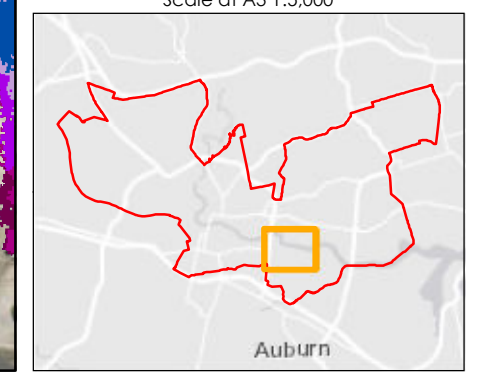
1. Coordinate System: GDA 1994 MGA Zone 56

References:

1. Base data supplied by NSW SS and Esri
2. Aerial imagery supplied by MetroMap



Scale at A3 1:5,000





**PMF Flood Emergency Response Classification
CBD River Foreshore**

Parramatta River Flood Study

Project Code: 59916074
 Drawn By: AS
 Map: 59916074-GS-047-
 PMF_EmergencyResponse.mxd
 Rev: 04
 Date: 2023-06-13

- Legend**
- Area of Significance
 - Flood Depth Points
 - Watercourse
 - Evacuation Routes
 - Cadastre
- PMF Flood Planning Risk Identification**
- Indirectly Affected
 - Area with Overland Escape Route
 - High Flood Island
 - High Trapped Perimeter
 - Low Flood Island
 - Low Trapped Perimeter
 - Rising Road Access Area
 - Not Flood Affected

Figure O2.1

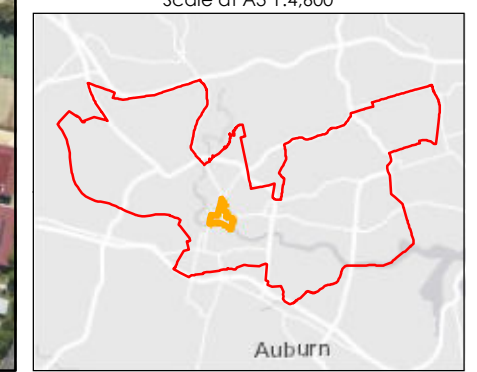
Notes:
 1. Coordinate System: GDA 1994 MGA Zone 56

References:
 1. Base data supplied by NSW SS and Esri
 2. Aerial imagery supplied by MetroMap
 3. Cadastre (2015) supplied by PCC

Stantec

0 30 60 90 120
 Metres

Scale at A3 1:4,600



This document has been prepared based on information provided by others as cited in the data sources. Stantec has not verified the accuracy and/or completeness of this information and shall not be responsible for any errors or omissions which may be incorporated herein as a result. Stantec assumes no responsibility for data supplied in electronic format, and the recipient accepts full responsibility for verifying the accuracy and completeness of the data.



**1% AEP Flood Emergency Response Classification
CBD River Foreshore**

Parramatta River Flood Study

Project Code: 59916074
 Drawn By: AS
 Map: 59916074-GS-048-100y_EmergencyResponse.mxd
 Rev: 04
 Date: 2023-06-13

- Legend**
- Area of Significance
 - Flood Depth Points
 - Watercourse
 - Evacuation Routes
 - Cadastre
- 1% Flood Planning Risk Identification**
- High Flood Perimeter
 - Area with Overland Escape Route
 - High Flood Island
 - High Trapped Perimeter
 - Low Flood Island
 - Low Trapped Perimeter
 - Rising Road Access Area
 - Not Flood Affected

Figure O2.2

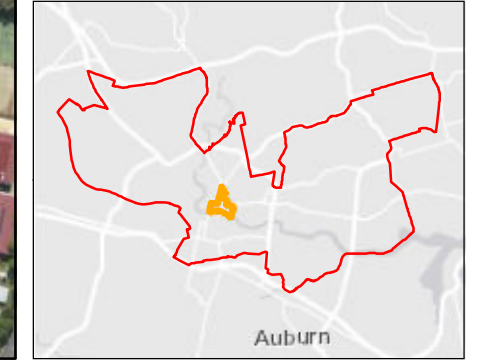
Notes:
 1. Coordinate System: GDA 1994 MGA Zone 56

References:
 1. Base data supplied by NSW SS and Esri
 2. Aerial imagery supplied by MetroMap
 3. Cadastre (2015) supplied by PCC

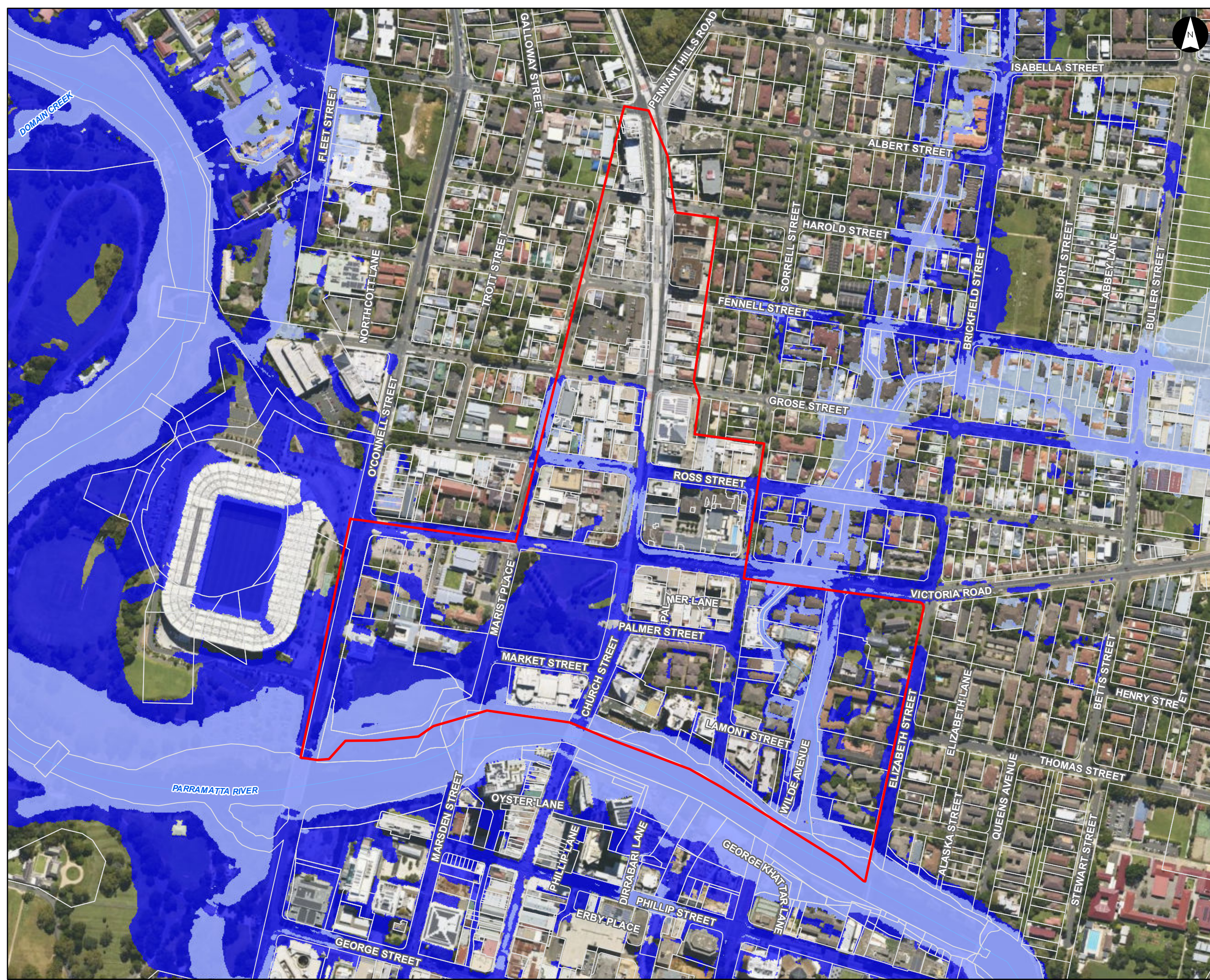
Stantec

0 40 80 120 160
 Meters

Scale at A3 1:4,600



This document has been prepared based on information provided by others as cited in the data sources. Stantec has not verified the accuracy and/or completeness of this information and shall not be responsible for any errors or omissions which may be incorporated herein as a result. Stantec assumes no responsibility for data supplied in electronic format, and the recipient accepts full responsibility for verifying the accuracy and completeness of the data.



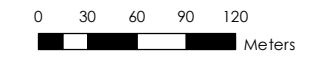
Flood Planning Constraints Categorisation CBD River Foreshore

Parramatta River Flood Study
Project Code: 59916074
Drawn By: AS
Map: 59916074-GS-046-FPCC_DDP.mxd
Rev: 02
Date: 2023-06-13

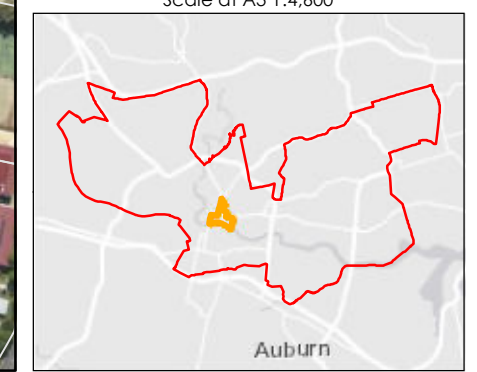
- Legend**
- Area of Significance
 - Watercourse
 - Cadastre
- Flood Planning Constraint Categories**
- FPCC1
 - FPCC2

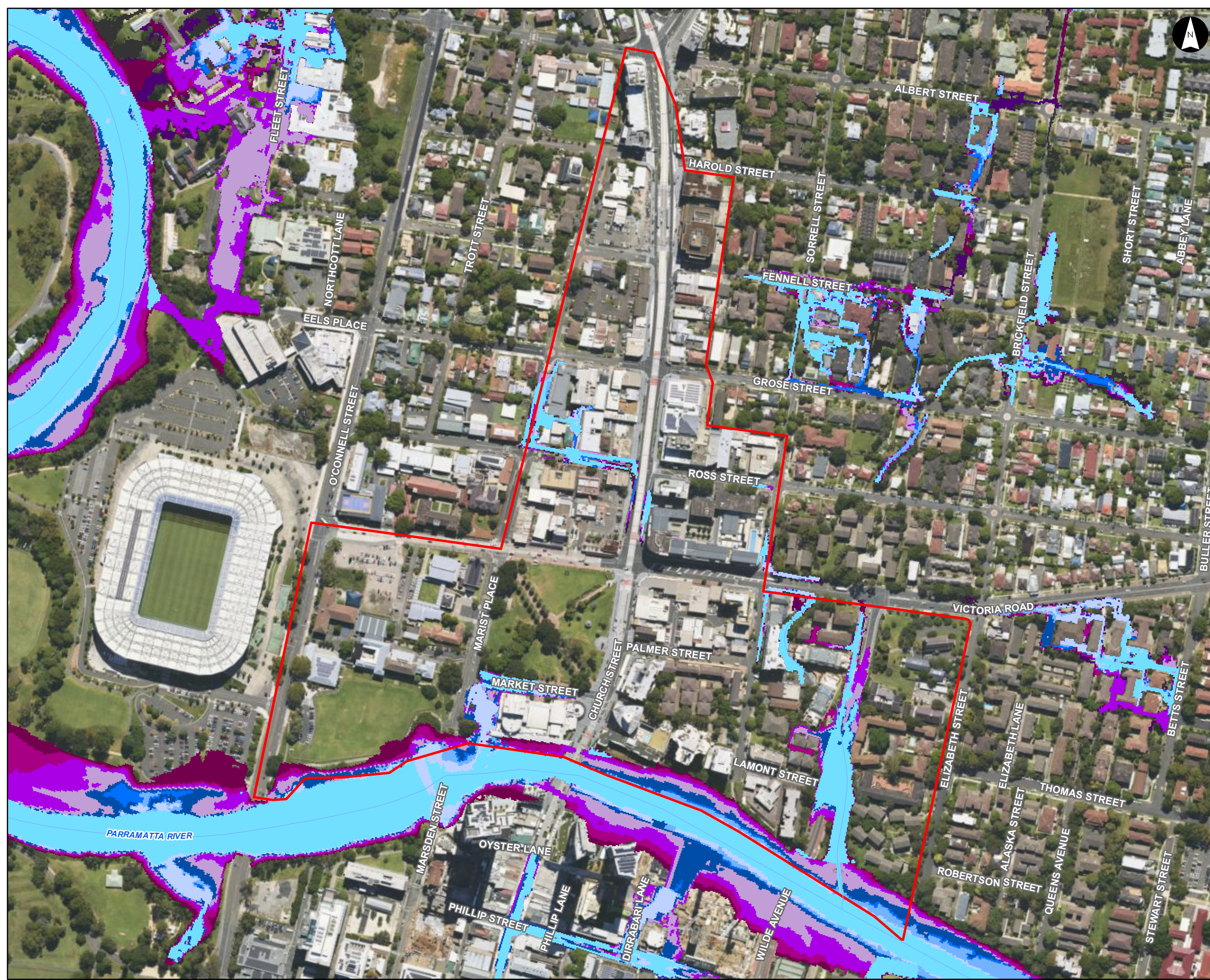
Figure O2.3

- Notes:
- Coordinate System: GDA 1994 MGA Zone 56
- References:
- Base data supplied by NSW SS and Esri
 - Aerial imagery supplied by MetroMap
 - Cadastre (2015) supplied by PCC



Scale at A3 1:4,600





1% AEP 12 hour Duration
Flood Progression
CBD River Foreshore

Parramatta River Flood Study

Project Code: 59916074
Drawn By: AS
Map: 59916074-GS-045-
100yFloodProgression_CBD_FSh.mxd
Rev: 03
Date: 2023-06-13

Legend

Area of Significance

Watercourse

Time (minutes)

- 30 min
- 60 min
- 90 min
- 120 min
- 150 min
- 180 min
- 210 min
- 240 min
- 300 min
- 360 min
- 420 min

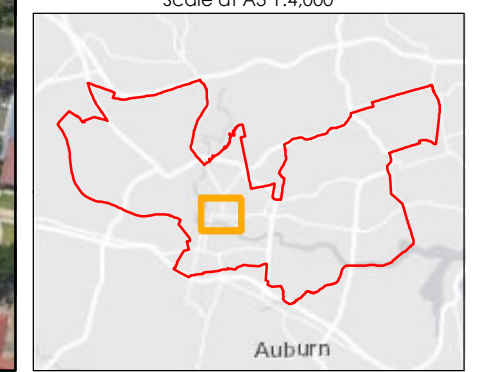
Figure O2.4

Notes:
1. Coordinate System: GDA 1994 MGA Zone 56

References:
1. Base data supplied by NSW SS and Esri
2. Aerial imagery supplied by MetroMap



Scale at A3 1:4,000





PMF Flood Emergency Response Classification Knowledge Precinct
 Parramatta River Flood Study
 Project Code: 59916074
 Drawn By: AS
 Map: 59916074-GS-047-PMF_EmergencyResponse.mxd
 Rev: 04
 Date: 2023-06-13

- Legend**
- Area of Significance
 - Flood Depth Points
 - Watercourse
 - Evacuation Routes
 - Cadastre
- PMF Flood Planning Risk Identification**
- Indirectly Affected
 - Area with Overland Escape Route
 - High Flood Island
 - High Trapped Perimeter
 - Low Flood Island
 - Low Trapped Perimeter
 - Rising Road Access Area
 - Not Flood Affected

Figure O3.1

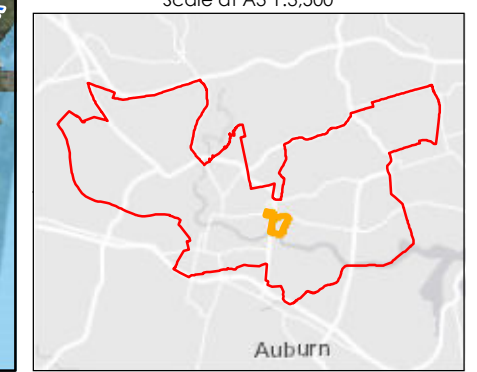
Notes:
 1. Coordinate System: GDA 1994 MGA Zone 56

References:
 1. Base data supplied by NSW SS and Esri
 2. Aerial imagery supplied by MetroMap
 3. Cadastre (2015) supplied by PCC

Stantec

0 20 40 60 80 Metres

Scale at A3 1:3,500



This document has been prepared based on information provided by others as cited in the data sources. Stantec has not verified the accuracy and/or completeness of this information and shall not be responsible for any errors or omissions which may be incorporated herein as a result. Stantec assumes no responsibility for data supplied in electronic format, and the recipient accepts full responsibility for verifying the accuracy and completeness of the data.



This document has been prepared based on information provided by others as cited in the data sources. Stantec has not verified the accuracy and/or completeness of this information and shall not be responsible for any errors or omissions which may be incorporated herein as a result. Stantec assumes no responsibility for data supplied in electronic format, and the recipient accepts full responsibility for verifying the accuracy and completeness of the data.



Flood Planning
Constraints Categorisation
Knowledge Precinct

Parramatta River Flood Study

Project Code: 59916074
Drawn By: AS
Map: 59916074-GS-046-FPCC_DDP.mxd
Rev: 02
Date: 2023-06-13

Legend

- Area of Significance
- Watercourse
- Cadastre

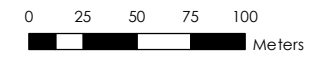
Flood Planning Constraint Categories

- FPC1
- FPC2

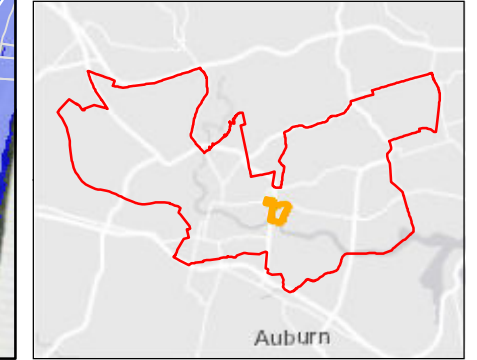
Figure O3.3

Notes:
1. Coordinate System: GDA 1994 MGA Zone 56

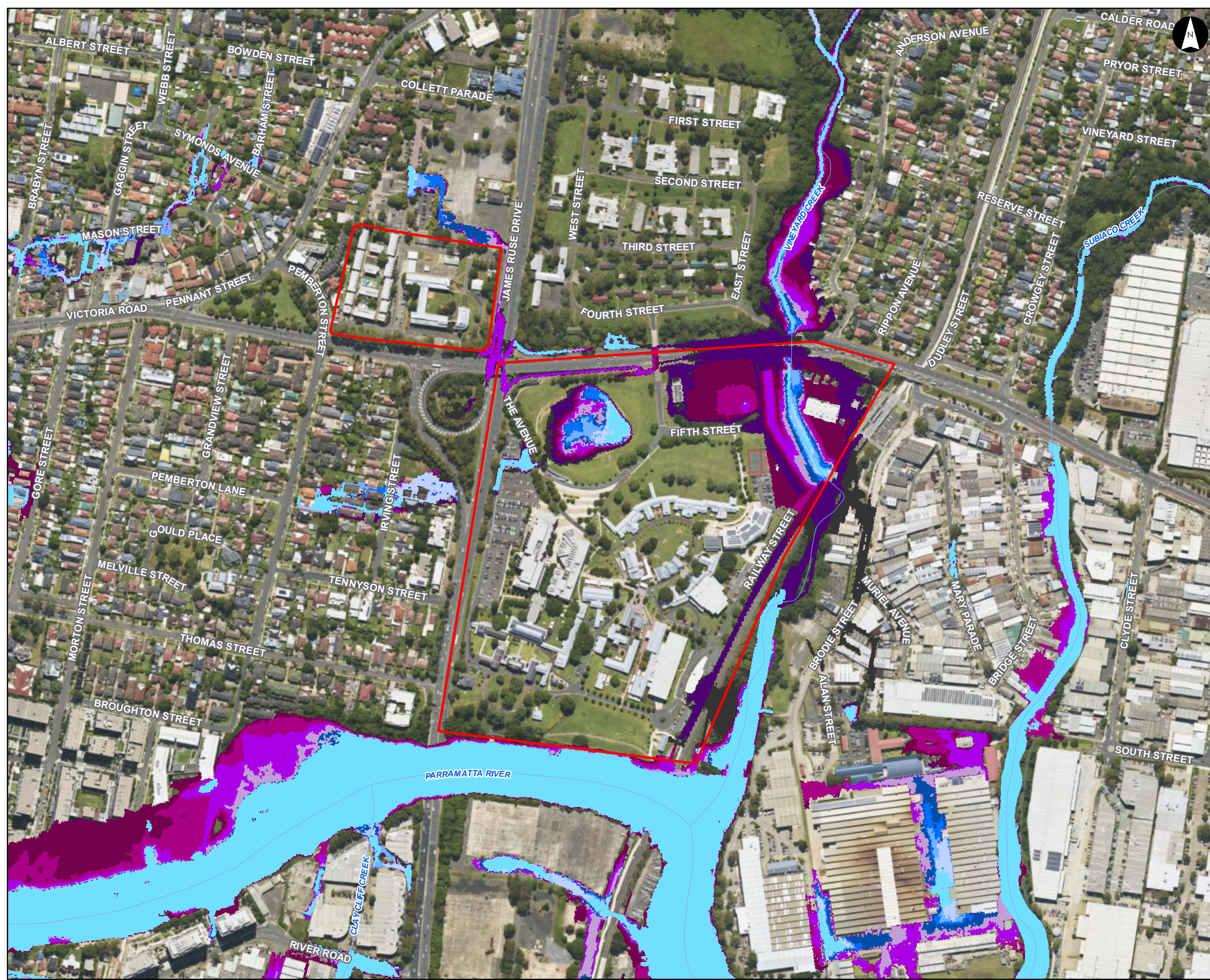
- References:
1. Base data supplied by NSW SS and Esri
 2. Aerial imagery supplied by MetroMap
 3. Cadastre (2015) supplied by PCC



Scale at A3 1:3,500



This document has been prepared based on information provided by others as cited in the data sources. Stantec has not verified the accuracy and/or completeness of this information and shall not be responsible for any errors or omissions which may be incorporated herein as a result. Stantec assumes no responsibility for data supplied in electronic format, and the recipient accepts full responsibility for verifying the accuracy and completeness of the data.



1% AEP 3 hour Duration
Flood Progression
Knowledge Precinct

Parramatta River Flood Study

Project Code: 59916074
Drawn By: AS
Map: 59916074-GS-041-
100yFloodProgression_KP.mxd
Rev: 03
Date: 2023-06-13

Legend

- Area of Significance
- Watercourse

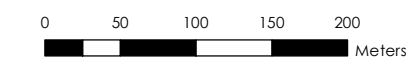
Time (minutes)

- 30 min
- 60 min
- 90 min
- 120 min
- 150 min
- 180 min
- 210 min
- 240 min
- 300 min
- 360 min
- 420 min

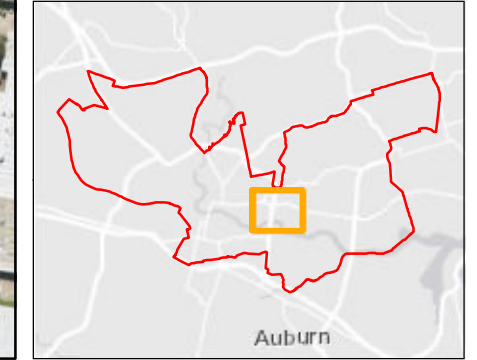
Figure O3.4

Notes:
1. Coordinate System: GDA 1994 MGA Zone 56

References:
1. Base data supplied by NSW SS and Esri
2. Aerial imagery supplied by MetroMap



Scale at A3 1:5,000





PMF Flood Emergency Response Classification
North Parramatta Urban Renewal
Parramatta River Flood Study

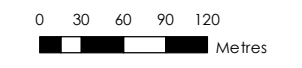
Project Code: 59916074
Drawn By: AS
Map: 59916074-GS-047-PMF_EmergencyResponse.mxd
Rev: 04
Date: 2023-06-13

- Legend**
- Area of Significance
 - Flood Depth Points
 - Watercourse
 - Evacuation Routes
 - Cadastre
- PMF Flood Planning Risk Identification**
- Indirectly Affected
 - Area with Overland Escape Route
 - High Flood Island
 - High Trapped Perimeter
 - Low Flood Island
 - Low Trapped Perimeter
 - Rising Road Access Area
 - Not Flood Affected

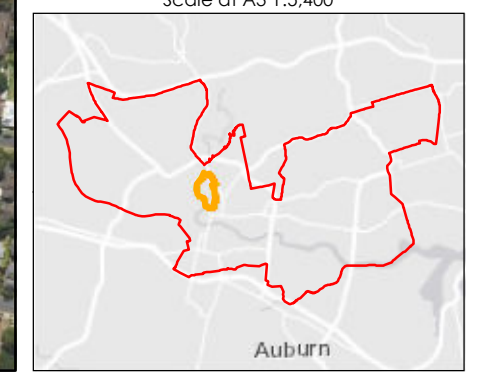
Figure O4.1

Notes:
1. Coordinate System: GDA 1994 MGA Zone 56

References:
1. Base data supplied by NSW SS and Esri
2. Aerial imagery supplied by MetroMap
3. Cadastre (2015) supplied by PCC



Scale at A3 1:5,400





1% AEP Flood Emergency Response Classification
North Parramatta Urban Renewal
Parramatta River Flood Study

Project Code: 59916074
Drawn By: AS
Map: 59916074-GS-048-100y_EmergencyResponse.mxd
Rev: 04
Date: 2023-06-13

- Legend**
- Area of Significance
 - Flood Depth Points
 - Watercourse
 - Evacuation Routes
 - Cadastre
- 1% Flood Planning Risk Identification**
- High Flood Perimeter
 - Area with Overland Escape Route
 - High Flood Island
 - High Trapped Perimeter
 - Low Flood Island
 - Low Trapped Perimeter
 - Rising Road Access Area
 - Not Flood Affected

Figure O4.2

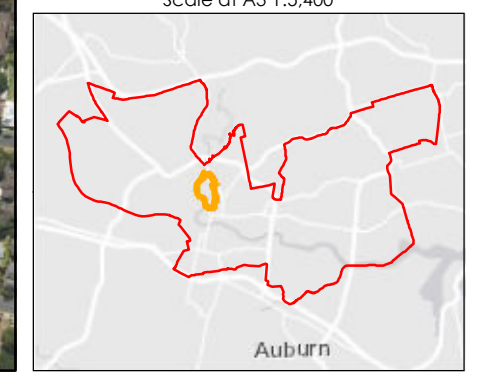
Notes:
1. Coordinate System: GDA 1994 MGA Zone 56

References:
1. Base data supplied by NSW SS and Esri
2. Aerial imagery supplied by MetroMap
3. Cadastre (2015) supplied by PCC

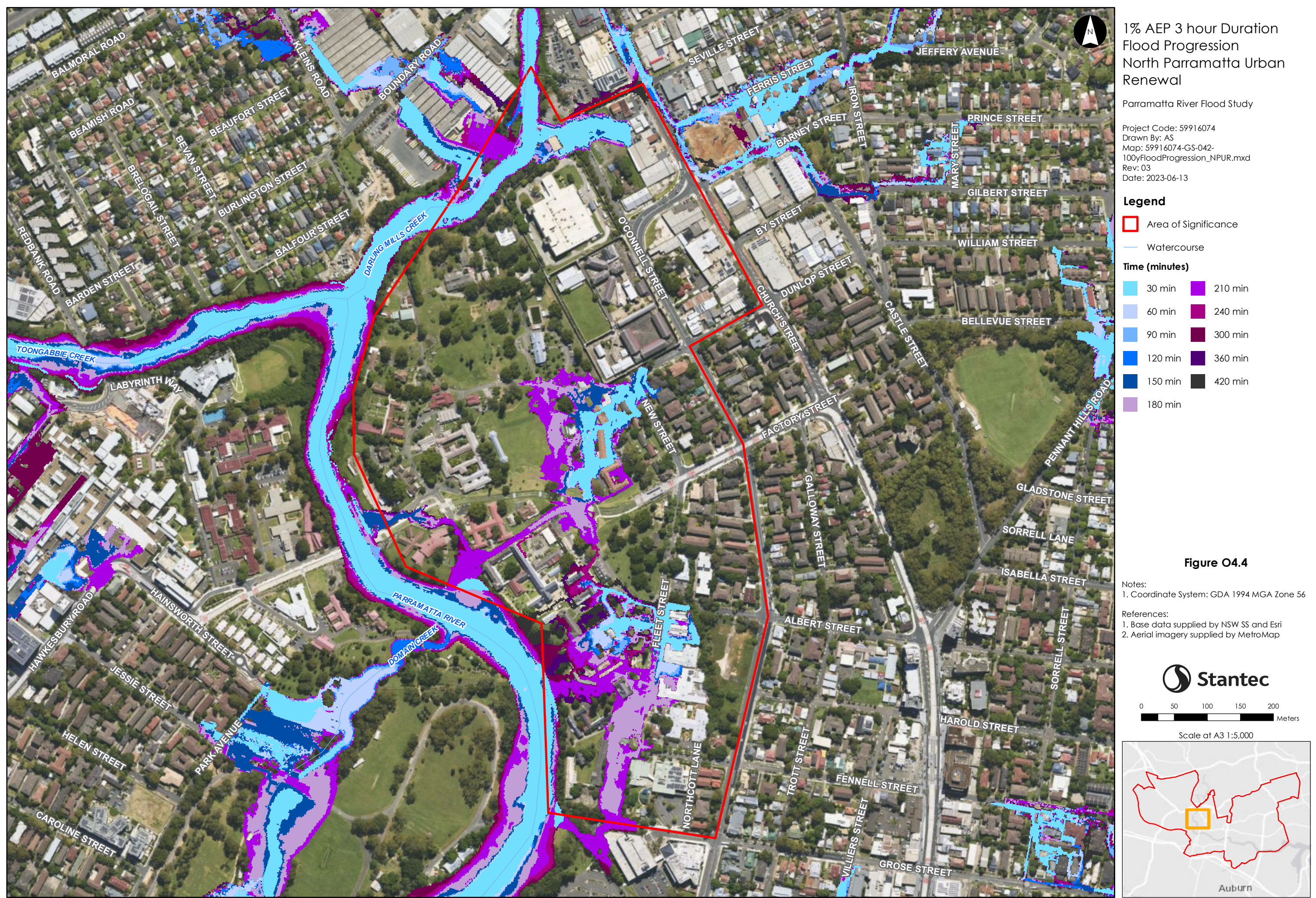
Stantec

0 50 100 150 200
Meters

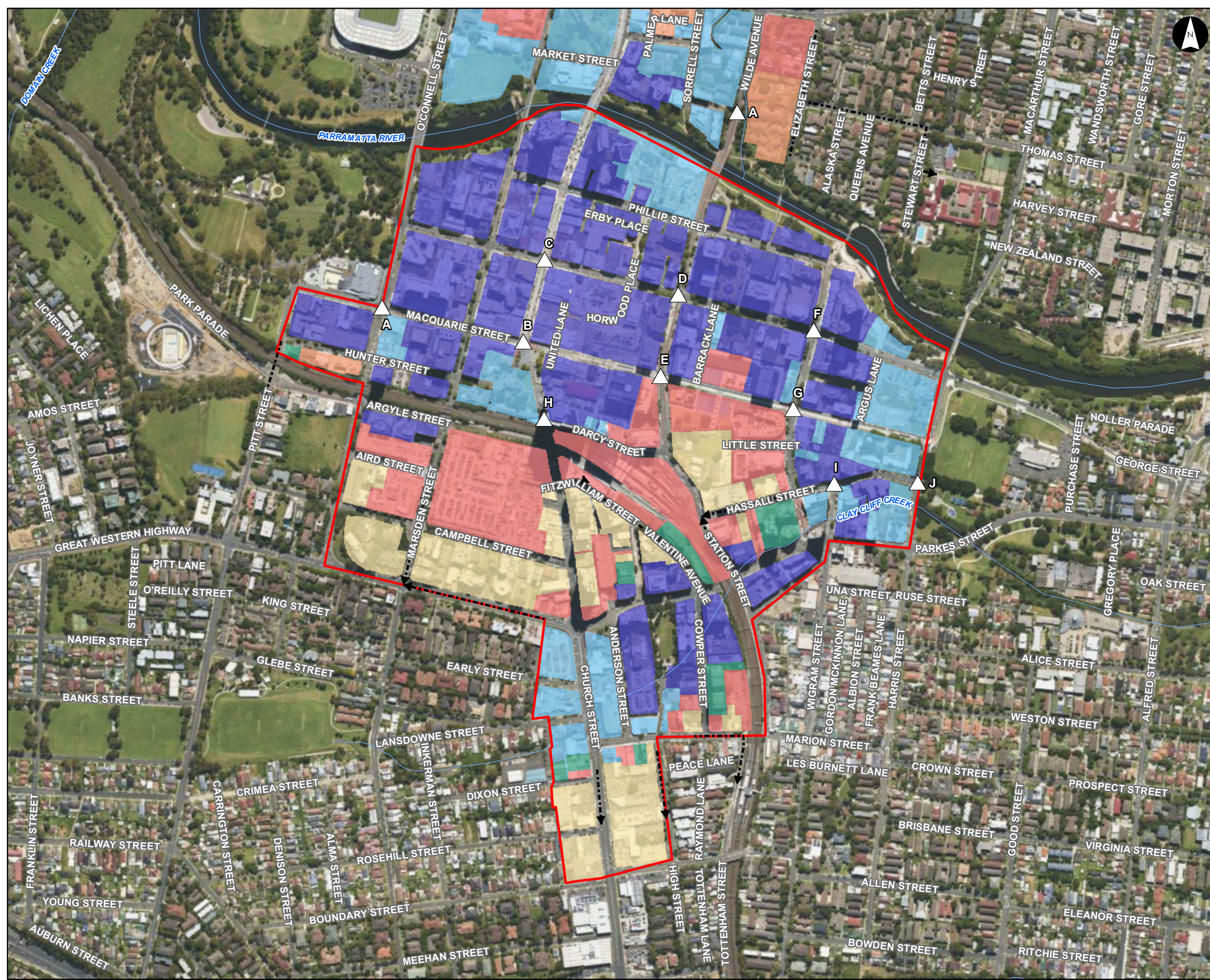
Scale at A3 1:5,400



This document has been prepared based on information provided by others as cited in the data sources. Stantec has not verified the accuracy and/or completeness of this information and shall not be responsible for any errors or omissions which may be incorporated herein as a result. Stantec assumes no responsibility for data supplied in electronic format, and the recipient accepts full responsibility for verifying the accuracy and completeness of the data.



This document has been prepared based on information provided by others as cited in the data sources. Stantec has not verified the accuracy and/or completeness of this information and shall not be responsible for any errors or omissions which may be incorporated herein as a result. Stantec assumes no responsibility for data supplied in electronic format, and the recipient accepts full responsibility for verifying the accuracy and completeness of the data.



PMF Flood Emergency Response Classification Parramatta CBD

Parramatta River Flood Study

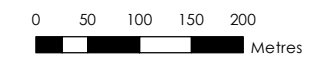
Project Code: 59916074
 Drawn By: AS
 Map: 59916074-GS-047-
 PMF_EmergencyResponse.mxd
 Rev: 04
 Date: 2023-06-13

- Legend**
- Area of Significance
 - Flood Depth Points
 - Watercourse
 - Evacuation Routes
 - Cadastre
- PMF Flood Planning Risk Identification**
- Indirectly Affected
 - Area with Overland Escape Route
 - High Flood Island
 - High Trapped Perimeter
 - Low Flood Island
 - Low Trapped Perimeter
 - Rising Road Access Area
 - Not Flood Affected

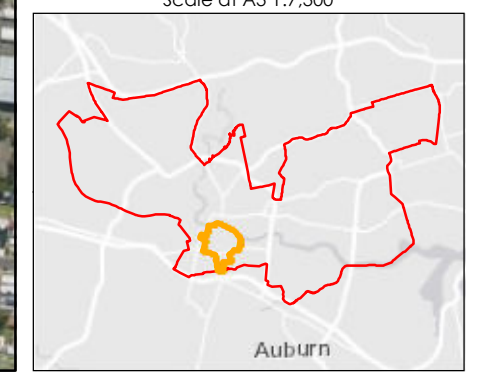
Figure O5.1

Notes:
 1. Coordinate System: GDA 1994 MGA Zone 56

References:
 1. Base data supplied by NSW SS and Esri
 2. Aerial imagery supplied by MetroMap
 3. Cadastre (2015) supplied by PCC



Scale at A3 1:7,300



This document has been prepared based on information provided by others as cited in the data sources. Stantec has not verified the accuracy and/or completeness of this information and shall not be responsible for any errors or omissions which may be incorporated herein as a result. Stantec assumes no responsibility for data supplied in electronic format, and the recipient accepts full responsibility for verifying the accuracy and completeness of the data.



1% AEP Flood Emergency Response Classification Parramatta CBD

Parramatta River Flood Study

Project Code: 59916074
 Drawn By: AS
 Map: 59916074-GS-048-100y_EmergencyResponse.mxd
 Rev: 04
 Date: 2023-06-13

- Legend**
- Area of Significance
 - Flood Depth Points
 - Watercourse
 - Evacuation Routes
 - Cadastre
- 1% Flood Planning Risk Identification**
- High Flood Perimeter
 - Area with Overland Escape Route
 - High Flood Island
 - High Trapped Perimeter
 - Low Flood Island
 - Low Trapped Perimeter
 - Rising Road Access Area
 - Not Flood Affected

Figure O5.2

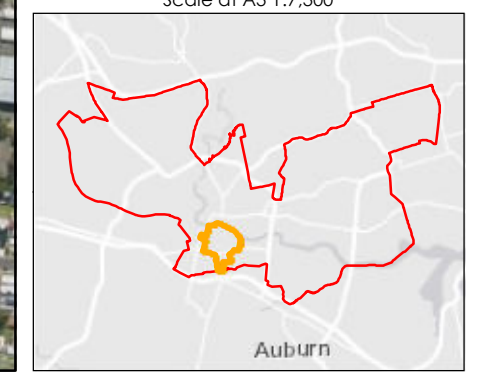
Notes:
 1. Coordinate System: GDA 1994 MGA Zone 56

References:
 1. Base data supplied by NSW SS and Esri
 2. Aerial imagery supplied by MetroMap
 3. Cadastre (2015) supplied by PCC

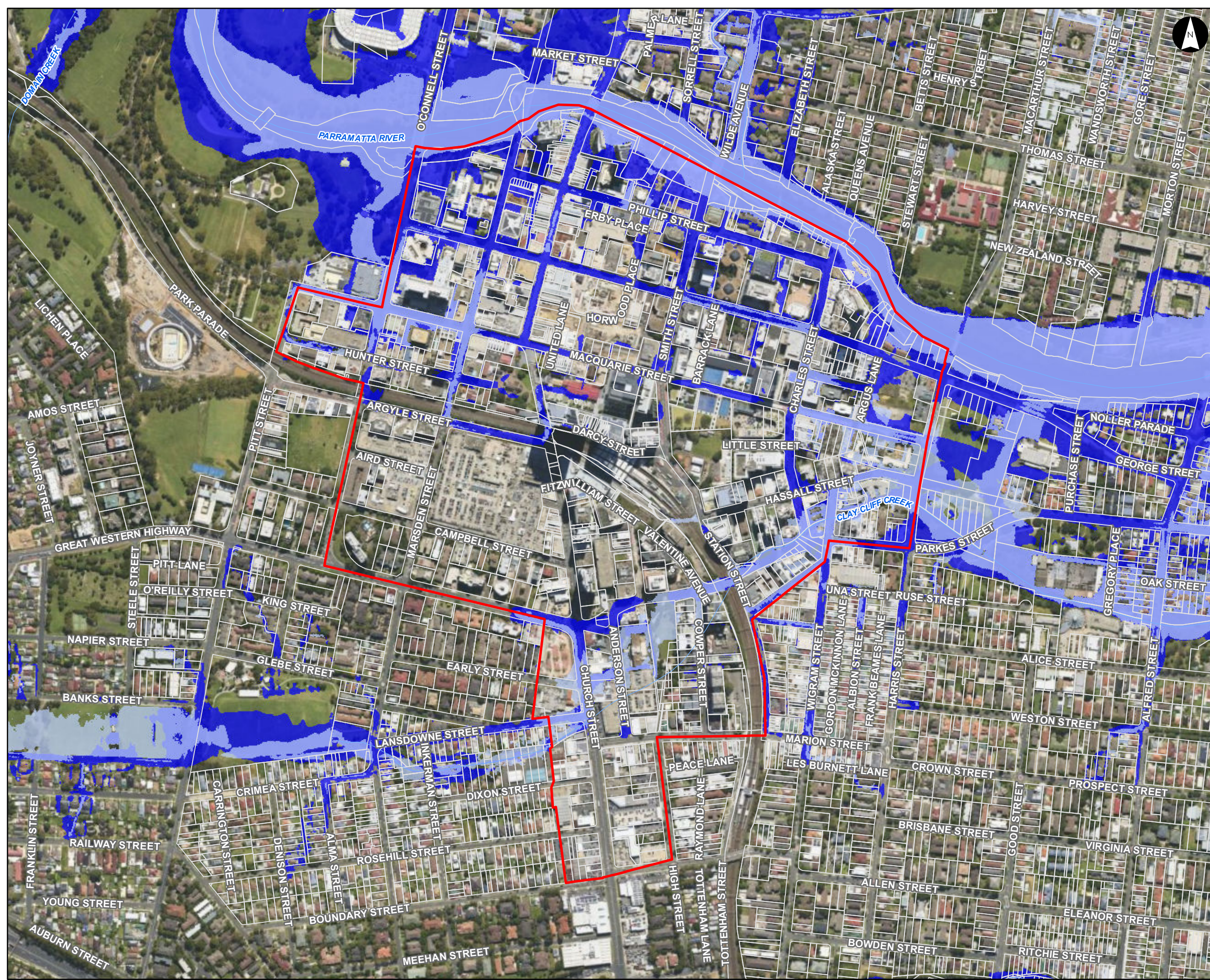
Stantec

0 75 150 225 300 Meters

Scale at A3 1:7,300



This document has been prepared based on information provided by others as cited in the data sources. Stantec has not verified the accuracy and/or completeness of this information and shall not be responsible for any errors or omissions which may be incorporated herein as a result. Stantec assumes no responsibility for data supplied in electronic format, and the recipient accepts full responsibility for verifying the accuracy and completeness of the data.



Flood Planning Constraints Categorisation Parramatta CBD

Parramatta River Flood Study

Project Code: 59916074
Drawn By: AS
Map: 59916074-GS-046-FPCC_DDP.mxd
Rev: 02
Date: 2023-06-13

Legend

- Area of Significance
- Watercourse
- Cadastre

Flood Planning Constraint Categories

- FPCC1
- FPCC2

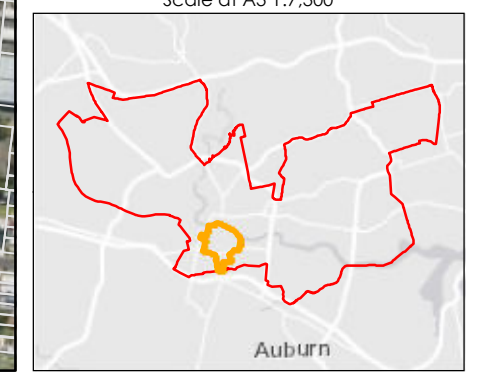
Figure O5.3

Notes:
1. Coordinate System: GDA 1994 MGA Zone 56

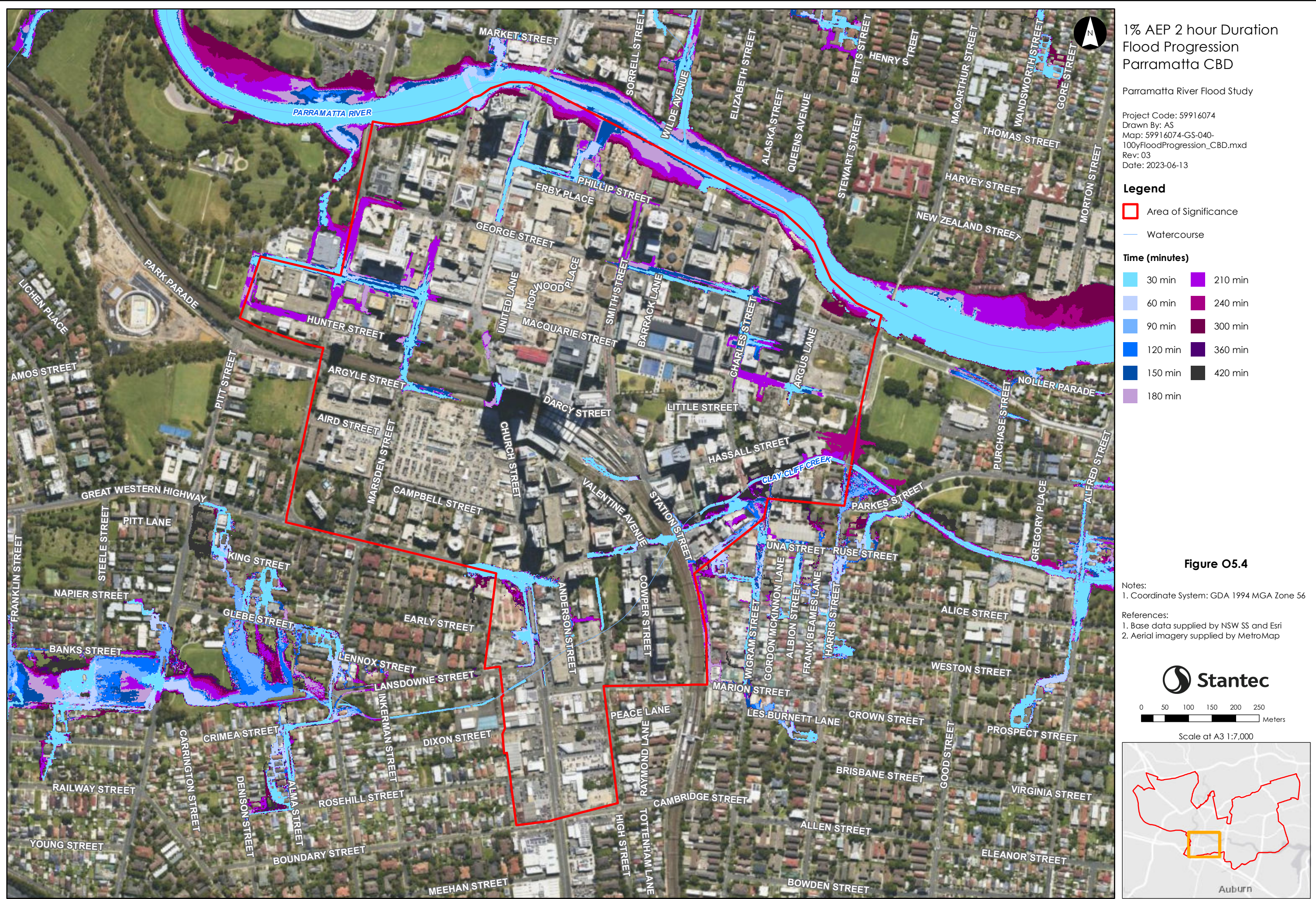
References:
1. Base data supplied by NSW SS and Esri
2. Aerial imagery supplied by MetroMap
3. Cadastre (2015) supplied by PCC

0 50 100 150 200 Meters

Scale at A3 1:7,300



This document has been prepared based on information provided by others as cited in the data sources. Stantec has not verified the accuracy and/or completeness of this information and shall not be responsible for any errors or omissions which may be incorporated herein as a result. Stantec assumes no responsibility for data supplied in electronic format, and the recipient accepts full responsibility for verifying the accuracy and completeness of the data.



1% AEP 2 hour Duration
Flood Progression
Parramatta CBD

Parramatta River Flood Study

Project Code: 59916074
Drawn By: AS
Map: 59916074-GS-040-
100yFloodProgression_CBD.mxd
Rev: 03
Date: 2023-06-13

Legend

- Area of Significance
- Watercourse

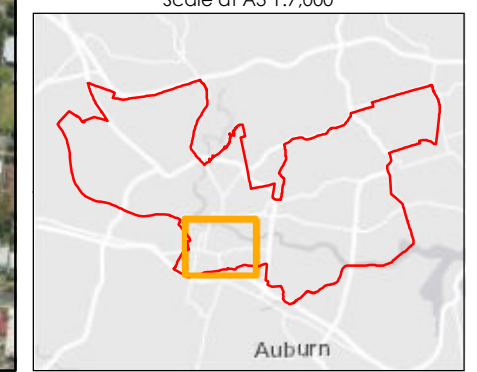
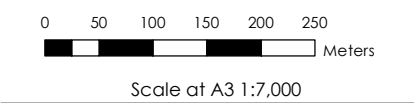
Time (minutes)

 30 min	 210 min
 60 min	 240 min
 90 min	 300 min
 120 min	 360 min
 150 min	 420 min
 180 min	

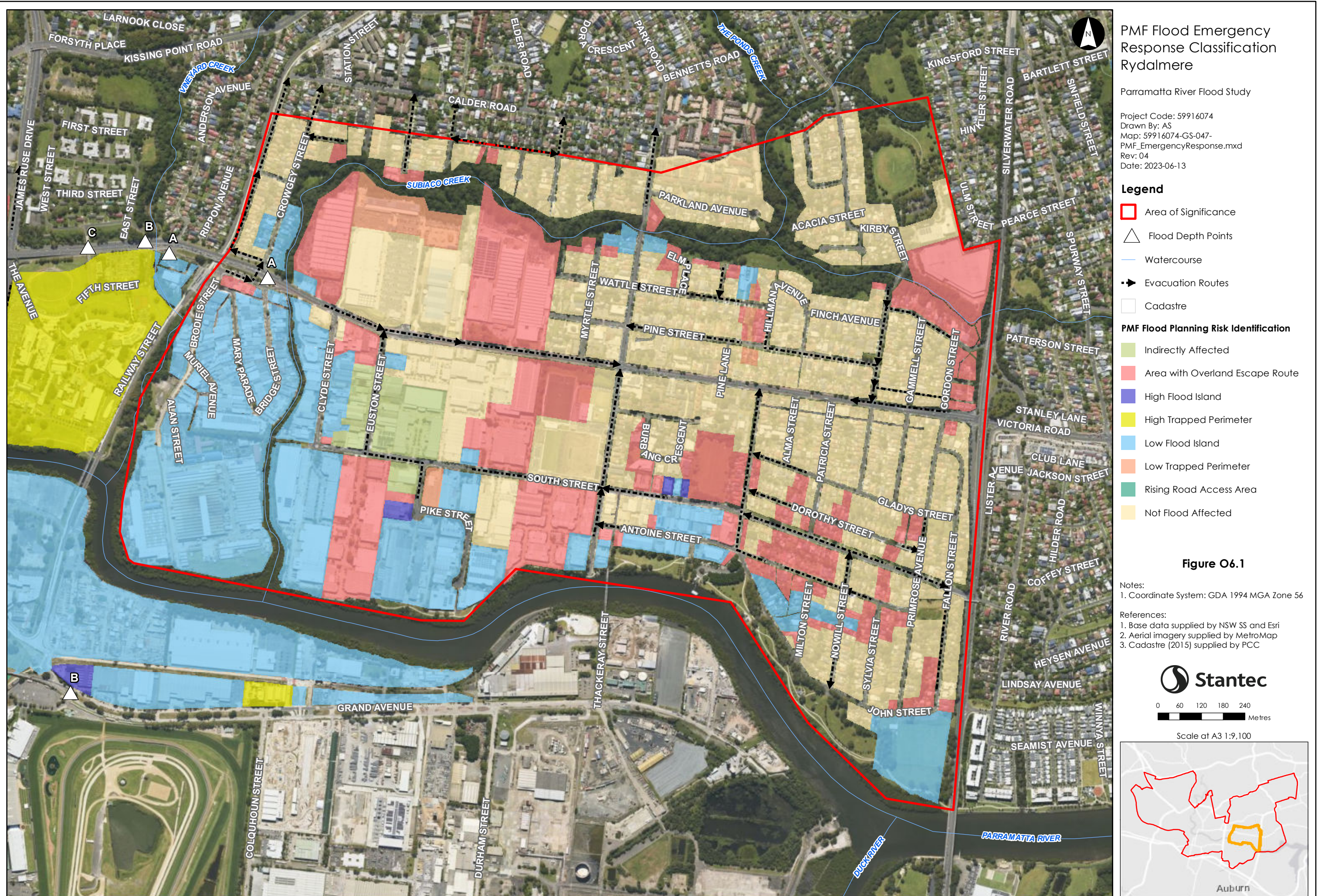
Figure O5.4

Notes:
1. Coordinate System: GDA 1994 MGA Zone 56

References:
1. Base data supplied by NSW SS and Esri
2. Aerial imagery supplied by MetroMap



This document has been prepared based on information provided by others as cited in the data sources. Stantec has not verified the accuracy and/or completeness of this information and shall not be responsible for any errors or omissions which may be incorporated herein as a result. Stantec assumes no responsibility for data supplied in electronic format, and the recipient accepts full responsibility for verifying the accuracy and completeness of the data.



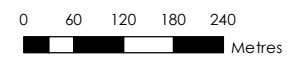
PMF Flood Emergency Response Classification Rydalmere
 Parramatta River Flood Study
 Project Code: 59916074
 Drawn By: AS
 Map: 59916074-GS-047-PMF_EmergencyResponse.mxd
 Rev: 04
 Date: 2023-06-13

- Legend**
- Area of Significance
 - Flood Depth Points
 - Watercourse
 - Evacuation Routes
 - Cadastre
- PMF Flood Planning Risk Identification**
- Indirectly Affected
 - Area with Overland Escape Route
 - High Flood Island
 - High Trapped Perimeter
 - Low Flood Island
 - Low Trapped Perimeter
 - Rising Road Access Area
 - Not Flood Affected

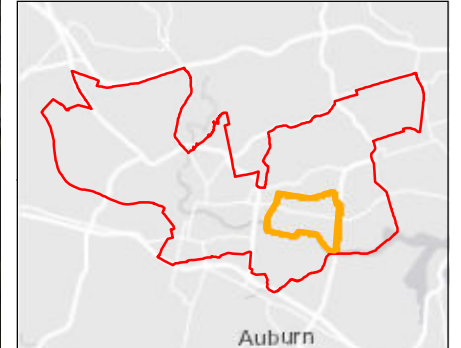
Figure O6.1

Notes:
 1. Coordinate System: GDA 1994 MGA Zone 56

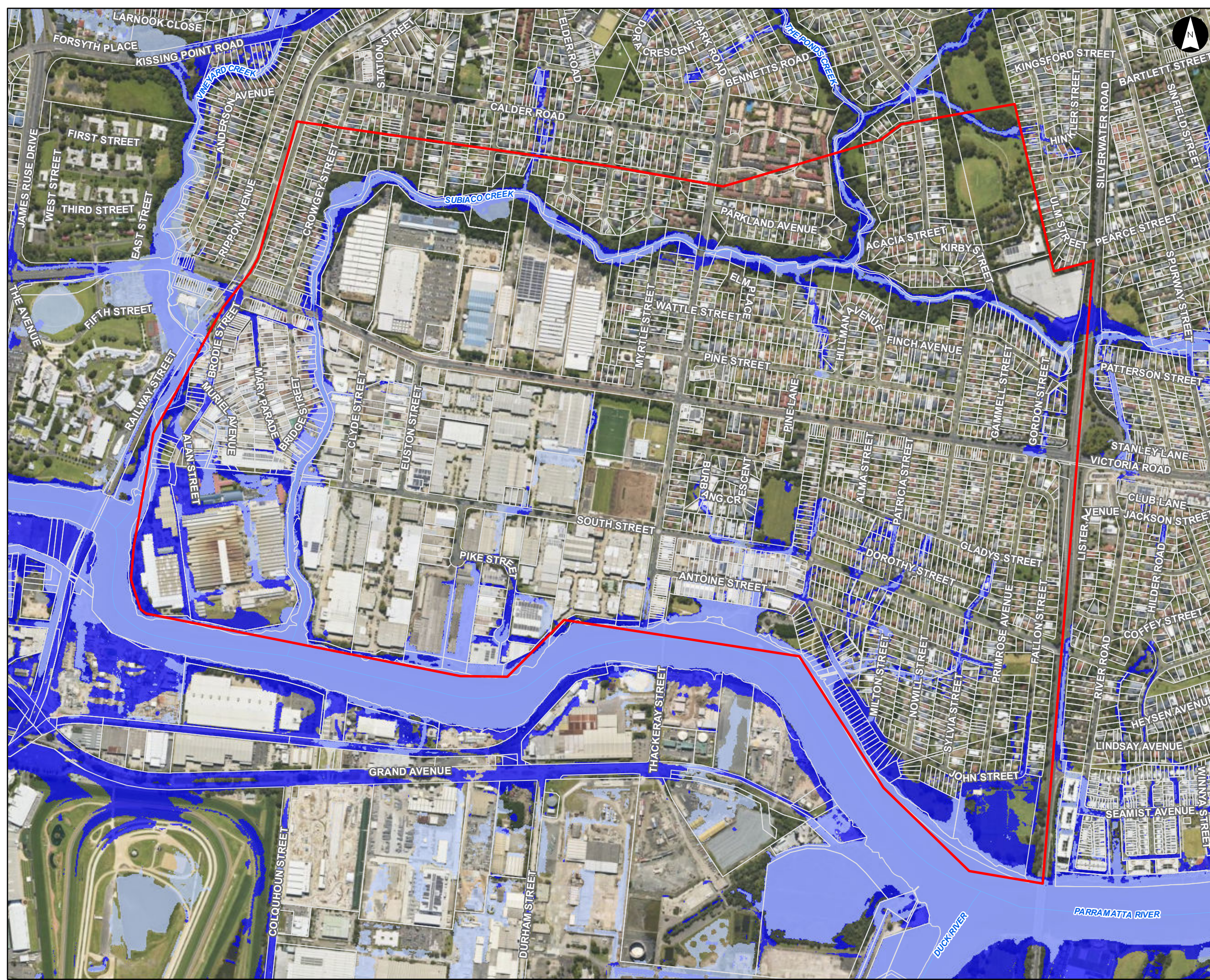
References:
 1. Base data supplied by NSW SS and Esri
 2. Aerial imagery supplied by MetroMap
 3. Cadastre (2015) supplied by PCC



Scale at A3 1:9,100



This document has been prepared based on information provided by others as cited in the data sources. Stantec has not verified the accuracy and/or completeness of this information and shall not be responsible for any errors or omissions which may be incorporated herein as a result. Stantec assumes no responsibility for data supplied in electronic format, and the recipient accepts full responsibility for verifying the accuracy and completeness of the data.



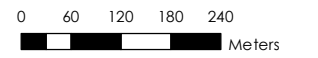
Flood Planning Constraints Categorisation Rydalmere

Parramatta River Flood Study
Project Code: 59916074
Drawn By: AS
Map: 59916074-GS-046-FPCC_DDP.mxd
Rev: 02
Date: 2023-06-13

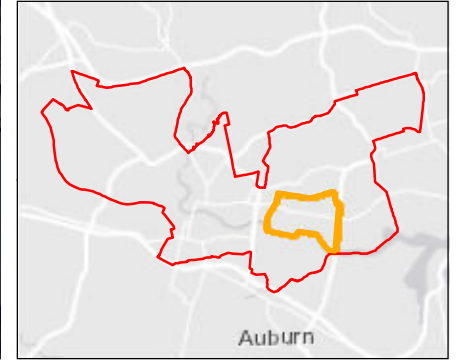
- Legend**
- Area of Significance
 - Watercourse
 - Cadastre
- Flood Planning Constraint Categories**
- FPCC1
 - FPCC2

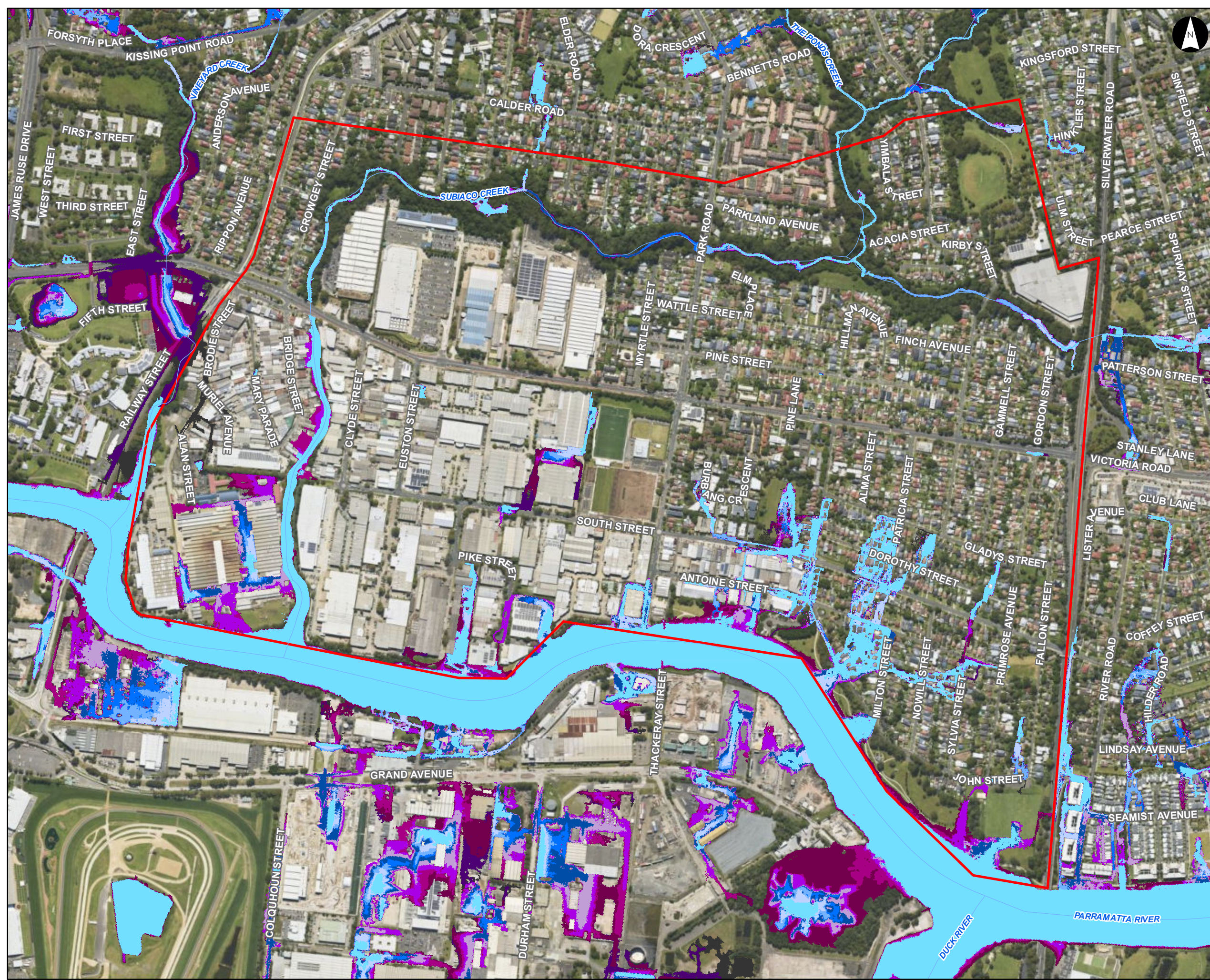
Figure O6.3

- Notes:
- Coordinate System: GDA 1994 MGA Zone 56
- References:
- Base data supplied by NSW SS and Esri
 - Aerial imagery supplied by MetroMap
 - Cadastre (2015) supplied by PCC



Scale at A3 1:9,100





1% AEP 3 hour Duration
Flood Progression
Rydalmere

Parramatta River Flood Study

Project Code: 59916074
Drawn By: AS
Map: 59916074-GS-043-
100yFloodProgression_Rydalmere.mxd
Rev: 03
Date: 2023-06-13

Legend

- Area of Significance
- Watercourse

Time (minutes)

 30 min	 210 min
 60 min	 240 min
 90 min	 300 min
 120 min	 360 min
 150 min	 420 min
 180 min	

Figure O6.4

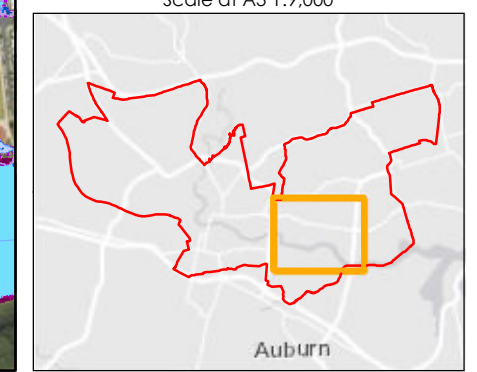
Notes:
1. Coordinate System: GDA 1994 MGA Zone 56

References:
1. Base data supplied by NSW SS and Esri
2. Aerial imagery supplied by MetroMap

Stantec

0 50 100 150 200 250
Meters

Scale at A3 1:9,000



This document has been prepared based on information provided by others as cited in the data sources. Stantec has not verified the accuracy and/or completeness of this information and shall not be responsible for any errors or omissions which may be incorporated herein as a result. Stantec assumes no responsibility for data supplied in electronic format, and the recipient accepts full responsibility for verifying the accuracy and completeness of the data.



**PMF Flood Emergency Response Classification
Westmead Biomedical**

Parramatta River Flood Study

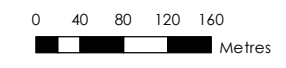
Project Code: 59916074
 Drawn By: AS
 Map: 59916074-GS-047-
 PMF_EmergencyResponse.mxd
 Rev: 04
 Date: 2023-06-13

- Legend**
- Area of Significance
 - Flood Depth Points
 - Watercourse
 - Evacuation Routes
 - Cadastre
- PMF Flood Planning Risk Identification**
- Indirectly Affected
 - Area with Overland Escape Route
 - High Flood Island
 - High Trapped Perimeter
 - Low Flood Island
 - Low Trapped Perimeter
 - Rising Road Access Area
 - Not Flood Affected

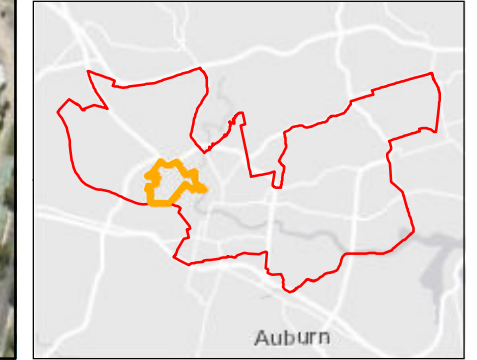
Figure O7.1

Notes:
 1. Coordinate System: GDA 1994 MGA Zone 56

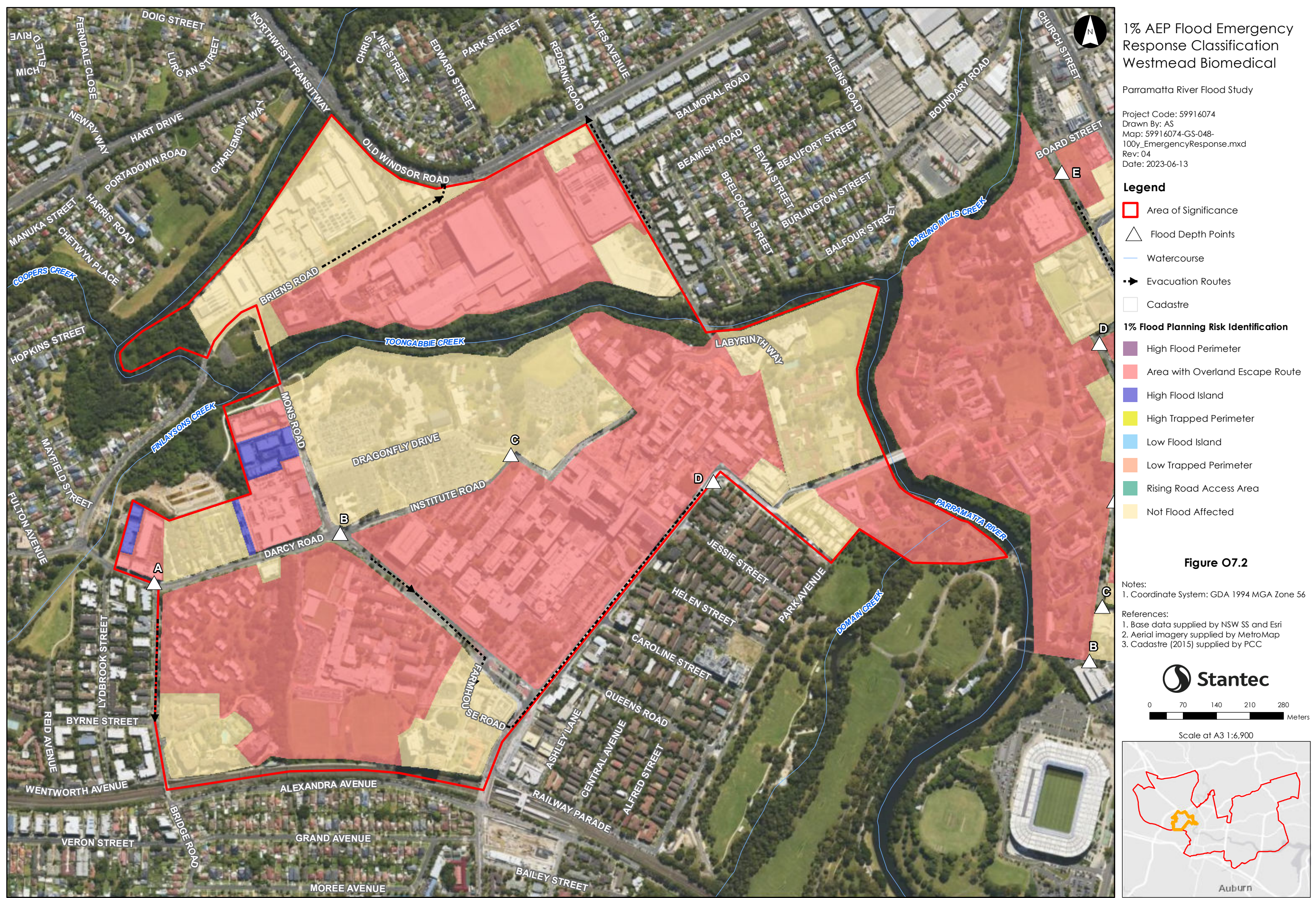
References:
 1. Base data supplied by NSW SS and Esri
 2. Aerial imagery supplied by MetroMap
 3. Cadastre (2015) supplied by PCC



Scale at A3 1:6,900



This document has been prepared based on information provided by others as cited in the data sources. Stantec has not verified the accuracy and/or completeness of this information and shall not be responsible for any errors or omissions which may be incorporated herein as a result. Stantec assumes no responsibility for data supplied in electronic format, and the recipient accepts full responsibility for verifying the accuracy and completeness of the data.



**1% AEP Flood Emergency Response Classification
Westmead Biomedical**

Parramatta River Flood Study

Project Code: 59916074
 Drawn By: AS
 Map: 59916074-GS-048-100y_EmergencyResponse.mxd
 Rev: 04
 Date: 2023-06-13

- Legend**
- Area of Significance
 - Flood Depth Points
 - Watercourse
 - Evacuation Routes
 - Cadastre
- 1% Flood Planning Risk Identification**
- High Flood Perimeter
 - Area with Overland Escape Route
 - High Flood Island
 - High Trapped Perimeter
 - Low Flood Island
 - Low Trapped Perimeter
 - Rising Road Access Area
 - Not Flood Affected

Figure O7.2

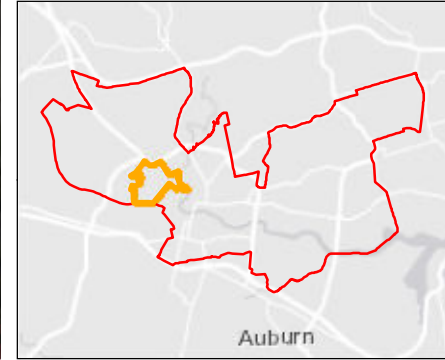
Notes:
 1. Coordinate System: GDA 1994 MGA Zone 56

References:
 1. Base data supplied by NSW SS and Esri
 2. Aerial imagery supplied by MetroMap
 3. Cadastre (2015) supplied by PCC

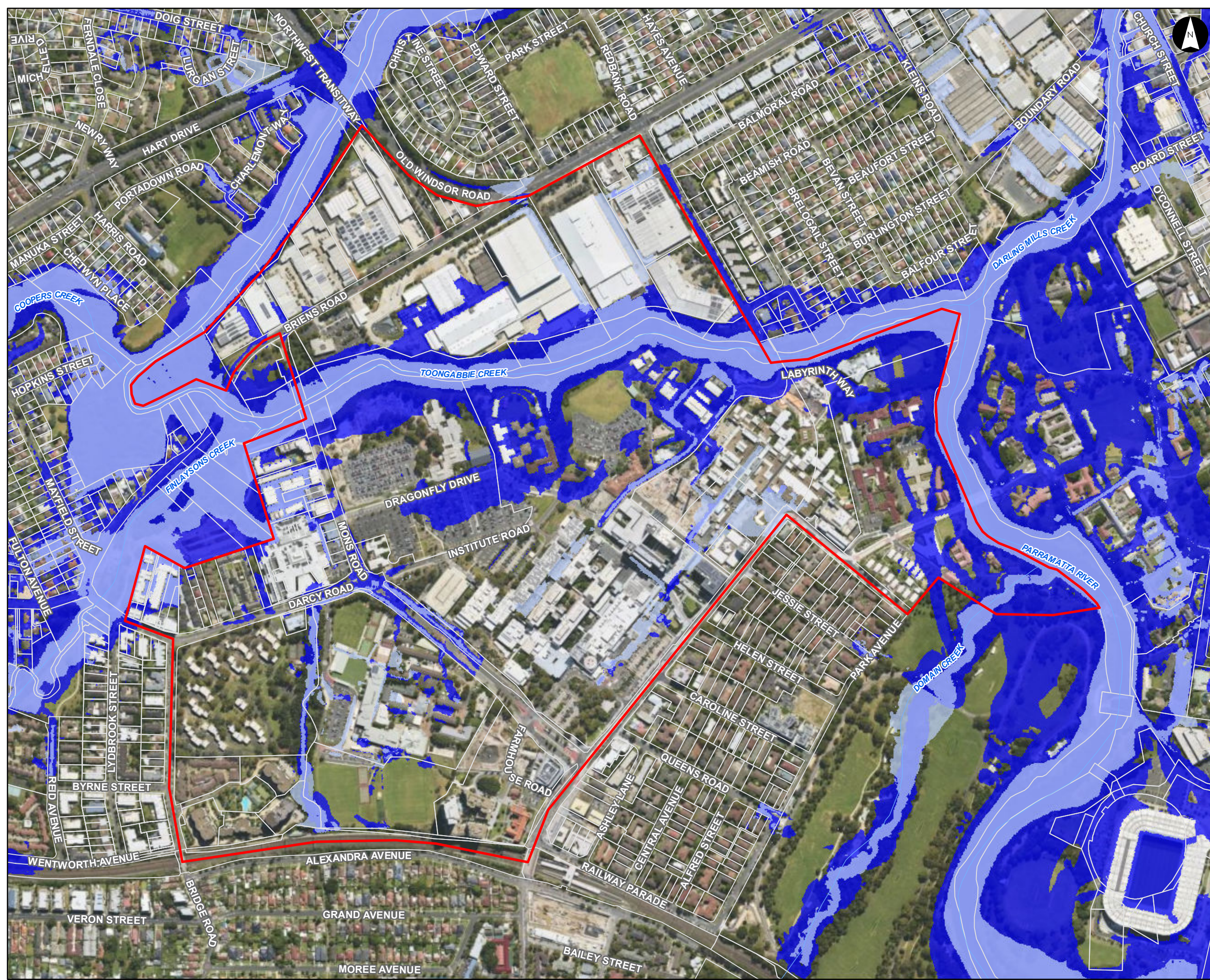
Stantec

0 70 140 210 280
Meters

Scale at A3 1:6,900



This document has been prepared based on information provided by others as cited in the data sources. Stantec has not verified the accuracy and/or completeness of this information and shall not be responsible for any errors or omissions which may be incorporated herein as a result. Stantec assumes no responsibility for data supplied in electronic format, and the recipient accepts full responsibility for verifying the accuracy and completeness of the data.



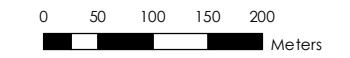
Flood Planning
Constraints Categorisation
Westmead Biomedical

Parramatta River Flood Study
Project Code: 59916074
Drawn By: AS
Map: 59916074-GS-046-FPCC_DDP.mxd
Rev: 02
Date: 2023-06-13

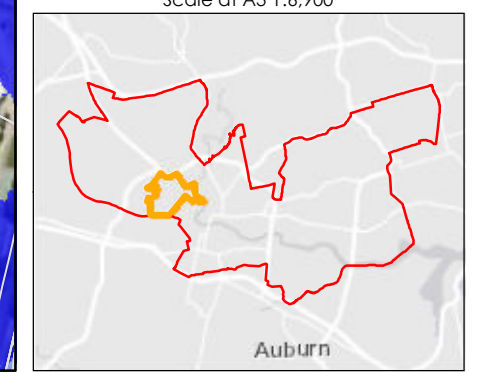
- Legend**
- Area of Significance
 - Watercourse
 - Cadastre
- Flood Planning Constraint Categories**
- FPCC1
 - FPCC2

Figure O7.3

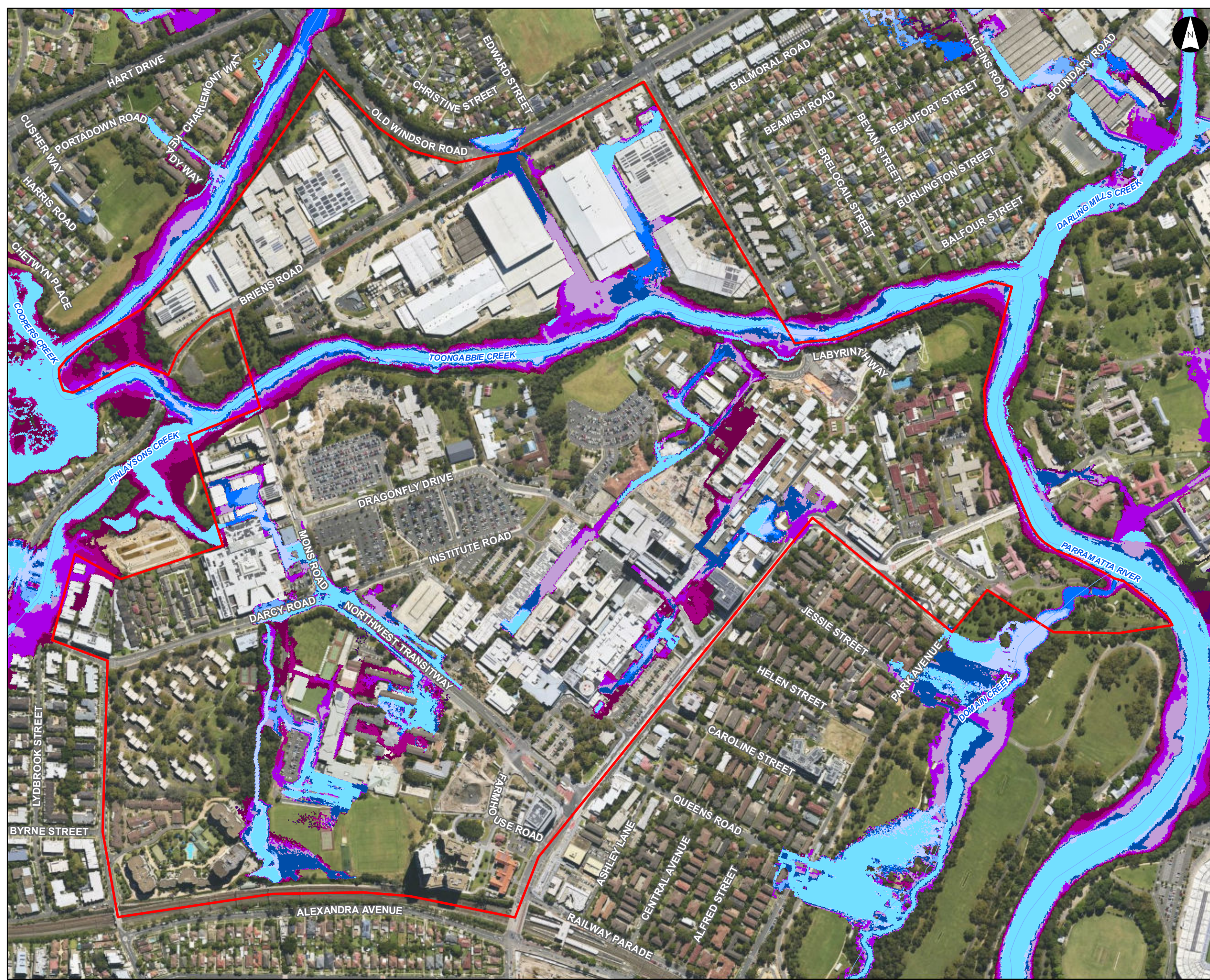
- Notes:
1. Coordinate System: GDA 1994 MGA Zone 56
- References:
1. Base data supplied by NSW SS and Esri
 2. Aerial imagery supplied by MetroMap
 3. Cadastre (2015) supplied by PCC



Scale at A3 1:6,900



This document has been prepared based on information provided by others as cited in the data sources. Stantec has not verified the accuracy and/or completeness of this information and shall not be responsible for any errors or omissions which may be incorporated herein as a result. Stantec assumes no responsibility for data supplied in electronic format, and the recipient accepts full responsibility for verifying the accuracy and completeness of the data.



1% AEP 2 hour Duration
Flood Progression
Westmead Biomedical

Parramatta River Flood Study
Project Code: 59916074
Drawn By: AS
Map: 59916074-GS-044-
100yFloodProgression_WB.mxd
Rev: 03
Date: 2023-06-13

Legend

- Area of Significance
- Watercourse

Time (minutes)

30 min	210 min
60 min	240 min
90 min	300 min
120 min	360 min
150 min	420 min
180 min	

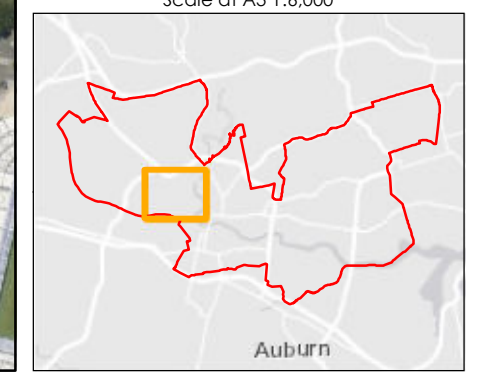
Figure O7.4

Notes:
1. Coordinate System: GDA 1994 MGA Zone 56

References:
1. Base data supplied by NSW SS and Esri
2. Aerial imagery supplied by MetroMap

Scale at A3 1:6,000

0 50 100 150 200 Metres



This document has been prepared based on information provided by others as cited in the data sources. Stantec has not verified the accuracy and/or completeness of this information and shall not be responsible for any errors or omissions which may be incorporated herein as a result. Stantec assumes no responsibility for data supplied in electronic format, and the recipient accepts full responsibility for verifying the accuracy and completeness of the data.