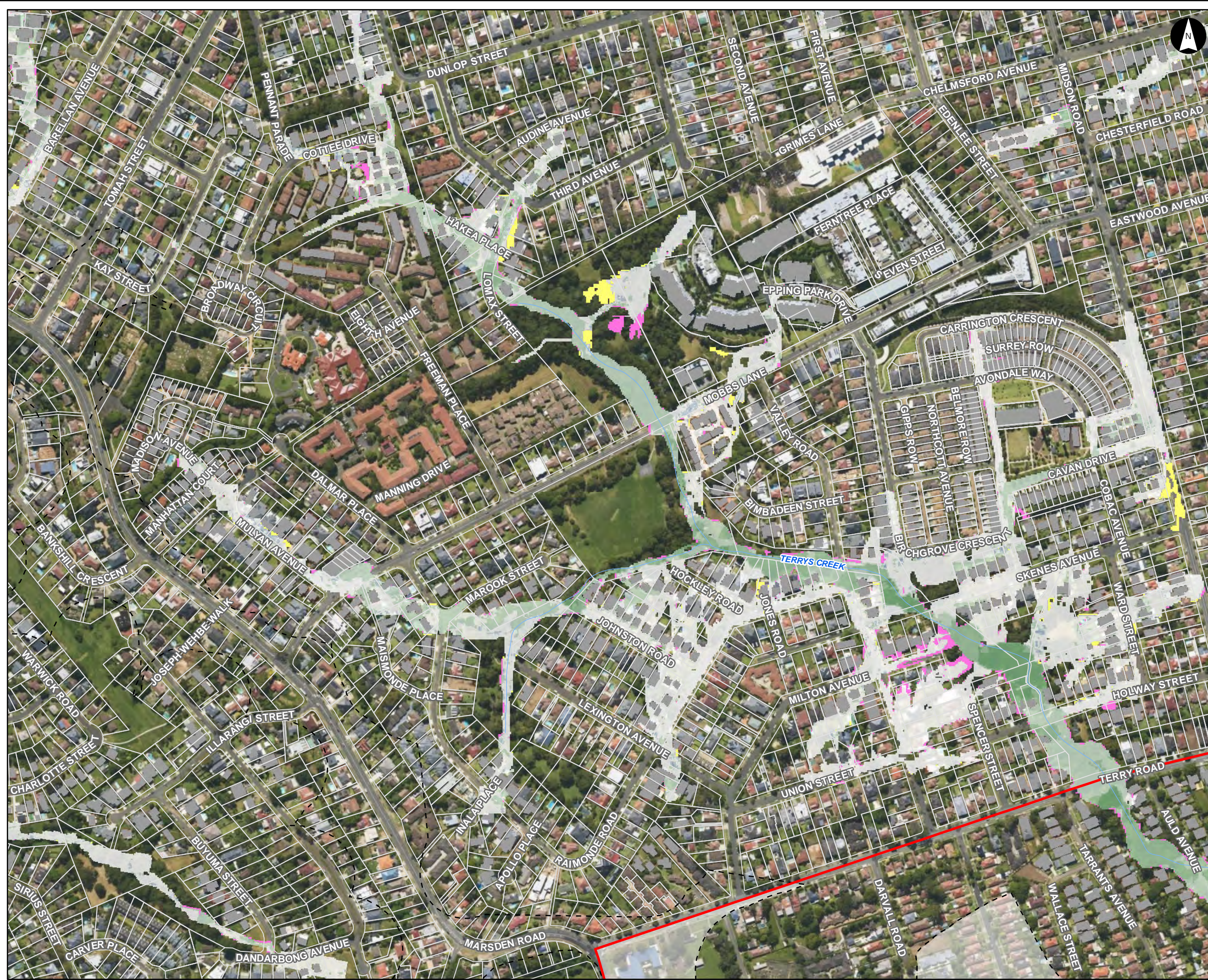


This document has been prepared based on information provided by others as cited in the data sources. Stantec has not verified the accuracy and/or completeness of this information and shall not be responsible for any errors or omissions which may be incorporated herein as a result. Stantec assumes no responsibility for data supplied in electronic format, and the recipient accepts full responsibility for verifying the accuracy and completeness of the data.



Climate Change Scenario
 CC3 FFA 1% AEP with RCP
 4.5 2090 Rainfall Increase
 with 2090 Sea Level Rise -
 Water Level Difference Plot

Parramatta River Flood Study
 Project Code: 59916074
 Drawn By: AS
 Map: 59916074-GS-083-
 1p_CC_RCP4.5_w2090SLR_WLD_5k.mxd
 Rev: 06
 Date: 2023-06-14

Legend

- Study Area
- Watercourse
- Cadastre
- Building Footprint
- Tuflow Model Extent

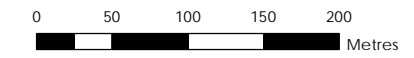
RCP4.5 2090 FFA1% Water Level Difference (CC3 less Design FFA 1pc)

- Was Wet Now Dry
- Was Dry Now Wet
- < -0.5
- 0.5 to -0.2
- 0.2 to -0.1
- 0.1 to -0.05
- 0.05 to -0.01
- 0.01 to 0.01
- 0.01 to 0.05
- 0.05 to 0.1
- 0.1 to 0.2
- 0.2 to 0.5
- > 0.5

Figure N7.12

Notes:
 1. Coordinate System: GDA 1994 MGA Zone 56

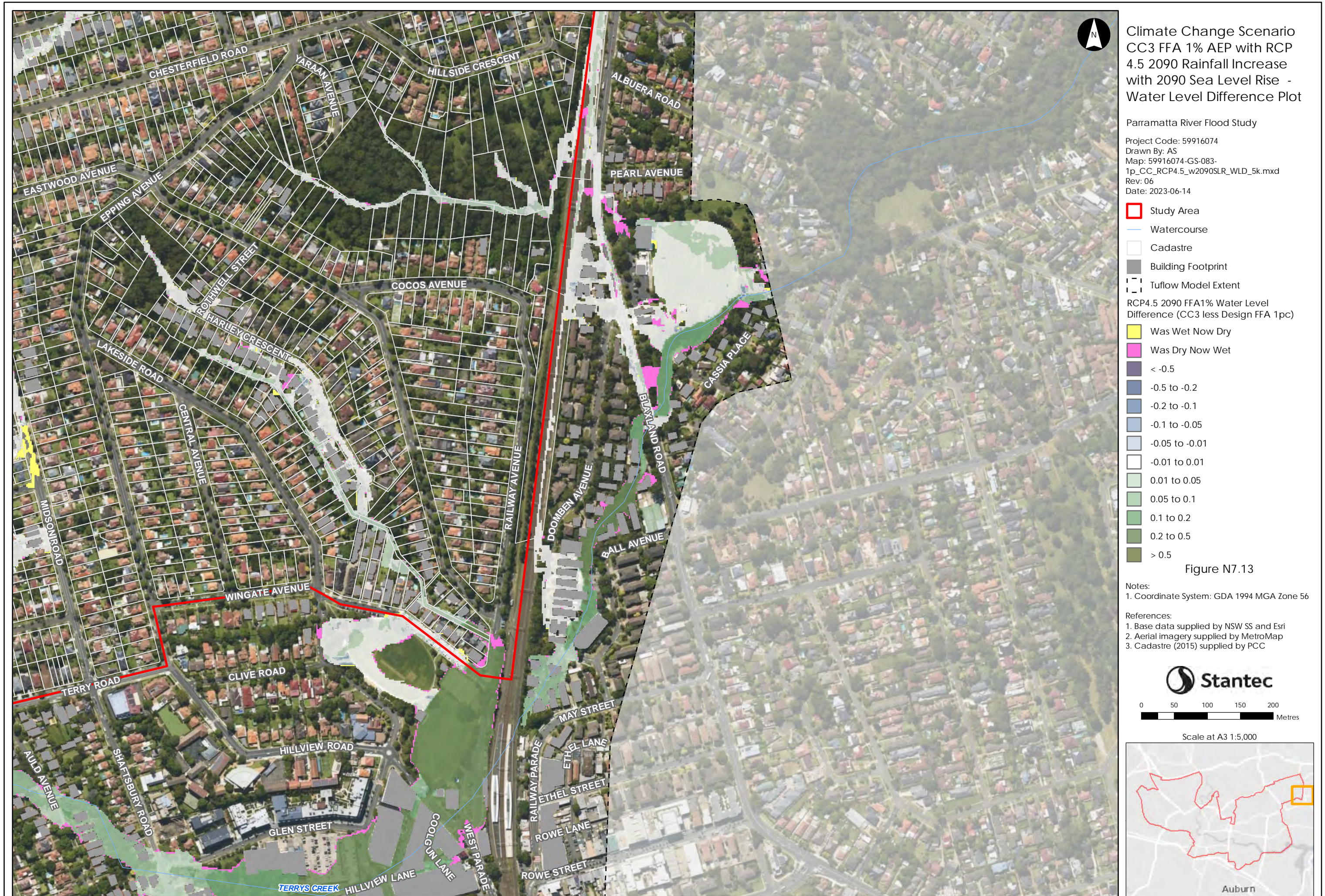
References:
 1. Base data supplied by NSW SS and Esri
 2. Aerial imagery supplied by MetroMap
 3. Cadastre (2015) supplied by PCC



Scale at A3 1:5,000



This document has been prepared based on information provided by others as cited in the data sources. Stantec has not verified the accuracy and/or completeness of this information and shall not be responsible for any errors or omissions which may be incorporated herein as a result. Stantec assumes no responsibility for data supplied in electronic format, and the recipient accepts full responsibility for verifying the accuracy and completeness of the data.





Climate Change Scenario
 CC3 FFA 1% AEP with RCP
 4.5 2090 Rainfall Increase
 with 2090 Sea Level Rise -
 Water Level Difference Plot

Parramatta River Flood Study
 Project Code: 59916074
 Drawn By: AS
 Map: 59916074-GS-083-
 1p_CC_RCP4.5_w2090SLR_WLD_5k.mxd
 Rev: 06
 Date: 2023-06-14

Legend

- Study Area
- Watercourse
- Cadastre
- Building Footprint
- Tuflow Model Extent

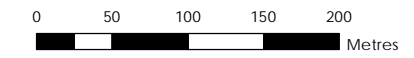
RCP4.5 2090 FFA1% Water Level Difference (CC3 less Design FFA 1pc)

- Was Wet Now Dry
- Was Dry Now Wet
- < -0.5
- 0.5 to -0.2
- 0.2 to -0.1
- 0.1 to -0.05
- 0.05 to -0.01
- 0.01 to 0.01
- 0.01 to 0.05
- 0.05 to 0.1
- 0.1 to 0.2
- 0.2 to 0.5
- > 0.5

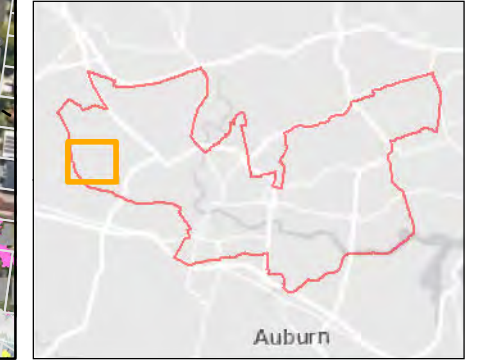
Figure N7.14

Notes:
 1. Coordinate System: GDA 1994 MGA Zone 56

References:
 1. Base data supplied by NSW SS and Esri
 2. Aerial imagery supplied by MetroMap
 3. Cadastre (2015) supplied by PCC



Scale at A3 1:5,000





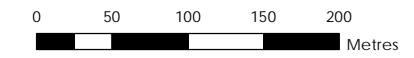
Climate Change Scenario
CC3 FFA 1% AEP with RCP
4.5 2090 Rainfall Increase
with 2090 Sea Level Rise -
Water Level Difference Plot

Parramatta River Flood Study
Project Code: 59916074
Drawn By: AS
Map: 59916074-GS-083-
1p_CC_RCP4.5_w2090SLR_WLD_5k.mxd
Rev: 06
Date: 2023-06-14

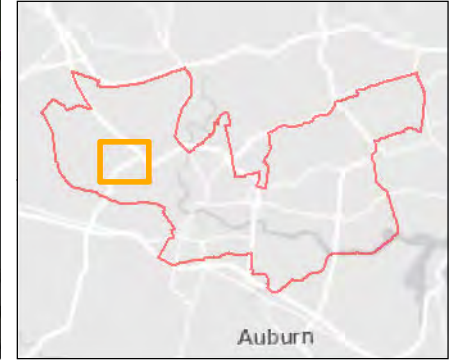
- Study Area
- Watercourse
- Cadastre
- Building Footprint
- Tuflow Model Extent
- RCP4.5 2090 FFA1% Water Level Difference (CC3 less Design FFA 1pc) Was Wet Now Dry
- Was Dry Now Wet
- < -0.5
- 0.5 to -0.2
- 0.2 to -0.1
- 0.1 to -0.05
- 0.05 to -0.01
- 0.01 to 0.01
- 0.01 to 0.05
- 0.05 to 0.1
- 0.1 to 0.2
- 0.2 to 0.5
- > 0.5

Figure N7.15

- Notes:
- Coordinate System: GDA 1994 MGA Zone 56
- References:
- Base data supplied by NSW SS and Esri
 - Aerial imagery supplied by MetroMap
 - Cadastre (2015) supplied by PCC



Scale at A3 1:5,000



This document has been prepared based on information provided by others as cited in the data sources. Stantec has not verified the accuracy and/or completeness of this information and shall not be responsible for any errors or omissions which may be incorporated herein as a result. Stantec assumes no responsibility for data supplied in electronic format, and the recipient accepts full responsibility for verifying the accuracy and completeness of the data.



This document has been prepared based on information provided by others as cited in the data sources. Stantec has not verified the accuracy and/or completeness of this information and shall not be responsible for any errors or omissions which may be incorporated herein as a result. Stantec assumes no responsibility for data supplied in electronic format, and the recipient accepts full responsibility for verifying the accuracy and completeness of the data.



Climate Change Scenario
CC3 FFA 1% AEP with RCP
4.5 2090 Rainfall Increase
with 2090 Sea Level Rise -
Water Level Difference Plot

Parramatta River Flood Study

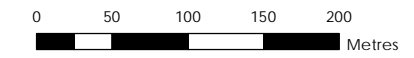
Project Code: 59916074
Drawn By: AS
Map: 59916074-GS-083-
1p_CC_RCP4.5_w2090SLR_WLD_5k.mxd
Rev: 06
Date: 2023-06-14

- Study Area
- Watercourse
- Cadastre
- Building Footprint
- Tuflow Model Extent
- RCP4.5 2090 FFA1% Water Level Difference (CC3 less Design FFA 1pc)**
- Was Wet Now Dry
- Was Dry Now Wet
- < -0.5
- 0.5 to -0.2
- 0.2 to -0.1
- 0.1 to -0.05
- 0.05 to -0.01
- 0.01 to 0.01
- 0.01 to 0.05
- 0.05 to 0.1
- 0.1 to 0.2
- 0.2 to 0.5
- > 0.5

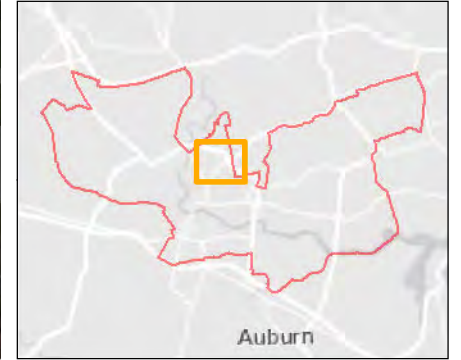
Figure N7.17

Notes:
1. Coordinate System: GDA 1994 MGA Zone 56

- References:
- 1. Base data supplied by NSW SS and Esri
 - 2. Aerial imagery supplied by MetroMap
 - 3. Cadastre (2015) supplied by PCC



Scale at A3 1:5,000



This document has been prepared based on information provided by others as cited in the data sources. Stantec has not verified the accuracy and/or completeness of this information and shall not be responsible for any errors or omissions which may be incorporated herein as a result. Stantec assumes no responsibility for data supplied in electronic format, and the recipient accepts full responsibility for verifying the accuracy and completeness of the data.



Climate Change Scenario
 CC3 FFA 1% AEP with RCP
 4.5 2090 Rainfall Increase
 with 2090 Sea Level Rise -
 Water Level Difference Plot

Parramatta River Flood Study
 Project Code: 59916074
 Drawn By: AS
 Map: 59916074-GS-083-
 1p_CC_RCP4.5_w2090SLR_WLD_5k.mxd
 Rev: 06
 Date: 2023-06-14

Study Area

- Study Area
- Watercourse
- Cadastre
- Building Footprint
- Tuflow Model Extent

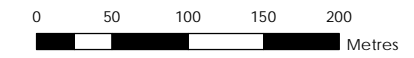
RCP4.5 2090 FFA1% Water Level Difference (CC3 less Design FFA 1pc)

- Was Wet Now Dry
- Was Dry Now Wet
- < -0.5
- 0.5 to -0.2
- 0.2 to -0.1
- 0.1 to -0.05
- 0.05 to -0.01
- 0.01 to 0.01
- 0.01 to 0.05
- 0.05 to 0.1
- 0.1 to 0.2
- 0.2 to 0.5
- > 0.5

Figure N7.18

Notes:
1. Coordinate System: GDA 1994 MGA Zone 56

References:
 1. Base data supplied by NSW SS and Esri
 2. Aerial imagery supplied by MetroMap
 3. Cadastre (2015) supplied by PCC



Scale at A3 1:5,000





Climate Change Scenario
 CC3 FFA 1% AEP with RCP
 4.5 2090 Rainfall Increase
 with 2090 Sea Level Rise -
 Water Level Difference Plot

Parramatta River Flood Study
 Project Code: 59916074
 Drawn By: AS
 Map: 59916074-GS-083-
 1p_CC_RCP4.5_w2090SLR_WLD_5k.mxd
 Rev: 06
 Date: 2023-06-14

Study Area

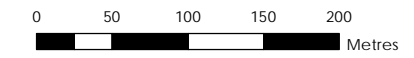
- Watercourse
- Cadastre
- Building Footprint
- Tuflow Model Extent

RCP4.5 2090 FFA1% Water Level Difference (CC3 less Design FFA 1pc)

- Was Wet Now Dry
- Was Dry Now Wet
- < -0.5
- 0.5 to -0.2
- 0.2 to -0.1
- 0.1 to -0.05
- 0.05 to -0.01
- 0.01 to 0.01
- 0.01 to 0.05
- 0.05 to 0.1
- 0.1 to 0.2
- 0.2 to 0.5
- > 0.5

Figure N7.19

- Notes:
- Coordinate System: GDA 1994 MGA Zone 56
- References:
- Base data supplied by NSW SS and Esri
 - Aerial imagery supplied by MetroMap
 - Cadastre (2015) supplied by PCC



Scale at A3 1:5,000



This document has been prepared based on information provided by others as cited in the data sources. Stantec has not verified the accuracy and/or completeness of this information and shall not be responsible for any errors or omissions which may be incorporated herein as a result. Stantec assumes no responsibility for data supplied in electronic format, and the recipient accepts full responsibility for verifying the accuracy and completeness of the data.



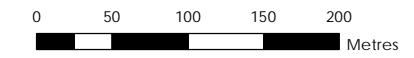
Climate Change Scenario
 CC3 FFA 1% AEP with RCP
 4.5 2090 Rainfall Increase
 with 2090 Sea Level Rise -
 Water Level Difference Plot

Parramatta River Flood Study
 Project Code: 59916074
 Drawn By: AS
 Map: 59916074-GS-083-
 1p_CC_RCP4.5_w2090SLR_WLD_5k.mxd
 Rev: 06
 Date: 2023-06-14

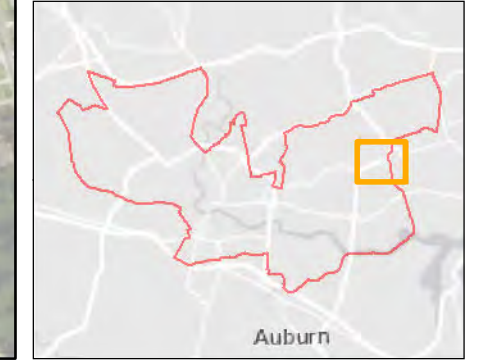
- Study Area
- Watercourse
- Cadastre
- Building Footprint
- Tuflow Model Extent
- RCP4.5 2090 FFA1% Water Level Difference (CC3 less Design FFA 1pc)
Was Wet Now Dry
- Was Dry Now Wet
- -0.5
- 0.5 to -0.2
- 0.2 to -0.1
- 0.1 to -0.05
- 0.05 to -0.01
- 0.01 to 0.01
- 0.01 to 0.05
- 0.05 to 0.1
- 0.1 to 0.2
- 0.2 to 0.5
- > 0.5

Figure N7.20

- Notes:
1. Coordinate System: GDA 1994 MGA Zone 56
- References:
1. Base data supplied by NSW SS and Esri
 2. Aerial imagery supplied by MetroMap
 3. Cadastre (2015) supplied by PCC



Scale at A3 1:5,000



This document has been prepared based on information provided by others as cited in the data sources. Stantec has not verified the accuracy and/or completeness of this information and shall not be responsible for any errors or omissions which may be incorporated herein as a result. Stantec assumes no responsibility for data supplied in electronic format, and the recipient accepts full responsibility for verifying the accuracy and completeness of the data.



Climate Change Scenario
 CC3 FFA 1% AEP with RCP
 4.5 2090 Rainfall Increase
 with 2090 Sea Level Rise -
 Water Level Difference Plot

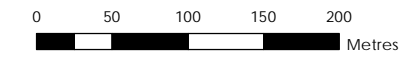
Parramatta River Flood Study
 Project Code: 59916074
 Drawn By: AS
 Map: 59916074-GS-083-
 1p_CC_RCP4.5_w2090SLR_WLD_5k.mxd
 Rev: 06
 Date: 2023-06-14

- Study Area
- Watercourse
- Cadastre
- Building Footprint
- Tuflow Model Extent
- RCP4.5 2090 FFA1% Water Level Difference (CC3 less Design FFA 1pc)
- Was Wet Now Dry
- Was Dry Now Wet
- -0.5
- -0.5 to -0.2
- -0.2 to -0.1
- -0.1 to -0.05
- -0.05 to -0.01
- -0.01 to 0.01
- 0.01 to 0.05
- 0.05 to 0.1
- 0.1 to 0.2
- 0.2 to 0.5
- > 0.5

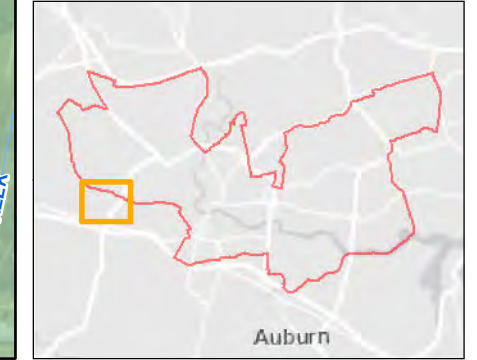
Figure N7.21

Notes:
1. Coordinate System: GDA 1994 MGA Zone 56

- References:
1. Base data supplied by NSW SS and Esri
 2. Aerial imagery supplied by MetroMap
 3. Cadastre (2015) supplied by PCC



Scale at A3 1:5,000





Climate Change Scenario
 CC3 FFA 1% AEP with RCP
 4.5 2090 Rainfall Increase
 with 2090 Sea Level Rise -
 Water Level Difference Plot

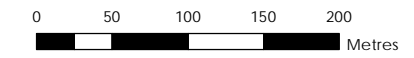
Parramatta River Flood Study
 Project Code: 59916074
 Drawn By: AS
 Map: 59916074-GS-083-
 1p_CC_RCP4.5_w2090SLR_WLD_5k.mxd
 Rev: 06
 Date: 2023-06-14

- Study Area
- Watercourse
- Cadastre
- Building Footprint
- Tuflow Model Extent
- RCP4.5 2090 FFA1% Water Level Difference (CC3 less Design FFA 1pc)
Was Wet Now Dry
- Was Dry Now Wet
- < -0.5
- 0.5 to -0.2
- 0.2 to -0.1
- 0.1 to -0.05
- 0.05 to -0.01
- 0.01 to 0.01
- 0.01 to 0.05
- 0.05 to 0.1
- 0.1 to 0.2
- 0.2 to 0.5
- > 0.5

Figure N7.22

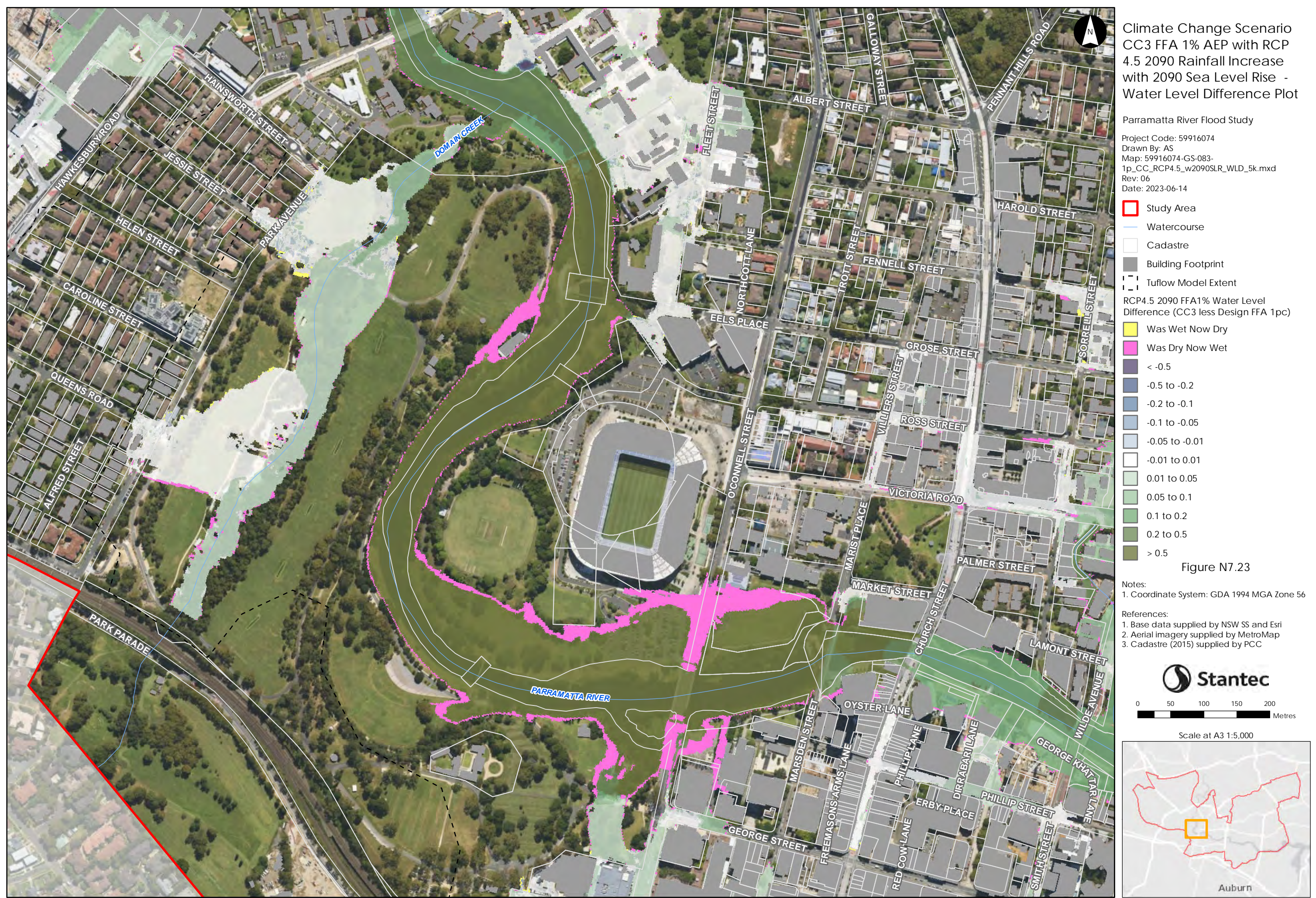
Notes:
 1. Coordinate System: GDA 1994 MGA Zone 56

- References:
1. Base data supplied by NSW SS and Esri
 2. Aerial imagery supplied by MetroMap
 3. Cadastre (2015) supplied by PCC



Scale at A3 1:5,000





This document has been prepared based on information provided by others as cited in the data sources. Stantec has not verified the accuracy and/or completeness of this information and shall not be responsible for any errors or omissions which may be incorporated herein as a result. Stantec assumes no responsibility for data supplied in electronic format, and the recipient accepts full responsibility for verifying the accuracy and completeness of the data.



Climate Change Scenario
CC3 FFA 1% AEP with RCP
4.5 2090 Rainfall Increase
with 2090 Sea Level Rise -
Water Level Difference Plot

Parramatta River Flood Study
Project Code: 59916074
Drawn By: AS
Map: 59916074-GS-083-
1p_CC_RCP4.5_w2090SLR_WLD_5k.mxd
Rev: 06
Date: 2023-06-14

Study Area

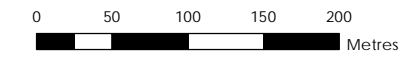
- Watercourse
- Cadastre
- Building Footprint
- Tuflow Model Extent

RCP4.5 2090 FFA1% Water Level Difference (CC3 less Design FFA 1pc)

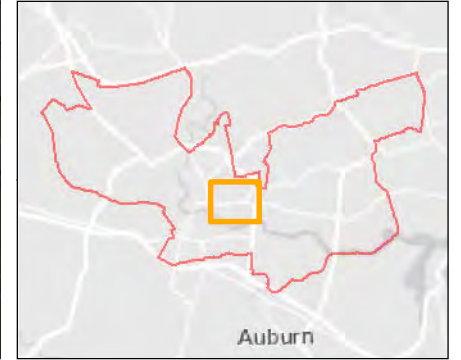
- Was Wet Now Dry
- Was Dry Now Wet
- < -0.5
- 0.5 to -0.2
- 0.2 to -0.1
- 0.1 to -0.05
- 0.05 to -0.01
- 0.01 to 0.01
- 0.01 to 0.05
- 0.05 to 0.1
- 0.1 to 0.2
- 0.2 to 0.5
- > 0.5

Figure N7.24

- Notes:
- Coordinate System: GDA 1994 MGA Zone 56
- References:
- Base data supplied by NSW SS and Esri
 - Aerial imagery supplied by MetroMap
 - Cadastre (2015) supplied by PCC



Scale at A3 1:5,000



This document has been prepared based on information provided by others as cited in the data sources. Stantec has not verified the accuracy and/or completeness of this information and shall not be responsible for any errors or omissions which may be incorporated herein as a result. Stantec assumes no responsibility for data supplied in electronic format, and the recipient accepts full responsibility for verifying the accuracy and completeness of the data.



Climate Change Scenario
 CC3 FFA 1% AEP with RCP
 4.5 2090 Rainfall Increase
 with 2090 Sea Level Rise -
 Water Level Difference Plot

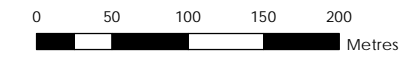
Parramatta River Flood Study
 Project Code: 59916074
 Drawn By: AS
 Map: 59916074-GS-083-
 1p_CC_RCP4.5_w2090SLR_WLD_5k.mxd
 Rev: 06
 Date: 2023-06-14

- Study Area
- Watercourse
- Cadastre
- Building Footprint
- Tuflow Model Extent
- RCP4.5 2090 FFA1% Water Level Difference (CC3 less Design FFA 1pc)**
- Was Wet Now Dry
- Was Dry Now Wet
- < -0.5
- 0.5 to -0.2
- 0.2 to -0.1
- 0.1 to -0.05
- 0.05 to -0.01
- 0.01 to 0.01
- 0.01 to 0.05
- 0.05 to 0.1
- 0.1 to 0.2
- 0.2 to 0.5
- > 0.5

Figure N7.25

Notes:
 1. Coordinate System: GDA 1994 MGA Zone 56

References:
 1. Base data supplied by NSW SS and Esri
 2. Aerial imagery supplied by MetroMap
 3. Cadastre (2015) supplied by PCC



Scale at A3 1:5,000



This document has been prepared based on information provided by others as cited in the data sources. Stantec has not verified the accuracy and/or completeness of this information and shall not be responsible for any errors or omissions which may be incorporated herein as a result. Stantec assumes no responsibility for data supplied in electronic format, and the recipient accepts full responsibility for verifying the accuracy and completeness of the data.



Climate Change Scenario
 CC3 FFA 1% AEP with RCP
 4.5 2090 Rainfall Increase
 with 2090 Sea Level Rise -
 Water Level Difference Plot

Parramatta River Flood Study
 Project Code: 59916074
 Drawn By: AS
 Map: 59916074-GS-083-
 1p_CC_RCP4.5_w2090SLR_WLD_5k.mxd
 Rev: 06
 Date: 2023-06-14

Legend

- Study Area
- Watercourse
- Cadastre
- Building Footprint
- Tuflow Model Extent

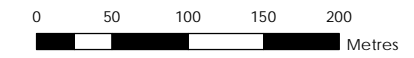
RCP4.5 2090 FFA1% Water Level Difference (CC3 less Design FFA 1pc)

- Was Wet Now Dry
- Was Dry Now Wet
- < -0.5
- 0.5 to -0.2
- 0.2 to -0.1
- 0.1 to -0.05
- 0.05 to -0.01
- 0.01 to 0.01
- 0.01 to 0.05
- 0.05 to 0.1
- 0.1 to 0.2
- 0.2 to 0.5
- > 0.5

Figure N7.26

Notes:
 1. Coordinate System: GDA 1994 MGA Zone 56

References:
 1. Base data supplied by NSW SS and Esri
 2. Aerial imagery supplied by MetroMap
 3. Cadastre (2015) supplied by PCC



Scale at A3 1:5,000







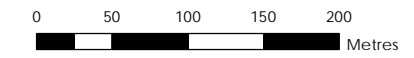
Climate Change Scenario
 CC3 FFA 1% AEP with RCP
 4.5 2090 Rainfall Increase
 with 2090 Sea Level Rise -
 Water Level Difference Plot

Parramatta River Flood Study
 Project Code: 59916074
 Drawn By: AS
 Map: 59916074-GS-083-
 1p_CC_RCP4.5_w2090SLR_WLD_5k.mxd
 Rev: 06
 Date: 2023-06-14

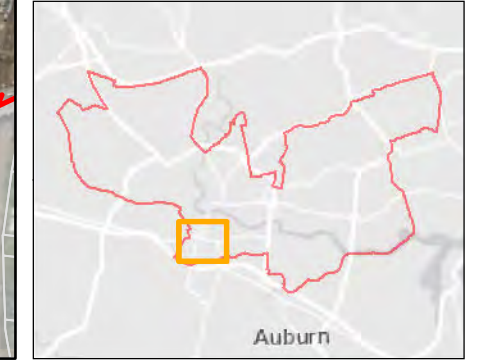
- Study Area
- Watercourse
- Cadastre
- Building Footprint
- Tuflow Model Extent
- RCP4.5 2090 FFA1% Water Level Difference (CC3 less Design FFA 1pc)
Was Wet Now Dry
- Was Dry Now Wet
- < -0.5
- 0.5 to -0.2
- 0.2 to -0.1
- 0.1 to -0.05
- 0.05 to -0.01
- 0.01 to 0.01
- 0.01 to 0.05
- 0.05 to 0.1
- 0.1 to 0.2
- 0.2 to 0.5
- > 0.5

Figure N7.28

- Notes:
1. Coordinate System: GDA 1994 MGA Zone 56
- References:
1. Base data supplied by NSW SS and Esri
 2. Aerial imagery supplied by MetroMap
 3. Cadastre (2015) supplied by PCC



Scale at A3 1:5,000



This document has been prepared based on information provided by others as cited in the data sources. Stantec has not verified the accuracy and/or completeness of this information and shall not be responsible for any errors or omissions which may be incorporated herein as a result. Stantec assumes no responsibility for data supplied in electronic format, and the recipient accepts full responsibility for verifying the accuracy and completeness of the data.



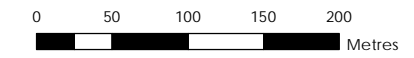
Climate Change Scenario
 CC3 FFA 1% AEP with RCP
 4.5 2090 Rainfall Increase
 with 2090 Sea Level Rise -
 Water Level Difference Plot

Parramatta River Flood Study
 Project Code: 59916074
 Drawn By: AS
 Map: 59916074-GS-083-
 1p_CC_RCP4.5_w2090SLR_WLD_5k.mxd
 Rev: 06
 Date: 2023-06-14

- Study Area
- Watercourse
- Cadastre
- Building Footprint
- Tuflow Model Extent
- RCP4.5 2090 FFA1% Water Level Difference (CC3 less Design FFA 1pc)**
- Was Wet Now Dry
- Was Dry Now Wet
- < -0.5
- 0.5 to -0.2
- 0.2 to -0.1
- 0.1 to -0.05
- 0.05 to -0.01
- 0.01 to 0.01
- 0.01 to 0.05
- 0.05 to 0.1
- 0.1 to 0.2
- 0.2 to 0.5
- > 0.5

Figure N7.29

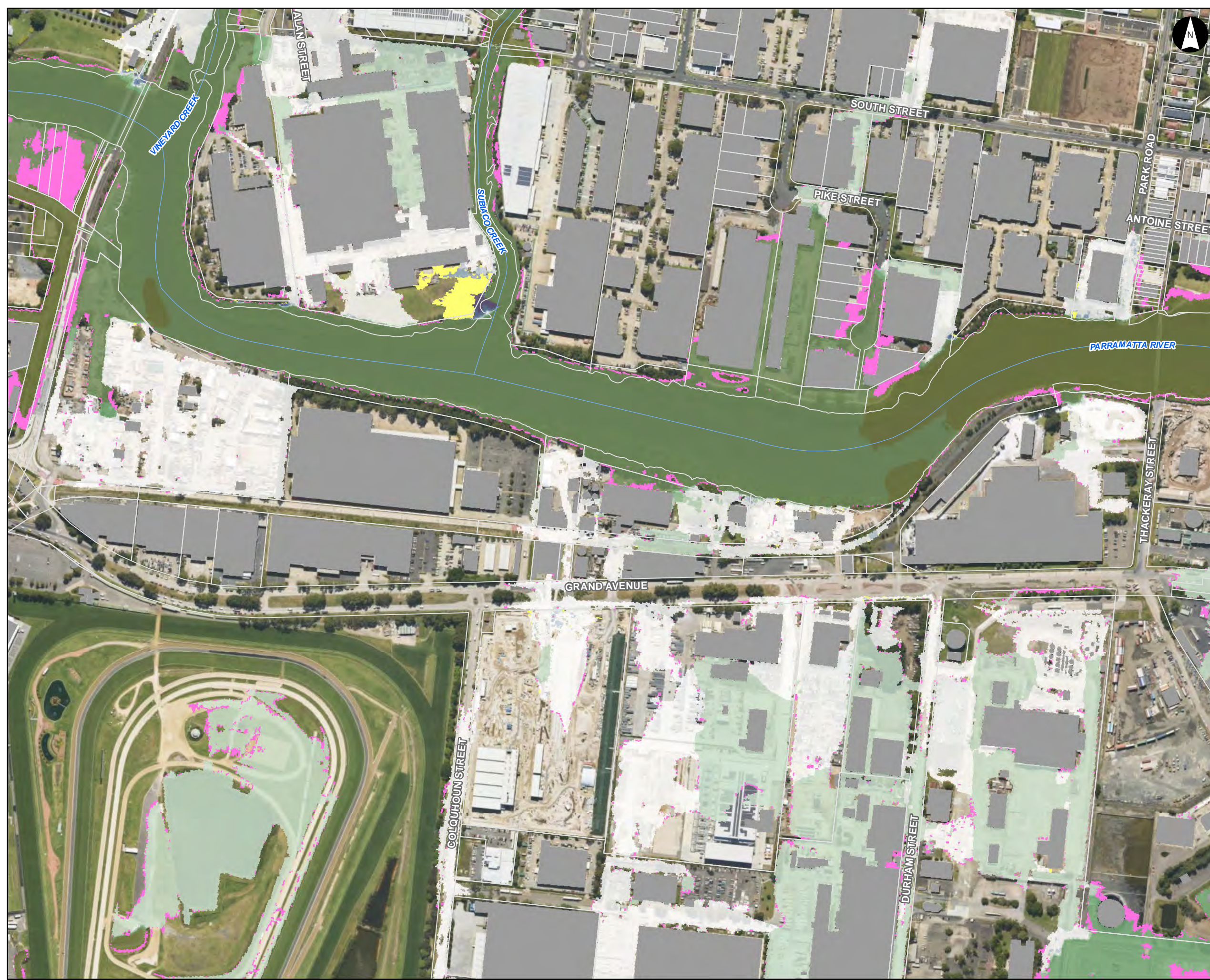
- Notes:
1. Coordinate System: GDA 1994 MGA Zone 56
- References:
1. Base data supplied by NSW SS and Esri
 2. Aerial imagery supplied by MetroMap
 3. Cadastre (2015) supplied by PCC



Scale at A3 1:5,000



This document has been prepared based on information provided by others as cited in the data sources. Stantec has not verified the accuracy and/or completeness of this information and shall not be responsible for any errors or omissions which may be incorporated herein as a result. Stantec assumes no responsibility for data supplied in electronic format, and the recipient accepts full responsibility for verifying the accuracy and completeness of the data.



Climate Change Scenario
 CC3 FFA 1% AEP with RCP
 4.5 2090 Rainfall Increase
 with 2090 Sea Level Rise -
 Water Level Difference Plot

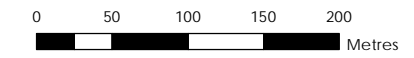
Parramatta River Flood Study
 Project Code: 59916074
 Drawn By: AS
 Map: 59916074-GS-083-
 1p_CC_RCP4.5_w2090SLR_WLD_5k.mxd
 Rev: 06
 Date: 2023-06-14

- Study Area
- Watercourse
- Cadastre
- Building Footprint
- Tuflow Model Extent
- RCP4.5 2090 FFA1% Water Level Difference (CC3 less Design FFA 1pc)
Was Wet Now Dry
- Was Dry Now Wet
- < -0.5
- 0.5 to -0.2
- 0.2 to -0.1
- 0.1 to -0.05
- 0.05 to -0.01
- 0.01 to 0.01
- 0.01 to 0.05
- 0.05 to 0.1
- 0.1 to 0.2
- 0.2 to 0.5
- > 0.5

Figure N7.30

Notes:
1. Coordinate System: GDA 1994 MGA Zone 56

- References:
1. Base data supplied by NSW SS and Esri
 2. Aerial imagery supplied by MetroMap
 3. Cadastre (2015) supplied by PCC



Scale at A3 1:5,000



This document has been prepared based on information provided by others as cited in the data sources. Stantec has not verified the accuracy and/or completeness of this information and shall not be responsible for any errors or omissions which may be incorporated herein as a result. Stantec assumes no responsibility for data supplied in electronic format, and the recipient accepts full responsibility for verifying the accuracy and completeness of the data.



Climate Change Scenario
 CC3 FFA 1% AEP with RCP
 4.5 2090 Rainfall Increase
 with 2090 Sea Level Rise -
 Water Level Difference Plot

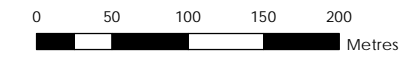
Parramatta River Flood Study
 Project Code: 59916074
 Drawn By: AS
 Map: 59916074-GS-083-
 1p_CC_RCP4.5_w2090SLR_WLD_5k.mxd
 Rev: 06
 Date: 2023-06-14

- Study Area
- Watercourse
- Cadastre
- Building Footprint
- Tuflow Model Extent
- RCP4.5 2090 FFA1% Water Level Difference (CC3 less Design FFA 1pc)
Was Wet Now Dry
- Was Dry Now Wet
- < -0.5
- 0.5 to -0.2
- 0.2 to -0.1
- 0.1 to -0.05
- 0.05 to -0.01
- 0.01 to 0.01
- 0.01 to 0.05
- 0.05 to 0.1
- 0.1 to 0.2
- 0.2 to 0.5
- > 0.5

Figure N7.31

Notes:
 1. Coordinate System: GDA 1994 MGA Zone 56

- References:
1. Base data supplied by NSW SS and Esri
 2. Aerial imagery supplied by MetroMap
 3. Cadastre (2015) supplied by PCC

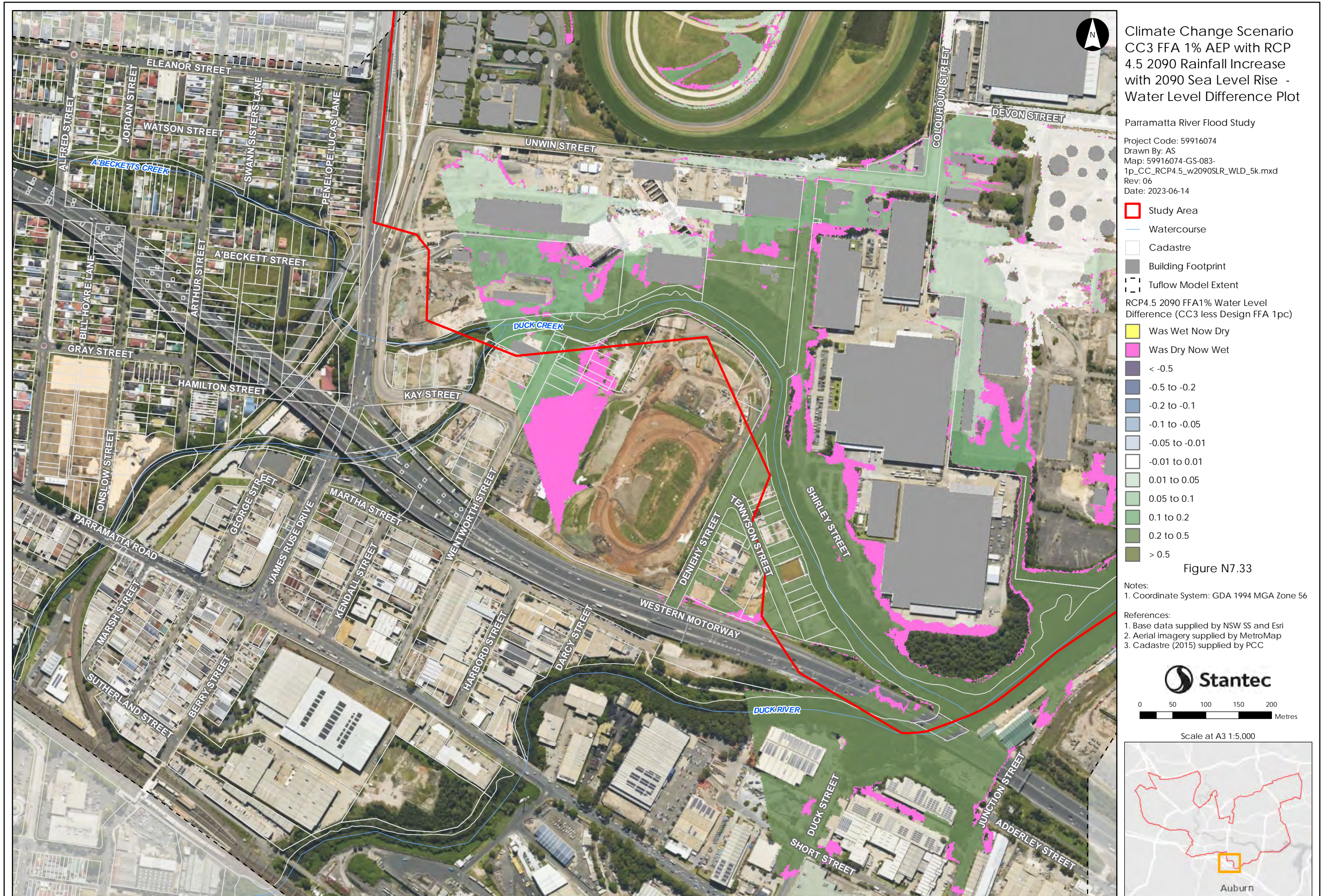


Scale at A3 1:5,000





This document has been prepared based on information provided by others as cited in the data sources. Stantec has not verified the accuracy and/or completeness of this information and shall not be responsible for any errors or omissions which may be incorporated herein as a result. Stantec assumes no responsibility for data supplied in electronic format, and the recipient accepts full responsibility for verifying the accuracy and completeness of the data.





Climate Change Scenario
 CC3 FFA 1% AEP with RCP
 4.5 2090 Rainfall Increase
 with 2090 Sea Level Rise -
 Water Level Difference Plot

Parramatta River Flood Study
 Project Code: 59916074
 Drawn By: AS
 Map: 59916074-GS-083-
 1p_CC_RCP4.5_w2090SLR_WLD_5k.mxd
 Rev: 06
 Date: 2023-06-14

Legend

- Study Area
- Watercourse
- Cadastre
- Building Footprint
- Tuflow Model Extent

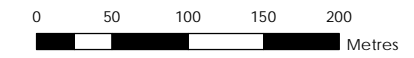
RCP4.5 2090 FFA1% Water Level Difference (CC3 less Design FFA 1pc)

- Was Wet Now Dry
- Was Dry Now Wet
- < -0.5
- 0.5 to -0.2
- 0.2 to -0.1
- 0.1 to -0.05
- 0.05 to -0.01
- 0.01 to 0.01
- 0.01 to 0.05
- 0.05 to 0.1
- 0.1 to 0.2
- 0.2 to 0.5
- > 0.5

Figure N7.34

Notes:
 1. Coordinate System: GDA 1994 MGA Zone 56

References:
 1. Base data supplied by NSW SS and Esri
 2. Aerial imagery supplied by MetroMap
 3. Cadastre (2015) supplied by PCC



Scale at A3 1:5,000





Climate Change Scenario
 CC4 FFA 1% AEP with RCP
 8.5 2090 Rainfall Increase
 with 2090 Sea Level Rise

Parramatta River Flood Study

Project Code: 59916074
 Drawn By: AS
 Map: 59916074-GS-078-
 1p_CC_RCP8.5_w2090SLR_5k.mxd
 Rev: 04
 Date: 2023-05-31

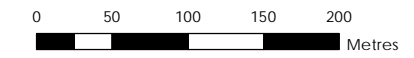
Legend

- Study Area
 - Watercourse
 - 1m Flood Level Contour (mAHD)
 - Cadastre
 - Building Footprint
 - Tuflow Model Extent
- Flood Depth (m)
- 0.00 - 0.15
 - 0.15 - 0.30
 - 0.30 - 0.50
 - 0.50 - 0.70
 - 0.70 - 1.00
 - 1.00 - 1.50
 - > 1.50

Figure N8.1

Notes:
 1. Coordinate System: GDA 1994 MGA Zone 56

- References:
1. Base data supplied by NSW SS and Esri
 2. Aerial imagery supplied by MetroMap
 3. Cadastre (2015) supplied by PCC



Scale at A3 1:5,000



This document has been prepared based on information provided by others as cited in the data sources. Stantec has not verified the accuracy and/or completeness of this information and shall not be responsible for any errors or omissions which may be incorporated herein as a result. Stantec assumes no responsibility for data supplied in electronic format, and the recipient accepts full responsibility for verifying the accuracy and completeness of the data.



Climate Change Scenario
CC4 FFA 1% AEP with RCP
8.5 2090 Rainfall Increase
with 2090 Sea Level Rise

Parramatta River Flood Study

Project Code: 59916074
Drawn By: AS
Map: 59916074-GS-078-
1p_CC_RCP8.5_w2090SLR_5k.mxd
Rev: 04
Date: 2023-05-31

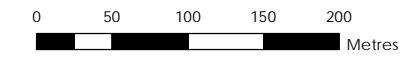
Legend

- Study Area
- Watercourse
- 1m Flood Level Contour (mAHD)
- Cadastre
- Building Footprint
- Tuflow Model Extent
- Flood Depth (m)**
 - 0.00 - 0.15
 - 0.15 - 0.30
 - 0.30 - 0.50
 - 0.50 - 0.70
 - 0.70 - 1.00
 - 1.00 - 1.50
 - > 1.50

Figure N8.2

Notes:
1. Coordinate System: GDA 1994 MGA Zone 56

- References:
1. Base data supplied by NSW SS and Esri
 2. Aerial imagery supplied by MetroMap
 3. Cadastre (2015) supplied by PCC



Scale at A3 1:5,000





Climate Change Scenario
CC4 FFA 1% AEP with RCP
8.5 2090 Rainfall Increase
with 2090 Sea Level Rise

Parramatta River Flood Study

Project Code: 59916074
Drawn By: AS
Map: 59916074-GS-078-
1p_CC_RCP8.5_w2090SLR_5k.mxd
Rev: 04
Date: 2023-05-31

Legend

- Study Area
- Watercourse
- 1m Flood Level Contour (mAHD)
- Cadastre
- Building Footprint
- Tuflow Model Extent

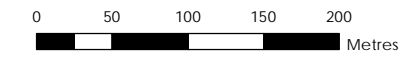
Flood Depth (m)

- 0.00 - 0.15
- 0.15 - 0.30
- 0.30 - 0.50
- 0.50 - 0.70
- 0.70 - 1.00
- 1.00 - 1.50
- > 1.50

Figure N8.3

Notes:
1. Coordinate System: GDA 1994 MGA Zone 56

- References:
1. Base data supplied by NSW SS and Esri
 2. Aerial imagery supplied by MetroMap
 3. Cadastre (2015) supplied by PCC



Scale at A3 1:5,000



This document has been prepared based on information provided by others as cited in the data sources. Stantec has not verified the accuracy and/or completeness of this information and shall not be responsible for any errors or omissions which may be incorporated herein as a result. Stantec assumes no responsibility for data supplied in electronic format, and the recipient accepts full responsibility for verifying the accuracy and completeness of the data.



Climate Change Scenario
 CC4 FFA 1% AEP with RCP
 8.5 2090 Rainfall Increase
 with 2090 Sea Level Rise

Parramatta River Flood Study

Project Code: 59916074
 Drawn By: AS
 Map: 59916074-GS-078-
 1p_CC_RCP8.5_w2090SLR_5k.mxd
 Rev: 04
 Date: 2023-05-31

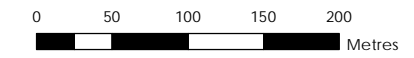
Legend

- Study Area
 - Watercourse
 - 1m Flood Level Contour (mAHD)
 - Cadastre
 - Building Footprint
 - Tuflow Model Extent
- Flood Depth (m)
- 0.00 - 0.15
 - 0.15 - 0.30
 - 0.30 - 0.50
 - 0.50 - 0.70
 - 0.70 - 1.00
 - 1.00 - 1.50
 - > 1.50

Figure N8.4

Notes:
 1. Coordinate System: GDA 1994 MGA Zone 56

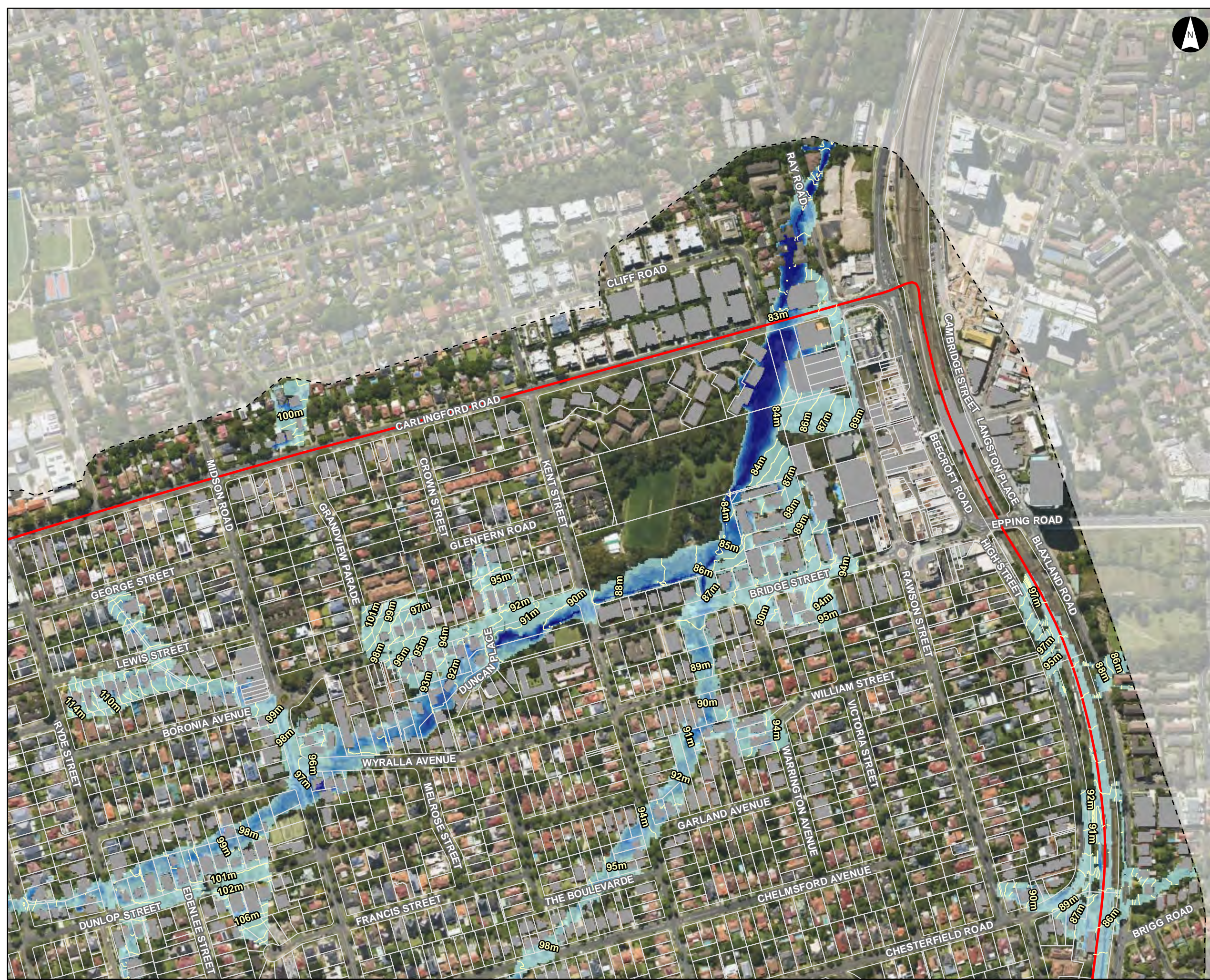
- References:
1. Base data supplied by NSW SS and Esri
 2. Aerial imagery supplied by MetroMap
 3. Cadastre (2015) supplied by PCC



Scale at A3 1:5,000



This document has been prepared based on information provided by others as cited in the data sources. Stantec has not verified the accuracy and/or completeness of this information and shall not be responsible for any errors or omissions which may be incorporated herein as a result. Stantec assumes no responsibility for data supplied in electronic format, and the recipient accepts full responsibility for verifying the accuracy and completeness of the data.



Climate Change Scenario
CC4 FFA 1% AEP with RCP
8.5 2090 Rainfall Increase
with 2090 Sea Level Rise

Parramatta River Flood Study

Project Code: 59916074
Drawn By: AS
Map: 59916074-GS-078-
1p_CC_RCP8.5_w2090SLR_5k.mxd
Rev: 04
Date: 2023-05-31

Legend














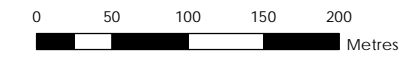
-  Study Area
 -  Watercourse
 -  1m Flood Level Contour (mAHD)
 -  Cadastre
 -  Building Footprint
 -  Tuflow Model Extent
- Flood Depth (m)
-  0.00 - 0.15
 -  0.15 - 0.30
 -  0.30 - 0.50
 -  0.50 - 0.70
 -  0.70 - 1.00
 -  1.00 - 1.50
 -  > 1.50

Figure N8.5

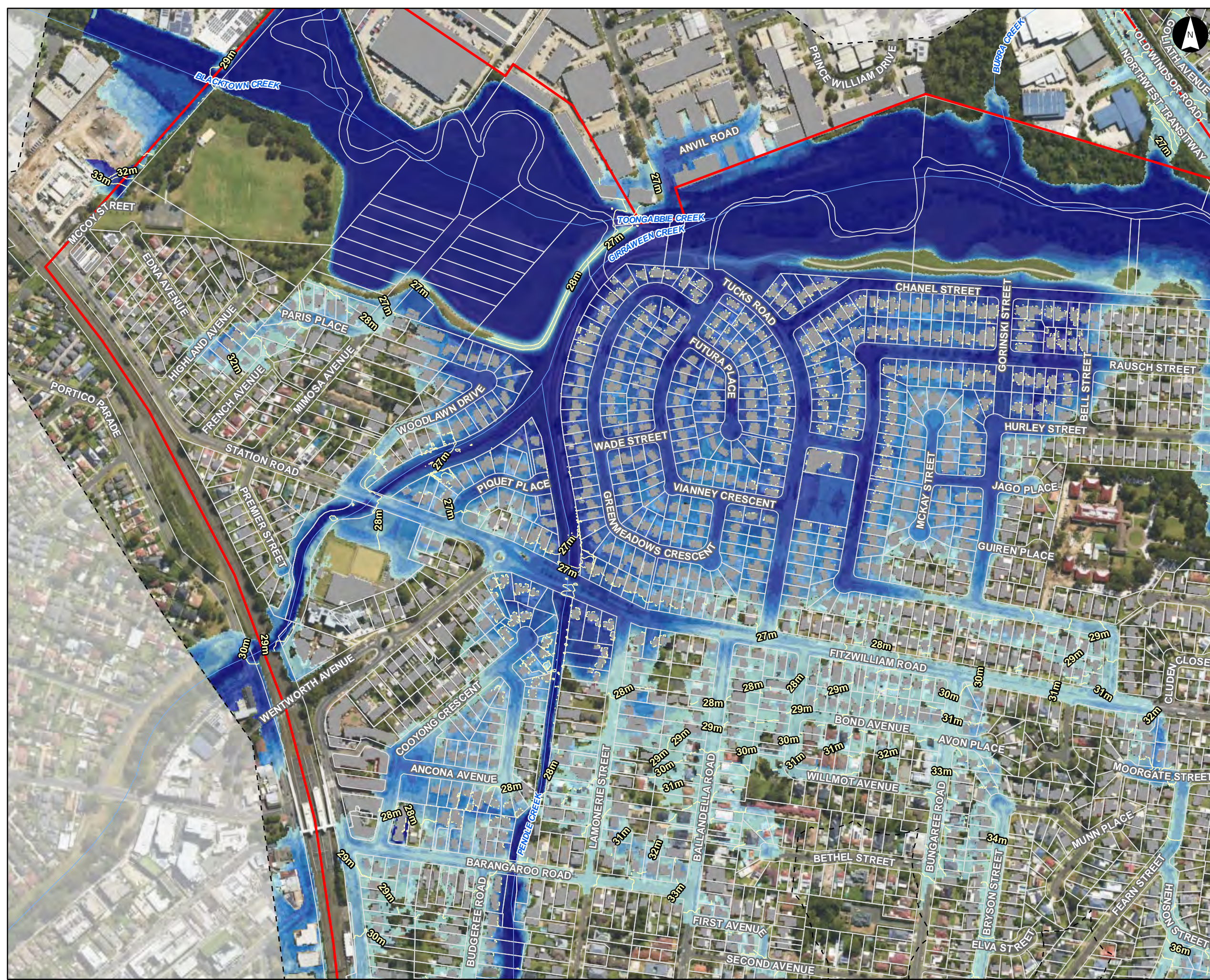
Notes:
1. Coordinate System: GDA 1994 MGA Zone 56

- References:
1. Base data supplied by NSW SS and Esri
 2. Aerial imagery supplied by MetroMap
 3. Cadastre (2015) supplied by PCC



Scale at A3 1:5,000





Climate Change Scenario
CC4 FFA 1% AEP with RCP
8.5 2090 Rainfall Increase
with 2090 Sea Level Rise

Parramatta River Flood Study

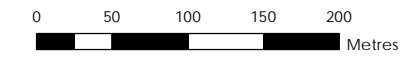
Project Code: 59916074
Drawn By: AS
Map: 59916074-GS-078-
1p_CC_RCP8.5_w2090SLR_5k.mxd
Rev: 04
Date: 2023-05-31

Legend

- Study Area
- Watercourse
- 1m Flood Level Contour (mAHD)
- Cadastre
- Building Footprint
- Tuflow Model Extent
- Flood Depth (m)**
 - 0.00 - 0.15
 - 0.15 - 0.30
 - 0.30 - 0.50
 - 0.50 - 0.70
 - 0.70 - 1.00
 - 1.00 - 1.50
 - > 1.50

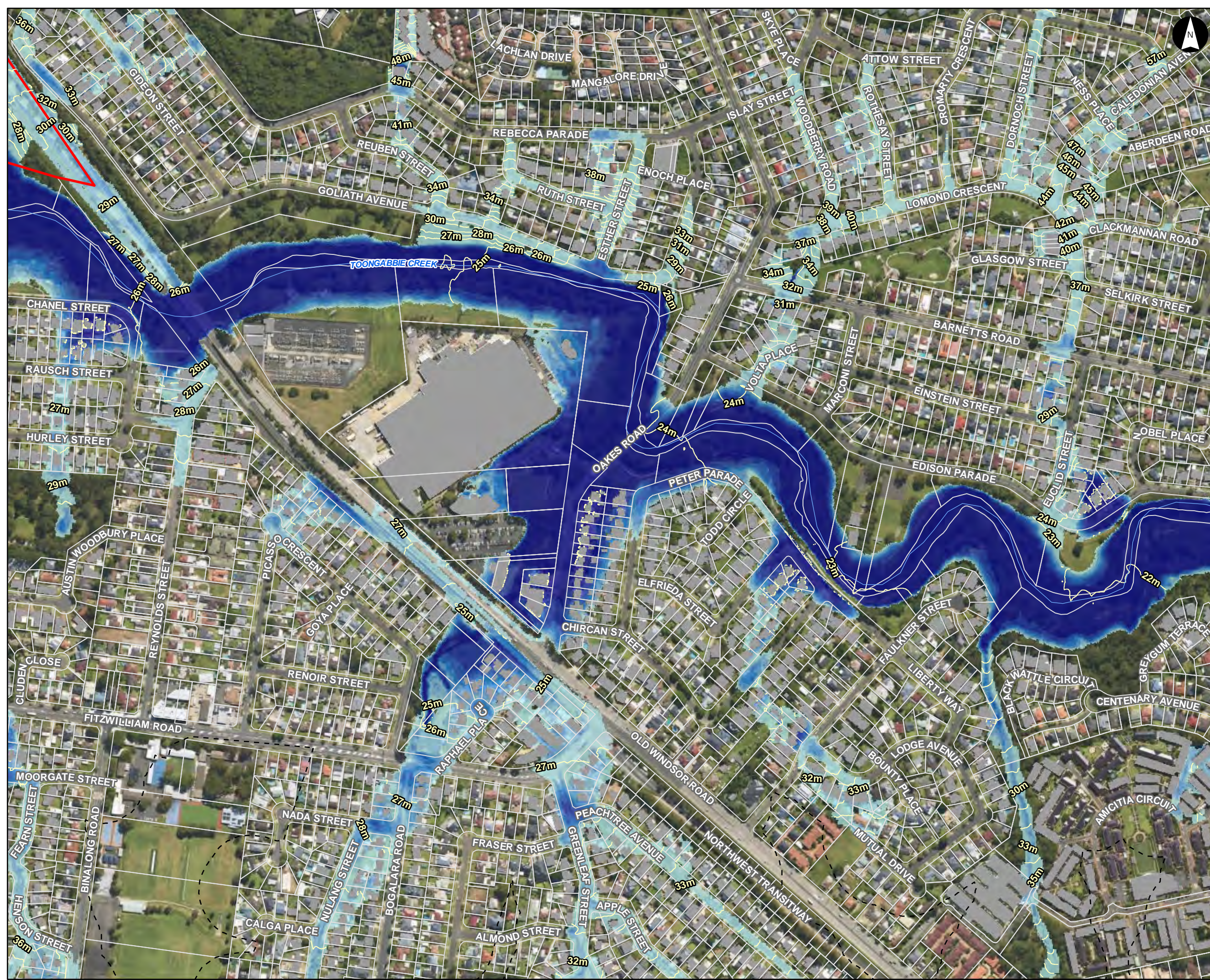
Figure N8.6

- Notes:
- Coordinate System: GDA 1994 MGA Zone 56
- References:
- Base data supplied by NSW SS and Esri
 - Aerial imagery supplied by MetroMap
 - Cadastre (2015) supplied by PCC



Scale at A3 1:5,000





Climate Change Scenario
CC4 FFA 1% AEP with RCP
8.5 2090 Rainfall Increase
with 2090 Sea Level Rise

Parramatta River Flood Study

Project Code: 59916074
Drawn By: AS
Map: 59916074-GS-078-
1p_CC_RCP8.5_w2090SLR_5k.mxd
Rev: 04
Date: 2023-05-31

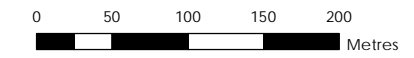
Legend

- Study Area
- Watercourse
- 1m Flood Level Contour (mAHD)
- Cadastre
- Building Footprint
- Tufflow Model Extent
- Flood Depth (m)**
 - 0.00 - 0.15
 - 0.15 - 0.30
 - 0.30 - 0.50
 - 0.50 - 0.70
 - 0.70 - 1.00
 - 1.00 - 1.50
 - > 1.50

Figure N8.7

Notes:
1. Coordinate System: GDA 1994 MGA Zone 56

- References:
1. Base data supplied by NSW SS and Esri
 2. Aerial imagery supplied by MetroMap
 3. Cadastre (2015) supplied by PCC

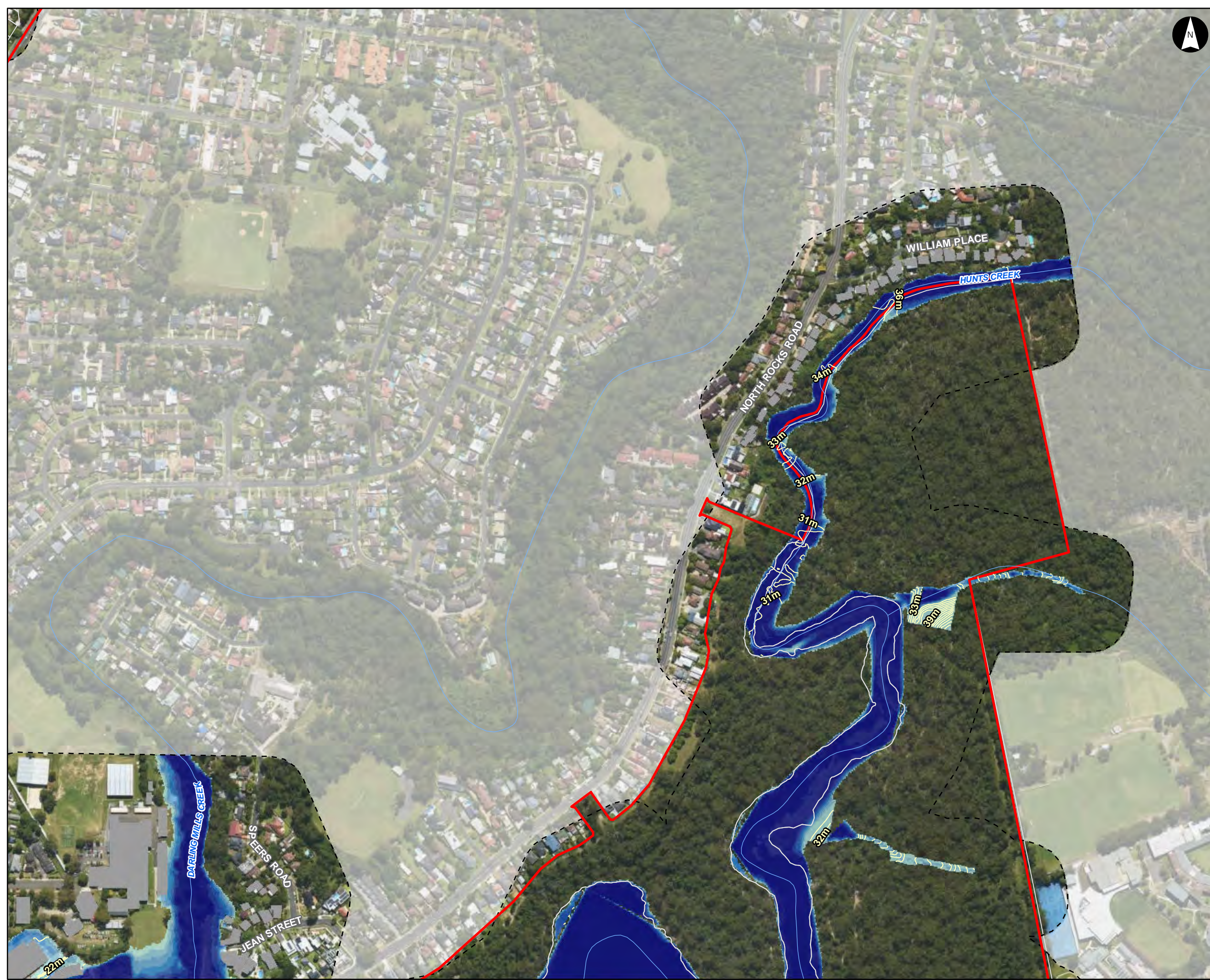


Scale at A3 1:5,000





This document has been prepared based on information provided by others as cited in the data sources. Stantec has not verified the accuracy and/or completeness of this information and shall not be responsible for any errors or omissions which may be incorporated herein as a result. Stantec assumes no responsibility for data supplied in electronic format, and the recipient accepts full responsibility for verifying the accuracy and completeness of the data.



Climate Change Scenario
CC4 FFA 1% AEP with RCP
8.5 2090 Rainfall Increase
with 2090 Sea Level Rise

Parramatta River Flood Study

Project Code: 59916074
Drawn By: AS
Map: 59916074-GS-078-
1p_CC_RCP8.5_w2090SLR_5k.mxd
Rev: 04
Date: 2023-05-31

Legend

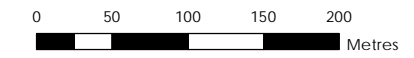
- Study Area
- Watercourse
- 1m Flood Level Contour (mAHD)
- Cadastre
- Building Footprint
- Tuflow Model Extent

- Flood Depth (m)
- 0.00 - 0.15
- 0.15 - 0.30
- 0.30 - 0.50
- 0.50 - 0.70
- 0.70 - 1.00
- 1.00 - 1.50
- > 1.50

Figure N8.9

Notes:
1. Coordinate System: GDA 1994 MGA Zone 56

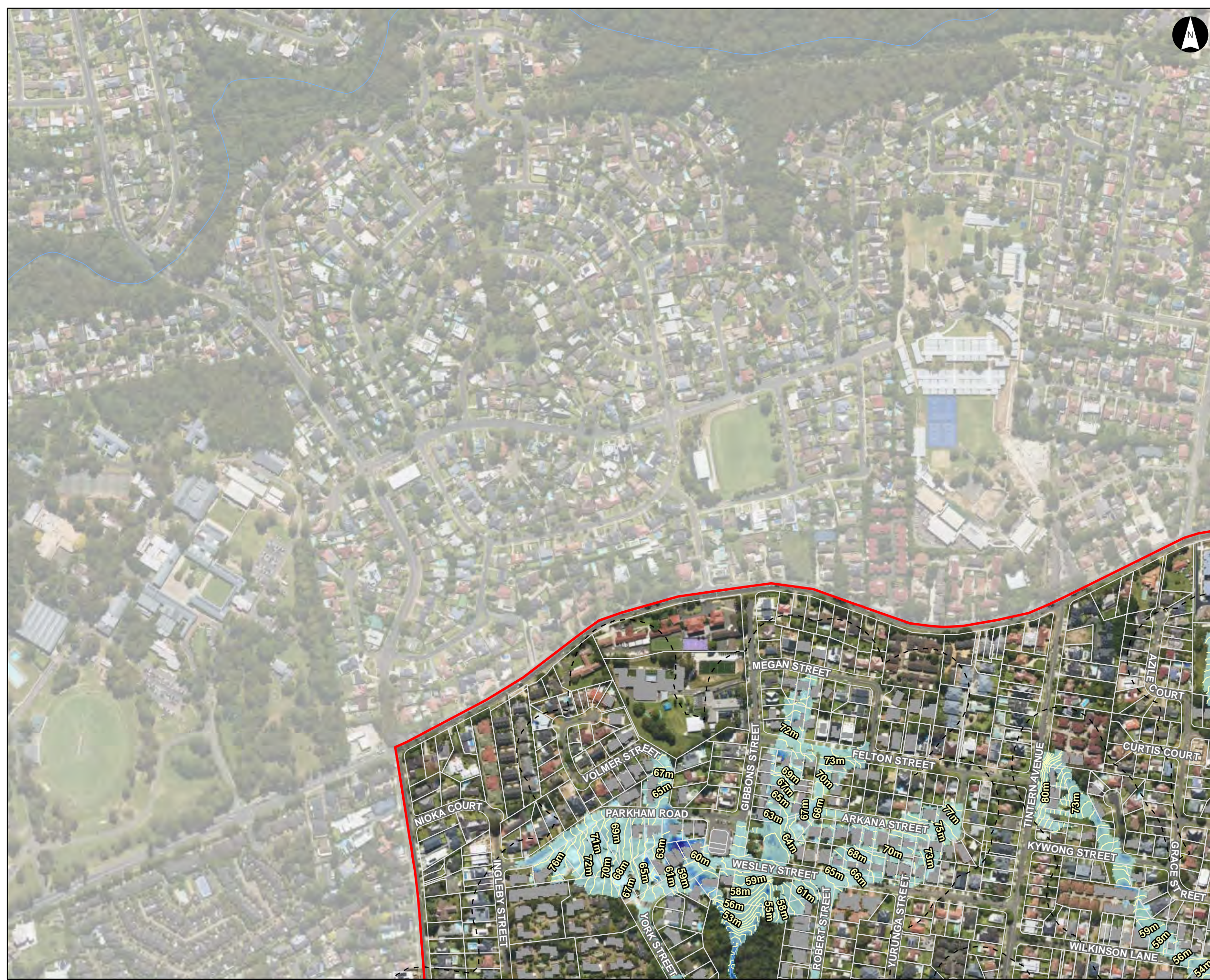
- References:
1. Base data supplied by NSW SS and Esri
 2. Aerial imagery supplied by MetroMap
 3. Cadastre (2015) supplied by PCC



Scale at A3 1:5,000



This document has been prepared based on information provided by others as cited in the data sources. Stantec has not verified the accuracy and/or completeness of this information and shall not be responsible for any errors or omissions which may be incorporated herein as a result. Stantec assumes no responsibility for data supplied in electronic format, and the recipient accepts full responsibility for verifying the accuracy and completeness of the data.



Climate Change Scenario
CC4 FFA 1% AEP with RCP
8.5 2090 Rainfall Increase
with 2090 Sea Level Rise

Parramatta River Flood Study

Project Code: 59916074
Drawn By: AS
Map: 59916074-GS-078-
1p_CC_RCP8.5_w2090SLR_5k.mxd
Rev: 04
Date: 2023-05-31

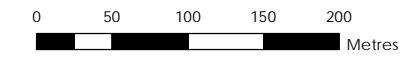
Legend

- Study Area
- Watercourse
- 1m Flood Level Contour (mAHD)
- Cadastre
- Building Footprint
- Tuflow Model Extent
- Flood Depth (m)**
 - 0.00 - 0.15
 - 0.15 - 0.30
 - 0.30 - 0.50
 - 0.50 - 0.70
 - 0.70 - 1.00
 - 1.00 - 1.50
 - > 1.50

Figure N8.10

Notes:
1. Coordinate System: GDA 1994 MGA Zone 56

- References:
1. Base data supplied by NSW SS and Esri
 2. Aerial imagery supplied by MetroMap
 3. Cadastre (2015) supplied by PCC



Scale at A3 1:5,000





Climate Change Scenario
CC4 FFA 1% AEP with RCP
8.5 2090 Rainfall Increase
with 2090 Sea Level Rise

Parramatta River Flood Study

Project Code: 59916074
Drawn By: AS
Map: 59916074-GS-078-
1p_CC_RCP8.5_w2090SLR_5k.mxd
Rev: 04
Date: 2023-05-31

Legend

- Study Area
- Watercourse
- 1m Flood Level Contour (mAHD)
- Cadastre
- Building Footprint
- Tuflow Model Extent

Flood Depth (m)

- 0.00 - 0.15
- 0.15 - 0.30
- 0.30 - 0.50
- 0.50 - 0.70
- 0.70 - 1.00
- 1.00 - 1.50
- > 1.50

Figure N8.11

Notes:
1. Coordinate System: GDA 1994 MGA Zone 56

References:
1. Base data supplied by NSW SS and Esri
2. Aerial imagery supplied by MetroMap
3. Cadastre (2015) supplied by PCC

Scale at A3 1:5,000



This document has been prepared based on information provided by others as cited in the data sources. Stantec has not verified the accuracy and/or completeness of this information and shall not be responsible for any errors or omissions which may be incorporated herein as a result. Stantec assumes no responsibility for data supplied in electronic format, and the recipient accepts full responsibility for verifying the accuracy and completeness of the data.



Climate Change Scenario
CC4 FFA 1% AEP with RCP
8.5 2090 Rainfall Increase
with 2090 Sea Level Rise

Parramatta River Flood Study

Project Code: 59916074
Drawn By: AS
Map: 59916074-GS-078-
1p_CC_RCP8.5_w2090SLR_5k.mxd
Rev: 04
Date: 2023-05-31

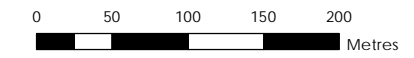
Legend

- Study Area
- Watercourse
- 1m Flood Level Contour (mAHD)
- Cadastre
- Building Footprint
- Tufflow Model Extent
- Flood Depth (m)**
 - 0.00 - 0.15
 - 0.15 - 0.30
 - 0.30 - 0.50
 - 0.50 - 0.70
 - 0.70 - 1.00
 - 1.00 - 1.50
 - > 1.50

Figure N8.12

Notes:
1. Coordinate System: GDA 1994 MGA Zone 56

- References:
1. Base data supplied by NSW SS and Esri
 2. Aerial imagery supplied by MetroMap
 3. Cadastre (2015) supplied by PCC



Scale at A3 1:5,000





Climate Change Scenario
 CC4 FFA 1% AEP with RCP
 8.5 2090 Rainfall Increase
 with 2090 Sea Level Rise

Parramatta River Flood Study

Project Code: 59916074
 Drawn By: AS
 Map: 59916074-GS-078-
 1p_CC_RCP8.5_w2090SLR_5k.mxd
 Rev: 04
 Date: 2023-05-31

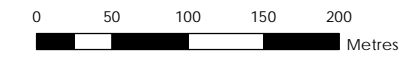
Legend

- Study Area
 - Watercourse
 - 1m Flood Level Contour (mAHD)
 - Cadastre
 - Building Footprint
 - Tuflow Model Extent
- Flood Depth (m)
- 0.00 - 0.15
 - 0.15 - 0.30
 - 0.30 - 0.50
 - 0.50 - 0.70
 - 0.70 - 1.00
 - 1.00 - 1.50
 - > 1.50

Figure N8.13

Notes:
 1. Coordinate System: GDA 1994 MGA Zone 56

- References:
1. Base data supplied by NSW SS and Esri
 2. Aerial imagery supplied by MetroMap
 3. Cadastre (2015) supplied by PCC



Scale at A3 1:5,000



This document has been prepared based on information provided by others as cited in the data sources. Stantec has not verified the accuracy and/or completeness of this information and shall not be responsible for any errors or omissions which may be incorporated herein as a result. Stantec assumes no responsibility for data supplied in electronic format, and the recipient accepts full responsibility for verifying the accuracy and completeness of the data.



Climate Change Scenario
CC4 FFA 1% AEP with RCP
8.5 2090 Rainfall Increase
with 2090 Sea Level Rise

Parramatta River Flood Study

Project Code: 59916074
Drawn By: AS
Map: 59916074-GS-078-
1p_CC_RCP8.5_w2090SLR_5k.mxd
Rev: 04
Date: 2023-05-31

Legend



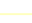






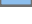



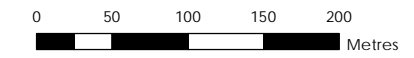
-  Study Area
-  Watercourse
-  1m Flood Level Contour (mAHD)
-  Cadastre
-  Building Footprint
-  Tufflow Model Extent
- Flood Depth (m)**
-  0.00 - 0.15
-  0.15 - 0.30
-  0.30 - 0.50
-  0.50 - 0.70
-  0.70 - 1.00
-  1.00 - 1.50
-  > 1.50

Figure N8.15

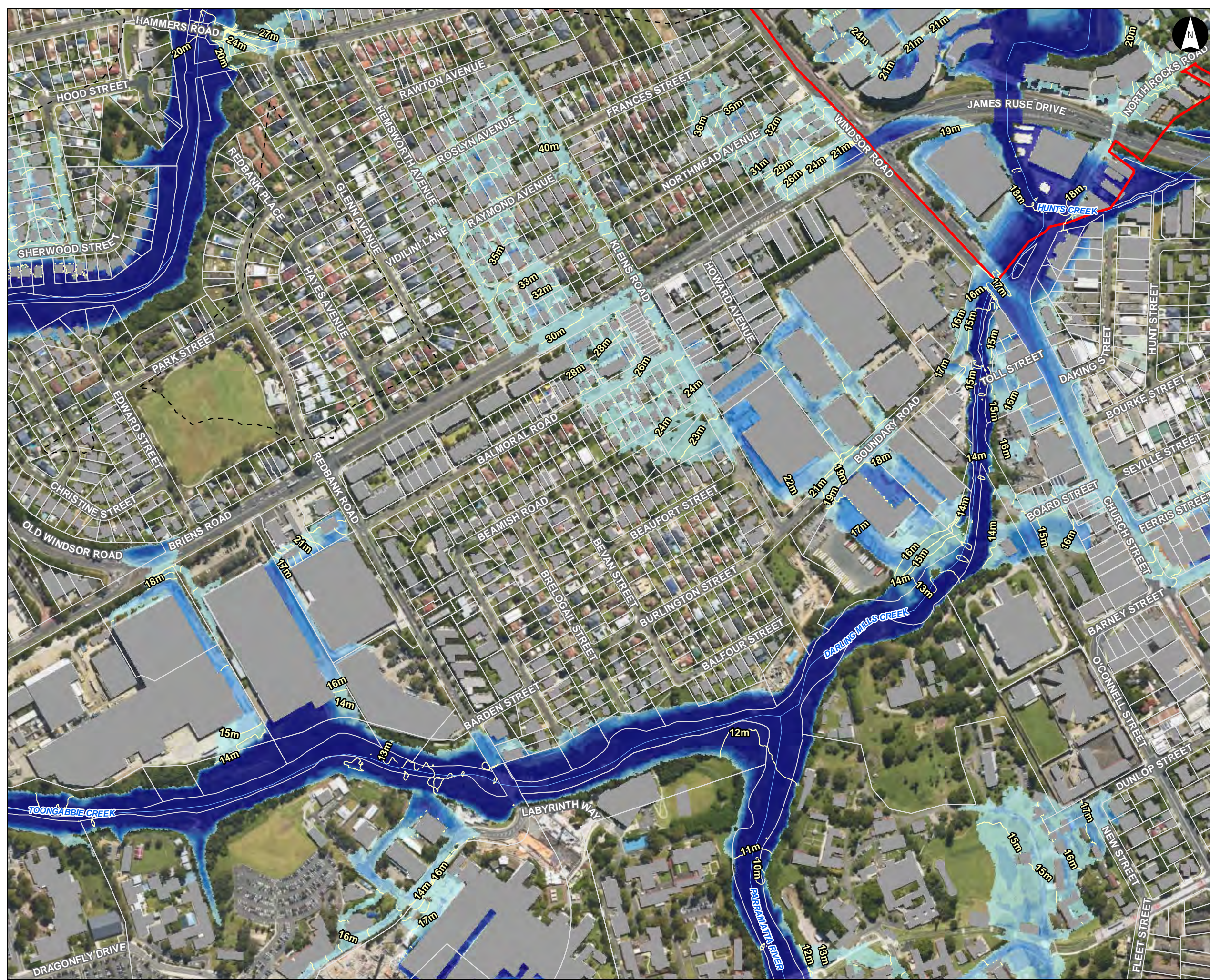
Notes:
1. Coordinate System: GDA 1994 MGA Zone 56

References:
1. Base data supplied by NSW SS and Esri
2. Aerial imagery supplied by MetroMap
3. Cadastre (2015) supplied by PCC



Scale at A3 1:5,000





Climate Change Scenario
CC4 FFA 1% AEP with RCP
8.5 2090 Rainfall Increase
with 2090 Sea Level Rise

Parramatta River Flood Study

Project Code: 59916074
Drawn By: AS
Map: 59916074-GS-078-
1p_CC_RCP8.5_w2090SLR_5k.mxd
Rev: 04
Date: 2023-05-31

Legend

- Study Area
- Watercourse
- 1m Flood Level Contour (mAHD)
- Cadastre
- Building Footprint
- Tuflow Model Extent

Flood Depth (m)

- 0.00 - 0.15
- 0.15 - 0.30
- 0.30 - 0.50
- 0.50 - 0.70
- 0.70 - 1.00
- 1.00 - 1.50
- > 1.50

Figure N8.16

Notes:

- Coordinate System: GDA 1994 MGA Zone 56

References:

- Base data supplied by NSW SS and Esri
- Aerial imagery supplied by MetroMap
- Cadastre (2015) supplied by PCC

0 50 100 150 200 Metres

Scale at A3 1:5,000



This document has been prepared based on information provided by others as cited in the data sources. Stantec has not verified the accuracy and/or completeness of this information and shall not be responsible for any errors or omissions which may be incorporated herein as a result. Stantec assumes no responsibility for data supplied in electronic format, and the recipient accepts full responsibility for verifying the accuracy and completeness of the data.