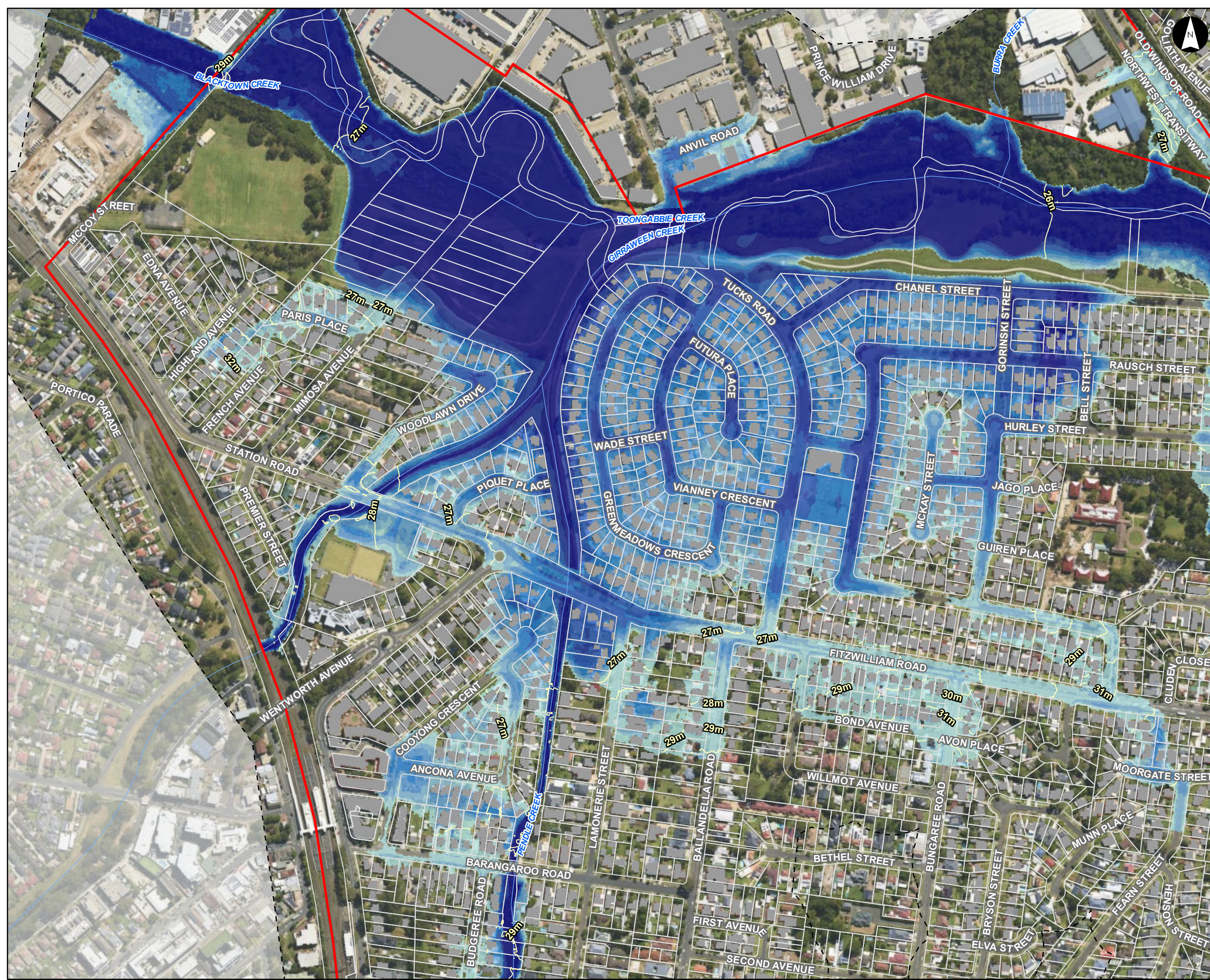




This document has been prepared based on information provided by others as cited in the data sources. Stantec has not verified the accuracy and/or completeness of this information and shall not be responsible for any errors or omissions which may be incorporated herein as a result. Stantec assumes no responsibility for data supplied in electronic format, and the recipient accepts full responsibility for verifying the accuracy and completeness of the data.



Sensitivity Analysis SS7 Basin  
Removal FFA 1% AEP Peak  
Flood Level Contours and  
Depths

Parramatta River Flood Study

Project Code: 59916074  
Drawn By: AS  
Map: 59916074-GS-085-  
1p\_BasinFailure\_FLCD.mxd  
Rev: 02  
Date: 2023-06-12

**Legend**

- Study Area
- Watercourse
- 1m Flood Level Contour (mAHD)
- Cadastre
- Building Footprint
- Tuflow Model Extent

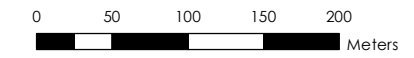
**Basin Removal Flood Depth (m)**

- 0.00 - 0.15
- 0.15 - 0.30
- 0.30 - 0.50
- 0.50 - 0.70
- 0.70 - 1.00
- 1.00 - 1.50
- > 1.50

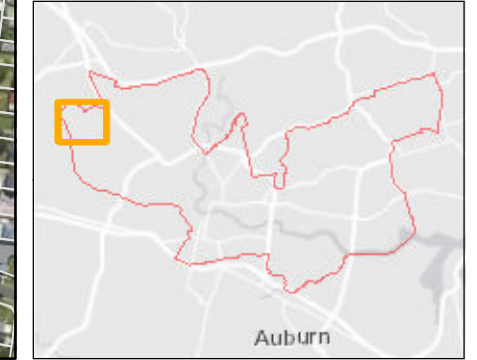
**Figure M14.6**

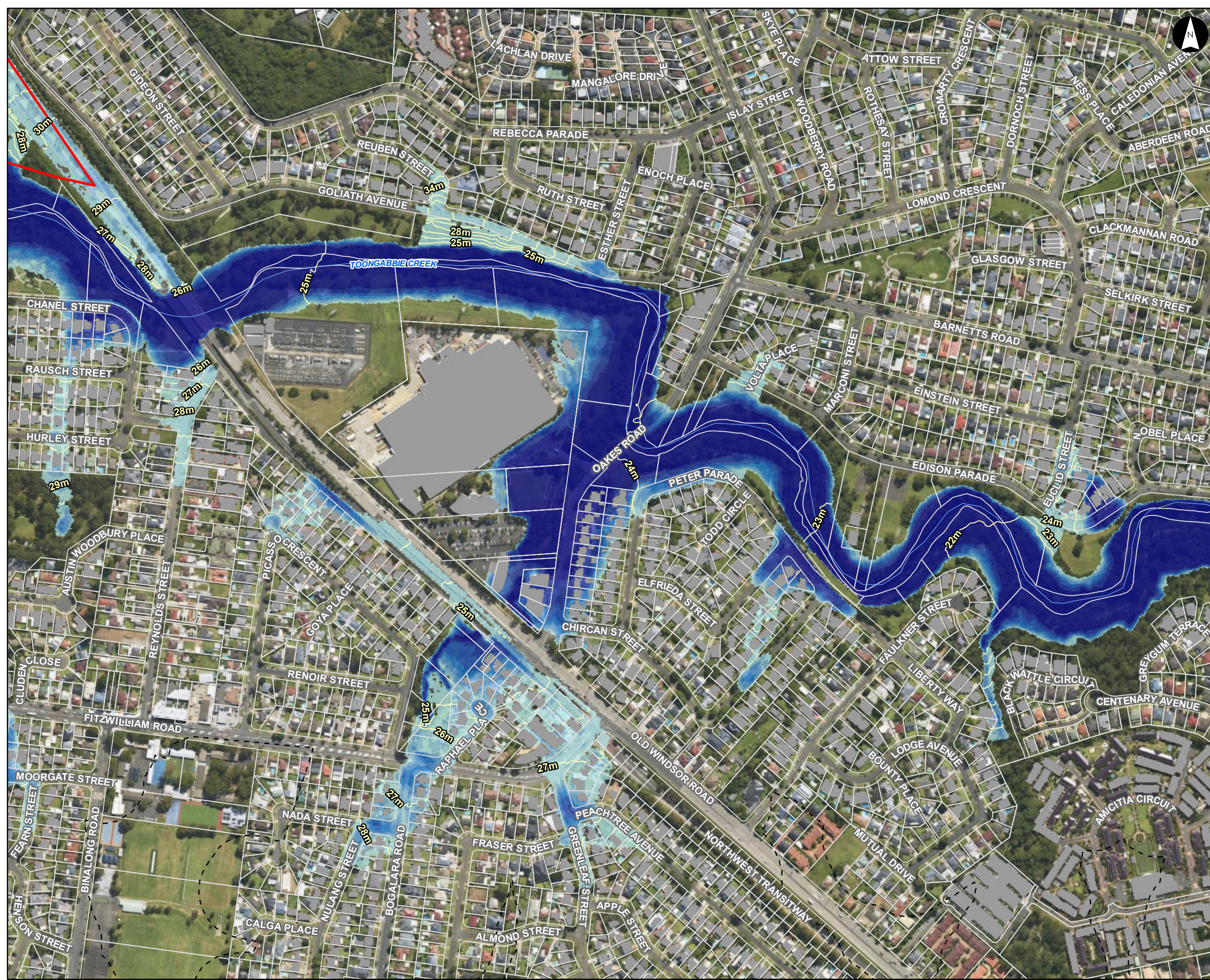
Notes:  
1. Coordinate System: GDA 1994 MGA Zone 56

- References:
1. Base data supplied by NSW SS and Esri
  2. Aerial imagery supplied by MetroMap
  3. Cadastre (2015) supplied by PCC



Scale at A3 1:5,000





Sensitivity Analysis SS7 Basin  
Removal FFA 1% AEP Peak  
Flood Level Contours and  
Depths

Parramatta River Flood Study

Project Code: 59916074  
Drawn By: AS  
Map: 59916074-GS-085-  
1p\_BasinFailure\_FLCD.mxd  
Rev: 02  
Date: 2023-06-12

Legend

- Study Area
- Watercourse
- 1m Flood Level Contour (mAHD)
- Cadastre
- Building Footprint
- Tufflow Model Extent

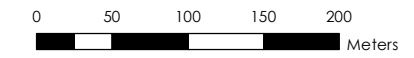
Basin Removal Flood Depth (m)

- 0.00 - 0.15
- 0.15 - 0.30
- 0.30 - 0.50
- 0.50 - 0.70
- 0.70 - 1.00
- 1.00 - 1.50
- > 1.50

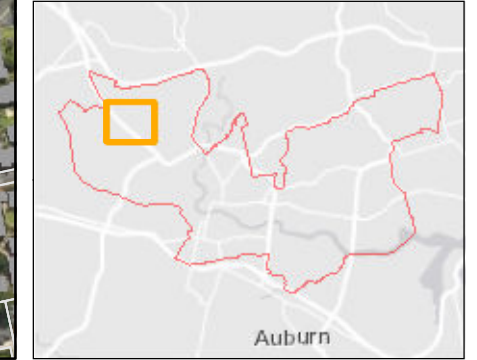
Figure M14.7

Notes:  
1. Coordinate System: GDA 1994 MGA Zone 56

- References:
1. Base data supplied by NSW SS and Esri
  2. Aerial imagery supplied by MetroMap
  3. Cadastre (2015) supplied by PCC

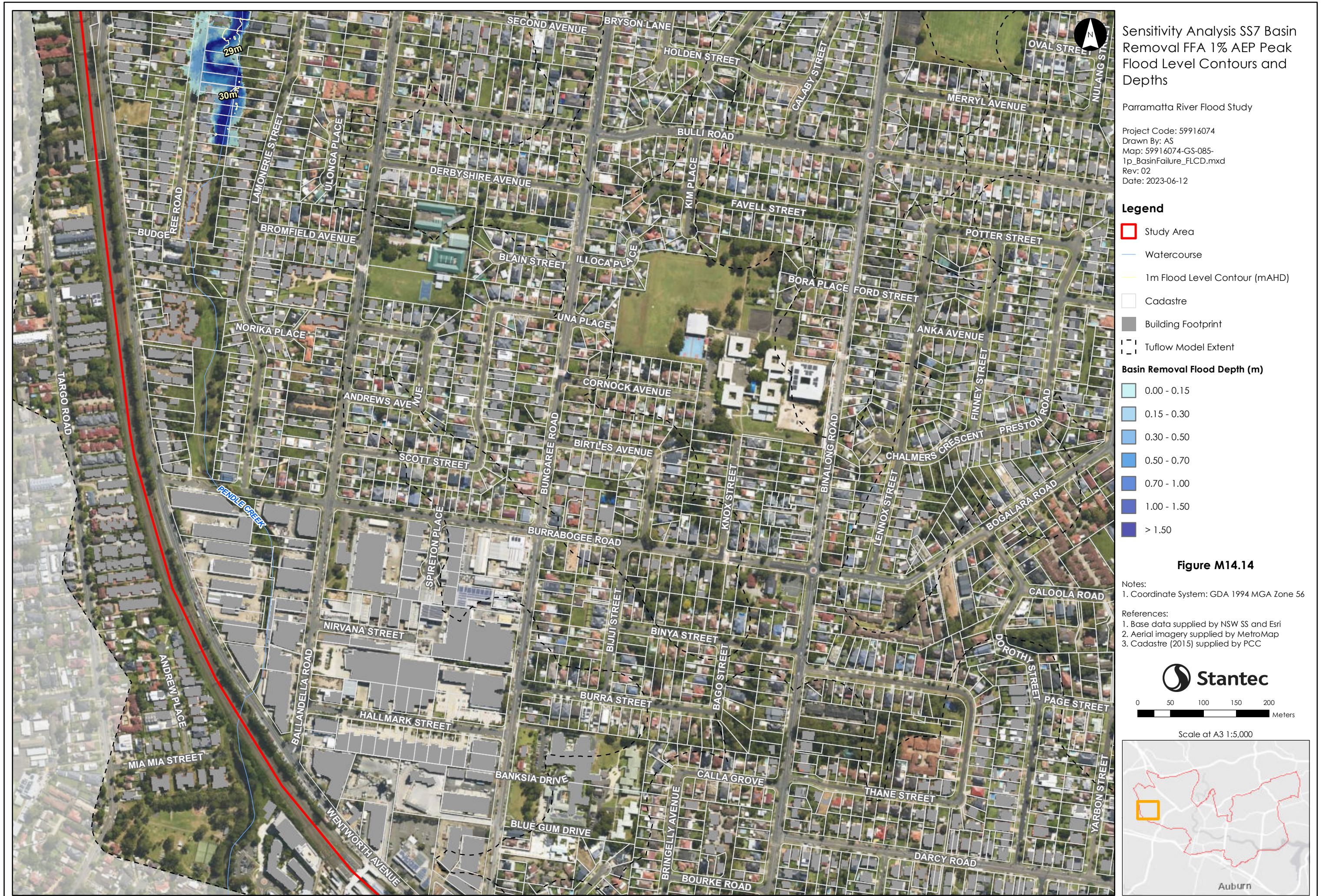


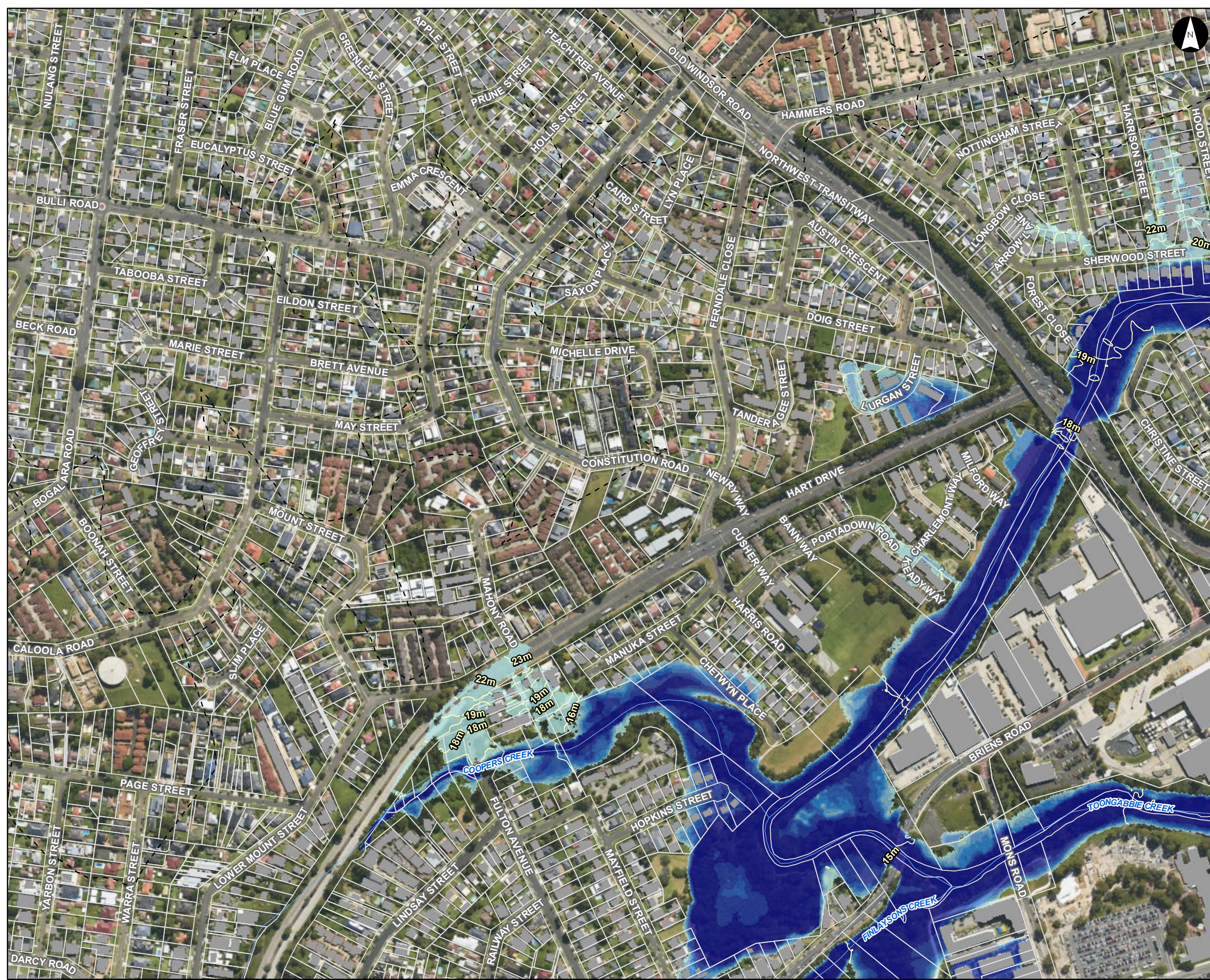
Scale at A3 1:5,000





This document has been prepared based on information provided by others as cited in the data sources. Stantec has not verified the accuracy and/or completeness of this information and shall not be responsible for any errors or omissions which may be incorporated herein as a result. Stantec assumes no responsibility for data supplied in electronic format, and the recipient accepts full responsibility for verifying the accuracy and completeness of the data.





Sensitivity Analysis SS7 Basin  
Removal FFA 1% AEP Peak  
Flood Level Contours and  
Depths

Parramatta River Flood Study

Project Code: 59916074  
Drawn By: AS  
Map: 59916074-GS-085-  
1p\_BasinFailure\_FLCD.mxd  
Rev: 02  
Date: 2023-06-12

**Legend**

- Study Area
- Watercourse
- 1m Flood Level Contour (mAHD)
- Cadastre
- Building Footprint
- Tufflow Model Extent

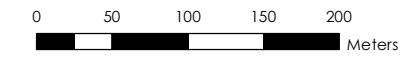
**Basin Removal Flood Depth (m)**

- 0.00 - 0.15
- 0.15 - 0.30
- 0.30 - 0.50
- 0.50 - 0.70
- 0.70 - 1.00
- 1.00 - 1.50
- > 1.50

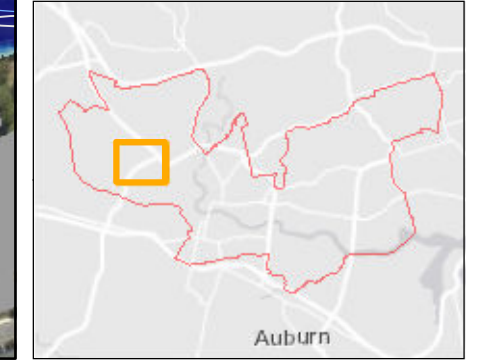
**Figure M14.15**

Notes:  
1. Coordinate System: GDA 1994 MGA Zone 56

References:  
1. Base data supplied by NSW SS and Esri  
2. Aerial imagery supplied by MetroMap  
3. Cadastre (2015) supplied by PCC



Scale at A3 1:5,000



This document has been prepared based on information provided by others as cited in the data sources. Stantec has not verified the accuracy and/or completeness of this information and shall not be responsible for any errors or omissions which may be incorporated herein as a result. Stantec assumes no responsibility for data supplied in electronic format, and the recipient accepts full responsibility for verifying the accuracy and completeness of the data.



**Sensitivity Analysis SS7 Basin  
Removal FFA 1% AEP Peak  
Flood Level Contours and  
Depths**

Parramatta River Flood Study

Project Code: 59916074  
 Drawn By: AS  
 Map: 59916074-GS-085-  
 1p\_BasinFailure\_FLCD.mxd  
 Rev: 02  
 Date: 2023-06-12

**Legend**

- Study Area
- Watercourse
- 1m Flood Level Contour (mAHD)
- Cadastre
- Building Footprint
- Tufflow Model Extent

**Basin Removal Flood Depth (m)**

- 0.00 - 0.15
- 0.15 - 0.30
- 0.30 - 0.50
- 0.50 - 0.70
- 0.70 - 1.00
- 1.00 - 1.50
- > 1.50

**Figure M14.16**

Notes:

1. Coordinate System: GDA 1994 MGA Zone 56

References:

1. Base data supplied by NSW SS and Esri
2. Aerial imagery supplied by MetroMap
3. Cadastre (2015) supplied by PCC

**Stantec**

0 50 100 150 200  
Meters

Scale at A3 1:5,000



This document has been prepared based on information provided by others as cited in the data sources. Stantec has not verified the accuracy and/or completeness of this information and shall not be responsible for any errors or omissions which may be incorporated herein as a result. Stantec assumes no responsibility for data supplied in electronic format, and the recipient accepts full responsibility for verifying the accuracy and completeness of the data.



Sensitivity Analysis SS7 Basin  
Removal FFA 1% AEP Peak  
Flood Level Contours and  
Depths

Parramatta River Flood Study

Project Code: 59916074  
Drawn By: AS  
Map: 59916074-GS-085-  
1p\_BasinFailure\_FLCD.mxd  
Rev: 02  
Date: 2023-06-12

**Legend**

- Study Area
- Watercourse
- 1m Flood Level Contour (mAHD)
- Cadastre
- Building Footprint
- Tuflow Model Extent

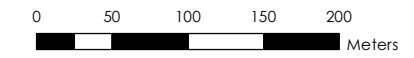
**Basin Removal Flood Depth (m)**

- 0.00 - 0.15
- 0.15 - 0.30
- 0.30 - 0.50
- 0.50 - 0.70
- 0.70 - 1.00
- 1.00 - 1.50
- > 1.50

**Figure M14.22**

Notes:  
1. Coordinate System: GDA 1994 MGA Zone 56

References:  
1. Base data supplied by NSW SS and Esri  
2. Aerial imagery supplied by MetroMap  
3. Cadastre (2015) supplied by PCC

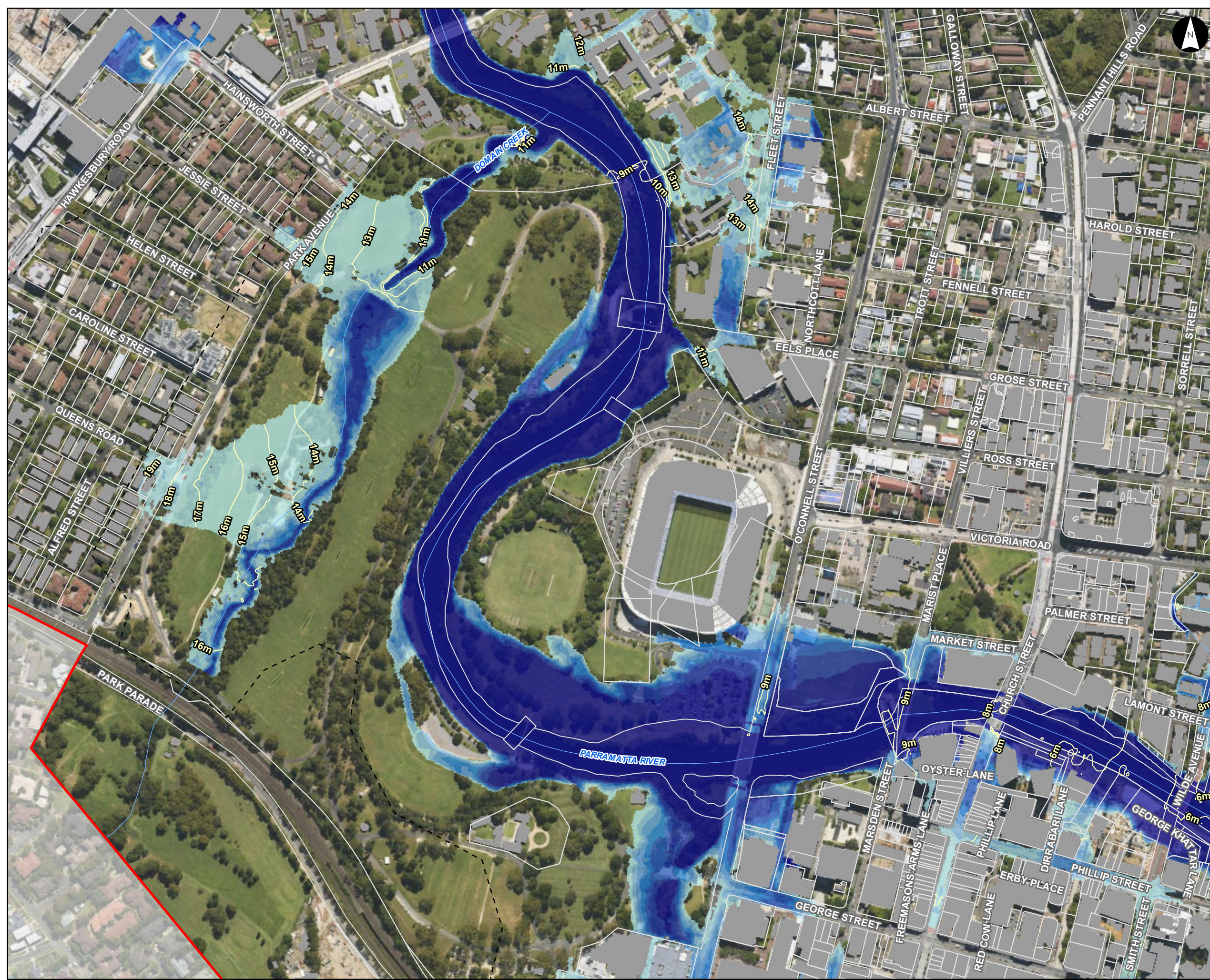


Scale at A3 1:5,000



This document has been prepared based on information provided by others as cited in the data sources. Stantec has not verified the accuracy and/or completeness of this information and shall not be responsible for any errors or omissions which may be incorporated herein as a result. Stantec assumes no responsibility for data supplied in electronic format, and the recipient accepts full responsibility for verifying the accuracy and completeness of the data.





Sensitivity Analysis SS7 Basin  
Removal FFA 1% AEP Peak  
Flood Level Contours and  
Depths

Parramatta River Flood Study

Project Code: 59916074  
Drawn By: AS  
Map: 59916074-GS-085-  
1p\_BasinFailure\_FLCD.mxd  
Rev: 02  
Date: 2023-06-12

**Legend**

- Study Area
- Watercourse
- 1m Flood Level Contour (mAHD)
- Cadastre
- Building Footprint
- Tufflow Model Extent

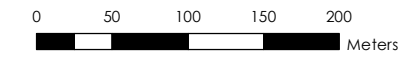
**Basin Removal Flood Depth (m)**

- 0.00 - 0.15
- 0.15 - 0.30
- 0.30 - 0.50
- 0.50 - 0.70
- 0.70 - 1.00
- 1.00 - 1.50
- > 1.50

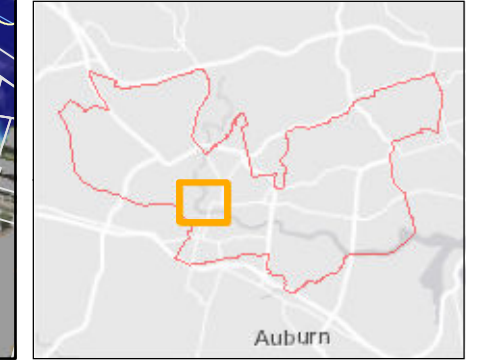
**Figure M14.23**

Notes:  
1. Coordinate System: GDA 1994 MGA Zone 56

- References:
1. Base data supplied by NSW SS and Esri
  2. Aerial imagery supplied by MetroMap
  3. Cadastre (2015) supplied by PCC



Scale at A3 1:5,000





Sensitivity Analysis SS7 Basin  
Removal FFA 1% AEP Peak  
Flood Level Contours and  
Depths

Parramatta River Flood Study

Project Code: 59916074  
Drawn By: AS  
Map: 59916074-GS-085-  
1p\_BasinFailure\_FLCD.mxd  
Rev: 02  
Date: 2023-06-12

**Legend**

- Study Area
- Watercourse
- 1m Flood Level Contour (mAHD)
- Cadastre
- Building Footprint
- Tufflow Model Extent

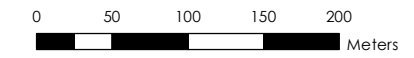
**Basin Removal Flood Depth (m)**

- 0.00 - 0.15
- 0.15 - 0.30
- 0.30 - 0.50
- 0.50 - 0.70
- 0.70 - 1.00
- 1.00 - 1.50
- > 1.50

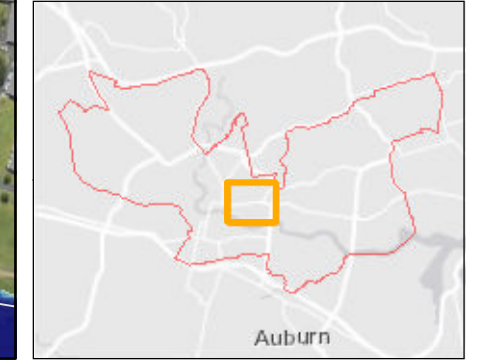
**Figure M14.24**

Notes:  
1. Coordinate System: GDA 1994 MGA Zone 56

References:  
1. Base data supplied by NSW SS and Esri  
2. Aerial imagery supplied by MetroMap  
3. Cadastre (2015) supplied by PCC



Scale at A3 1:5,000





Sensitivity Analysis SS7 Basin  
Removal FFA 1% AEP Peak  
Flood Level Contours and  
Depths

Parramatta River Flood Study

Project Code: 59916074  
Drawn By: AS  
Map: 59916074-GS-085-  
1p\_BasinFailure\_FLCD.mxd  
Rev: 02  
Date: 2023-06-12

### Legend

- Study Area
- Watercourse
- 1m Flood Level Contour (mAHD)
- Cadastre
- Building Footprint
- Tuflow Model Extent

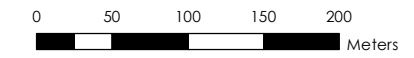
### Basin Removal Flood Depth (m)

- 0.00 - 0.15
- 0.15 - 0.30
- 0.30 - 0.50
- 0.50 - 0.70
- 0.70 - 1.00
- 1.00 - 1.50
- > 1.50

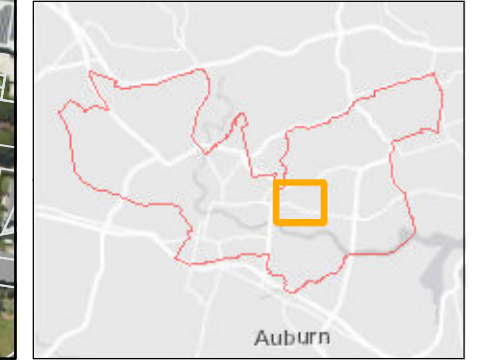
Figure M14.25

Notes:  
1. Coordinate System: GDA 1994 MGA Zone 56

References:  
1. Base data supplied by NSW SS and Esri  
2. Aerial imagery supplied by MetroMap  
3. Cadastre (2015) supplied by PCC



Scale at A3 1:5,000





**Sensitivity Analysis SS7 Basin  
Removal FFA 1% AEP Peak  
Flood Level Contours and  
Depths**

Parramatta River Flood Study

Project Code: 59916074  
 Drawn By: AS  
 Map: 59916074-GS-085-  
 1p\_BasinFailure\_FLCD.mxd  
 Rev: 02  
 Date: 2023-06-12

**Legend**

- Study Area
- Watercourse
- 1m Flood Level Contour (mAHD)
- Cadastre
- Building Footprint
- Tuflow Model Extent

**Basin Removal Flood Depth (m)**

- 0.00 - 0.15
- 0.15 - 0.30
- 0.30 - 0.50
- 0.50 - 0.70
- 0.70 - 1.00
- 1.00 - 1.50
- > 1.50

**Figure M14.28**

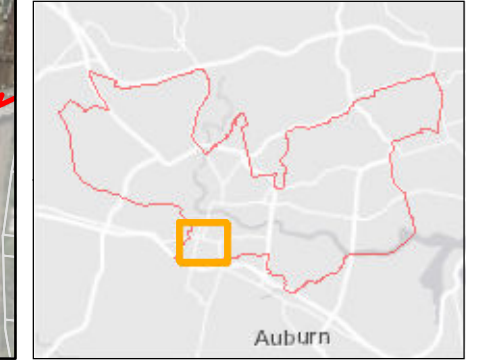
Notes:  
 1. Coordinate System: GDA 1994 MGA Zone 56

References:  
 1. Base data supplied by NSW SS and Esri  
 2. Aerial imagery supplied by MetroMap  
 3. Cadastre (2015) supplied by PCC

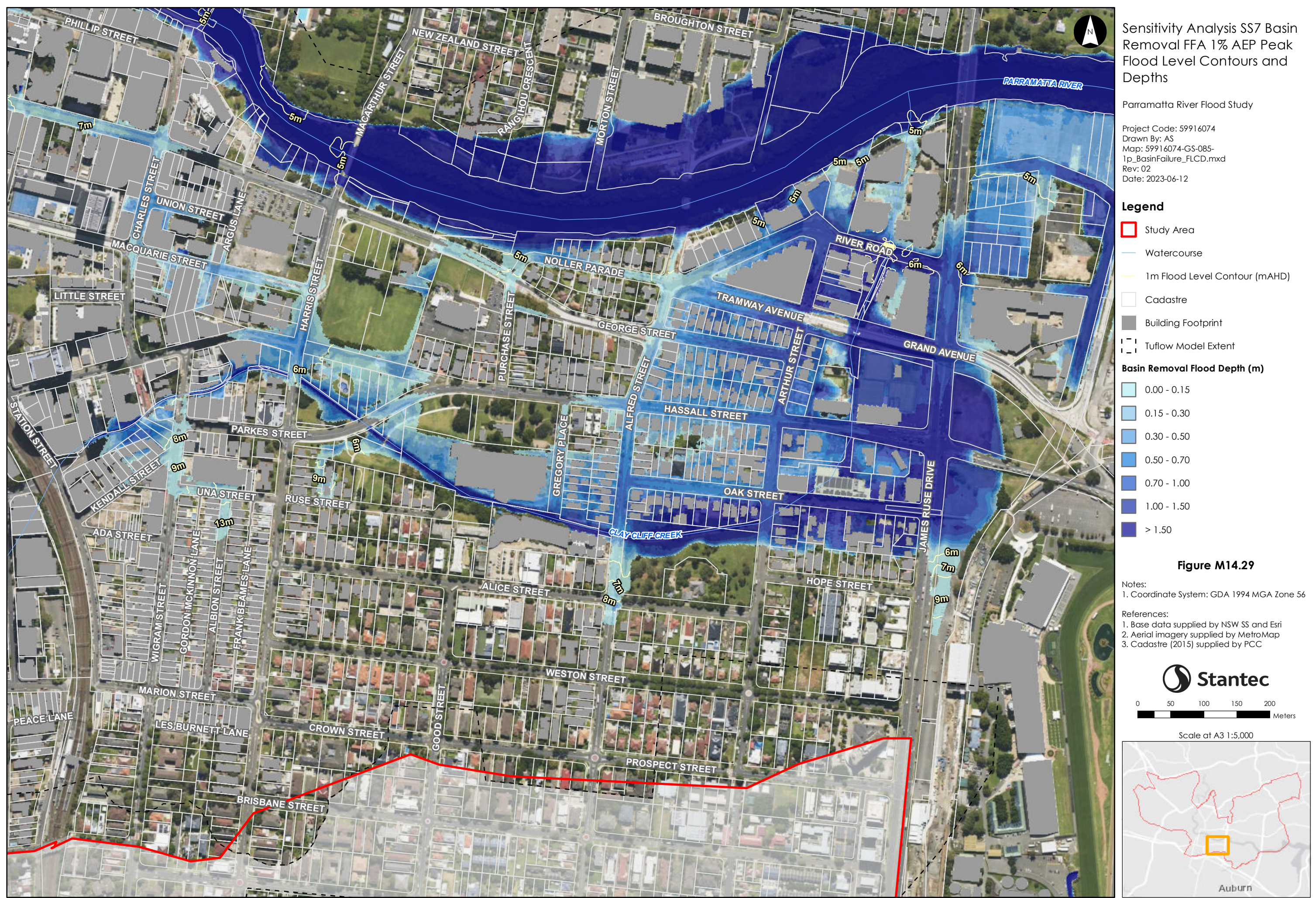
**Stantec**

0 50 100 150 200  
Meters

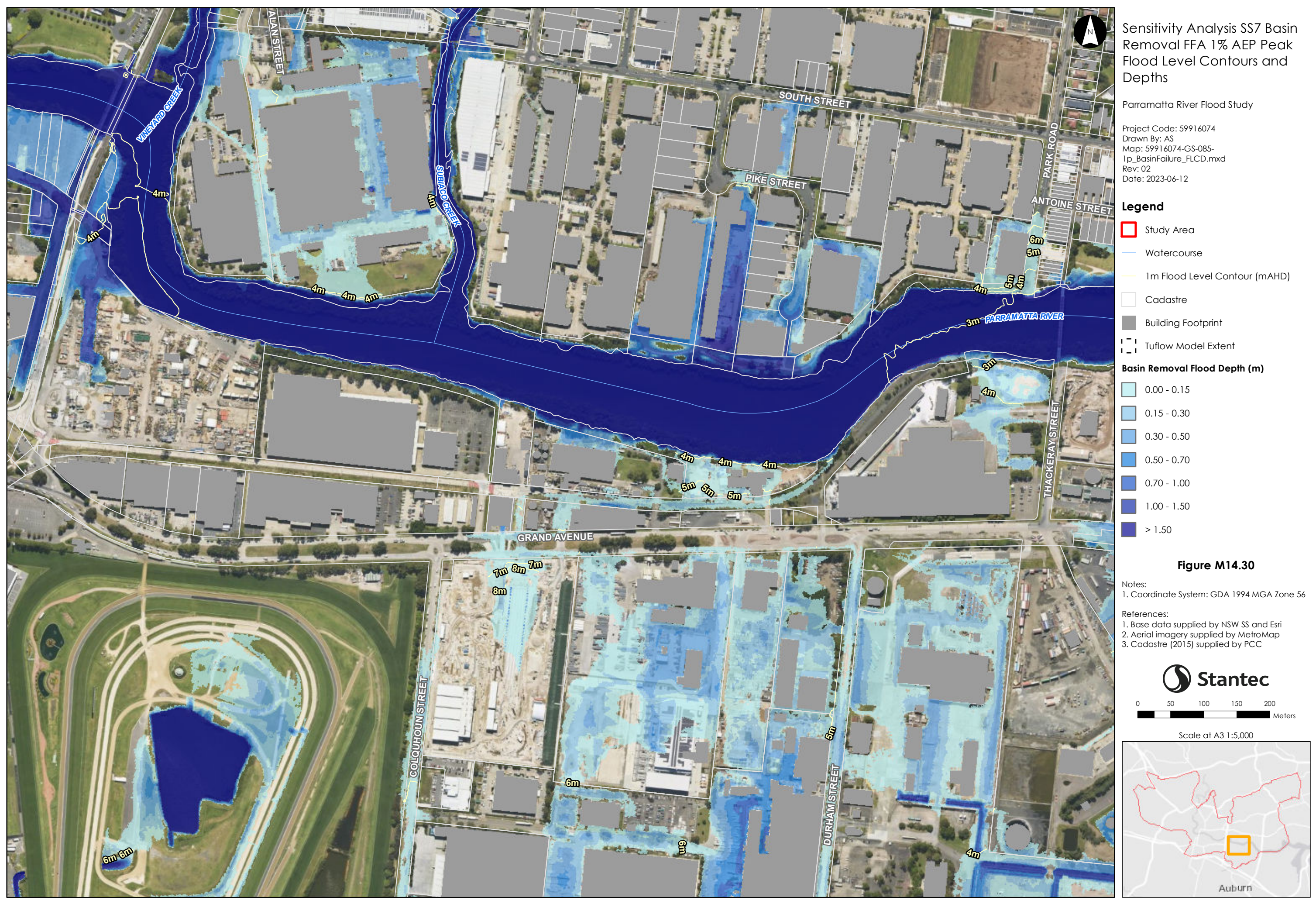
Scale at A3 1:5,000



This document has been prepared based on information provided by others as cited in the data sources. Stantec has not verified the accuracy and/or completeness of this information and shall not be responsible for any errors or omissions which may be incorporated herein as a result. Stantec assumes no responsibility for data supplied in electronic format, and the recipient accepts full responsibility for verifying the accuracy and completeness of the data.



This document has been prepared based on information provided by others as cited in the data sources. Stantec has not verified the accuracy and/or completeness of this information and shall not be responsible for any errors or omissions which may be incorporated herein as a result. Stantec assumes no responsibility for data supplied in electronic format, and the recipient accepts full responsibility for verifying the accuracy and completeness of the data.



This document has been prepared based on information provided by others as cited in the data sources. Stantec has not verified the accuracy and/or completeness of this information and shall not be responsible for any errors or omissions which may be incorporated herein as a result. Stantec assumes no responsibility for data supplied in electronic format, and the recipient accepts full responsibility for verifying the accuracy and completeness of the data.



**Sensitivity Analysis SS7 Basin  
Removal FFA 1% AEP Peak  
Flood Level Contours and  
Depths**

Parramatta River Flood Study

Project Code: 59916074  
 Drawn By: AS  
 Map: 59916074-GS-085-  
 1p\_BasinFailure\_FLCD.mxd  
 Rev: 02  
 Date: 2023-06-12

**Legend**

- Study Area
- Watercourse
- 1m Flood Level Contour (mAHD)
- Cadastre
- Building Footprint
- Tufflow Model Extent

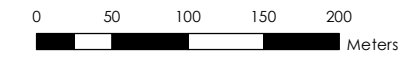
**Basin Removal Flood Depth (m)**

- 0.00 - 0.15
- 0.15 - 0.30
- 0.30 - 0.50
- 0.50 - 0.70
- 0.70 - 1.00
- 1.00 - 1.50
- > 1.50

**Figure M14.31**

Notes:  
 1. Coordinate System: GDA 1994 MGA Zone 56

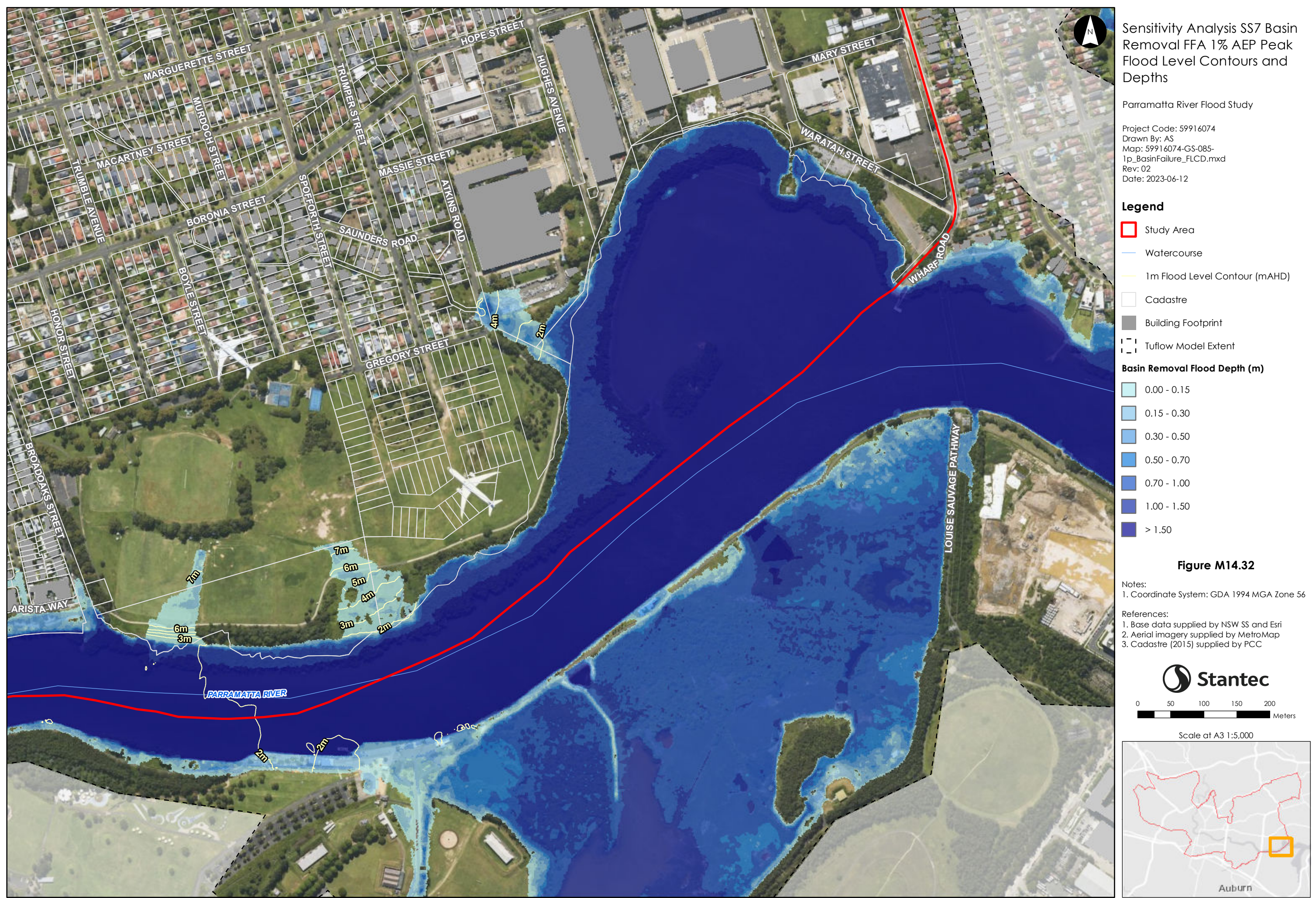
References:  
 1. Base data supplied by NSW SS and Esri  
 2. Aerial imagery supplied by MetroMap  
 3. Cadastre (2015) supplied by PCC



Scale at A3 1:5,000

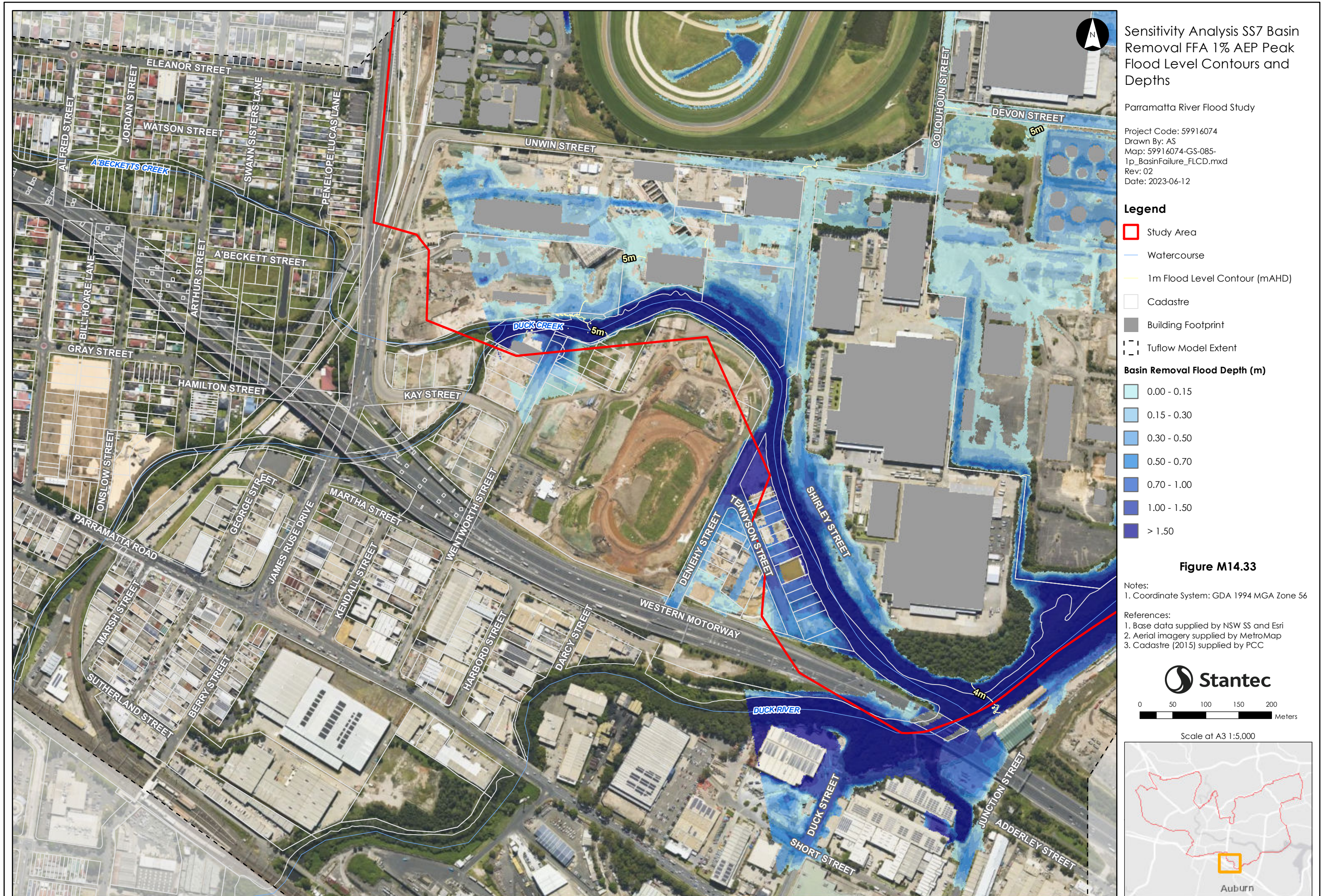


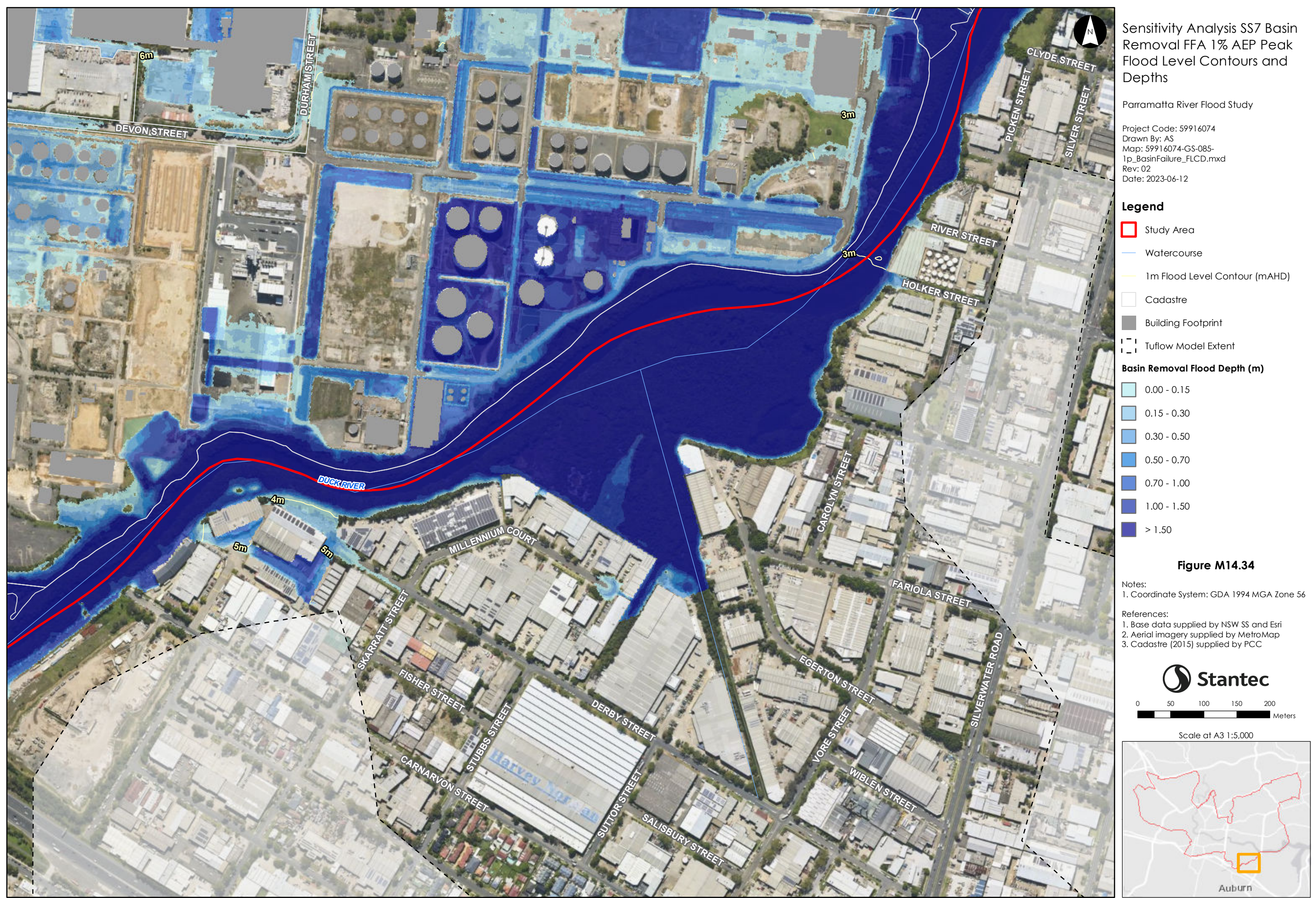
This document has been prepared based on information provided by others as cited in the data sources. Stantec has not verified the accuracy and/or completeness of this information and shall not be responsible for any errors or omissions which may be incorporated herein as a result. Stantec assumes no responsibility for data supplied in electronic format, and the recipient accepts full responsibility for verifying the accuracy and completeness of the data.



This document has been prepared based on information provided by others as cited in the data sources. Stantec has not verified the accuracy and/or completeness of this information and shall not be responsible for any errors or omissions which may be incorporated herein as a result. Stantec assumes no responsibility for data supplied in electronic format, and the recipient accepts full responsibility for verifying the accuracy and completeness of the data.







This document has been prepared based on information provided by others as cited in the data sources. Stantec has not verified the accuracy and/or completeness of this information and shall not be responsible for any errors or omissions which may be incorporated herein as a result. Stantec assumes no responsibility for data supplied in electronic format, and the recipient accepts full responsibility for verifying the accuracy and completeness of the data.



This document has been prepared based on information provided by others as cited in the data sources. Stantec has not verified the accuracy and/or completeness of this information and shall not be responsible for any errors or omissions which may be incorporated herein as a result. Stantec assumes no responsibility for data supplied in electronic format, and the recipient accepts full responsibility for verifying the accuracy and completeness of the data.



Sensitivity Analysis SS7 Basin  
Removal FFA 1% AEP Peak  
Flood Level Difference Plot

Parramatta River Flood Study  
Project Code: 59916074  
Drawn By: AS  
Map: 59916074-GS-086-  
1p\_BasinFailure\_WLD.mxd  
Rev: 03  
Date: 2023-06-12

**Legend**

- Study Area
- Watercourse
- Cadastr
- Building Footprint
- Tufflow Model Extent

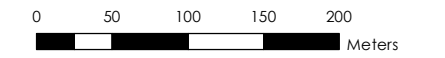
**Basin Removal less Design FFA 1%  
Water Level Difference (m)**

- Was Wet Now Dry
- Was Dry Now Wet
- <math>-0.5</math>
- <math>-0.5</math> to <math>-0.2</math>
- <math>-0.2</math> to <math>-0.1</math>
- <math>-0.1</math> to <math>-0.05</math>
- <math>-0.05</math> to <math>-0.01</math>
- <math>-0.01</math> to <math>0.01</math>
- <math>0.01</math> to <math>0.05</math>
- <math>0.05</math> to <math>0.1</math>
- <math>0.1</math> to <math>0.2</math>
- <math>0.2</math> to <math>0.5</math>
- > <math>0.5</math>

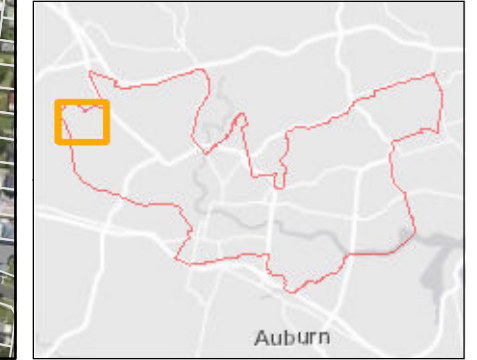
**Figure M15.6**

Notes:  
1. Coordinate System: GDA 1994 MGA Zone 56

References:  
1. Base data supplied by NSW SS and Esri  
2. Aerial imagery supplied by MetroMap  
3. Cadastr (2015) supplied by PCC



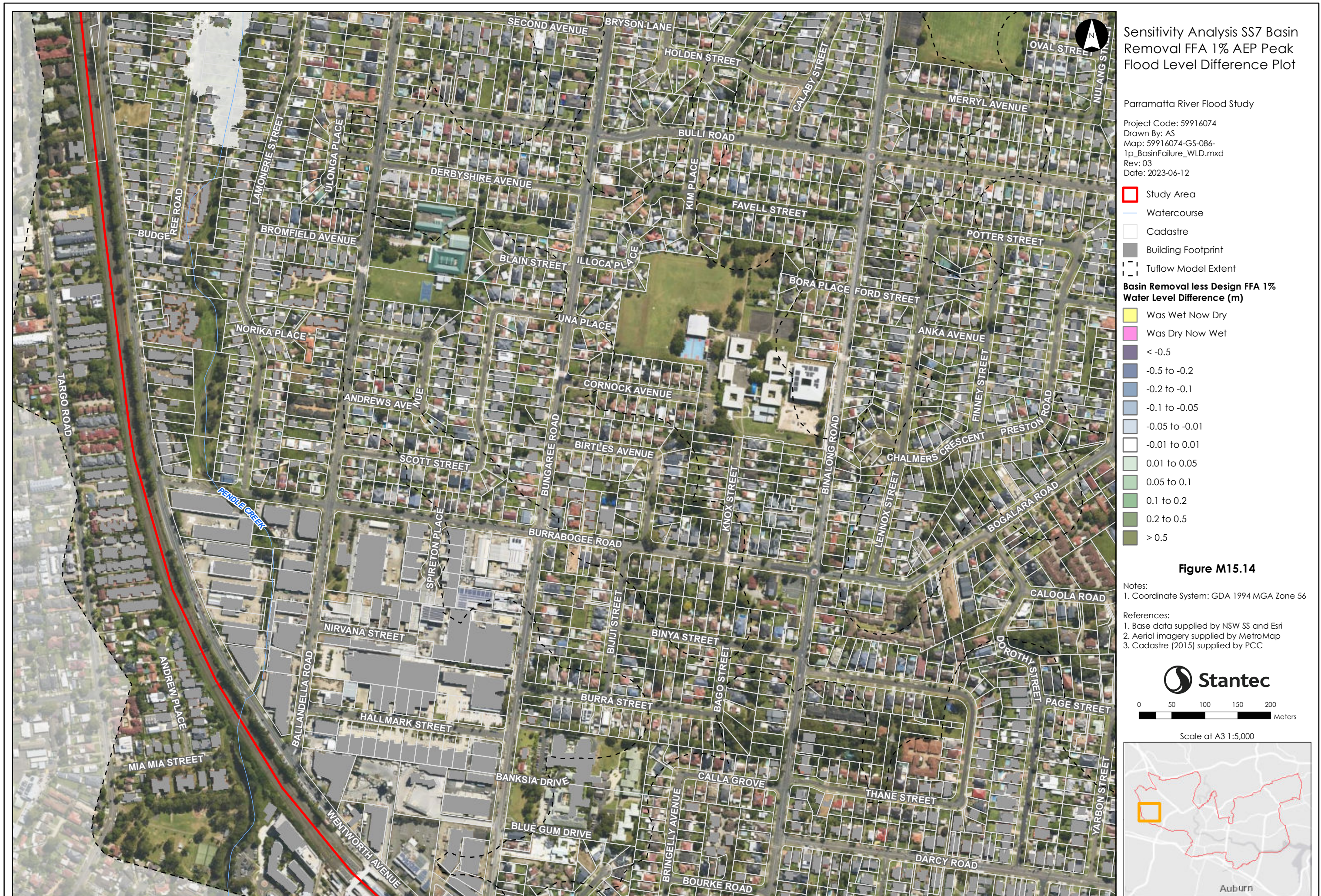
Scale at A3 1:5,000





This document has been prepared based on information provided by others as cited in the data sources. Stantec has not verified the accuracy and/or completeness of this information and shall not be responsible for any errors or omissions which may be incorporated herein as a result. Stantec assumes no responsibility for data supplied in electronic format, and the recipient accepts full responsibility for verifying the accuracy and completeness of the data.







Sensitivity Analysis SS7 Basin  
Removal FFA 1% AEP Peak  
Flood Level Difference Plot

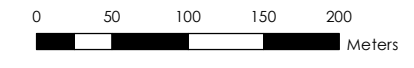
Parramatta River Flood Study  
Project Code: 59916074  
Drawn By: AS  
Map: 59916074-GS-086-  
1p\_BasinFailure\_WLD.mxd  
Rev: 03  
Date: 2023-06-12

- Study Area
  - Watercourse
  - Cadastre
  - Building Footprint
  - Tufflow Model Extent
- Basin Removal less Design FFA 1%  
Water Level Difference (m)**
- Was Wet Now Dry
  - Was Dry Now Wet
  - < -0.5
  - 0.5 to -0.2
  - 0.2 to -0.1
  - 0.1 to -0.05
  - 0.05 to -0.01
  - 0.01 to 0.01
  - 0.01 to 0.05
  - 0.05 to 0.1
  - 0.1 to 0.2
  - 0.2 to 0.5
  - > 0.5

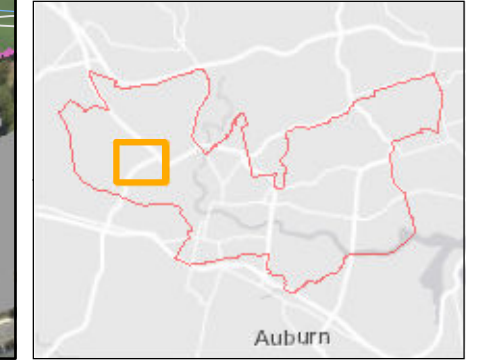
**Figure M15.15**

Notes:  
1. Coordinate System: GDA 1994 MGA Zone 56

References:  
1. Base data supplied by NSW SS and Esri  
2. Aerial imagery supplied by MetroMap  
3. Cadastre (2015) supplied by PCC



Scale at A3 1:5,000



This document has been prepared based on information provided by others as cited in the data sources. Stantec has not verified the accuracy and/or completeness of this information and shall not be responsible for any errors or omissions which may be incorporated herein as a result. Stantec assumes no responsibility for data supplied in electronic format, and the recipient accepts full responsibility for verifying the accuracy and completeness of the data.





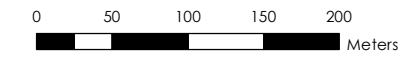
Sensitivity Analysis SS7 Basin  
Removal FFA 1% AEP Peak  
Flood Level Difference Plot

Parramatta River Flood Study  
Project Code: 59916074  
Drawn By: AS  
Map: 59916074-GS-086-  
1p\_BasinFailure\_WLD.mxd  
Rev: 03  
Date: 2023-06-12

- Study Area
  - Watercourse
  - Cadastre
  - Building Footprint
  - Tufflow Model Extent
- Basin Removal less Design FFA 1%  
Water Level Difference (m)**
- Was Wet Now Dry
  - Was Dry Now Wet
  - < -0.5
  - 0.5 to -0.2
  - 0.2 to -0.1
  - 0.1 to -0.05
  - 0.05 to -0.01
  - 0.01 to 0.01
  - 0.01 to 0.05
  - 0.05 to 0.1
  - 0.1 to 0.2
  - 0.2 to 0.5
  - > 0.5

**Figure M15.16**

- Notes:
1. Coordinate System: GDA 1994 MGA Zone 56
- References:
1. Base data supplied by NSW SS and Esri
  2. Aerial imagery supplied by MetroMap
  3. Cadastre (2015) supplied by PCC



Scale at A3 1:5,000





Sensitivity Analysis SS7 Basin  
Removal FFA 1% AEP Peak  
Flood Level Difference Plot

Parramatta River Flood Study  
Project Code: 59916074  
Drawn By: AS  
Map: 59916074-GS-086-  
1p\_BasinFailure\_WLD.mxd  
Rev: 03  
Date: 2023-06-12

**Study Area**

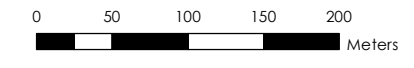
- Watercourse
- Cadastral
- Building Footprint
- Tufflow Model Extent

**Basin Removal less Design FFA 1%  
Water Level Difference (m)**

- Was Wet Now Dry
- Was Dry Now Wet
- < -0.5
- 0.5 to -0.2
- 0.2 to -0.1
- 0.1 to -0.05
- 0.05 to -0.01
- 0.01 to 0.01
- 0.01 to 0.05
- 0.05 to 0.1
- 0.1 to 0.2
- 0.2 to 0.5
- > 0.5

**Figure M15.22**

- Notes:
- Coordinate System: GDA 1994 MGA Zone 56
- References:
- Base data supplied by NSW SS and Esri
  - Aerial imagery supplied by MetroMap
  - Cadastral (2015) supplied by PCC



Scale at A3 1:5,000



This document has been prepared based on information provided by others as cited in the data sources. Stantec has not verified the accuracy and/or completeness of this information and shall not be responsible for any errors or omissions which may be incorporated herein as a result. Stantec assumes no responsibility for data supplied in electronic format, and the recipient accepts full responsibility for verifying the accuracy and completeness of the data.



This document has been prepared based on information provided by others as cited in the data sources. Stantec has not verified the accuracy and/or completeness of this information and shall not be responsible for any errors or omissions which may be incorporated herein as a result. Stantec assumes no responsibility for data supplied in electronic format, and the recipient accepts full responsibility for verifying the accuracy and completeness of the data.





Sensitivity Analysis SS7 Basin  
Removal FFA 1% AEP Peak  
Flood Level Difference Plot

Parramatta River Flood Study

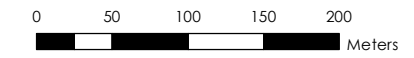
Project Code: 59916074  
Drawn By: AS  
Map: 59916074-GS-086-  
1p\_BasinFailure\_WLD.mxd  
Rev: 03  
Date: 2023-06-12

- Study Area
  - Watercourse
  - Cadastre
  - Building Footprint
  - Tufflow Model Extent
- Basin Removal less Design FFA 1%  
Water Level Difference (m)**
- Was Wet Now Dry
  - Was Dry Now Wet
  - < -0.5
  - 0.5 to -0.2
  - 0.2 to -0.1
  - 0.1 to -0.05
  - 0.05 to -0.01
  - 0.01 to 0.01
  - 0.01 to 0.05
  - 0.05 to 0.1
  - 0.1 to 0.2
  - 0.2 to 0.5
  - > 0.5

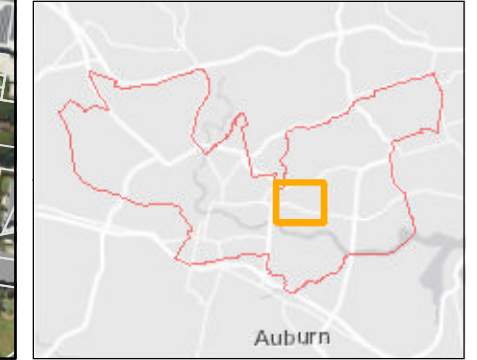
**Figure M15.25**

Notes:  
1. Coordinate System: GDA 1994 MGA Zone 56

References:  
1. Base data supplied by NSW SS and Esri  
2. Aerial imagery supplied by MetroMap  
3. Cadastre (2015) supplied by PCC



Scale at A3 1:5,000





Sensitivity Analysis SS7 Basin  
Removal FFA 1% AEP Peak  
Flood Level Difference Plot

Parramatta River Flood Study  
Project Code: 59916074  
Drawn By: AS  
Map: 59916074-GS-086-  
1p\_BasinFailure\_WLD.mxd  
Rev: 03  
Date: 2023-06-12

**Legend**

- Study Area
- Watercourse
- Cadastre
- Building Footprint
- Tuflow Model Extent

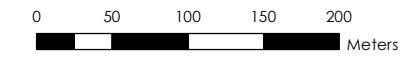
**Basin Removal less Design FFA 1%  
Water Level Difference (m)**

- Was Wet Now Dry
- Was Dry Now Wet
- < -0.5
- 0.5 to -0.2
- 0.2 to -0.1
- 0.1 to -0.05
- 0.05 to -0.01
- 0.01 to 0.01
- 0.01 to 0.05
- 0.05 to 0.1
- 0.1 to 0.2
- 0.2 to 0.5
- > 0.5

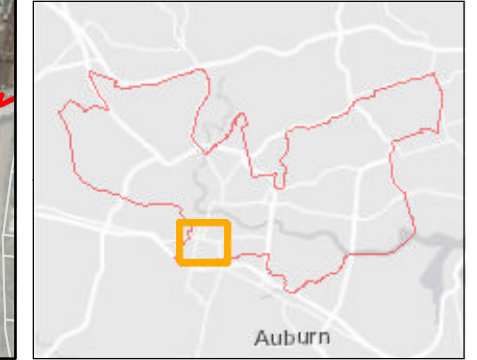
**Figure M15.28**

Notes:  
1. Coordinate System: GDA 1994 MGA Zone 56

References:  
1. Base data supplied by NSW SS and Esri  
2. Aerial imagery supplied by MetroMap  
3. Cadastre (2015) supplied by PCC



Scale at A3 1:5,000



This document has been prepared based on information provided by others as cited in the data sources. Stantec has not verified the accuracy and/or completeness of this information and shall not be responsible for any errors or omissions which may be incorporated herein as a result. Stantec assumes no responsibility for data supplied in electronic format, and the recipient accepts full responsibility for verifying the accuracy and completeness of the data.



This document has been prepared based on information provided by others as cited in the data sources. Stantec has not verified the accuracy and/or completeness of this information and shall not be responsible for any errors or omissions which may be incorporated herein as a result. Stantec assumes no responsibility for data supplied in electronic format, and the recipient accepts full responsibility for verifying the accuracy and completeness of the data.



Sensitivity Analysis SS7 Basin  
Removal FFA 1% AEP Peak  
Flood Level Difference Plot

Parramatta River Flood Study

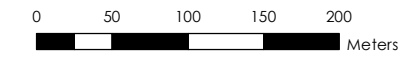
Project Code: 59916074  
Drawn By: AS  
Map: 59916074-GS-086-  
1p\_BasinFailure\_WLD.mxd  
Rev: 03  
Date: 2023-06-12

- Study Area
  - Watercourse
  - Cadastre
  - Building Footprint
  - Tufflow Model Extent
- Basin Removal less Design FFA 1%  
Water Level Difference (m)**
- Was Wet Now Dry
  - Was Dry Now Wet
  - < -0.5
  - 0.5 to -0.2
  - 0.2 to -0.1
  - 0.1 to -0.05
  - 0.05 to -0.01
  - 0.01 to 0.01
  - 0.01 to 0.05
  - 0.05 to 0.1
  - 0.1 to 0.2
  - 0.2 to 0.5
  - > 0.5

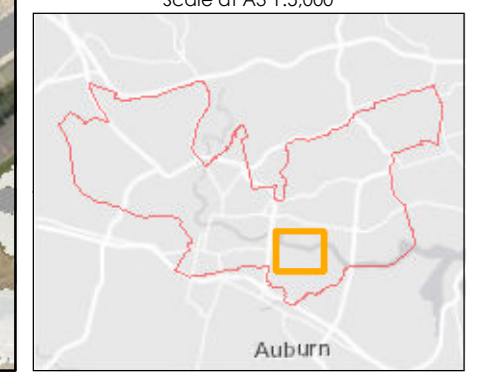
**Figure M15.30**

Notes:  
1. Coordinate System: GDA 1994 MGA Zone 56

- References:
1. Base data supplied by NSW SS and Esri
  2. Aerial imagery supplied by MetroMap
  3. Cadastre (2015) supplied by PCC



Scale at A3 1:5,000







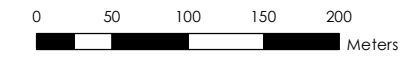
Sensitivity Analysis SS7 Basin  
Removal FFA 1% AEP Peak  
Flood Level Difference Plot

Parramatta River Flood Study  
Project Code: 59916074  
Drawn By: AS  
Map: 59916074-GS-086-  
1p\_BasinFailure\_WLD.mxd  
Rev: 03  
Date: 2023-06-12

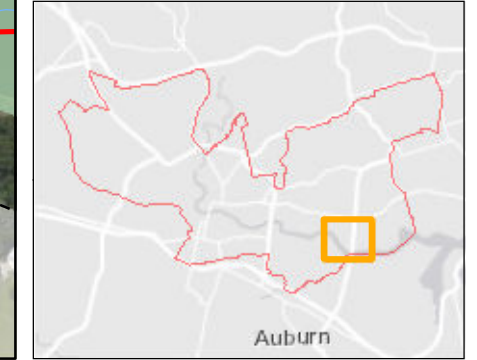
- Study Area
  - Watercourse
  - Cadastre
  - Building Footprint
  - Tufflow Model Extent
- Basin Removal less Design FFA 1%  
Water Level Difference (m)**
- Was Wet Now Dry
  - Was Dry Now Wet
  - <math>< -0.5</math>
  - 0.5 to -0.2
  - 0.2 to -0.1
  - 0.1 to -0.05
  - 0.05 to -0.01
  - 0.01 to 0.01
  - 0.01 to 0.05
  - 0.05 to 0.1
  - 0.1 to 0.2
  - 0.2 to 0.5
  - > 0.5

**Figure M15.31**

- Notes:
- Coordinate System: GDA 1994 MGA Zone 56
- References:
- Base data supplied by NSW SS and Esri
  - Aerial imagery supplied by MetroMap
  - Cadastre (2015) supplied by PCC



Scale at A3 1:5,000



This document has been prepared based on information provided by others as cited in the data sources. Stantec has not verified the accuracy and/or completeness of this information and shall not be responsible for any errors or omissions which may be incorporated herein as a result. Stantec assumes no responsibility for data supplied in electronic format, and the recipient accepts full responsibility for verifying the accuracy and completeness of the data.



Sensitivity Analysis SS7 Basin  
Removal FFA 1% AEP Peak  
Flood Level Difference Plot

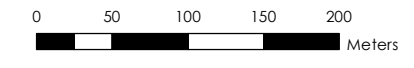
Parramatta River Flood Study  
Project Code: 59916074  
Drawn By: AS  
Map: 59916074-GS-086-  
1p\_BasinFailure\_WLD.mxd  
Rev: 03  
Date: 2023-06-12

- Study Area
  - Watercourse
  - Cadastre
  - Building Footprint
  - Tuflow Model Extent
- Basin Removal less Design FFA 1%  
Water Level Difference (m)**
- Was Wet Now Dry
  - Was Dry Now Wet
  - < -0.5
  - 0.5 to -0.2
  - 0.2 to -0.1
  - 0.1 to -0.05
  - 0.05 to -0.01
  - 0.01 to 0.01
  - 0.01 to 0.05
  - 0.05 to 0.1
  - 0.1 to 0.2
  - 0.2 to 0.5
  - > 0.5

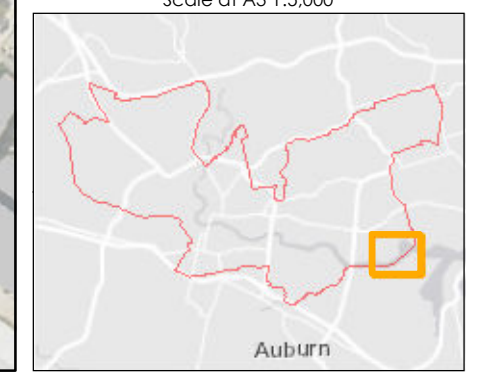
**Figure M15.32**

Notes:  
1. Coordinate System: GDA 1994 MGA Zone 56

References:  
1. Base data supplied by NSW SS and Esri  
2. Aerial imagery supplied by MetroMap  
3. Cadastre (2015) supplied by PCC



Scale at A3 1:5,000





Sensitivity Analysis SS7 Basin Removal FFA 1% AEP Peak Flood Level Difference Plot

Parramatta River Flood Study

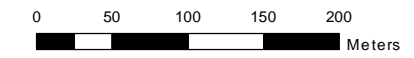
Project Code: 59916074  
 Drawn By: AS  
 Map: 59916074-G-S086-1p\_BasinFailure\_WLD.mxd  
 Rev: 03  
 Date: 2023-06-12

- Study Area
  - Watercourse
  - Cadastre
  - Building Footprint
  - Tufflow Model Extent
- Basin Removal less Design FFA 1% Water Level Difference (m)
- Was Wet Now Dry
  - Was Dry Now Wet
  - < -0.5
  - 0.5 to -0.2
  - 0.2 to -0.1
  - 0.1 to -0.05
  - 0.05 to -0.01
  - 0.01 to 0.01
  - 0.01 to 0.05
  - 0.05 to 0.1
  - 0.1 to 0.2
  - 0.2 to 0.5
  - > 0.5

Figure M15.33

Notes  
 1. Coordinate System: GDA 1994 MGA Zone 56

References  
 1. Base data supplied by NSW SS and Esri  
 2. Aerial imagery supplied by MetroMap  
 3. Cadastre (2015) supplied by PCC



Scale at A3 1:5,000





Sensitivity Analysis SS7 Basin Removal FFA 1% AEP Peak Flood Level Difference Plot

Parramatta River Flood Study  
Project Code: 59916074  
Drawn By: AS  
Map: 59916074-GS-086-1p\_BasinFailure\_WLD.mxd  
Rev: 03  
Date: 2023-06-12

**Study Area**

- Watercourse
- Cadastr
- Building Footprint
- Tuflow Model Extent

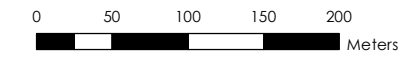
**Basin Removal less Design FFA 1% Water Level Difference (m)**

- Was Wet Now Dry
- Was Dry Now Wet
- < -0.5
- 0.5 to -0.2
- 0.2 to -0.1
- 0.1 to -0.05
- 0.05 to -0.01
- 0.01 to 0.01
- 0.01 to 0.05
- 0.05 to 0.1
- 0.1 to 0.2
- 0.2 to 0.5
- > 0.5

**Figure M15.34**

Notes:  
1. Coordinate System: GDA 1994 MGA Zone 56

References:  
1. Base data supplied by NSW SS and Esri  
2. Aerial imagery supplied by MetroMap  
3. Cadastr (2015) supplied by PCC



Scale at A3 1:5,000

