



This document has been prepared based on information provided by others as cited in the data sources. Stantec has not verified the accuracy and/or completeness of this information and shall not be responsible for any errors or omissions which may be incorporated herein as a result. Stantec assumes no responsibility for data supplied in electronic format, and the recipient accepts full responsibility for verifying the accuracy and completeness of the data.



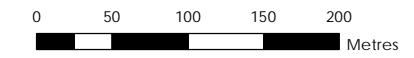
Sensitivity Analysis SS6 Increase in Tailwater Level +0.3m FFA 1% AEP Peak Flood Level Difference Plot

Parramatta River Flood Study
Project Code: 59916074
Drawn By: AS
Map: 59916074-GS-063-
1p_SensitivityIncTailwater_WLD_5k.mxd
Rev: 07
Date: 2023-06-19

- Study Area
- Watercourse
- Cadastre
- Building Footprint
- Tuflow Model Extent
- TW+0.3m less Design FFA 1% Water Level Difference (m)
 - Was Wet Now Dry
 - Was Dry Now Wet
 - < -0.5
 - 0.5 to -0.2
 - 0.2 to -0.1
 - 0.1 to -0.05
 - 0.05 to -0.01
 - 0.01 to 0.01
 - 0.01 to 0.05
 - 0.05 to 0.1
 - 0.1 to 0.2
 - 0.2 to 0.5
 - > 0.5

Figure M13.2

- Notes:
1. Coordinate System: GDA 1994 MGA Zone 56
- References:
1. Base data supplied by NSW SS and Esri
2. Aerial imagery supplied by MetroMap
3. Cadastre (2015) supplied by PCC



Scale at A3 1:5,000



This document has been prepared based on information provided by others as cited in the data sources. Stantec has not verified the accuracy and/or completeness of this information and shall not be responsible for any errors or omissions which may be incorporated herein as a result. Stantec assumes no responsibility for data supplied in electronic format, and the recipient accepts full responsibility for verifying the accuracy and completeness of the data.



Sensitivity Analysis SS6
 Increase in Tailwater Level
 +0.3m FFA 1% AEP Peak
 Flood Level Difference Plot

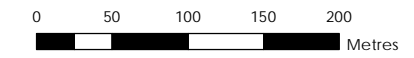
Parramatta River Flood Study
 Project Code: 59916074
 Drawn By: AS
 Map: 59916074-GS-063-
 1p_SensitivityIncTailwater_WLD_5k.mxd
 Rev: 07
 Date: 2023-06-19

- Study Area
 - Watercourse
 - Cadastre
 - Building Footprint
 - Tuflow Model Extent
- TW+0.3m less Design FFA 1% Water Level Difference (m)
- Was Wet Now Dry
 - Was Dry Now Wet
 - < -0.5
 - 0.5 to -0.2
 - 0.2 to -0.1
 - 0.1 to -0.05
 - 0.05 to -0.01
 - 0.01 to 0.01
 - 0.01 to 0.05
 - 0.05 to 0.1
 - 0.1 to 0.2
 - 0.2 to 0.5
 - > 0.5

Figure M13.3

Notes:
 1. Coordinate System: GDA 1994 MGA Zone 56

References:
 1. Base data supplied by NSW SS and Esri
 2. Aerial imagery supplied by MetroMap
 3. Cadastre (2015) supplied by PCC



Scale at A3 1:5,000



This document has been prepared based on information provided by others as cited in the data sources. Stantec has not verified the accuracy and/or completeness of this information and shall not be responsible for any errors or omissions which may be incorporated herein as a result. Stantec assumes no responsibility for data supplied in electronic format, and the recipient accepts full responsibility for verifying the accuracy and completeness of the data.



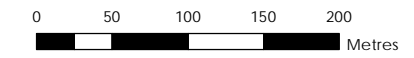
Sensitivity Analysis SS6
Increase in Tailwater Level
+0.3m FFA 1% AEP Peak
Flood Level Difference Plot

Parramatta River Flood Study
Project Code: 59916074
Drawn By: AS
Map: 59916074-GS-063-
1p_SensitivityIncTailwater_WLD_5k.mxd
Rev: 07
Date: 2023-06-19

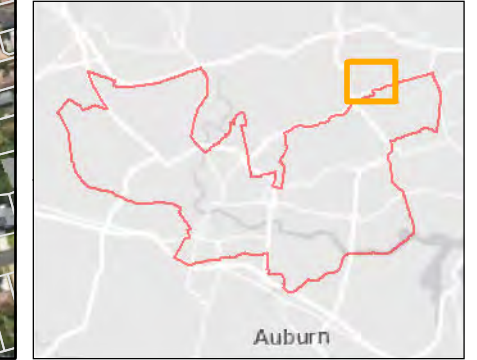
- Study Area
- Watercourse
- Cadastre
- Building Footprint
- Tuflow Model Extent
- TW+0.3m less Design FFA 1% Water Level Difference (m)
 - Was Wet Now Dry
 - Was Dry Now Wet
 - < -0.5
 - 0.5 to -0.2
 - 0.2 to -0.1
 - 0.1 to -0.05
 - 0.05 to -0.01
 - 0.01 to 0.01
 - 0.01 to 0.05
 - 0.05 to 0.1
 - 0.1 to 0.2
 - 0.2 to 0.5
 - > 0.5

Figure M13.4

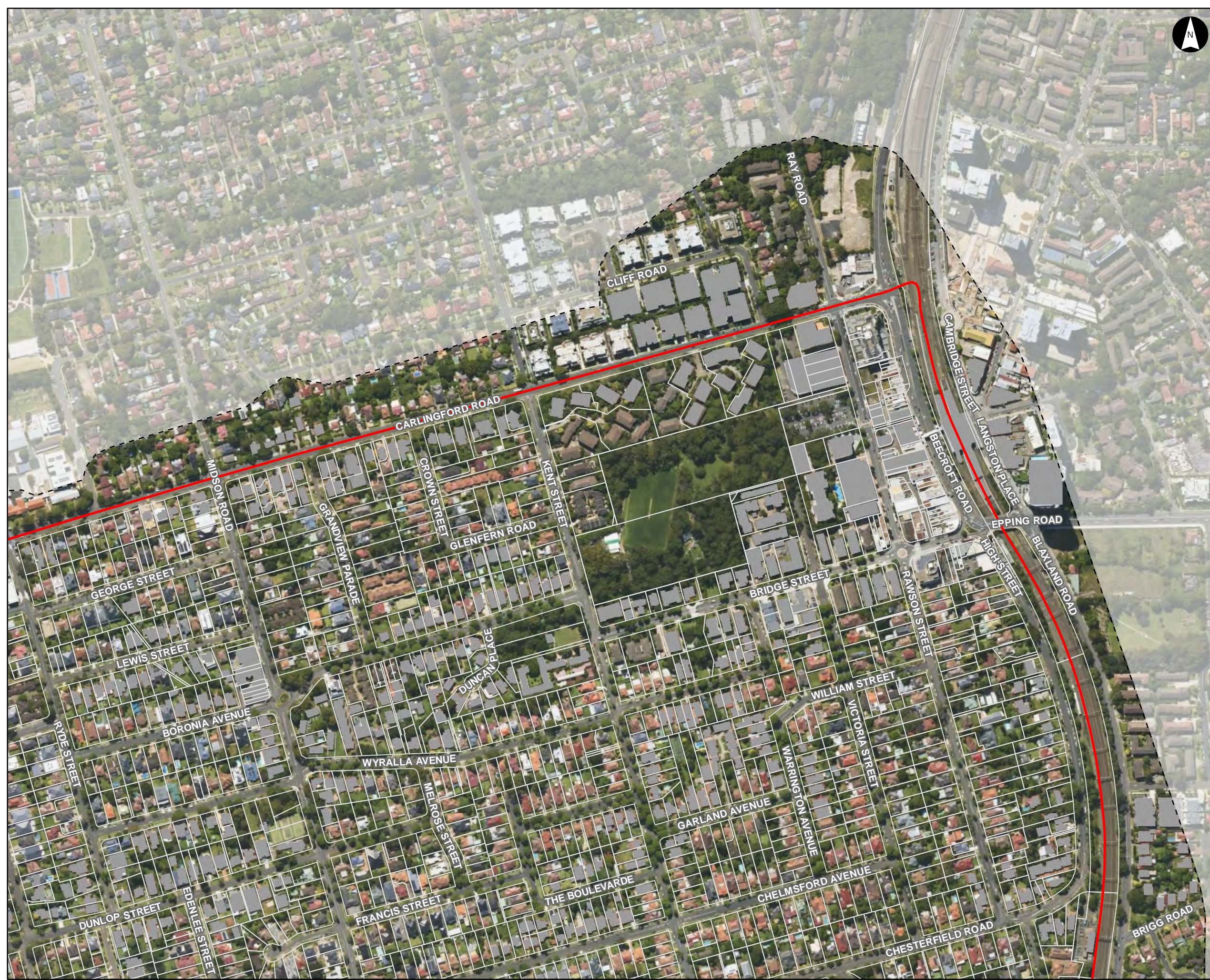
- Notes:
1. Coordinate System: GDA 1994 MGA Zone 56
- References:
1. Base data supplied by NSW SS and Esri
 2. Aerial imagery supplied by MetroMap
 3. Cadastre (2015) supplied by PCC



Scale at A3 1:5,000



This document has been prepared based on information provided by others as cited in the data sources. Stantec has not verified the accuracy and/or completeness of this information and shall not be responsible for any errors or omissions which may be incorporated herein as a result. Stantec assumes no responsibility for data supplied in electronic format, and the recipient accepts full responsibility for verifying the accuracy and completeness of the data.



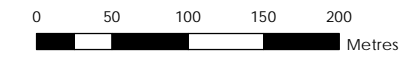
Sensitivity Analysis SS6
Increase in Tailwater Level
+0.3m FFA 1% AEP Peak
Flood Level Difference Plot

Parramatta River Flood Study
Project Code: 59916074
Drawn By: AS
Map: 59916074-GS-063-
1p_SensitivityIncTailwater_WLD_5k.mxd
Rev: 07
Date: 2023-06-19

- Study Area
- Watercourse
- Cadastre
- Building Footprint
- Tuflow Model Extent
- TW+0.3m less Design FFA 1% Water Level Difference (m)
 - Was Wet Now Dry
 - Was Dry Now Wet
 - < -0.5
 - 0.5 to -0.2
 - 0.2 to -0.1
 - 0.1 to -0.05
 - 0.05 to -0.01
 - 0.01 to 0.01
 - 0.01 to 0.05
 - 0.05 to 0.1
 - 0.1 to 0.2
 - 0.2 to 0.5
 - > 0.5

Figure M13.5

- Notes:
- Coordinate System: GDA 1994 MGA Zone 56
- References:
- Base data supplied by NSW SS and Esri
 - Aerial imagery supplied by MetroMap
 - Cadastre (2015) supplied by PCC



Scale at A3 1:5,000





Sensitivity Analysis SS6
 Increase in Tailwater Level
 +0.3m FFA 1% AEP Peak
 Flood Level Difference Plot

Parramatta River Flood Study
 Project Code: 59916074
 Drawn By: AS
 Map: 59916074-GS-063-
 1p_SensitivityIncTailwater_WLD_5k.mxd
 Rev: 07
 Date: 2023-06-19

Study Area

Watercourse

Cadastre

Building Footprint

Tuflow Model Extent

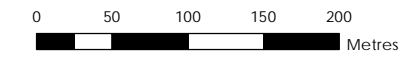
TW+0.3m less Design FFA 1% Water Level Difference (m)

- Was Wet Now Dry
- Was Dry Now Wet
- < -0.5
- 0.5 to -0.2
- 0.2 to -0.1
- 0.1 to -0.05
- 0.05 to -0.01
- 0.01 to 0.01
- 0.01 to 0.05
- 0.05 to 0.1
- 0.1 to 0.2
- 0.2 to 0.5
- > 0.5

Figure M13.6

Notes:
 1. Coordinate System: GDA 1994 MGA Zone 56

References:
 1. Base data supplied by NSW SS and Esri
 2. Aerial imagery supplied by MetroMap
 3. Cadastre (2015) supplied by PCC



Scale at A3 1:5,000



This document has been prepared based on information provided by others as cited in the data sources. Stantec has not verified the accuracy and/or completeness of this information and shall not be responsible for any errors or omissions which may be incorporated herein as a result. Stantec assumes no responsibility for data supplied in electronic format, and the recipient accepts full responsibility for verifying the accuracy and completeness of the data.



This document has been prepared based on information provided by others as cited in the data sources. Stantec has not verified the accuracy and/or completeness of this information and shall not be responsible for any errors or omissions which may be incorporated herein as a result. Stantec assumes no responsibility for data supplied in electronic format, and the recipient accepts full responsibility for verifying the accuracy and completeness of the data.



Sensitivity Analysis SS6
 Increase in Tailwater Level
 +0.3m FFA 1% AEP Peak
 Flood Level Difference Plot

Parramatta River Flood Study
 Project Code: 59916074
 Drawn By: AS
 Map: 59916074-GS-063-
 1p_SensitivityIncTailwater_WLD_5k.mxd
 Rev: 07
 Date: 2023-06-19

Study Area

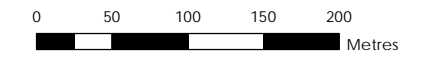
- Watercourse
- Cadastral
- Building Footprint
- Tuflow Model Extent

TW+0.3m less Design FFA 1% Water Level Difference (m)

- Was Wet Now Dry
- Was Dry Now Wet
- < -0.5
- 0.5 to -0.2
- 0.2 to -0.1
- 0.1 to -0.05
- 0.05 to -0.01
- 0.01 to 0.01
- 0.01 to 0.05
- 0.05 to 0.1
- 0.1 to 0.2
- 0.2 to 0.5
- > 0.5

Figure M13.8

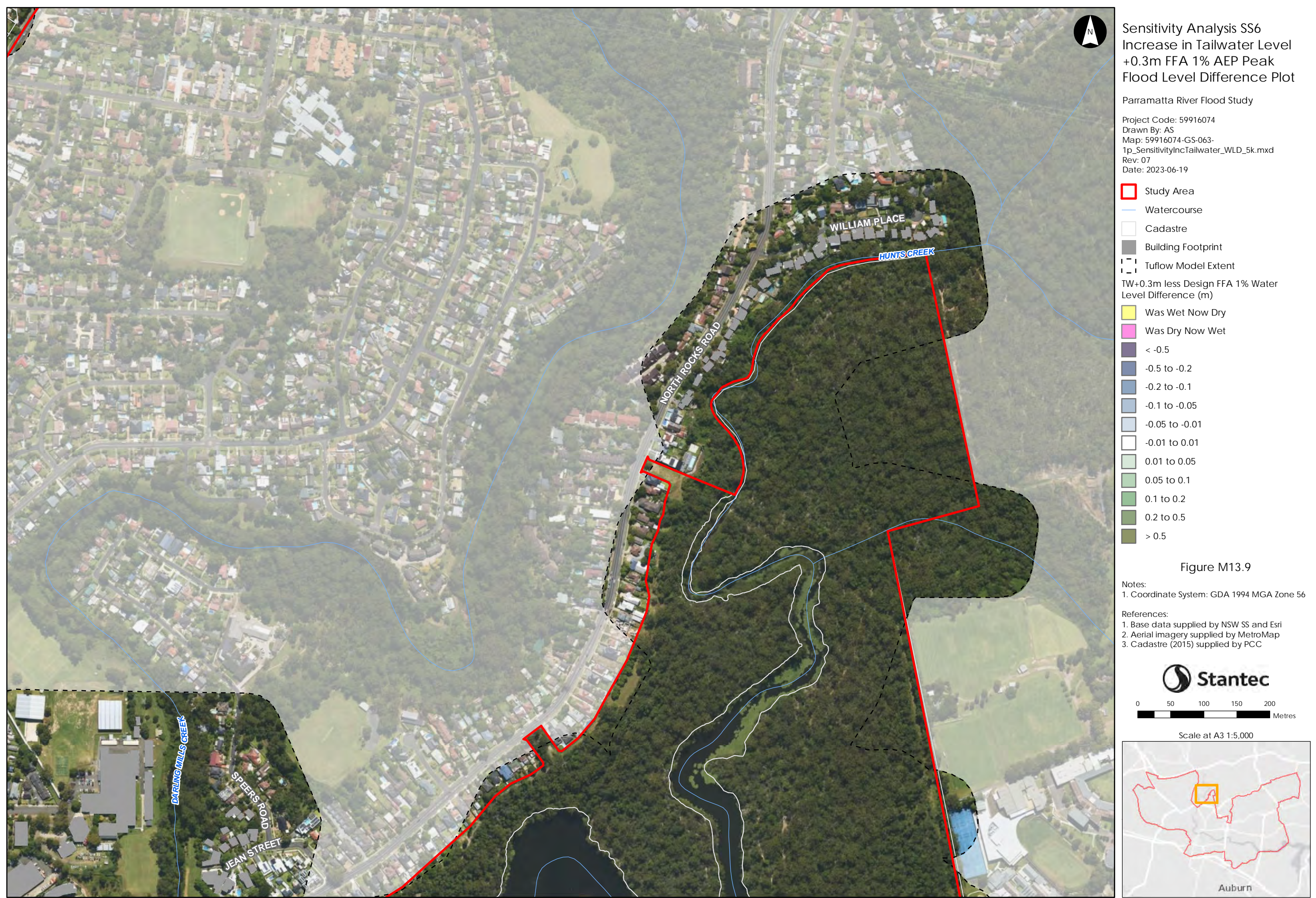
- Notes:
- Coordinate System: GDA 1994 MGA Zone 56
- References:
- Base data supplied by NSW SS and Esri
 - Aerial imagery supplied by MetroMap
 - Cadastral (2015) supplied by PCC



Scale at A3 1:5,000



This document has been prepared based on information provided by others as cited in the data sources. Stantec has not verified the accuracy and/or completeness of this information and shall not be responsible for any errors or omissions which may be incorporated herein as a result. Stantec assumes no responsibility for data supplied in electronic format, and the recipient accepts full responsibility for verifying the accuracy and completeness of the data.



This document has been prepared based on information provided by others as cited in the data sources. Stantec has not verified the accuracy and/or completeness of this information and shall not be responsible for any errors or omissions which may be incorporated herein as a result. Stantec assumes no responsibility for data supplied in electronic format, and the recipient accepts full responsibility for verifying the accuracy and completeness of the data.





Sensitivity Analysis SS6
 Increase in Tailwater Level
 +0.3m FFA 1% AEP Peak
 Flood Level Difference Plot

Parramatta River Flood Study
 Project Code: 59916074
 Drawn By: AS
 Map: 59916074-GS-063-
 1p_SensitivityIncTailwater_WLD_5k.mxd
 Rev: 07
 Date: 2023-06-19

Legend

- Study Area
- Watercourse
- Cadastre
- Building Footprint
- Tuflow Model Extent

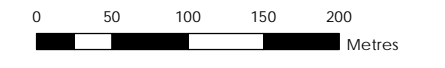
TW+0.3m less Design FFA 1% Water Level Difference (m)

- Was Wet Now Dry
- Was Dry Now Wet
- < -0.5
- 0.5 to -0.2
- 0.2 to -0.1
- 0.1 to -0.05
- 0.05 to -0.01
- 0.01 to 0.01
- 0.01 to 0.05
- 0.05 to 0.1
- 0.1 to 0.2
- 0.2 to 0.5
- > 0.5

Figure M13.11

Notes:
 1. Coordinate System: GDA 1994 MGA Zone 56

References:
 1. Base data supplied by NSW SS and Esri
 2. Aerial imagery supplied by MetroMap
 3. Cadastre (2015) supplied by PCC



Scale at A3 1:5,000





Sensitivity Analysis SS6
 Increase in Tailwater Level
 +0.3m FFA 1% AEP Peak
 Flood Level Difference Plot

Parramatta River Flood Study
 Project Code: 59916074
 Drawn By: AS
 Map: 59916074-GS-063-
 1p_SensitivityIncTailwater_WLD_5k.mxd
 Rev: 07
 Date: 2023-06-19

Study Area

Watercourse

Cadastre

Building Footprint

Tufflow Model Extent

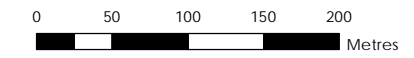
TW+0.3m less Design FFA 1% Water Level Difference (m)

- Was Wet Now Dry
- Was Dry Now Wet
- < -0.5
- 0.5 to -0.2
- 0.2 to -0.1
- 0.1 to -0.05
- 0.05 to -0.01
- 0.01 to 0.01
- 0.01 to 0.05
- 0.05 to 0.1
- 0.1 to 0.2
- 0.2 to 0.5
- > 0.5

Figure M13.12

Notes:
 1. Coordinate System: GDA 1994 MGA Zone 56

References:
 1. Base data supplied by NSW SS and Esri
 2. Aerial imagery supplied by MetroMap
 3. Cadastre (2015) supplied by PCC



Scale at A3 1:5,000





Sensitivity Analysis SS6
 Increase in Tailwater Level
 +0.3m FFA 1% AEP Peak
 Flood Level Difference Plot

Parramatta River Flood Study
 Project Code: 59916074
 Drawn By: AS
 Map: 59916074-GS-063-
 1p_SensitivityIncTailwater_WLD_5k.mxd
 Rev: 07
 Date: 2023-06-19

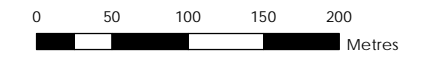
- Study Area
- Watercourse
- Cadastre
- Building Footprint
- Tuflow Model Extent

TW+0.3m less Design FFA 1% Water Level Difference (m)

- Was Wet Now Dry
- Was Dry Now Wet
- < -0.5
- 0.5 to -0.2
- 0.2 to -0.1
- 0.1 to -0.05
- 0.05 to -0.01
- 0.01 to 0.01
- 0.01 to 0.05
- 0.05 to 0.1
- 0.1 to 0.2
- 0.2 to 0.5
- > 0.5

Figure M13.13

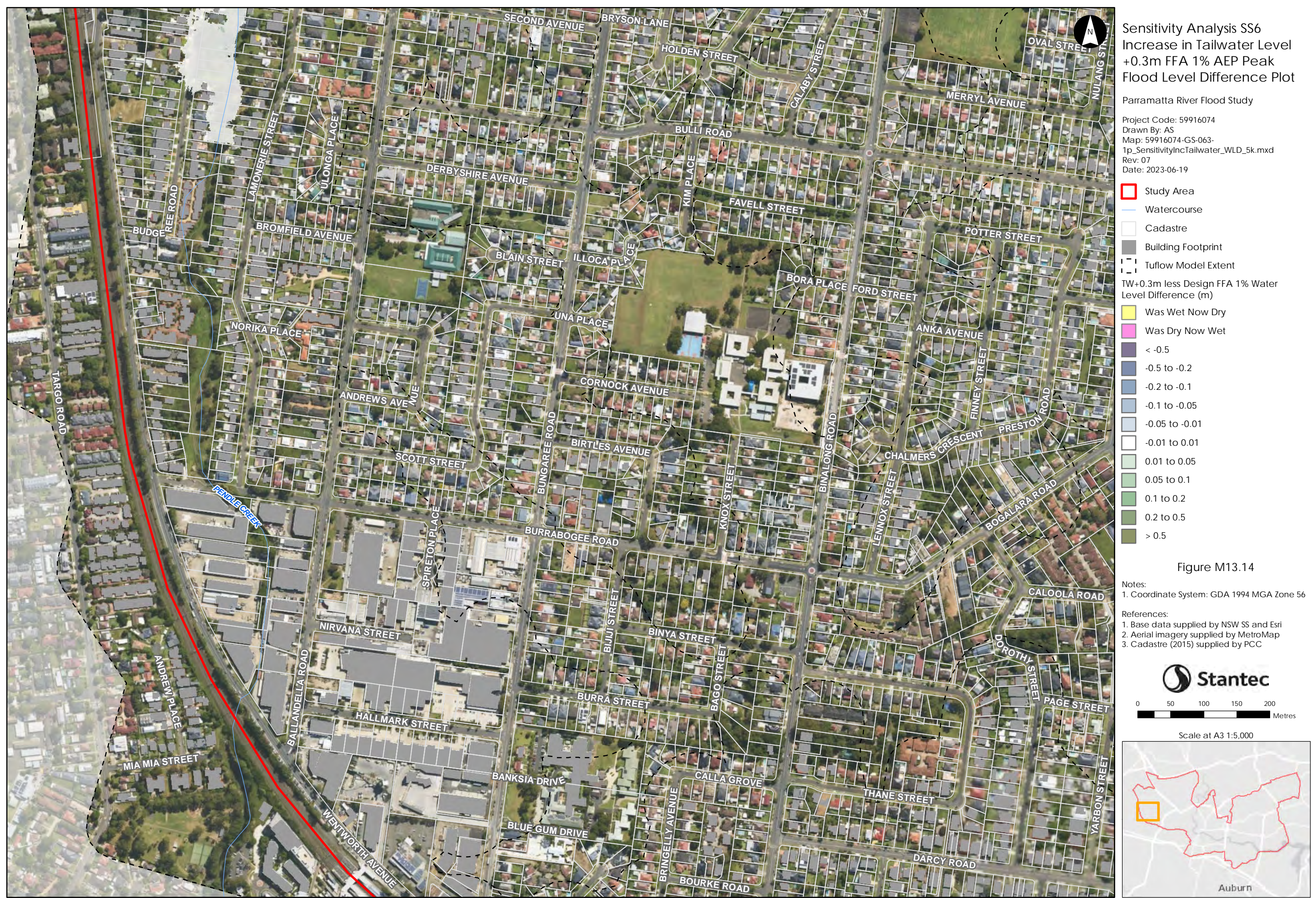
- Notes:
- Coordinate System: GDA 1994 MGA Zone 56
- References:
- Base data supplied by NSW SS and Esri
 - Aerial imagery supplied by MetroMap
 - Cadastre (2015) supplied by PCC



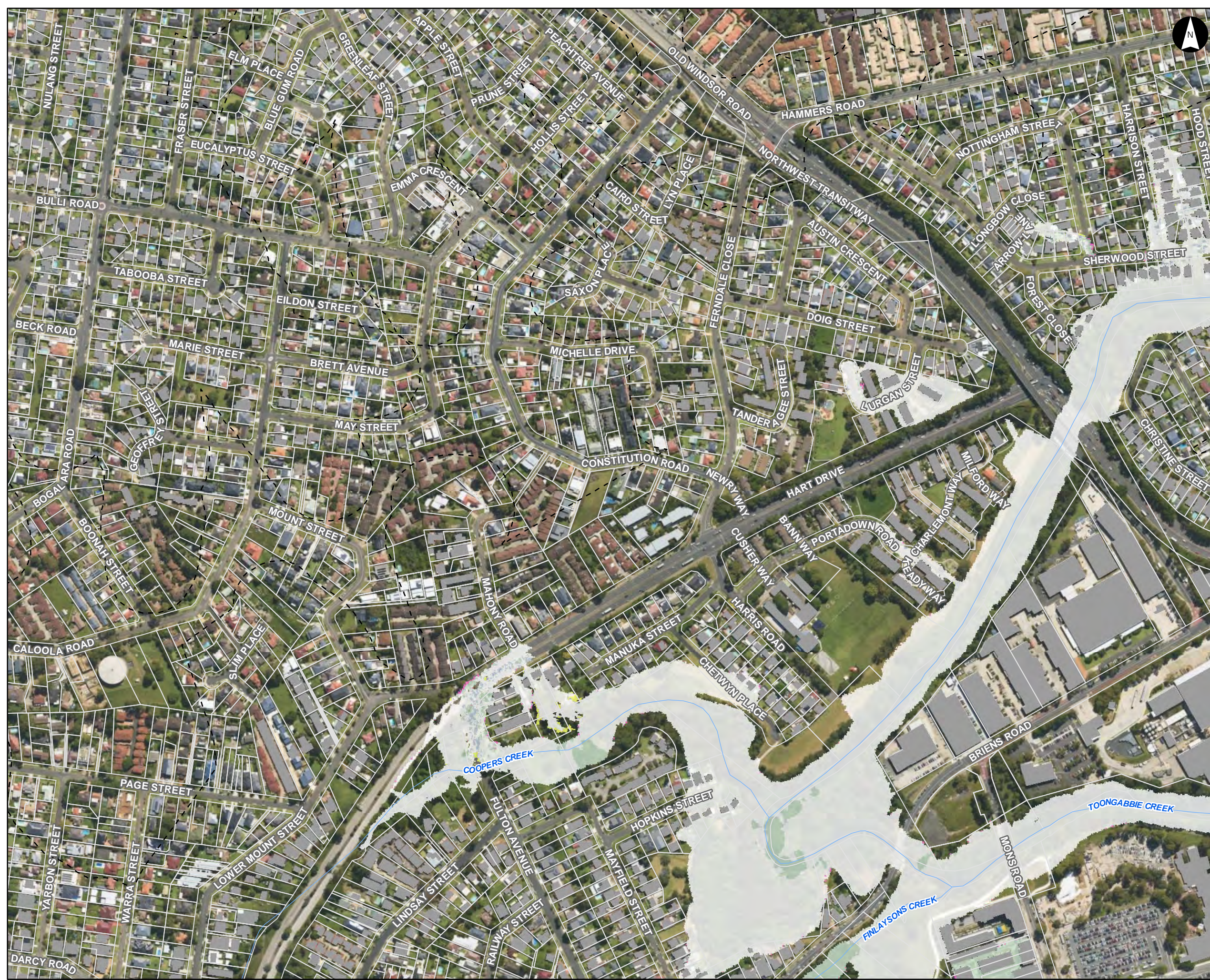
Scale at A3 1:5,000



This document has been prepared based on information provided by others as cited in the data sources. Stantec has not verified the accuracy and/or completeness of this information and shall not be responsible for any errors or omissions which may be incorporated herein as a result. Stantec assumes no responsibility for data supplied in electronic format, and the recipient accepts full responsibility for verifying the accuracy and completeness of the data.



This document has been prepared based on information provided by others as cited in the data sources. Stantec has not verified the accuracy and/or completeness of this information and shall not be responsible for any errors or omissions which may be incorporated herein as a result. Stantec assumes no responsibility for data supplied in electronic format, and the recipient accepts full responsibility for verifying the accuracy and completeness of the data.



Sensitivity Analysis SS6
 Increase in Tailwater Level
 +0.3m FFA 1% AEP Peak
 Flood Level Difference Plot

Parramatta River Flood Study
 Project Code: 59916074
 Drawn By: AS
 Map: 59916074-GS-063-
 1p_SensitivityIncTailwater_WLD_5k.mxd
 Rev: 07
 Date: 2023-06-19

- Study Area
- Watercourse
- Cadastre
- Building Footprint
- Tuflow Model Extent

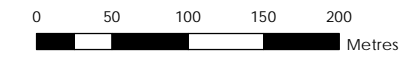
TW+0.3m less Design FFA 1% Water Level Difference (m)

- Was Wet Now Dry
- Was Dry Now Wet
- < -0.5
- 0.5 to -0.2
- 0.2 to -0.1
- 0.1 to -0.05
- 0.05 to -0.01
- 0.01 to 0.01
- 0.01 to 0.05
- 0.05 to 0.1
- 0.1 to 0.2
- 0.2 to 0.5
- > 0.5

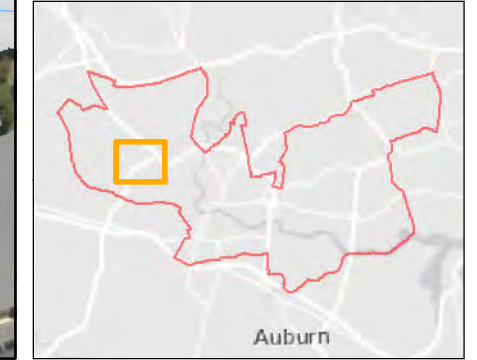
Figure M13.15

Notes:
 1. Coordinate System: GDA 1994 MGA Zone 56

References:
 1. Base data supplied by NSW SS and Esri
 2. Aerial imagery supplied by MetroMap
 3. Cadastre (2015) supplied by PCC



Scale at A3 1:5,000



This document has been prepared based on information provided by others as cited in the data sources. Stantec has not verified the accuracy and/or completeness of this information and shall not be responsible for any errors or omissions which may be incorporated herein as a result. Stantec assumes no responsibility for data supplied in electronic format, and the recipient accepts full responsibility for verifying the accuracy and completeness of the data.



This document has been prepared based on information provided by others as cited in the data sources. Stantec has not verified the accuracy and/or completeness of this information and shall not be responsible for any errors or omissions which may be incorporated herein as a result. Stantec assumes no responsibility for data supplied in electronic format, and the recipient accepts full responsibility for verifying the accuracy and completeness of the data.



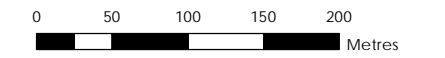
Sensitivity Analysis SS6
Increase in Tailwater Level
+0.3m FFA 1% AEP Peak
Flood Level Difference Plot

Parramatta River Flood Study
Project Code: 59916074
Drawn By: AS
Map: 59916074-GS-063-
1p_SensitivityIncTailwater_WLD_5k.mxd
Rev: 07
Date: 2023-06-19

- Study Area
- Watercourse
- Cadastre
- Building Footprint
- Tuflow Model Extent
- TW+0.3m less Design FFA 1% Water Level Difference (m)
 - Was Wet Now Dry
 - Was Dry Now Wet
 - < -0.5
 - 0.5 to -0.2
 - 0.2 to -0.1
 - 0.1 to -0.05
 - 0.05 to -0.01
 - 0.01 to 0.01
 - 0.01 to 0.05
 - 0.05 to 0.1
 - 0.1 to 0.2
 - 0.2 to 0.5
 - > 0.5

Figure M13.17

- Notes:
1. Coordinate System: GDA 1994 MGA Zone 56
- References:
1. Base data supplied by NSW SS and Esri
 2. Aerial imagery supplied by MetroMap
 3. Cadastre (2015) supplied by PCC



Scale at A3 1:5,000





Sensitivity Analysis SS6
 Increase in Tailwater Level
 +0.3m FFA 1% AEP Peak
 Flood Level Difference Plot

Parramatta River Flood Study
 Project Code: 59916074
 Drawn By: AS
 Map: 59916074-GS-063-
 1p_SensitivityIncTailwater_WLD_5k.mxd
 Rev: 07
 Date: 2023-06-19

Legend

- Study Area
- Watercourse
- Cadastre
- Building Footprint
- Tuflow Model Extent

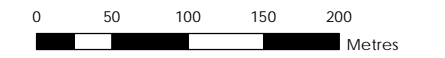
TW+0.3m less Design FFA 1% Water Level Difference (m)

- Was Wet Now Dry
- Was Dry Now Wet
- < -0.5
- 0.5 to -0.2
- 0.2 to -0.1
- 0.1 to -0.05
- 0.05 to -0.01
- 0.01 to 0.01
- 0.01 to 0.05
- 0.05 to 0.1
- 0.1 to 0.2
- 0.2 to 0.5
- > 0.5

Figure M13.18

Notes:
 1. Coordinate System: GDA 1994 MGA Zone 56

References:
 1. Base data supplied by NSW SS and Esri
 2. Aerial imagery supplied by MetroMap
 3. Cadastre (2015) supplied by PCC



Scale at A3 1:5,000



This document has been prepared based on information provided by others as cited in the data sources. Stantec has not verified the accuracy and/or completeness of this information and shall not be responsible for any errors or omissions which may be incorporated herein as a result. Stantec assumes no responsibility for data supplied in electronic format, and the recipient accepts full responsibility for verifying the accuracy and completeness of the data.



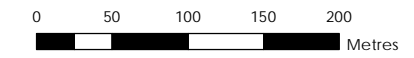
Sensitivity Analysis SS6
 Increase in Tailwater Level
 +0.3m FFA 1% AEP Peak
 Flood Level Difference Plot

Parramatta River Flood Study
 Project Code: 59916074
 Drawn By: AS
 Map: 59916074-GS-063-
 1p_SensitivityIncTailwater_WLD_5k.mxd
 Rev: 07
 Date: 2023-06-19

- Study Area
 - Watercourse
 - Cadastre
 - Building Footprint
 - Tuflow Model Extent
- TW+0.3m less Design FFA 1% Water Level Difference (m)
- Was Wet Now Dry
 - Was Dry Now Wet
 - < -0.5
 - 0.5 to -0.2
 - 0.2 to -0.1
 - 0.1 to -0.05
 - 0.05 to -0.01
 - 0.01 to 0.01
 - 0.01 to 0.05
 - 0.05 to 0.1
 - 0.1 to 0.2
 - 0.2 to 0.5
 - > 0.5

Figure M13.19

- Notes:
- Coordinate System: GDA 1994 MGA Zone 56
- References:
- Base data supplied by NSW SS and Esri
 - Aerial imagery supplied by MetroMap
 - Cadastre (2015) supplied by PCC



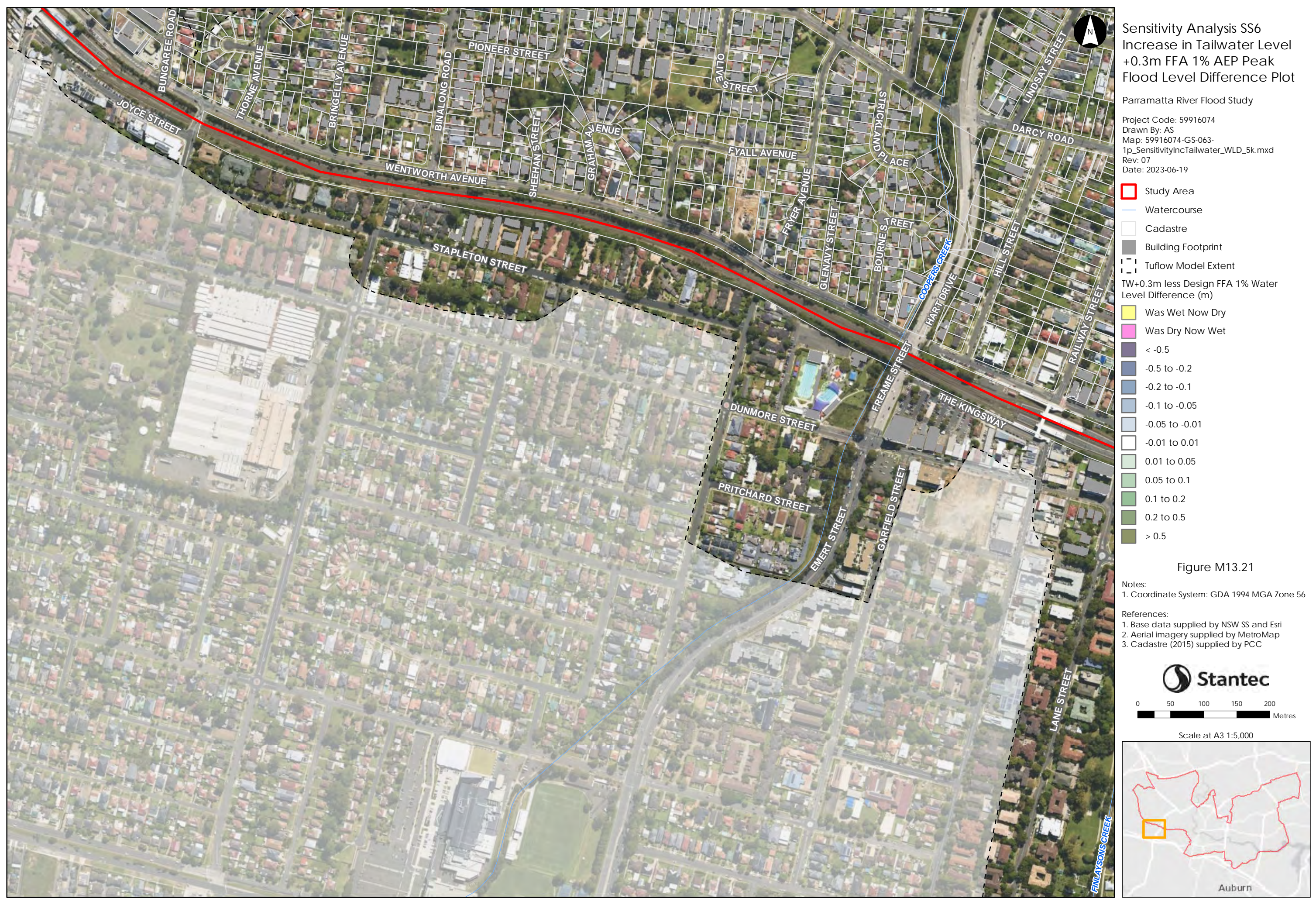
Scale at A3 1:5,000



This document has been prepared based on information provided by others as cited in the data sources. Stantec has not verified the accuracy and/or completeness of this information and shall not be responsible for any errors or omissions which may be incorporated herein as a result. Stantec assumes no responsibility for data supplied in electronic format, and the recipient accepts full responsibility for verifying the accuracy and completeness of the data.



This document has been prepared based on information provided by others as cited in the data sources. Stantec has not verified the accuracy and/or completeness of this information and shall not be responsible for any errors or omissions which may be incorporated herein as a result. Stantec assumes no responsibility for data supplied in electronic format, and the recipient accepts full responsibility for verifying the accuracy and completeness of the data.





Sensitivity Analysis SS6
Increase in Tailwater Level
+0.3m FFA 1% AEP Peak
Flood Level Difference Plot

Parramatta River Flood Study
 Project Code: 59916074
 Drawn By: AS
 Map: 59916074-GS-063-
 1p_SensitivityIncTailwater_WLD_5k.mxd
 Rev: 07
 Date: 2023-06-19

Study Area

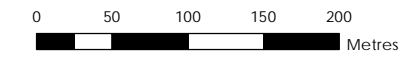
- Watercourse
- Cadastre
- Building Footprint
- Tuflow Model Extent

TW+0.3m less Design FFA 1% Water Level Difference (m)

- Was Wet Now Dry
- Was Dry Now Wet
- < -0.5
- 0.5 to -0.2
- 0.2 to -0.1
- 0.1 to -0.05
- 0.05 to -0.01
- 0.01 to 0.01
- 0.01 to 0.05
- 0.05 to 0.1
- 0.1 to 0.2
- 0.2 to 0.5
- > 0.5

Figure M13.22

- Notes:
- Coordinate System: GDA 1994 MGA Zone 56
- References:
- Base data supplied by NSW SS and Esri
 - Aerial imagery supplied by MetroMap
 - Cadastre (2015) supplied by PCC



Scale at A3 1:5,000



This document has been prepared based on information provided by others as cited in the data sources. Stantec has not verified the accuracy and/or completeness of this information and shall not be responsible for any errors or omissions which may be incorporated herein as a result. Stantec assumes no responsibility for data supplied in electronic format, and the recipient accepts full responsibility for verifying the accuracy and completeness of the data.



This document has been prepared based on information provided by others as cited in the data sources. Stantec has not verified the accuracy and/or completeness of this information and shall not be responsible for any errors or omissions which may be incorporated herein as a result. Stantec assumes no responsibility for data supplied in electronic format, and the recipient accepts full responsibility for verifying the accuracy and completeness of the data.





Sensitivity Analysis SS6
Increase in Tailwater Level
+0.3m FFA 1% AEP Peak
Flood Level Difference Plot

Parramatta River Flood Study
Project Code: 59916074
Drawn By: AS
Map: 59916074-GS-063-
1p_SensitivityIncTailwater_WLD_5k.mxd
Rev: 07
Date: 2023-06-19

Study Area
 Watercourse
 Cadastre
 Building Footprint
 Tufflow Model Extent

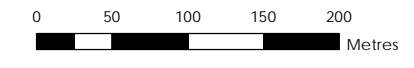
TW+0.3m less Design FFA 1% Water Level Difference (m)

- Was Wet Now Dry
- Was Dry Now Wet
- < -0.5
- 0.5 to -0.2
- 0.2 to -0.1
- 0.1 to -0.05
- 0.05 to -0.01
- 0.01 to 0.01
- 0.01 to 0.05
- 0.05 to 0.1
- 0.1 to 0.2
- 0.2 to 0.5
- > 0.5

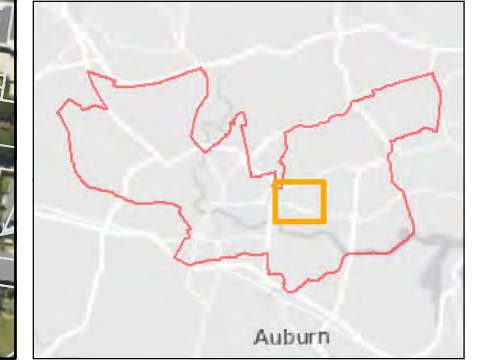
Figure M13.25

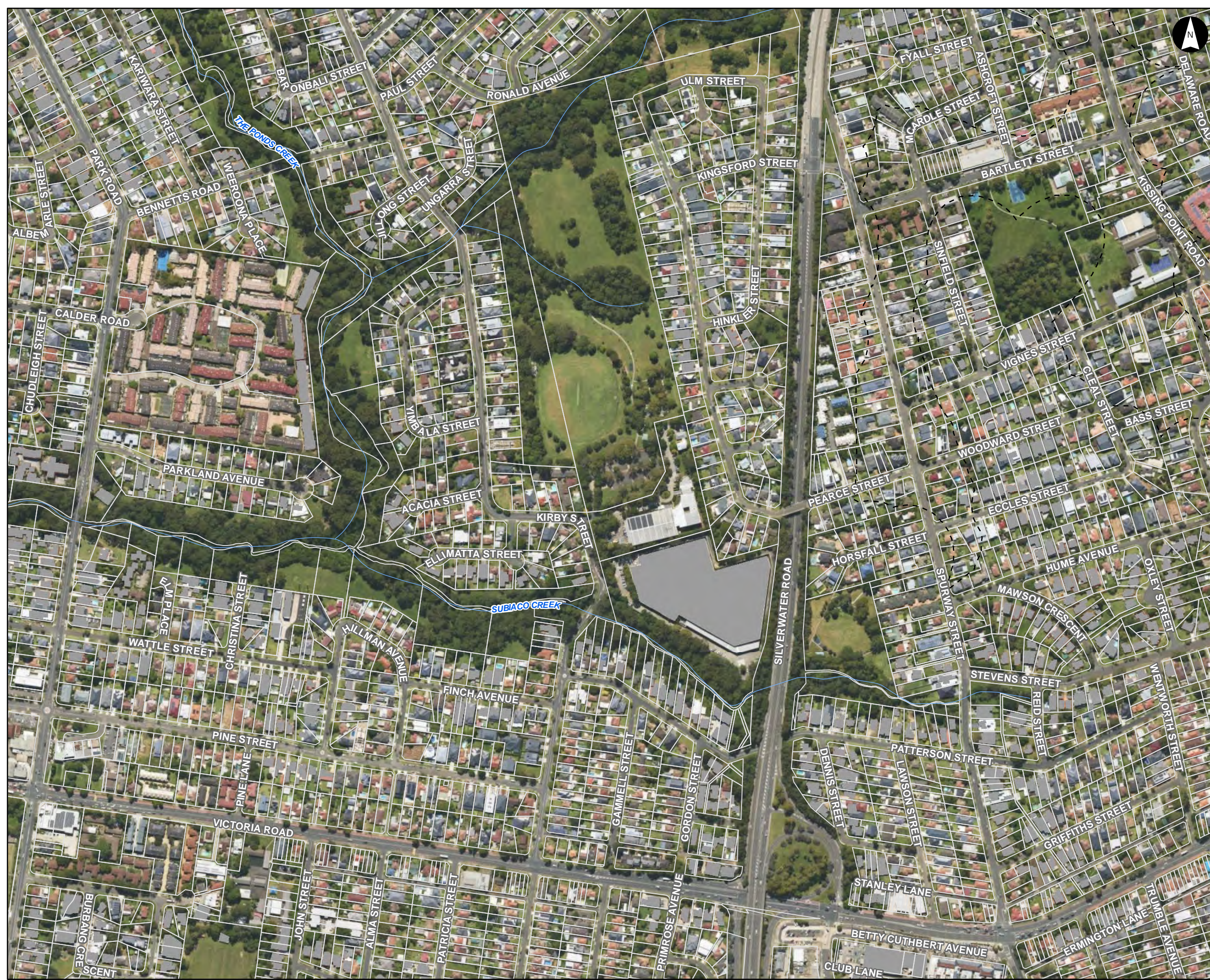
Notes:
1. Coordinate System: GDA 1994 MGA Zone 56

References:
1. Base data supplied by NSW SS and Esri
2. Aerial imagery supplied by MetroMap
3. Cadastre (2015) supplied by PCC



Scale at A3 1:5,000





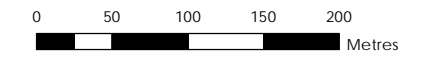
Sensitivity Analysis SS6
Increase in Tailwater Level
+0.3m FFA 1% AEP Peak
Flood Level Difference Plot

Parramatta River Flood Study
Project Code: 59916074
Drawn By: AS
Map: 59916074-GS-063-
1p_SensitivityIncTailwater_WLD_5k.mxd
Rev: 07
Date: 2023-06-19

- Study Area
- Watercourse
- Cadastral
- Building Footprint
- Tuflow Model Extent
- TW+0.3m less Design FFA 1% Water Level Difference (m)
 - Was Wet Now Dry
 - Was Dry Now Wet
 - <math>< -0.5 </math>
 - 0.5 to -0.2
 - 0.2 to -0.1
 - 0.1 to -0.05
 - 0.05 to -0.01
 - 0.01 to 0.01
 - 0.01 to 0.05
 - 0.05 to 0.1
 - 0.1 to 0.2
 - 0.2 to 0.5
 - > 0.5

Figure M13.26

- Notes:
- 1. Coordinate System: GDA 1994 MGA Zone 56
- References:
- 1. Base data supplied by NSW SS and Esri
 - 2. Aerial imagery supplied by MetroMap
 - 3. Cadastral (2015) supplied by PCC



Scale at A3 1:5,000



This document has been prepared based on information provided by others as cited in the data sources. Stantec has not verified the accuracy and/or completeness of this information and shall not be responsible for any errors or omissions which may be incorporated herein as a result. Stantec assumes no responsibility for data supplied in electronic format, and the recipient accepts full responsibility for verifying the accuracy and completeness of the data.



This document has been prepared based on information provided by others as cited in the data sources. Stantec has not verified the accuracy and/or completeness of this information and shall not be responsible for any errors or omissions which may be incorporated herein as a result. Stantec assumes no responsibility for data supplied in electronic format, and the recipient accepts full responsibility for verifying the accuracy and completeness of the data.



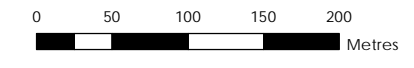
Sensitivity Analysis SS6
 Increase in Tailwater Level
 +0.3m FFA 1% AEP Peak
 Flood Level Difference Plot

Parramatta River Flood Study
 Project Code: 59916074
 Drawn By: AS
 Map: 59916074-GS-063-
 1p_SensitivityIncTailwater_WLD_5k.mxd
 Rev: 07
 Date: 2023-06-19

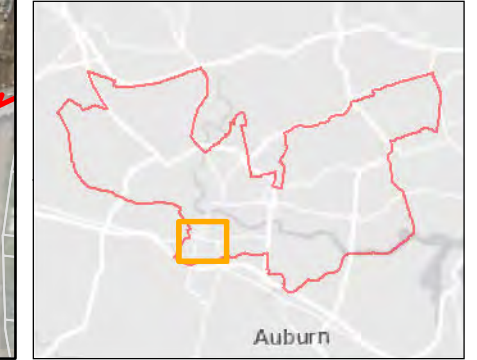
- Study Area
- Watercourse
- Cadastre
- Building Footprint
- Tuflow Model Extent
- TW+0.3m less Design FFA 1% Water Level Difference (m)
- Was Wet Now Dry
- Was Dry Now Wet
- < -0.5
- 0.5 to -0.2
- 0.2 to -0.1
- 0.1 to -0.05
- 0.05 to -0.01
- 0.01 to 0.01
- 0.01 to 0.05
- 0.05 to 0.1
- 0.1 to 0.2
- 0.2 to 0.5
- > 0.5

Figure M13.28

- Notes:
1. Coordinate System: GDA 1994 MGA Zone 56
- References:
1. Base data supplied by NSW SS and Esri
 2. Aerial imagery supplied by MetroMap
 3. Cadastre (2015) supplied by PCC



Scale at A3 1:5,000



This document has been prepared based on information provided by others as cited in the data sources. Stantec has not verified the accuracy and/or completeness of this information and shall not be responsible for any errors or omissions which may be incorporated herein as a result. Stantec assumes no responsibility for data supplied in electronic format, and the recipient accepts full responsibility for verifying the accuracy and completeness of the data.



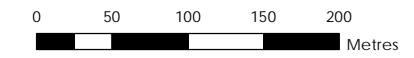
Sensitivity Analysis SS6
 Increase in Tailwater Level
 +0.3m FFA 1% AEP Peak
 Flood Level Difference Plot

Parramatta River Flood Study
 Project Code: 59916074
 Drawn By: AS
 Map: 59916074-GS-063-
 1p_SensitivityIncTailwater_WLD_5k.mxd
 Rev: 07
 Date: 2023-06-19

- Study Area
 - Watercourse
 - Cadastre
 - Building Footprint
 - Tuflow Model Extent
- TW+0.3m less Design FFA 1% Water Level Difference (m)
- Was Wet Now Dry
 - Was Dry Now Wet
 - < -0.5
 - 0.5 to -0.2
 - 0.2 to -0.1
 - 0.1 to -0.05
 - 0.05 to -0.01
 - 0.01 to 0.01
 - 0.01 to 0.05
 - 0.05 to 0.1
 - 0.1 to 0.2
 - 0.2 to 0.5
 - > 0.5

Figure M13.29

- Notes:
- Coordinate System: GDA 1994 MGA Zone 56
- References:
- Base data supplied by NSW SS and Esri
 - Aerial imagery supplied by MetroMap
 - Cadastre (2015) supplied by PCC



Scale at A3 1:5,000





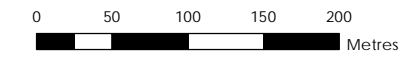
Sensitivity Analysis SS6
Increase in Tailwater Level
+0.3m FFA 1% AEP Peak
Flood Level Difference Plot

Parramatta River Flood Study
Project Code: 59916074
Drawn By: AS
Map: 59916074-GS-063-
1p_SensitivityIncTailwater_WLD_5k.mxd
Rev: 07
Date: 2023-06-19

- Study Area
- Watercourse
- Cadastre
- Building Footprint
- Tufflow Model Extent
- TW+0.3m less Design FFA 1% Water Level Difference (m)
- Was Dry Now Wet
- < -0.5
- 0.5 to -0.2
- 0.2 to -0.1
- 0.1 to -0.05
- 0.05 to -0.01
- 0.01 to 0.01
- 0.01 to 0.05
- 0.05 to 0.1
- 0.1 to 0.2
- 0.2 to 0.5
- > 0.5

Figure M13.30

- Notes:
- Coordinate System: GDA 1994 MGA Zone 56
- References:
- Base data supplied by NSW SS and Esri
 - Aerial imagery supplied by MetroMap
 - Cadastre (2015) supplied by PCC



Scale at A3 1:5,000





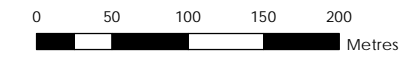
Sensitivity Analysis SS6
 Increase in Tailwater Level
 +0.3m FFA 1% AEP Peak
 Flood Level Difference Plot

Parramatta River Flood Study
 Project Code: 59916074
 Drawn By: AS
 Map: 59916074-GS-063-
 1p_SensitivityIncTailwater_WLD_5k.mxd
 Rev: 07
 Date: 2023-06-19

- Study Area
- Watercourse
- Cadastre
- Building Footprint
- Tufflow Model Extent
- TW+0.3m less Design FFA 1% Water Level Difference (m)
- Was Wet Now Dry
- Was Dry Now Wet
- < -0.5
- 0.5 to -0.2
- 0.2 to -0.1
- 0.1 to -0.05
- 0.05 to -0.01
- 0.01 to 0.01
- 0.01 to 0.05
- 0.05 to 0.1
- 0.1 to 0.2
- 0.2 to 0.5
- > 0.5

Figure M13.31

- Notes:
- Coordinate System: GDA 1994 MGA Zone 56
- References:
- Base data supplied by NSW SS and Esri
 - Aerial imagery supplied by MetroMap
 - Cadastre (2015) supplied by PCC

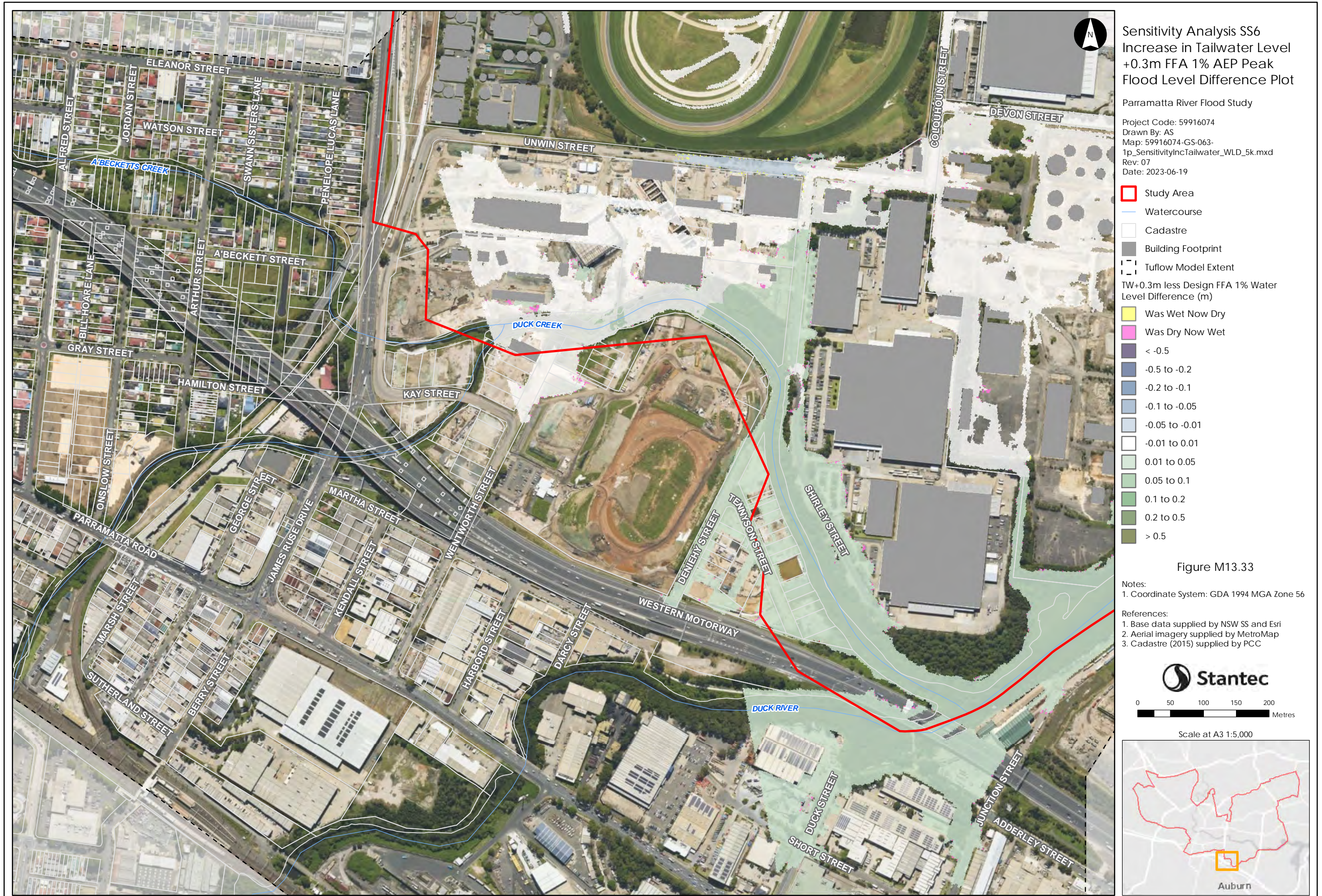


Scale at A3 1:5,000





This document has been prepared based on information provided by others as cited in the data sources. Stantec has not verified the accuracy and/or completeness of this information and shall not be responsible for any errors or omissions which may be incorporated herein as a result. Stantec assumes no responsibility for data supplied in electronic format, and the recipient accepts full responsibility for verifying the accuracy and completeness of the data.



This document has been prepared based on information provided by others as cited in the data sources. Stantec has not verified the accuracy and/or completeness of this information and shall not be responsible for any errors or omissions which may be incorporated herein as a result. Stantec assumes no responsibility for data supplied in electronic format, and the recipient accepts full responsibility for verifying the accuracy and completeness of the data.



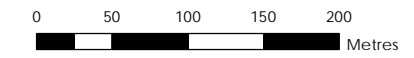
Sensitivity Analysis SS6
 Increase in Tailwater Level
 +0.3m FFA 1% AEP Peak
 Flood Level Difference Plot

Parramatta River Flood Study
 Project Code: 59916074
 Drawn By: AS
 Map: 59916074-GS-063-
 1p_SensitivityIncTailwater_WLD_5k.mxd
 Rev: 07
 Date: 2023-06-19

- Study Area
- Watercourse
- Cadastre
- Building Footprint
- Tuflow Model Extent
- TW+0.3m less Design FFA 1% Water Level Difference (m)
- Was Wet Now Dry
- Was Dry Now Wet
- < -0.5
- 0.5 to -0.2
- 0.2 to -0.1
- 0.1 to -0.05
- 0.05 to -0.01
- 0.01 to 0.01
- 0.01 to 0.05
- 0.05 to 0.1
- 0.1 to 0.2
- 0.2 to 0.5
- > 0.5

Figure M13.34

- Notes:
1. Coordinate System: GDA 1994 MGA Zone 56
- References:
1. Base data supplied by NSW SS and Esri
 2. Aerial imagery supplied by MetroMap
 3. Cadastre (2015) supplied by PCC



Scale at A3 1:5,000

