



This document has been prepared based on information provided by others as cited in the data sources. Stantec has not verified the accuracy and/or completeness of this information and shall not be responsible for any errors or omissions which may be incorporated herein as a result. Stantec assumes no responsibility for data supplied in electronic format, and the recipient accepts full responsibility for verifying the accuracy and completeness of the data.





## Sensitivity Analysis SS5 Blockage of Critical Structures FFA 1% AEP Water Level Difference Plot

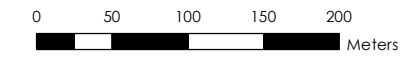
Parramatta River Flood Study

Project Code: 59916074  
Drawn By: AS  
Map: 59916074-GS-088-  
1p\_SelectBlockage\_WLD.mxd  
Rev: 05  
Date: 2023-06-13

- Study Area
- Watercourse
- Cadastre
- Building Footprint
- Tuflow Model Extent
- Select Blockage less Design FFA 1%  
water Level Difference (m)**
- Was Wet Now Dry
- Was Dry Now Wet
- < -0.5
- 0.5 to -0.2
- 0.2 to -0.1
- 0.1 to -0.05
- 0.05 to -0.01
- 0.01 to 0.01
- 0.01 to 0.05
- 0.05 to 0.1
- 0.1 to 0.2
- 0.2 to 0.5
- > 0.5

**Figure M11.2**

- Notes:  
1. Coordinate System: GDA 1994 MGA Zone 56
- References:  
1. Base data supplied by NSW SS and Esri  
2. Aerial imagery supplied by MetroMap  
3. Cadastre (2015) supplied by PCC



Scale at A3 1:5,000



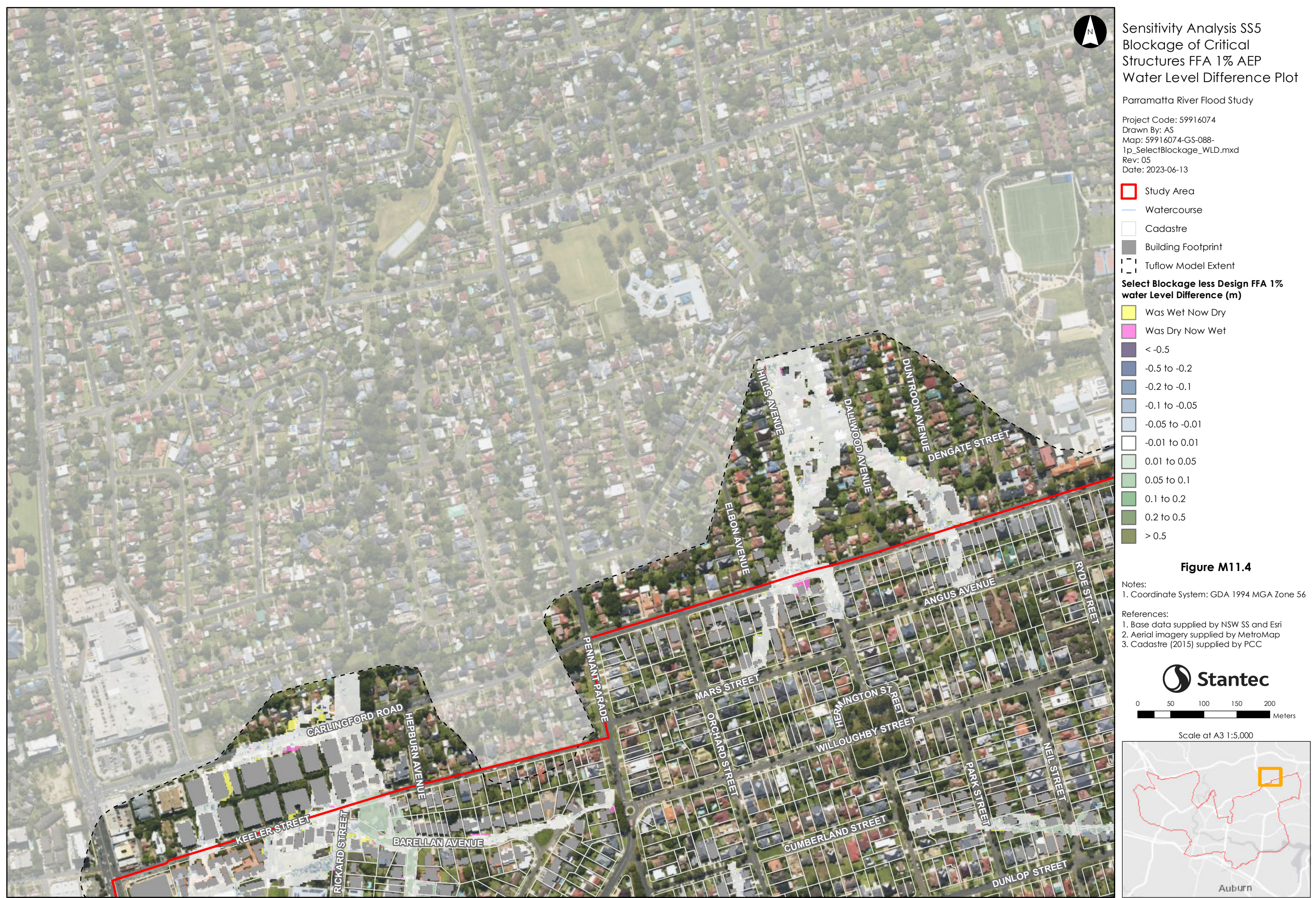
This document has been prepared based on information provided by others as cited in the data sources. Stantec has not verified the accuracy and/or completeness of this information and shall not be responsible for any errors or omissions which may be incorporated herein as a result. Stantec assumes no responsibility for data supplied in electronic format, and the recipient accepts full responsibility for verifying the accuracy and completeness of the data.





This document has been prepared based on information provided by others as cited in the data sources. Stantec has not verified the accuracy and/or completeness of this information and shall not be responsible for any errors or omissions which may be incorporated herein as a result. Stantec assumes no responsibility for data supplied in electronic format, and the recipient accepts full responsibility for verifying the accuracy and completeness of the data.





This document has been prepared based on information provided by others as cited in the data sources. Stantec has not verified the accuracy and/or completeness of this information and shall not be responsible for any errors or omissions which may be incorporated herein as a result. Stantec assumes no responsibility for data supplied in electronic format, and the recipient accepts full responsibility for verifying the accuracy and completeness of the data.





Sensitivity Analysis SS5  
 Blockage of Critical  
 Structures FFA 1% AEP  
 Water Level Difference Plot

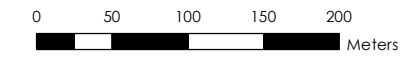
Parramatta River Flood Study

Project Code: 59916074  
 Drawn By: AS  
 Map: 59916074-GS-088-  
 1p\_SelectBlockage\_WLD.mxd  
 Rev: 05  
 Date: 2023-06-13

- Study Area
  - Watercourse
  - Cadastre
  - Building Footprint
  - Tufflow Model Extent
- Select Blockage less Design FFA 1%  
 water Level Difference (m)**
- Was Wet Now Dry
  - Was Dry Now Wet
  - < -0.5
  - 0.5 to -0.2
  - 0.2 to -0.1
  - 0.1 to -0.05
  - 0.05 to -0.01
  - 0.01 to 0.01
  - 0.01 to 0.05
  - 0.05 to 0.1
  - 0.1 to 0.2
  - 0.2 to 0.5
  - > 0.5

**Figure M11.5**

- Notes:
- Coordinate System: GDA 1994 MGA Zone 56
- References:
- Base data supplied by NSW SS and Esri
  - Aerial imagery supplied by MetroMap
  - Cadastre (2015) supplied by PCC



Scale at A3 1:5,000



This document has been prepared based on information provided by others as cited in the data sources. Stantec has not verified the accuracy and/or completeness of this information and shall not be responsible for any errors or omissions which may be incorporated herein as a result. Stantec assumes no responsibility for data supplied in electronic format, and the recipient accepts full responsibility for verifying the accuracy and completeness of the data.





Sensitivity Analysis SS5  
 Blockage of Critical  
 Structures FFA 1% AEP  
 Water Level Difference Plot

Parramatta River Flood Study

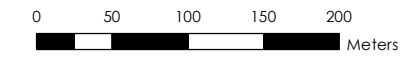
Project Code: 59916074  
 Drawn By: AS  
 Map: 59916074-GS-088-  
 1p\_SelectBlockage\_WLD.mxd  
 Rev: 05  
 Date: 2023-06-13

- Study Area
  - Watercourse
  - Cadastre
  - Building Footprint
  - Tufflow Model Extent
- Select Blockage less Design FFA 1%  
 water Level Difference (m)**
- Was Wet Now Dry
  - Was Dry Now Wet
  - < -0.5
  - 0.5 to -0.2
  - 0.2 to -0.1
  - 0.1 to -0.05
  - 0.05 to -0.01
  - 0.01 to 0.01
  - 0.01 to 0.05
  - 0.05 to 0.1
  - 0.1 to 0.2
  - 0.2 to 0.5
  - > 0.5

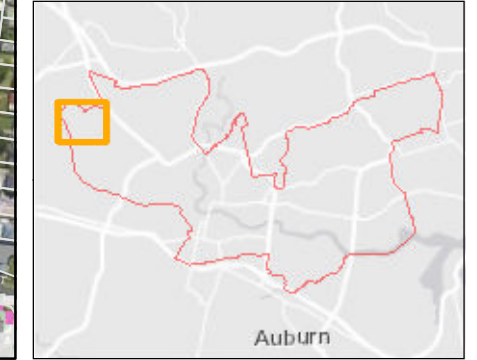
Figure M11.6

Notes:  
 1. Coordinate System: GDA 1994 MGA Zone 56

References:  
 1. Base data supplied by NSW SS and Esri  
 2. Aerial imagery supplied by MetroMap  
 3. Cadastre (2015) supplied by PCC



Scale at A3 1:5,000







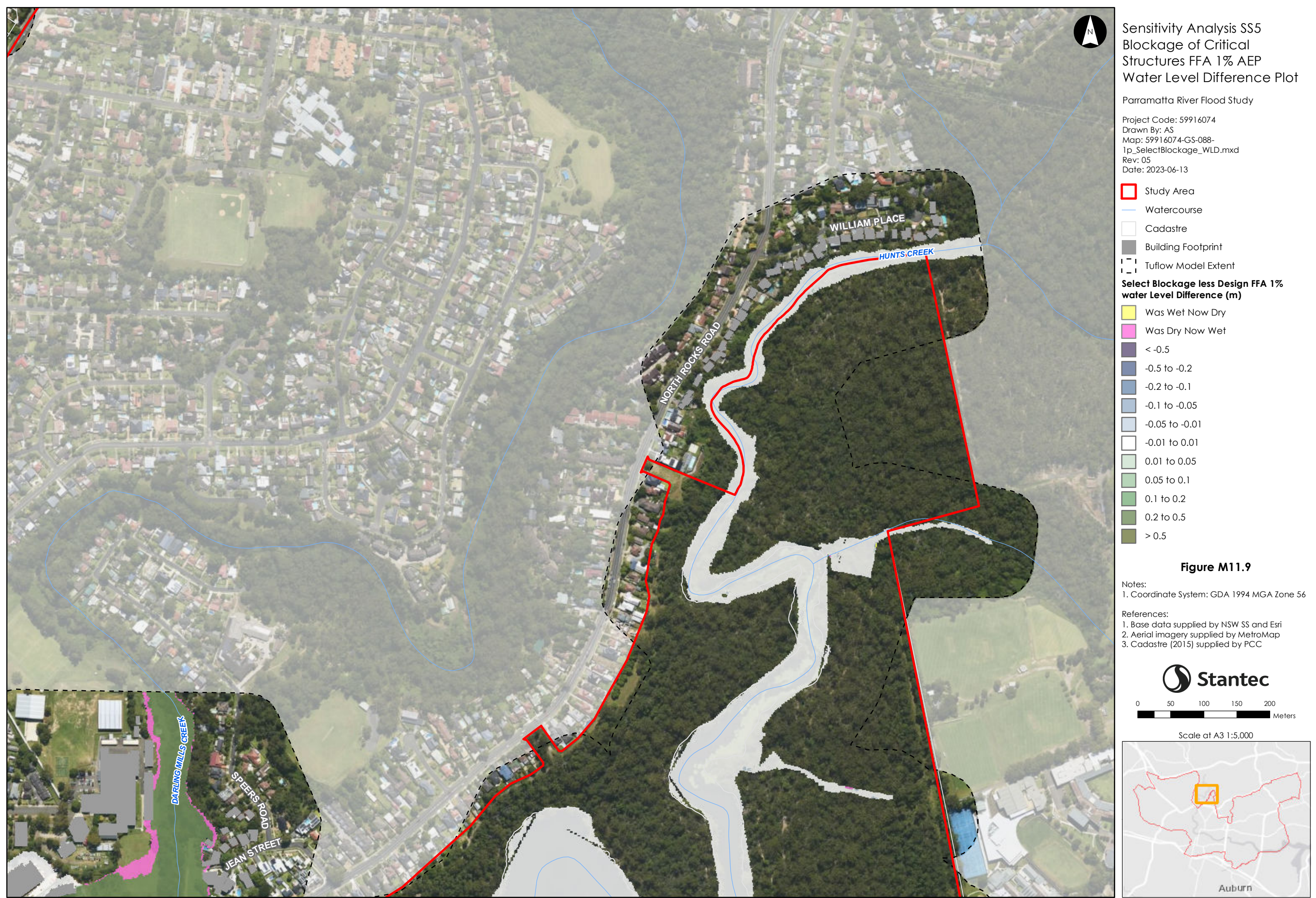
This document has been prepared based on information provided by others as cited in the data sources. Stantec has not verified the accuracy and/or completeness of this information and shall not be responsible for any errors or omissions which may be incorporated herein as a result. Stantec assumes no responsibility for data supplied in electronic format, and the recipient accepts full responsibility for verifying the accuracy and completeness of the data.





This document has been prepared based on information provided by others as cited in the data sources. Stantec has not verified the accuracy and/or completeness of this information and shall not be responsible for any errors or omissions which may be incorporated herein as a result. Stantec assumes no responsibility for data supplied in electronic format, and the recipient accepts full responsibility for verifying the accuracy and completeness of the data.





This document has been prepared based on information provided by others as cited in the data sources. Stantec has not verified the accuracy and/or completeness of this information and shall not be responsible for any errors or omissions which may be incorporated herein as a result. Stantec assumes no responsibility for data supplied in electronic format, and the recipient accepts full responsibility for verifying the accuracy and completeness of the data.





This document has been prepared based on information provided by others as cited in the data sources. Stantec has not verified the accuracy and/or completeness of this information and shall not be responsible for any errors or omissions which may be incorporated herein as a result. Stantec assumes no responsibility for data supplied in electronic format, and the recipient accepts full responsibility for verifying the accuracy and completeness of the data.





Sensitivity Analysis SS5  
 Blockage of Critical  
 Structures FFA 1% AEP  
 Water Level Difference Plot

Parramatta River Flood Study

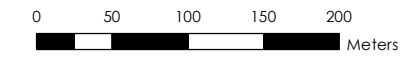
Project Code: 59916074  
 Drawn By: AS  
 Map: 59916074-GS-088-  
 1p\_SelectBlockage\_WLD.mxd  
 Rev: 05  
 Date: 2023-06-13

- Study Area
- Watercourse
- Cadastre
- Building Footprint
- Tuflow Model Extent
- Select Blockage less Design FFA 1%  
water Level Difference (m)**
- Was Wet Now Dry
- Was Dry Now Wet
- <math>-0.5</math>
- 0.5 to -0.2
- 0.2 to -0.1
- 0.1 to -0.05
- 0.05 to -0.01
- 0.01 to 0.01
- 0.01 to 0.05
- 0.05 to 0.1
- 0.1 to 0.2
- 0.2 to 0.5
- > 0.5

**Figure M11.11**

Notes:  
 1. Coordinate System: GDA 1994 MGA Zone 56

References:  
 1. Base data supplied by NSW SS and Esri  
 2. Aerial imagery supplied by MetroMap  
 3. Cadastre (2015) supplied by PCC



Scale at A3 1:5,000



This document has been prepared based on information provided by others as cited in the data sources. Stantec has not verified the accuracy and/or completeness of this information and shall not be responsible for any errors or omissions which may be incorporated herein as a result. Stantec assumes no responsibility for data supplied in electronic format, and the recipient accepts full responsibility for verifying the accuracy and completeness of the data.





Sensitivity Analysis SS5  
 Blockage of Critical  
 Structures FFA 1% AEP  
 Water Level Difference Plot

Parramatta River Flood Study

Project Code: 59916074  
 Drawn By: AS  
 Map: 59916074-GS-088-  
 1p\_SelectBlockage\_WLD.mxd  
 Rev: 05  
 Date: 2023-06-13

- Study Area
- Watercourse
- Cadastre
- Building Footprint
- Tufflow Model Extent

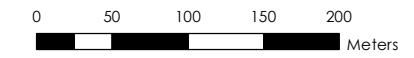
Select Blockage less Design FFA 1%  
 water Level Difference (m)

- Was Wet Now Dry
- Was Dry Now Wet
- <math>-0.5</math>
- <math>-0.5</math> to <math>-0.2</math>
- <math>-0.2</math> to <math>-0.1</math>
- <math>-0.1</math> to <math>-0.05</math>
- <math>-0.05</math> to <math>-0.01</math>
- <math>-0.01</math> to <math>0.01</math>
- <math>0.01</math> to <math>0.05</math>
- <math>0.05</math> to <math>0.1</math>
- <math>0.1</math> to <math>0.2</math>
- <math>0.2</math> to <math>0.5</math>
- > <math>0.5</math>

Figure M11.12

Notes:  
 1. Coordinate System: GDA 1994 MGA Zone 56

- References:
1. Base data supplied by NSW SS and Esri
  2. Aerial imagery supplied by MetroMap
  3. Cadastre (2015) supplied by PCC



Scale at A3 1:5,000



This document has been prepared based on information provided by others as cited in the data sources. Stantec has not verified the accuracy and/or completeness of this information and shall not be responsible for any errors or omissions which may be incorporated herein as a result. Stantec assumes no responsibility for data supplied in electronic format, and the recipient accepts full responsibility for verifying the accuracy and completeness of the data.





This document has been prepared based on information provided by others as cited in the data sources. Stantec has not verified the accuracy and/or completeness of this information and shall not be responsible for any errors or omissions which may be incorporated herein as a result. Stantec assumes no responsibility for data supplied in electronic format, and the recipient accepts full responsibility for verifying the accuracy and completeness of the data.





Sensitivity Analysis SS5  
 Blockage of Critical  
 Structures FFA 1% AEP  
 Water Level Difference Plot

Parramatta River Flood Study

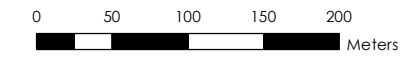
Project Code: 59916074  
 Drawn By: AS  
 Map: 59916074-GS-088-  
 1p\_SelectBlockage\_WLD.mxd  
 Rev: 05  
 Date: 2023-06-13

- Study Area
- Watercourse
- Cadastre
- Building Footprint
- Tuflow Model Extent
- Select Blockage less Design FFA 1%  
water Level Difference (m)**
- Was Wet Now Dry
- Was Dry Now Wet
- < -0.5
- 0.5 to -0.2
- 0.2 to -0.1
- 0.1 to -0.05
- 0.05 to -0.01
- 0.01 to 0.01
- 0.01 to 0.05
- 0.05 to 0.1
- 0.1 to 0.2
- 0.2 to 0.5
- > 0.5

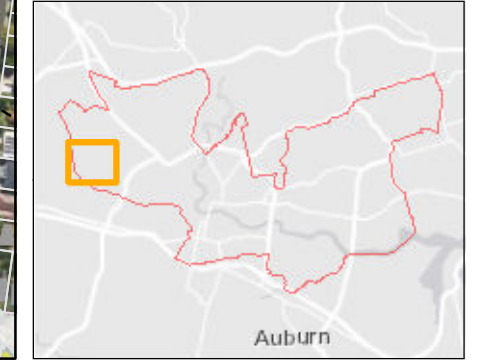
**Figure M11.14**

Notes:  
 1. Coordinate System: GDA 1994 MGA Zone 56

References:  
 1. Base data supplied by NSW SS and Esri  
 2. Aerial imagery supplied by MetroMap  
 3. Cadastre (2015) supplied by PCC



Scale at A3 1:5,000







Sensitivity Analysis SS5  
Blockage of Critical Structures FFA 1% AEP  
Water Level Difference Plot

Parramatta River Flood Study  
Project Code: 59916074  
Drawn By: AS  
Map: 59916074-GS-088-  
1p\_SelectBlockage\_WLD.mxd  
Rev: 05  
Date: 2023-06-13

**Legend**

- Study Area
- Watercourse
- Cadastre
- Building Footprint
- Tuflow Model Extent

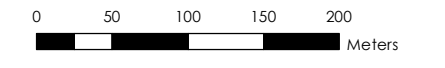
**Select Blockage less Design FFA 1% water Level Difference (m)**

- Was Wet Now Dry
- Was Dry Now Wet
- < -0.5
- 0.5 to -0.2
- 0.2 to -0.1
- 0.1 to -0.05
- 0.05 to -0.01
- 0.01 to 0.01
- 0.01 to 0.05
- 0.05 to 0.1
- 0.1 to 0.2
- 0.2 to 0.5
- > 0.5

Figure M11.15

Notes:  
1. Coordinate System: GDA 1994 MGA Zone 56

References:  
1. Base data supplied by NSW SS and Esri  
2. Aerial imagery supplied by MetroMap  
3. Cadastre (2015) supplied by PCC



Scale at A3 1:5,000







This document has been prepared based on information provided by others as cited in the data sources. Stantec has not verified the accuracy and/or completeness of this information and shall not be responsible for any errors or omissions which may be incorporated herein as a result. Stantec assumes no responsibility for data supplied in electronic format, and the recipient accepts full responsibility for verifying the accuracy and completeness of the data.





## Sensitivity Analysis SS5 Blockage of Critical Structures FFA 1% AEP Water Level Difference Plot

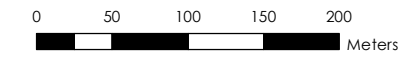
Parramatta River Flood Study

Project Code: 59916074  
Drawn By: AS  
Map: 59916074-GS-088-  
1p\_SelectBlockage\_WLD.mxd  
Rev: 05  
Date: 2023-06-13

- Study Area
- Watercourse
- Cadastre
- Building Footprint
- Tuflow Model Extent
- Select Blockage less Design FFA 1%  
water Level Difference (m)**
- Was Wet Now Dry
- Was Dry Now Wet
- < -0.5
- 0.5 to -0.2
- 0.2 to -0.1
- 0.1 to -0.05
- 0.05 to -0.01
- 0.01 to 0.01
- 0.01 to 0.05
- 0.05 to 0.1
- 0.1 to 0.2
- 0.2 to 0.5
- > 0.5

**Figure M11.17**

- Notes:
- Coordinate System: GDA 1994 MGA Zone 56
- References:
- Base data supplied by NSW SS and Esri
  - Aerial imagery supplied by MetroMap
  - Cadastre (2015) supplied by PCC



Scale at A3 1:5,000



This document has been prepared based on information provided by others as cited in the data sources. Stantec has not verified the accuracy and/or completeness of this information and shall not be responsible for any errors or omissions which may be incorporated herein as a result. Stantec assumes no responsibility for data supplied in electronic format, and the recipient accepts full responsibility for verifying the accuracy and completeness of the data.





Sensitivity Analysis SS5  
 Blockage of Critical  
 Structures FFA 1% AEP  
 Water Level Difference Plot

Parramatta River Flood Study

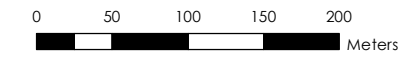
Project Code: 59916074  
 Drawn By: AS  
 Map: 59916074-GS-088-  
 1p\_SelectBlockage\_WLD.mxd  
 Rev: 05  
 Date: 2023-06-13

- Study Area
  - Watercourse
  - Cadastre
  - Building Footprint
  - Tuflow Model Extent
- Select Blockage less Design FFA 1%  
 water Level Difference (m)**
- Was Wet Now Dry
  - Was Dry Now Wet
  - < -0.5
  - 0.5 to -0.2
  - 0.2 to -0.1
  - 0.1 to -0.05
  - 0.05 to -0.01
  - 0.01 to 0.01
  - 0.01 to 0.05
  - 0.05 to 0.1
  - 0.1 to 0.2
  - 0.2 to 0.5
  - > 0.5

**Figure M11.18**

Notes:  
 1. Coordinate System: GDA 1994 MGA Zone 56

References:  
 1. Base data supplied by NSW SS and Esri  
 2. Aerial imagery supplied by MetroMap  
 3. Cadastre (2015) supplied by PCC



Scale at A3 1:5,000



This document has been prepared based on information provided by others as cited in the data sources. Stantec has not verified the accuracy and/or completeness of this information and shall not be responsible for any errors or omissions which may be incorporated herein as a result. Stantec assumes no responsibility for data supplied in electronic format, and the recipient accepts full responsibility for verifying the accuracy and completeness of the data.





Sensitivity Analysis SS5  
 Blockage of Critical Structures FFA 1% AEP  
 Water Level Difference Plot

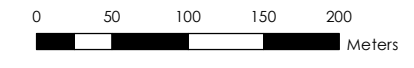
Parramatta River Flood Study  
 Project Code: 59916074  
 Drawn By: AS  
 Map: 59916074-GS-088-  
 1p\_SelectBlockage\_WLD.mxd  
 Rev: 05  
 Date: 2023-06-13

- Study Area
  - Watercourse
  - Cadastre
  - Building Footprint
  - Tufflow Model Extent
- Select Blockage less Design FFA 1%  
 water Level Difference (m)**
- Was Wet Now Dry
  - Was Dry Now Wet
  - < -0.5
  - 0.5 to -0.2
  - 0.2 to -0.1
  - 0.1 to -0.05
  - 0.05 to -0.01
  - 0.01 to 0.01
  - 0.01 to 0.05
  - 0.05 to 0.1
  - 0.1 to 0.2
  - 0.2 to 0.5
  - > 0.5

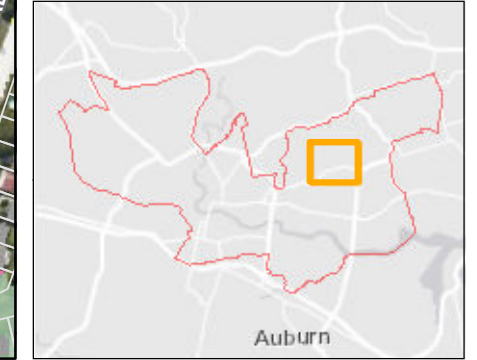
**Figure M11.19**

Notes:  
 1. Coordinate System: GDA 1994 MGA Zone 56

References:  
 1. Base data supplied by NSW SS and Esri  
 2. Aerial imagery supplied by MetroMap  
 3. Cadastre (2015) supplied by PCC



Scale at A3 1:5,000



This document has been prepared based on information provided by others as cited in the data sources. Stantec has not verified the accuracy and/or completeness of this information and shall not be responsible for any errors or omissions which may be incorporated herein as a result. Stantec assumes no responsibility for data supplied in electronic format, and the recipient accepts full responsibility for verifying the accuracy and completeness of the data.





Sensitivity Analysis SS5  
 Blockage of Critical  
 Structures FFA 1% AEP  
 Water Level Difference Plot

Parramatta River Flood Study

Project Code: 59916074  
 Drawn By: AS  
 Map: 59916074-GS-088-  
 1p\_SelectBlockage\_WLD.mxd  
 Rev: 05  
 Date: 2023-06-13

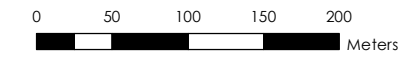
- Study Area
- Watercourse
- Cadastre
- Building Footprint
- Tuflow Model Extent

Select Blockage less Design FFA 1%  
 water Level Difference (m)

- Was Wet Now Dry
- Was Dry Now Wet
- <math>-0.5</math>
- <math>-0.5</math> to <math>-0.2</math>
- <math>-0.2</math> to <math>-0.1</math>
- <math>-0.1</math> to <math>-0.05</math>
- <math>-0.05</math> to <math>-0.01</math>
- <math>-0.01</math> to <math>0.01</math>
- <math>0.01</math> to <math>0.05</math>
- <math>0.05</math> to <math>0.1</math>
- <math>0.1</math> to <math>0.2</math>
- <math>0.2</math> to <math>0.5</math>
- > <math>0.5</math>

**Figure M11.20**

- Notes:
1. Coordinate System: GDA 1994 MGA Zone 56
- References:
1. Base data supplied by NSW SS and Esri
  2. Aerial imagery supplied by MetroMap
  3. Cadastre (2015) supplied by PCC



Scale at A3 1:5,000







Sensitivity Analysis SS5  
 Blockage of Critical Structures FFA 1% AEP  
 Water Level Difference Plot

Parramatta River Flood Study

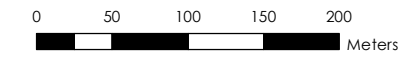
Project Code: 59916074  
 Drawn By: AS  
 Map: 59916074-GS-088-1p\_SelectBlockage\_WLD.mxd  
 Rev: 05  
 Date: 2023-06-13

- Study Area
- Watercourse
- Cadastre
- Building Footprint
- Tuflow Model Extent
- Select Blockage less Design FFA 1% water Level Difference (m)**
- Was Wet Now Dry
- Was Dry Now Wet
- < -0.5
- 0.5 to -0.2
- 0.2 to -0.1
- 0.1 to -0.05
- 0.05 to -0.01
- 0.01 to 0.01
- 0.01 to 0.05
- 0.05 to 0.1
- 0.1 to 0.2
- 0.2 to 0.5
- > 0.5

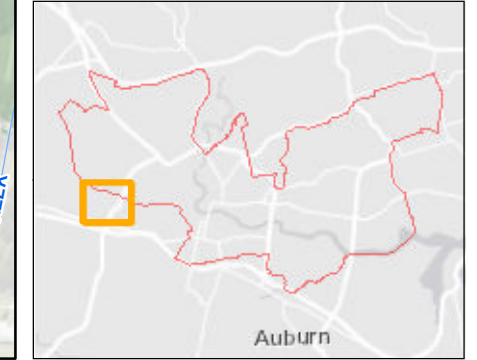
**Figure M11.21**

Notes:  
 1. Coordinate System: GDA 1994 MGA Zone 56

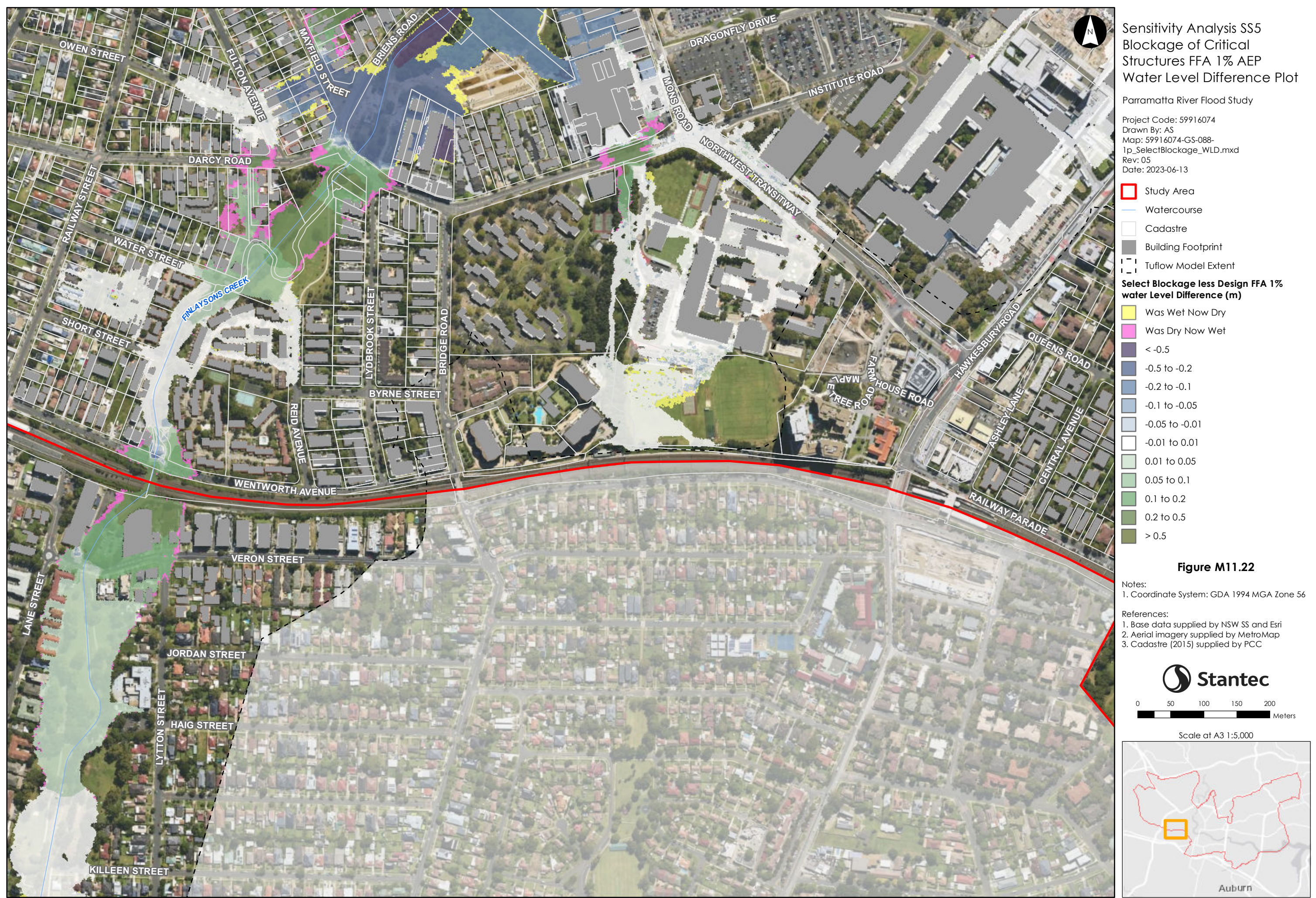
References:  
 1. Base data supplied by NSW SS and Esri  
 2. Aerial imagery supplied by MetroMap  
 3. Cadastre (2015) supplied by PCC



Scale at A3 1:5,000







Sensitivity Analysis SS5  
 Blockage of Critical  
 Structures FFA 1% AEP  
 Water Level Difference Plot

Parramatta River Flood Study

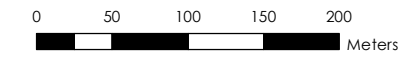
Project Code: 59916074  
 Drawn By: AS  
 Map: 59916074-GS-088-  
 1p\_SelectBlockage\_WLD.mxd  
 Rev: 05  
 Date: 2023-06-13

- Study Area
- Watercourse
- Cadastre
- Building Footprint
- Tulflow Model Extent
- Select Blockage less Design FFA 1%  
water Level Difference (m)**
- Was Wet Now Dry
- Was Dry Now Wet
- < -0.5
- 0.5 to -0.2
- 0.2 to -0.1
- 0.1 to -0.05
- 0.05 to -0.01
- 0.01 to 0.01
- 0.01 to 0.05
- 0.05 to 0.1
- 0.1 to 0.2
- 0.2 to 0.5
- > 0.5

**Figure M11.22**

Notes:  
 1. Coordinate System: GDA 1994 MGA Zone 56

References:  
 1. Base data supplied by NSW SS and Esri  
 2. Aerial imagery supplied by MetroMap  
 3. Cadastre (2015) supplied by PCC



Scale at A3 1:5,000



This document has been prepared based on information provided by others as cited in the data sources. Stantec has not verified the accuracy and/or completeness of this information and shall not be responsible for any errors or omissions which may be incorporated herein as a result. Stantec assumes no responsibility for data supplied in electronic format, and the recipient accepts full responsibility for verifying the accuracy and completeness of the data.





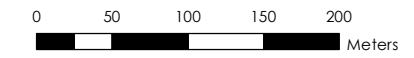
Sensitivity Analysis SS5  
 Blockage of Critical Structures FFA 1% AEP  
 Water Level Difference Plot

Parramatta River Flood Study  
 Project Code: 59916074  
 Drawn By: AS  
 Map: 59916074-GS-088-1p\_SelectBlockage\_WLD.mxd  
 Rev: 05  
 Date: 2023-06-13

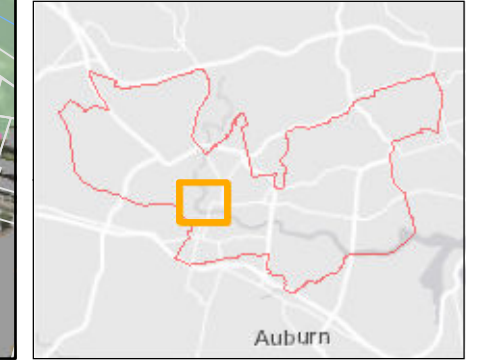
- Study Area
  - Watercourse
  - Cadastre
  - Building Footprint
  - Tufflow Model Extent
- Select Blockage less Design FFA 1% water Level Difference (m)**
- Was Wet Now Dry
  - Was Dry Now Wet
  - < -0.5
  - 0.5 to -0.2
  - 0.2 to -0.1
  - 0.1 to -0.05
  - 0.05 to -0.01
  - 0.01 to 0.01
  - 0.01 to 0.05
  - 0.05 to 0.1
  - 0.1 to 0.2
  - 0.2 to 0.5
  - > 0.5

Figure M11.23

- Notes:
1. Coordinate System: GDA 1994 MGA Zone 56
- References:
1. Base data supplied by NSW SS and Esri
  2. Aerial imagery supplied by MetroMap
  3. Cadastre (2015) supplied by PCC



Scale at A3 1:5,000











Sensitivity Analysis SS5  
 Blockage of Critical Structures FFA 1% AEP  
 Water Level Difference Plot

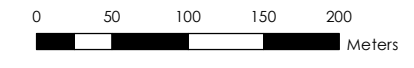
Parramatta River Flood Study  
 Project Code: 59916074  
 Drawn By: AS  
 Map: 59916074-GS-088-1p\_SelectBlockage\_WLD.mxd  
 Rev: 05  
 Date: 2023-06-13

- Study Area
  - Watercourse
  - Cadastre
  - Building Footprint
  - Tufflow Model Extent
- Select Blockage less Design FFA 1% water Level Difference (m)**
- Was Wet Now Dry
  - Was Dry Now Wet
  - < -0.5
  - 0.5 to -0.2
  - 0.2 to -0.1
  - 0.1 to -0.05
  - 0.05 to -0.01
  - 0.01 to 0.01
  - 0.01 to 0.05
  - 0.05 to 0.1
  - 0.1 to 0.2
  - 0.2 to 0.5
  - > 0.5

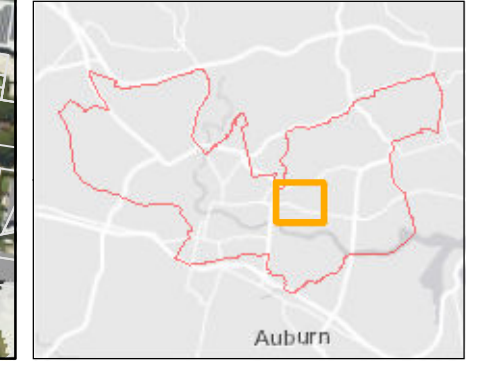
Figure M11.25

Notes:  
 1. Coordinate System: GDA 1994 MGA Zone 56

References:  
 1. Base data supplied by NSW SS and Esri  
 2. Aerial imagery supplied by MetroMap  
 3. Cadastre (2015) supplied by PCC



Scale at A3 1:5,000



This document has been prepared based on information provided by others as cited in the data sources. Stantec has not verified the accuracy and/or completeness of this information and shall not be responsible for any errors or omissions which may be incorporated herein as a result. Stantec assumes no responsibility for data supplied in electronic format, and the recipient accepts full responsibility for verifying the accuracy and completeness of the data.





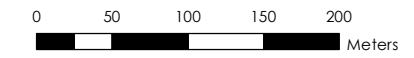
Sensitivity Analysis SS5  
 Blockage of Critical Structures FFA 1% AEP  
 Water Level Difference Plot

Parramatta River Flood Study  
 Project Code: 59916074  
 Drawn By: AS  
 Map: 59916074-GS-088-  
 1p\_SelectBlockage\_WLD.mxd  
 Rev: 05  
 Date: 2023-06-13

- Study Area
  - Watercourse
  - Cadastre
  - Building Footprint
  - Tuflow Model Extent
- Select Blockage less Design FFA 1% water Level Difference (m)**
- Was Wet Now Dry
  - Was Dry Now Wet
  - < -0.5
  - 0.5 to -0.2
  - 0.2 to -0.1
  - 0.1 to -0.05
  - 0.05 to -0.01
  - 0.01 to 0.01
  - 0.01 to 0.05
  - 0.05 to 0.1
  - 0.1 to 0.2
  - 0.2 to 0.5
  - > 0.5

**Figure M11.26**

- Notes:
1. Coordinate System: GDA 1994 MGA Zone 56
- References:
1. Base data supplied by NSW SS and Esri
  2. Aerial imagery supplied by MetroMap
  3. Cadastre (2015) supplied by PCC



Scale at A3 1:5,000

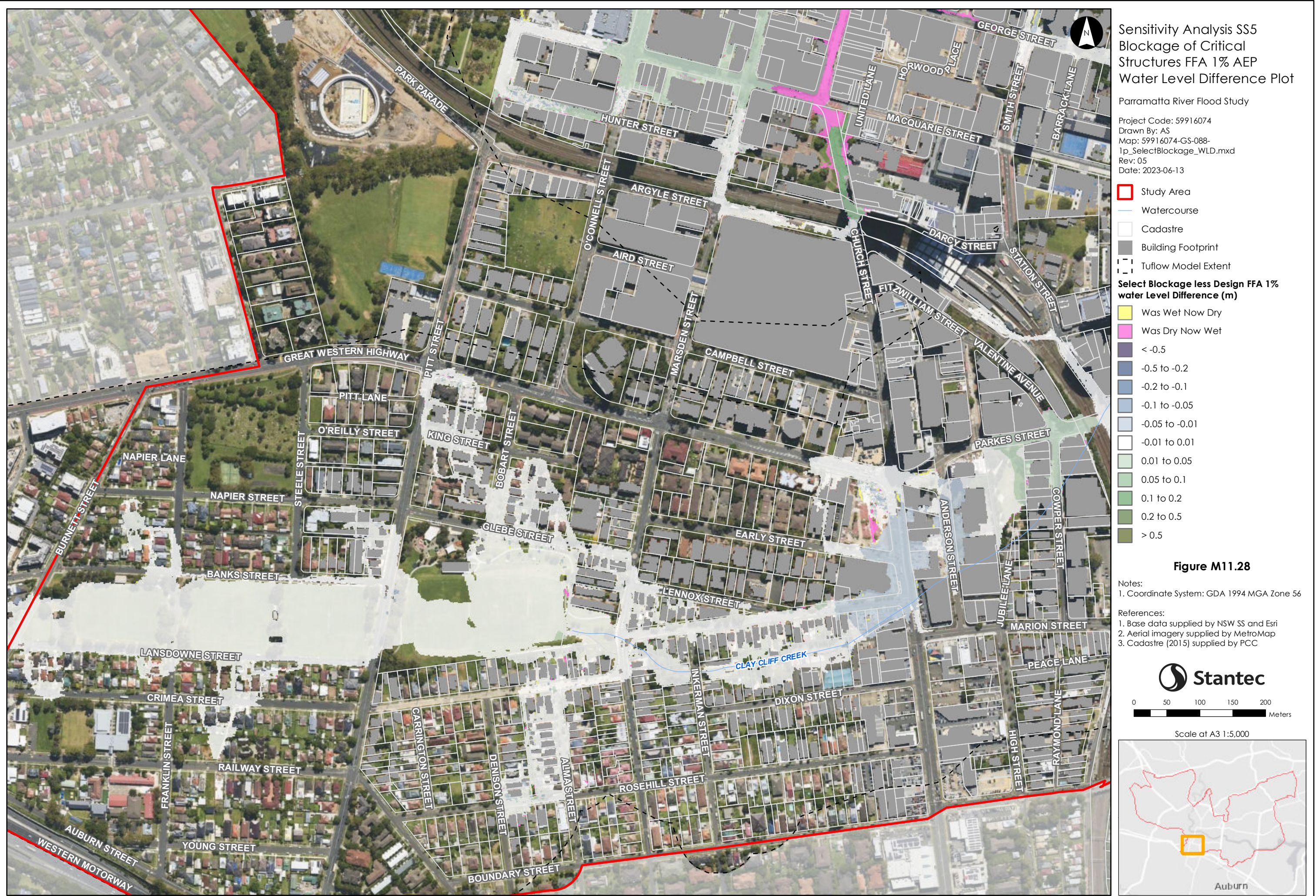


This document has been prepared based on information provided by others as cited in the data sources. Stantec has not verified the accuracy and/or completeness of this information and shall not be responsible for any errors or omissions which may be incorporated herein as a result. Stantec assumes no responsibility for data supplied in electronic format, and the recipient accepts full responsibility for verifying the accuracy and completeness of the data.









This document has been prepared based on information provided by others as cited in the data sources. Stantec has not verified the accuracy and/or completeness of this information and shall not be responsible for any errors or omissions which may be incorporated herein as a result. Stantec assumes no responsibility for data supplied in electronic format, and the recipient accepts full responsibility for verifying the accuracy and completeness of the data.





This document has been prepared based on information provided by others as cited in the data sources. Stantec has not verified the accuracy and/or completeness of this information and shall not be responsible for any errors or omissions which may be incorporated herein as a result. Stantec assumes no responsibility for data supplied in electronic format, and the recipient accepts full responsibility for verifying the accuracy and completeness of the data.





This document has been prepared based on information provided by others as cited in the data sources. Stantec has not verified the accuracy and/or completeness of this information and shall not be responsible for any errors or omissions which may be incorporated herein as a result. Stantec assumes no responsibility for data supplied in electronic format, and the recipient accepts full responsibility for verifying the accuracy and completeness of the data.





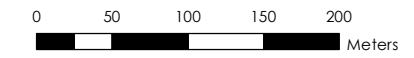
Sensitivity Analysis SS5  
 Blockage of Critical Structures FFA 1% AEP  
 Water Level Difference Plot

Parramatta River Flood Study  
 Project Code: 59916074  
 Drawn By: AS  
 Map: 59916074-GS-088-  
 1p\_SelectBlockage\_WLD.mxd  
 Rev: 05  
 Date: 2023-06-13

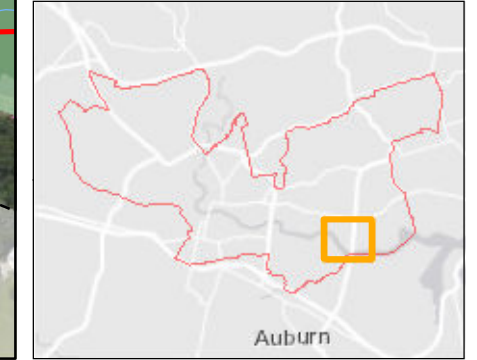
- Study Area
  - Watercourse
  - Cadastre
  - Building Footprint
  - Tufflow Model Extent
- Select Blockage less Design FFA 1% water Level Difference (m)**
- Was Wet Now Dry
  - Was Dry Now Wet
  - <math>-0.5</math>
  - 0.5 to -0.2
  - 0.2 to -0.1
  - 0.1 to -0.05
  - 0.05 to -0.01
  - 0.01 to 0.01
  - 0.01 to 0.05
  - 0.05 to 0.1
  - 0.1 to 0.2
  - 0.2 to 0.5
  - > 0.5

**Figure M11.31**

- Notes:
- Coordinate System: GDA 1994 MGA Zone 56
- References:
- Base data supplied by NSW SS and Esri
  - Aerial imagery supplied by MetroMap
  - Cadastre (2015) supplied by PCC



Scale at A3 1:5,000







Sensitivity Analysis SS5  
 Blockage of Critical  
 Structures FFA 1% AEP  
 Water Level Difference Plot

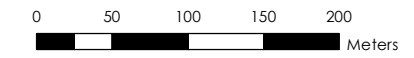
Parramatta River Flood Study

Project Code: 59916074  
 Drawn By: AS  
 Map: 59916074-GS-088-  
 1p\_SelectBlockage\_WLD.mxd  
 Rev: 05  
 Date: 2023-06-13

- Study Area
- Watercourse
- Cadastre
- Building Footprint
- Tufflow Model Extent
- Select Blockage less Design FFA 1%  
water Level Difference (m)**
- Was Wet Now Dry
- Was Dry Now Wet
- < -0.5
- 0.5 to -0.2
- 0.2 to -0.1
- 0.1 to -0.05
- 0.05 to -0.01
- 0.01 to 0.01
- 0.01 to 0.05
- 0.05 to 0.1
- 0.1 to 0.2
- 0.2 to 0.5
- > 0.5

**Figure M11.32**

- Notes:
1. Coordinate System: GDA 1994 MGA Zone 56
- References:
1. Base data supplied by NSW SS and Esri
  2. Aerial imagery supplied by MetroMap
  3. Cadastre (2015) supplied by PCC



Scale at A3 1:5,000







This document has been prepared based on information provided by others as cited in the data sources. Stantec has not verified the accuracy and/or completeness of this information and shall not be responsible for any errors or omissions which may be incorporated herein as a result. Stantec assumes no responsibility for data supplied in electronic format, and the recipient accepts full responsibility for verifying the accuracy and completeness of the data.





Sensitivity Analysis SS5  
 Blockage of Critical  
 Structures FFA 1% AEP  
 Water Level Difference Plot

Parramatta River Flood Study

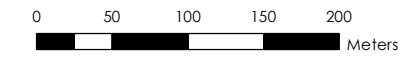
Project Code: 59916074  
 Drawn By: AS  
 Map: 59916074-GS-088-  
 1p\_SelectBlockage\_WLD.mxd  
 Rev: 05  
 Date: 2023-06-13

- Study Area
- Watercourse
- Cadastre
- Building Footprint
- Tuflow Model Extent
- Select Blockage less Design FFA 1%  
water Level Difference (m)**
- Was Wet Now Dry
- Was Dry Now Wet
- < -0.5
- 0.5 to -0.2
- 0.2 to -0.1
- 0.1 to -0.05
- 0.05 to -0.01
- 0.01 to 0.01
- 0.01 to 0.05
- 0.05 to 0.1
- 0.1 to 0.2
- 0.2 to 0.5
- > 0.5

**Figure M11.34**

Notes:  
 1. Coordinate System: GDA 1994 MGA Zone 56

References:  
 1. Base data supplied by NSW SS and Esri  
 2. Aerial imagery supplied by MetroMap  
 3. Cadastre (2015) supplied by PCC



Scale at A3 1:5,000

