

PROPOSED LOCATION

1.1 Existing play spaces

A desktop analysis of the existing play spaces been undertaken within a 1.2km radius of Anna Maria King Park. This analysis was undertaken to further understand what existing play elements are available to the community, who they are targeted towards and the type of play available.

Findings

Findings from the desktop analysis revealed the following:

- There is a high representation of formal, prescribed play equipment.
- Swingsets are the most common play elements, followed by slides.
- Most playspaces cater towards a younger demographic, with less spaces catering to the older child-teen demographic.

LEGEND



Equipment - Slide



Equipment - Swingset



Equipment - Climbing (formal + informal)

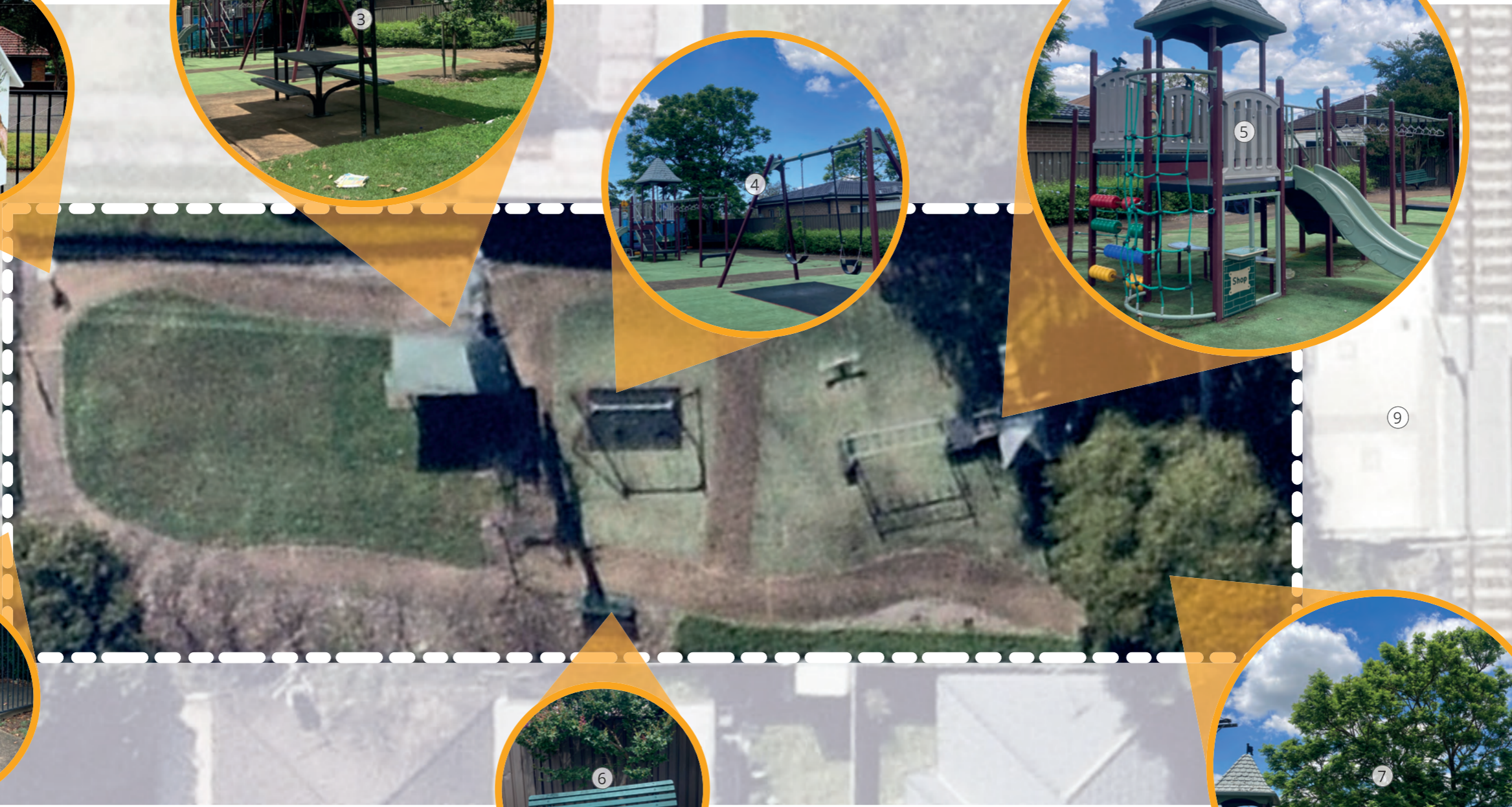
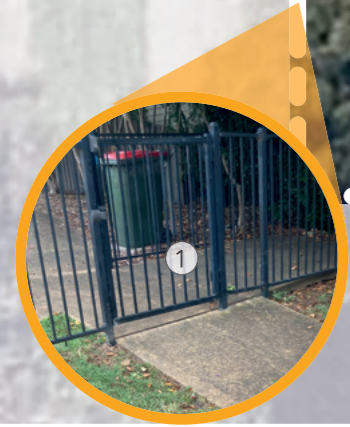


Equipment - Monkey Bars



Equipment - See Saw

RIPPON AVENUE

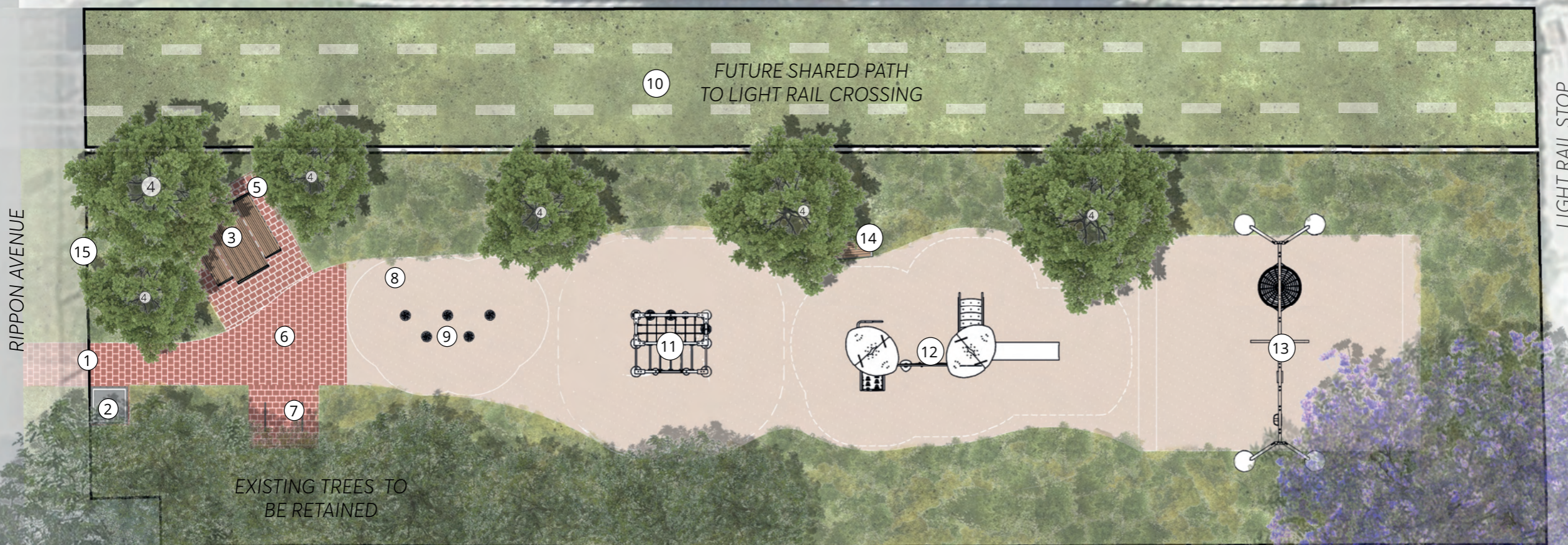


LEGEND

①	Entry, Accessed via latch gate	③	Picnic Table + chair with shelter	⑤	Multiplay with slide and monkey bars	⑦	Feature Jacaranda Tree
②	Street Library	④	Swingset on softfall base	⑥	Standard Park Bench	⑧	Light Rail connection

LEGEND

- ① Entry point into upgraded playground
- ② Proposed bin unit
- ③ Proposed picnic and table seating
- ④ Proposed medium sized [suitable for overhead powerline] native trees for shade
- ⑤ Street Library
- ⑥ Proposed recycled brick surfacing
- ⑦ Proposed bike rack
- ⑧ Proposed rubber soft fall surfacing
- ⑨ Proposed step pods
- ⑩ Allocated grass space for future shared path and cycleway connection to the light rail
- ⑪ Proposed climbing play elements with overhead ladders and varying climbing elements
- ⑫ Proposed play tower with climbing elements, slide and imaginative play
- ⑬ Proposed triple swing with toddler and nest seats
- ⑭ Proposed bench seating
- ⑮ Proposed decorative fencing on the entrance side of playground



YOU SPOKE, WE LISTENED.

Some sort of bar in which some Bodyweight exercise can be performed

Climbing frames and fixed monkey bars.

It would be really good if council made playgrounds that parents can use with their children.....Have swings for one parent and one child

Would be nice to have a swing suitable for younger kids (eg: with a seat belt, and higher back).

What will be the path/access to the light rail crossing? this needs to be accessible to bikes, prams etc.

Will there be access through the park to the Light Rail?

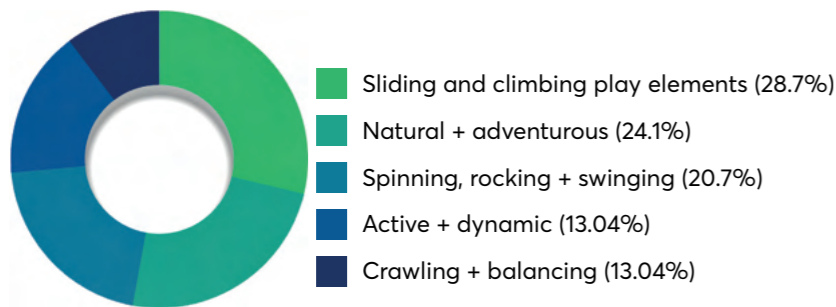
Keep it fenced.

Climbing elements that can be utilised for childrens play and general fitness have been included within the design, creating a flexible fun space!

Great idea! The swing unit chosen is a three seater option, with one suitable for younger kids, adults and a nest seat allowing both to swing on together!

Access to the Light rail has been highly considered with a pathway allowance made. The park will remain as a fenced park with one central exit / entry point for parents and caregivers.

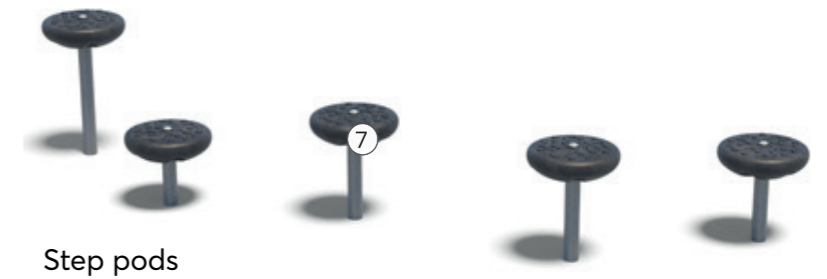
Q: From the following play element categories, please select the option you would most like to see delivered at Anna Maria King ?



PLAY EQUIPMENT SAMPLE IMAGES



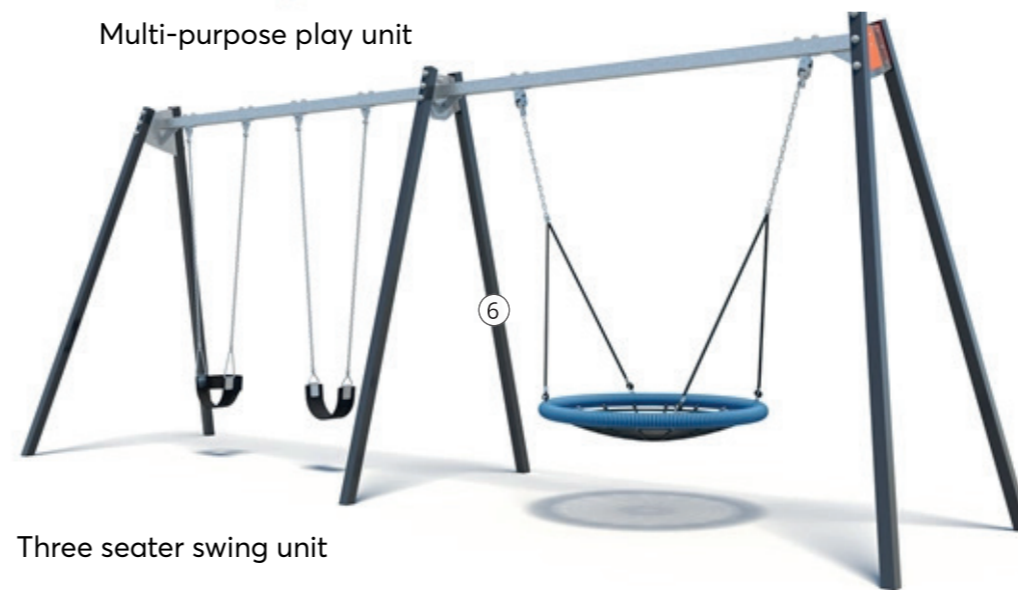
Multi-purpose play unit



Step pods



Compact climbing unit



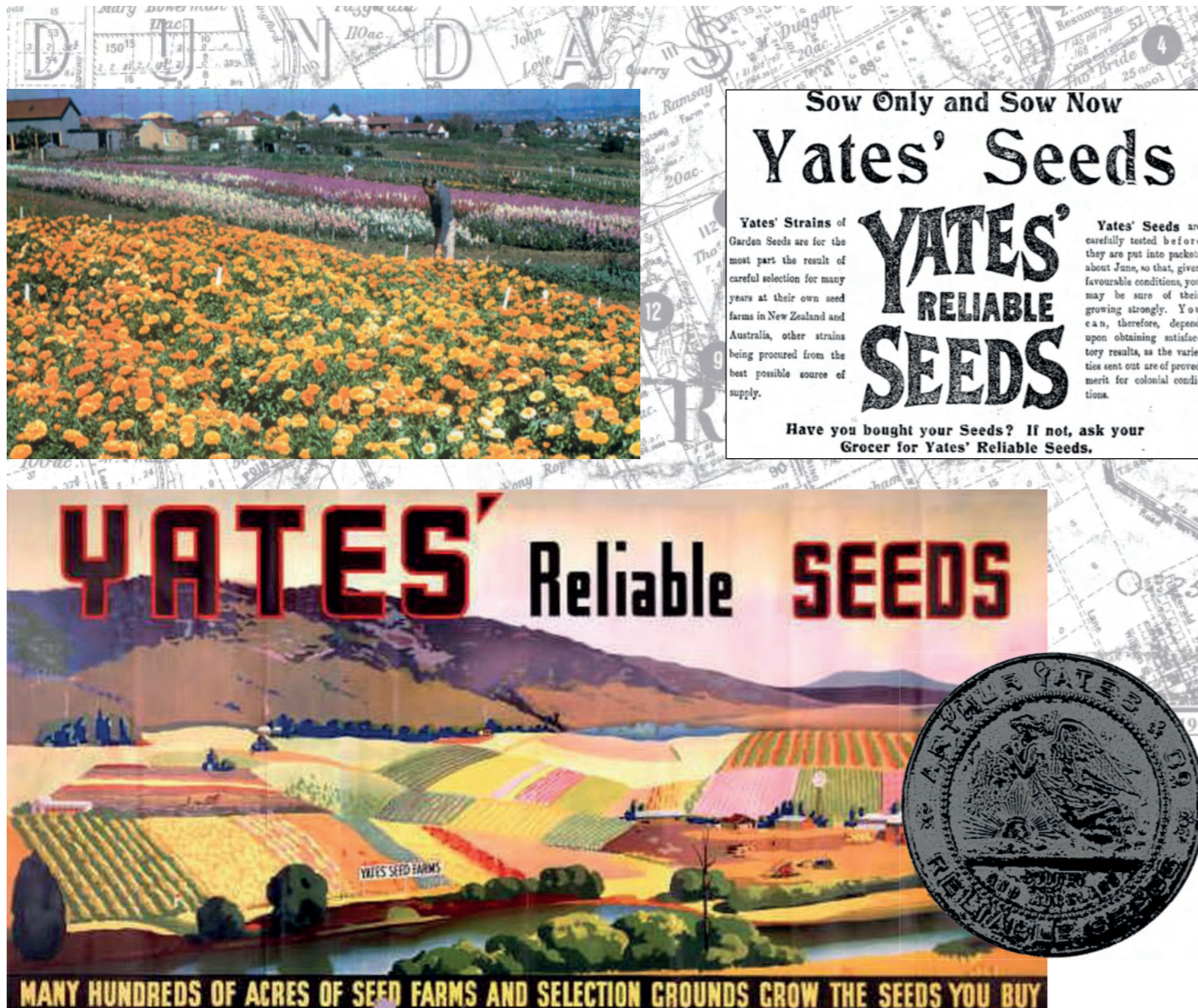
Three seater swing unit

- Sliding & Climbing -**
 - ① - Slide
 - ② - Rock incline climber
 - ③ - Climbing Pole / Ladder element
 - ④ - Rope course elements
- Natural & Adventurous -**
 - ⑤ - Climbing net
 - ③ - Climbing pole

- Active & Dynamic -**
 - ④ - Rope course elements
 - ② - Rock incline climber
 - ③ - Climbing pole / Ladder element

- Spinning, Rocking & Swinging -**
 - ⑥ - Swing with basket seat, backrest and standard

- Crawling & Balancing -**
 - ⑦ - Step pods
 - ⑧ - Rope step pods



HISTORY THROUGH DESIGN

The proximity of the site to a major light rail station provides an opportunity for the history of Dundas to be translated through design within + around Anna Maria King Park.

In 1920 the Dundas Valley became home to a seed testing trial ground established by the seed manufacturer Authur Yates and Company, this saw 47 acres of the valley being covered in a 'magnificent carpet of colour'.

On the farm 1000 different flower and 500 vegetable varieties were grown to determine the suitability of imported seed for Australian conditions. The seed trial gardens disappeared when most of Dundas Valley was resumed for housing in the 1950s.

The history of Dundas will be implemented into the design of Anna Maria King park through the use of seasonal and colourful planting that both pays reference to the sites history and provides ecological function.