

File: F:\DESIGN\01_Road & Traffic Design\Junction Road On-Street Parking_AJ1533\Design Drawings\02_AJ1533_RD401.dwg

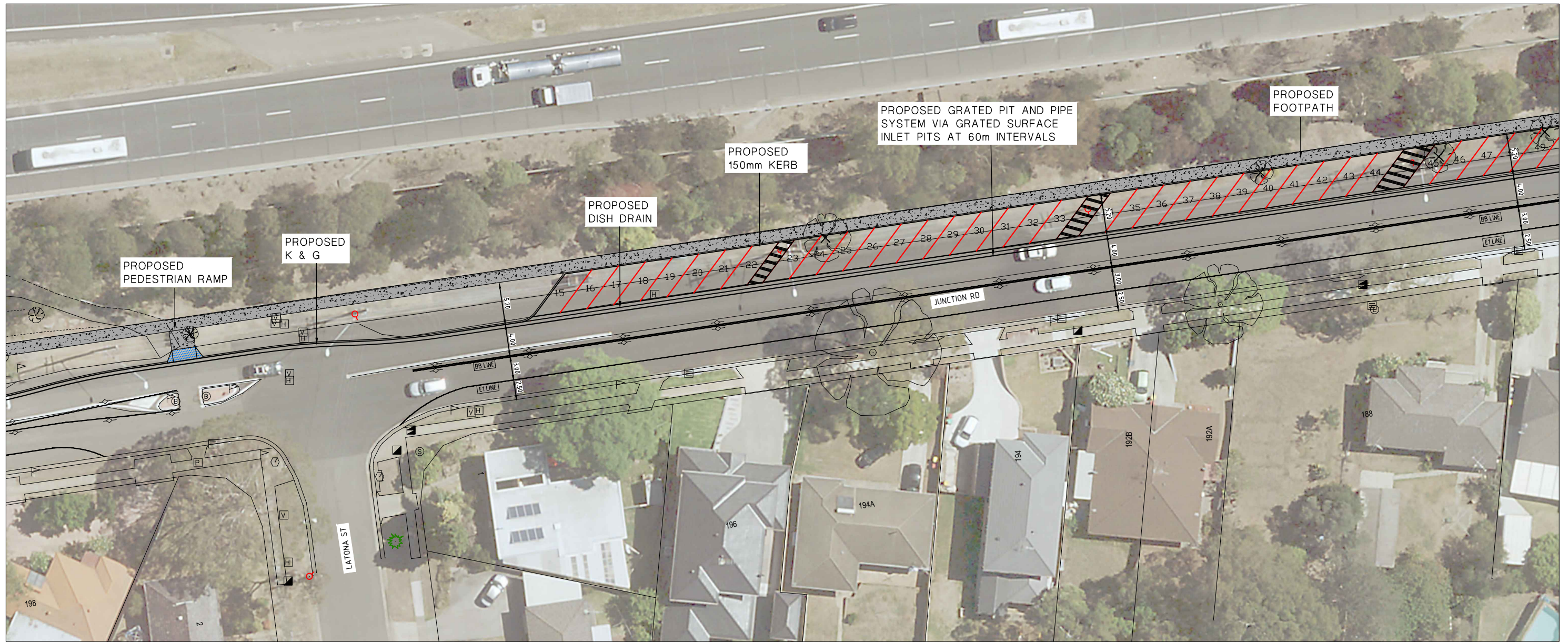
ISSUE	DESCRIPTION	CHECKED	APPROVED	DATE
01	PRELIMINARY ISSUE		BV	25.09.2020

PUBLIC UTILITIES LEGEND

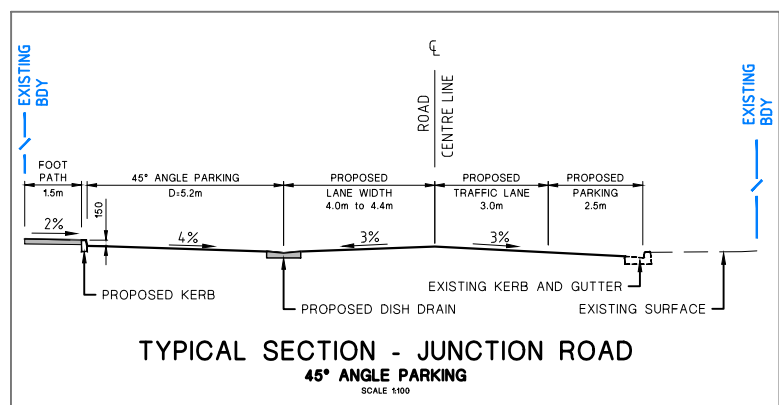
	WATER		SEWER		ELECTRICITY		TELSTRA
	RECYCLED WATER		SEWER MANHOLE		ELECTRICITY MANHOLE		TELSTRA PIT
	WATER HYDRANT		SEWER LAMPHOLE		ELECTRICITY POLE & LIGHT		TELSTRA PILLAR
	WATER STOP VALVE		SEWER VENT PIPE		ELECTRICITY POLE		TELSTRA POLE
	WATER AIR VALVE		GAS		LIGHT POLE		PHONE
	WATER METER		GAS METER		STAY POLE		TELSTRA CABLE MARKER
	WATER TAP		GAS VALVE BOXMARK		POLE & TRANSFORMER		TELSTRA SMALL TWIN PIT
	RECYCLED WATER HYDRANT		BOLLARD		ELECT TRANSFORMER CABINET		OPTUS PIT
	RECYCLED WATER METER		FENCE		ELECTRICITY PILLAR		MAIL BOX
	RECYCLED STOP VALVE		TRAFFIC SIGNAL JUNCTION BOX		TRAFFIC SIGNAL JUNCTION BOX		SHRUB
	RECYCLED STOP VALVE		TRAFFIC SIGNAL CONTROLLER		TRAFFIC SIGNAL CONTROLLER		TREE
	RECYCLED WATER TAP		TRAFFIC SIGNAL POST		TRAFFIC SIGNAL POST		BENCH MARK
	STORMWATER MANHOLE						
	GULLY PIT						

SURVEYED	THSC	APPROVED	
DESIGNED	V.S.		
DRAWN	V.S.		
VERIFIED	B.V.		
DATE	SEP.2020		

THE HILLS SHIRE COUNCIL			
JUNCTION ROAD BETWEEN ROMULUS ST AND CROPLEY DRIVE PROPOSED STREET PARKING PRELIMINARY DESIGN			
GENERAL ARRANGEMENT PLAN - SHEET 1 OF 7			
PROJECT No:	XXXXX	CAD FILE/PLAN No:	AJ1533
DWG No.	RD401	ISSUE	01



LEGEND	
	CONSTRUCT REFUGE ISLAND
	CONSTRUCT PEDESTRIAN RAMP
	CONSTRUCT FOOTPATH
	EXISTING STORMWATER PIT
	EXISTING SIGN
	TREE TO BE REMOVED
	PROPERTY BOUNDARY
	EXISTING LINEMARKING
	EXISTING KERB & GUTTER
	PROPOSED 150mm KERB
	PROPOSED KERB & GUTTER
	EXISTING STORMWATER LINE
	PROPOSED STORMWATER LINE
	STORMWATER LINE FLOW DIRECTION
	PROPOSED GULLY PIT, RMS TYPE SA
	PROPOSED GULLY PIT, RMS TYPE SO
	PROPOSED ON SITE DETENTION
	PROPOSED SO DISH DRAIN
	SEWER LINE
	OPTUS LINE
	UNKNOWN LINE
	TELSTRA LINE
	GAS LINE
	WATER LINE
	ELECTRICITY LINE



File: F:\DESIGN\01_Road & Traffic Design\Junction Road On-Street Parking_AJ1533\Design Drawings\02_AJ1533_RD402.dwg

ISSUE	DESCRIPTION	CHECKED	APPROVED	DATE
01	PRELIMINARY ISSUE		BV	25.09.2020

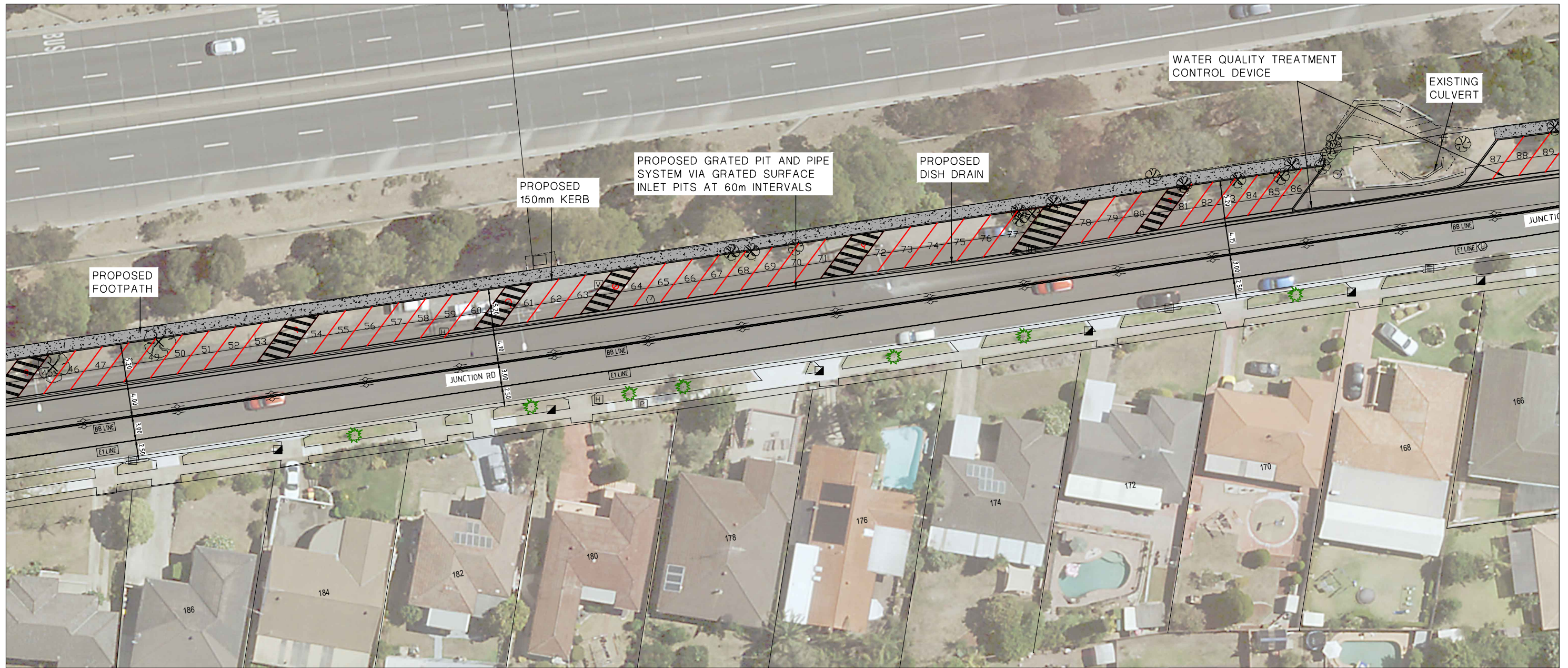
PUBLIC UTILITIES LEGEND	
	SEWER MANHOLE
	SEWER LAMP HOLE
	SEWER VENT PIPE
	GAS METER
	GAS VALVE BOXMARK
	WATER TAP
	GAS VALVE BOXMARK
	BOLLARD
	FIRE HYDRANT
	JUNCTION BOX
	ELECTRICITY MANHOLE
	ELECTRICITY POLE & LIGHT
	ELECTRICITY POLE
	STAY POLE
	POLE & TRANSFORMER
	ELECT TRANSFORMER CABINET
	ELECTRICITY PILLAR
	TRAFFIC SIGNAL JUNCTION BOX
	TRAFFIC SIGNAL CONTROLLER
	TRAFFIC SIGNAL POST
	TELSTRA PIT
	TELSTRA PILLAR
	TELSTRA POLE
	PHONE
	TELSTRA CABLE MARKER
	TELSTRA SMALL TWIN PIT
	OPTUS PIT
	MAIL BOX
	SHRUB
	TREE
	BENCH MARK

SURVEYED	THSC	APPROVED	
DESIGNED	V.S.		
DRAWN	V.S.		
VERIFIED	B.V.		
DATE	SEP.2020		

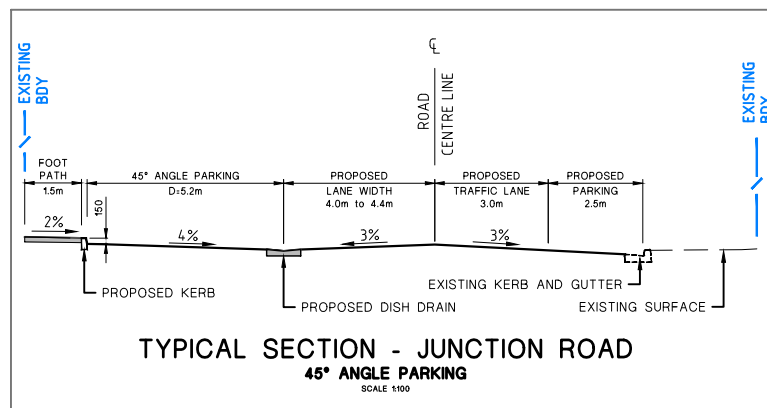
THE HILLS
Sydney's Garden Shire

3 Columbia Court Baulkham Hills, N.S.W. 2153
PO Box 7064, Baulkham Hills, BC, N.S.W. 2153
Ph: (02) 9843 0555 Fax: (02) 9843 0409

THE HILLS SHIRE COUNCIL			
JUNCTION ROAD BETWEEN ROMULUS ST AND CROPLEY DRIVE PROPOSED STREET PARKING PRELIMINARY DESIGN			
GENERAL ARRANGEMENT PLAN - SHEET 2 OF 7			
PROJECT No:	XXXXX	CAD FILE/PLAN No:	AJ1533
DWG No.	RD402	ISSUE	01



LEGEND	
	CONSTRUCT REFUGE ISLAND
	CONSTRUCT PEDESTRIAN RAMP
	CONSTRUCT FOOTPATH
	EXISTING STORMWATER PIT
	EXISTING SIGN
	EXISTING POWER POLE
	TREE TO BE REMOVED
	PROPERTY BOUNDARY
	EXISTING LINEMARKING
	EXISTING KERB & GUTTER
	PROPOSED 150mm KERB
	PROPOSED KERB & GUTTER
	EXISTING STORMWATER LINE
	PROPOSED STORMWATER LINE
	STORMWATER LINE FLOW DIRECTION
	PROPOSED GULLY PIT, RMS TYPE SA
	PROPOSED GULLY PIT, RMS TYPE SO
	PROPOSED ON SITE DETENTION
	PROPOSED SO DISH DRAIN
	SEWER LINE
	OP OPTUS LINE
	UN UNKNOWN LINE
	T TELSTRA LINE
	G GAS LINE
	W WATER LINE
	E ELECTRICITY LINE



File: F:\DESIGN\01_Road & Traffic Design\Junction Road On-Street Parking_AJ1533\Design Drawings\02_AJ1533_RD403.dwg

ISSUE	DESCRIPTION	CHECKED	APPROVED	DATE
01	PRELIMINARY ISSUE		BV	25.09.2020

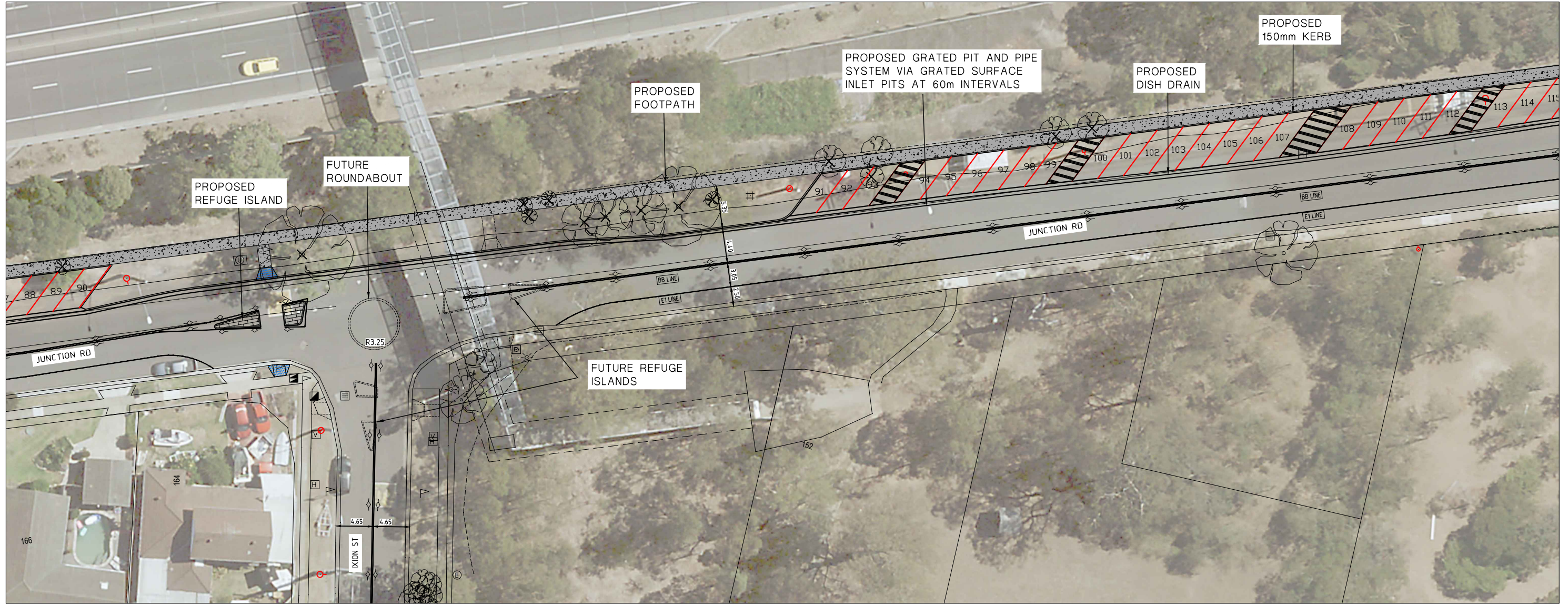
PUBLIC UTILITIES LEGEND	
	WATER
	RECYCLED WATER
	WATER HYDRANT
	WATER STOP VALVE
	WATER AIR VALVE
	WATER METER
	WATER TAP
	RECYCLED WATER HYDRANT
	RECYCLED WATER METER
	RECYCLED STOP VALVE
	RECYCLED WATER TAP
	STORMWATER MANHOLE
	GULLY PIT
	SEWER
	SEWER MANHOLE
	SEWER LAMPHOLE
	SEWER VENT PIPE
	GAS
	GAS METER
	GAS VALVE BOXMARK
	FENCE
	BOLLARD
	ELECTRICITY
	ELECTRICITY MANHOLE
	ELECTRICITY POLE & LIGHT
	ELECTRICITY POLE
	LIGHT POLE
	STAY POLE
	POLE & TRANSFORMER
	ELECT TRANSFORMER CABINET
	ELECTRICITY PILLAR
	TRAFFIC SIGNAL JUNCTION BOX
	TRAFFIC SIGNAL CONTROLLER
	TRAFFIC SIGNAL POST
	TELSTRA
	TELSTRA PIT
	TELSTRA PILLAR
	TELSTRA POLE
	PHONE
	TELSTRA CABLE MARKER
	TELSTRA SMALL TWIN PIT
	OPTUS PIT
	MAIL BOX
	SHRUB
	TREE
	BENCH MARK

SURVEYED	THSC	APPROVED	
DESIGNED	V.S.		
DRAWN	V.S.		
VERIFIED	B.V.		
DATE	SEP.2020		

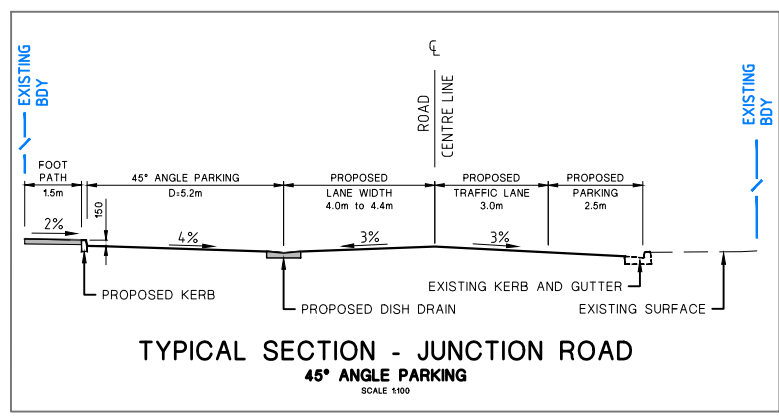
THE HILLS
Sydney's Garden Shire

3 Columbia Court Baulkham Hills, N.S.W. 2153
PO Box 7064, Baulkham Hills, BC, N.S.W. 2153
Ph: (02) 9843 0555 Fax: (02) 9843 0409

THE HILLS SHIRE COUNCIL			
JUNCTION ROAD BETWEEN ROMULUS ST AND CROPLEY DRIVE PROPOSED STREET PARKING PRELIMINARY DESIGN			
GENERAL ARRANGEMENT PLAN - SHEET 3 OF 7			
PROJECT No:	XXXXX	CAD FILE/PLAN No:	AJ1533
DWG No.	RD403	ISSUE	01



LEGEND	
	CONSTRUCT REFUGE ISLAND
	CONSTRUCT PEDESTRIAN RAMP
	CONSTRUCT FOOTPATH
	EXISTING STORMWATER PIT
	EXISTING SIGN
	EXISTING POWER POLE
	TREE TO BE REMOVED
	PROPERTY BOUNDARY
	EXISTING LINEMARKING
	EXISTING KERB & GUTTER
	PROPOSED 150mm KERB
	PROPOSED KERB & GUTTER
	EXISTING STORMWATER LINE
	PROPOSED STORMWATER LINE
	STORMWATER LINE FLOW DIRECTION
	PROPOSED GULLY PIT, RMS TYPE SA
	PROPOSED GULLY PIT, RMS TYPE SO
	PROPOSED ON SITE DETENTION
	PROPOSED SO DISH DRAIN
	SEWER LINE
	OP OPTUS LINE
	UN UNKNOWN LINE
	T TELSTRA LINE
	G GAS LINE
	W WATER LINE
	E ELECTRICITY LINE



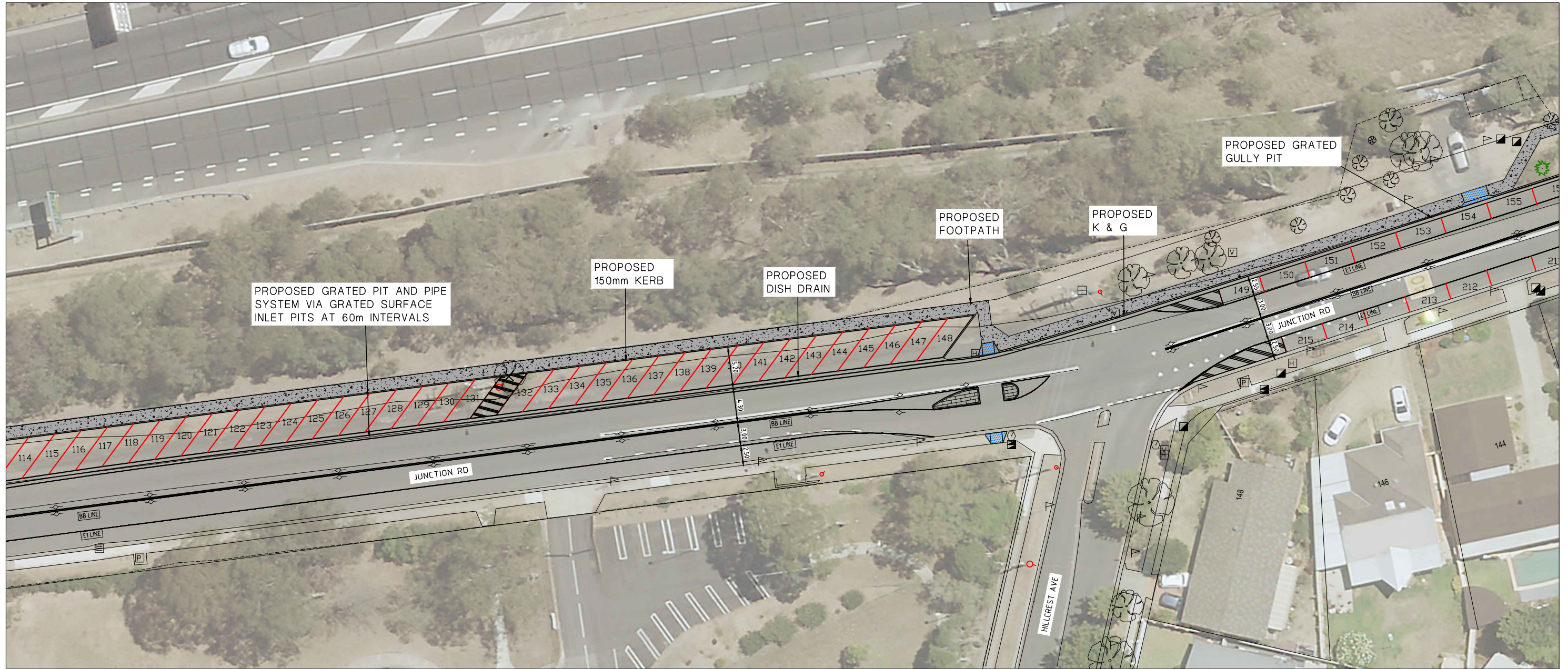
File: F:\DESIGN\01_Road & Traffic Design\Junction Road On-Street Parking_AJ1533\Design Drawings\02_AJ1533_RD404.dwg
 Plotfile: 30/09/2020 5:06:04 PM

ISSUE	DESCRIPTION	CHECKED	APPROVED	DATE
01	PRELIMINARY ISSUE		BV	25.09.2020

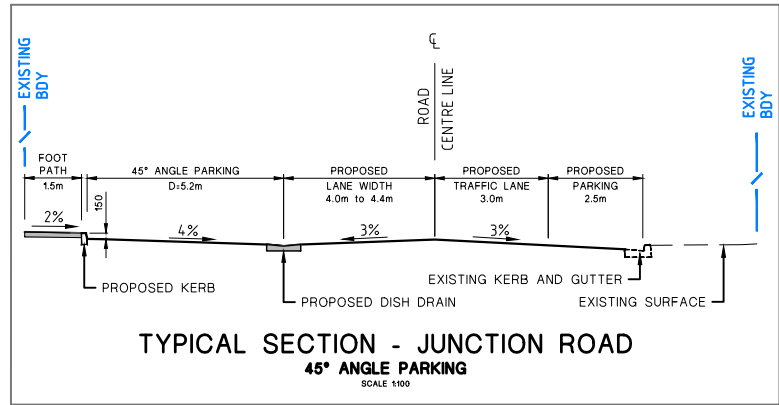
PUBLIC UTILITIES LEGEND	
	WATER
	RECYCLED WATER
	WATER HYDRANT
	WATER STOP VALVE
	WATER AIR VALVE
	WATER METER
	WATER TAP
	RECYCLED WATER HYDRANT
	RECYCLED WATER METER
	RECYCLED STOP VALVE
	RECYCLED WATER TAP
	STORMWATER MANHOLE
	GULLY PIT
	SEWER
	SEWER MANHOLE
	SEWER LAMPHOLE
	SEWER VENT PIPE
	GAS
	GAS METER
	GAS VALVE BOXMARK
	FENCE
	BOLLARD
	SIGN
	FIRE HYDRANT
	JUNCTION BOX
	ELECTRICITY
	ELECTRICITY MANHOLE
	ELECTRICITY POLE & LIGHT
	ELECTRICITY POLE
	LIGHT POLE
	STAY POLE
	POLE & TRANSFORMER
	ELECT TRANSFORMER CABINET
	ELECTRICITY PILLAR
	TRAFFIC SIGNAL JUNCTION BOX
	TRAFFIC SIGNAL CONTROLLER
	TRAFFIC SIGNAL POST
	TELSTRA
	TELSTRA PIT 1.1m MAIN PIT
	TELSTRA PILLAR
	TELSTRA POLE
	PHONE
	TELSTRA CABLE MARKER
	TELSTRA SMALL TWIN PIT
	OPTUS PIT
	MAIL BOX
	SHRUB
	TREE
	BENCH MARK

SURVEYED	THSC	APPROVED	
DESIGNED	V.S.		
DRAWN	V.S.		
VERIFIED	B.V.		
DATE	SEP.2020		

THE HILLS SHIRE COUNCIL			
JUNCTION ROAD BETWEEN ROMULUS ST AND CROPLEY DRIVE PROPOSED STREET PARKING PRELIMINARY DESIGN			
GENERAL ARRANGEMENT PLAN - SHEET 4 OF 7			
PROJECT No:	XXXXX	CAD FILE/PLAN No:	AJ1533
DWG No.	RD404	ISSUE	01



LEGEND	
	CONSTRUCT REFUGE ISLAND
	CONSTRUCT PEDESTRIAN RAMP
	CONSTRUCT FOOTPATH
	EXISTING STORMWATER PIT
	EXISTING SIGN
	EXISTING POWER POLE
	TREE TO BE REMOVED
	PROPERTY BOUNDARY
	EXISTING LINEMARKING
	EXISTING KERB & GUTTER
	PROPOSED 150mm KERB
	PROPOSED KERB & GUTTER
	EXISTING STORMWATER LINE
	PROPOSED STORMWATER LINE
	STORMWATER LINE FLOW DIRECTION
	PROPOSED GULLY PIT, RMS TYPE SA
	PROPOSED GULLY PIT, RMS TYPE SO
	PROPOSED ON SITE DETENTION
	PROPOSED SO DISH DRAIN
	SEWER LINE
	OP OPTUS LINE
	UN UNKNOWN LINE
	T TELSTRA LINE
	G GAS LINE
	W WATER LINE
	E ELECTRICITY LINE



File: F:\DESIGN\01_Road & Traffic Design\Junction Road On-Street Parking_AJ1533\Design Drawings\02_AJ1533_RD405.dwg
 Plot Date: 30/09/2020 5:06:09 PM

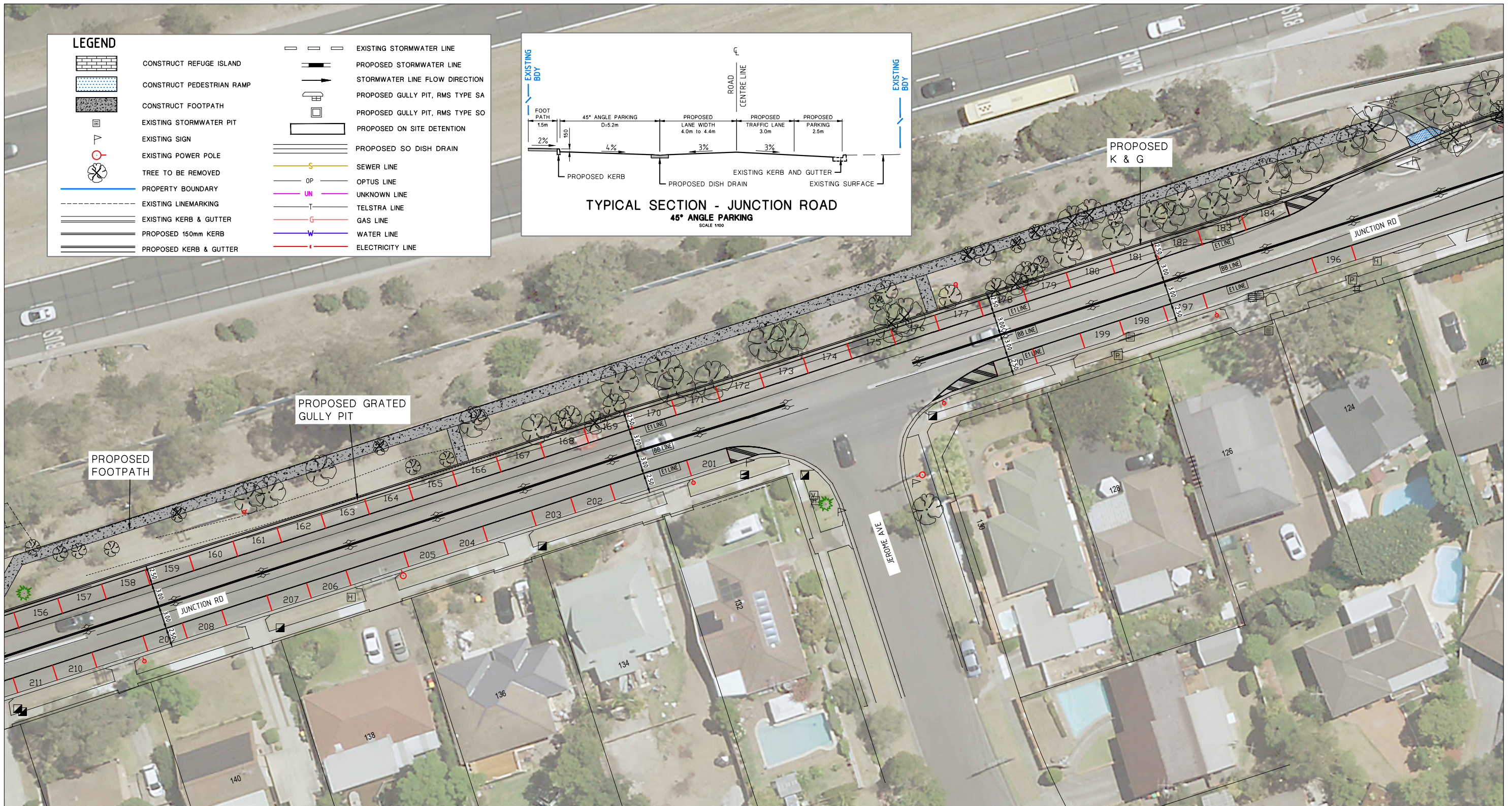
ISSUE	DESCRIPTION	CHECKED	APPROVED	DATE
01	PRELIMINARY ISSUE		BV	25.09.2020

PUBLIC UTILITIES LEGEND	
	SEWER MANHOLE
	SEWER LAMPHOLE
	SEWER VENT PIPE
	GAS METER
	GAS VALVE BOXMARK
	WATER TAP
	RECYCLED WATER HYDRANT
	RECYCLED WATER METER
	RECYCLED STOP VALVE
	RECYCLED WATER TAP
	STORMWATER MANHOLE
	GULLY PIT
	ELECTRICITY MANHOLE
	ELECTRICITY POLE & LIGHT
	ELECTRICITY POLE
	LIGHT POLE
	STAY POLE
	POLE & TRANSFORMER
	ELECT TRANSFORMER CABINET
	ELECTRICITY PILLAR
	TRAFFIC SIGNAL JUNCTION BOX
	TRAFFIC SIGNAL CONTROLLER
	TRAFFIC SIGNAL POST
	TELSTRA PIT
	TELSTRA PILLAR
	TELSTRA POLE
	PHONE
	TELSTRA CABLE MARKER
	TELSTRA SMALL TWIN PIT
	OPTUS PIT
	MAIL BOX
	SHRUB
	TREE
	BENCH MARK

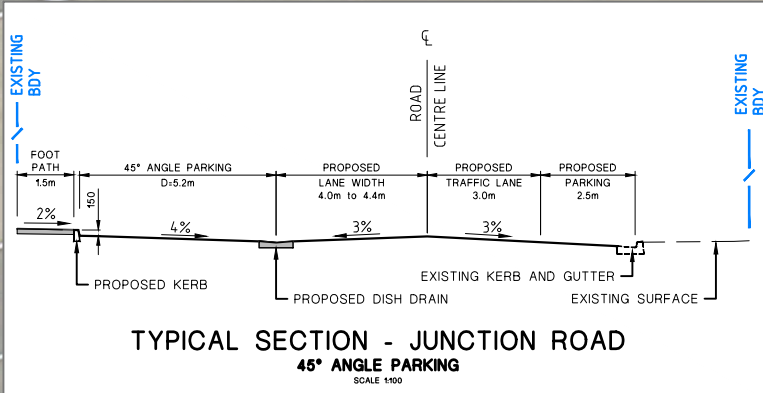
SURVEYED	THSC	APPROVED	
DESIGNED	V.S.		
DRAWN	V.S.		
VERIFIED	B.V.		
DATE	SEP.2020		

3 Columbia Court Baulkham Hills, N.S.W. 2153
 PO Box 7064, Baulkham Hills BC, N.S.W. 2153
 Ph: (02) 9843 0555 Fax: (02) 9843 0409

THE HILLS SHIRE COUNCIL JUNCTION ROAD BETWEEN ROMULUS ST AND CROPLEY DRIVE PROPOSED STREET PARKING PRELIMINARY DESIGN			
GENERAL ARRANGEMENT PLAN - SHEET 5 OF 7			
PROJECT No:	XXXXX	CAD FILE/PLAN No:	AJ1533
DWG No.	RD405	ISSUE	01



LEGEND	
	CONSTRUCT REFUGE ISLAND
	CONSTRUCT PEDESTRIAN RAMP
	CONSTRUCT FOOTPATH
	EXISTING STORMWATER PIT
	EXISTING SIGN
	EXISTING POWER POLE
	TREE TO BE REMOVED
	PROPERTY BOUNDARY
	EXISTING LINEMARKING
	EXISTING KERB & GUTTER
	PROPOSED 150mm KERB
	PROPOSED KERB & GUTTER
	EXISTING STORMWATER LINE
	PROPOSED STORMWATER LINE
	STORMWATER LINE FLOW DIRECTION
	PROPOSED GULLY PIT, RMS TYPE SA
	PROPOSED GULLY PIT, RMS TYPE SO
	PROPOSED ON SITE DETENTION
	PROPOSED SO DISH DRAIN
	SEWER LINE
	OPTUS LINE
	UNKNOWN LINE
	TELSTRA LINE
	GAS LINE
	WATER LINE
	ELECTRICITY LINE



File: F:\DESIGN\01_Road & Traffic Design\Junction Road On-Street Parking_AJ1533\Design Drawings\02_AJ1533_RD406.dwg
 Plotfile: 30/09/2020 5:06:14 PM

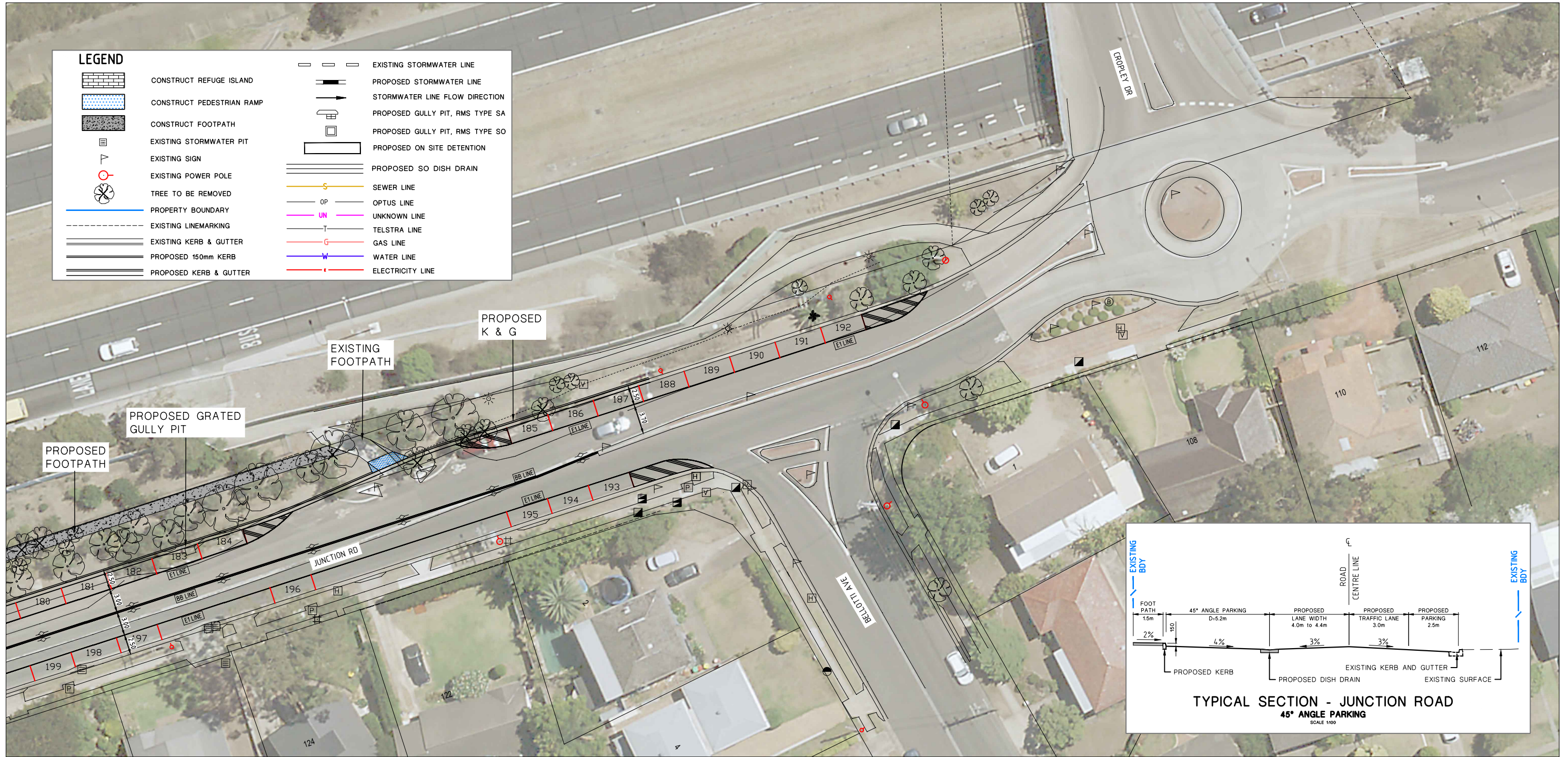
ISSUE	DESCRIPTION	CHECKED	APPROVED	DATE
01	PRELIMINARY ISSUE		BV	25.09.2020

PUBLIC UTILITIES LEGEND	
	SEWER MANHOLE
	SEWER LAMPHOLE
	SEWER VENT PIPE
	GAS METER
	GAS VALVE BOXMARK
	BOLLARD
	SIGN
	FIRE HYDRANT
	JUNCTION BOX
	ELECTRICITY MANHOLE
	ELECTRICITY POLE & LIGHT
	ELECTRICITY POLE
	STAY POLE
	POLE & TRANSFORMER
	ELECT TRANSFORMER CABINET
	ELECTRICITY PILLAR
	TRAFFIC SIGNAL JUNCTION BOX
	TRAFFIC SIGNAL CONTROLLER
	TRAFFIC SIGNAL POST
	TELSTRA PIT
	TELSTRA PILLAR
	TELSTRA POLE
	PHONE
	TELSTRA CABLE MARKER
	TELSTRA SMALL TWIN PIT
	OPTUS PIT
	MAIL BOX
	SHRUB
	TREE
	BENCH MARK

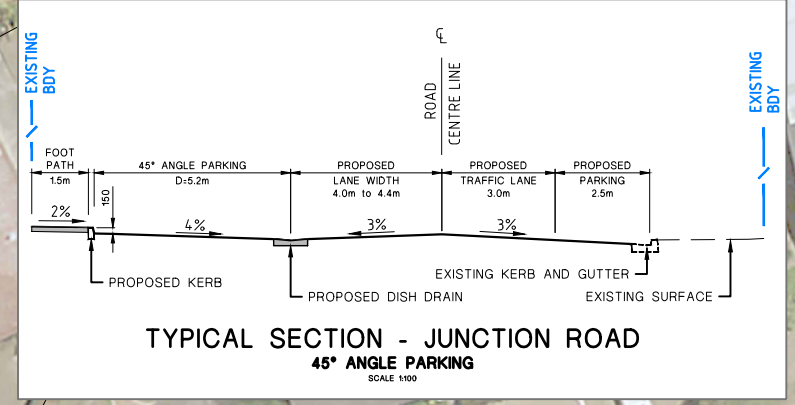
SURVEYED	THSC	APPROVED	
DESIGNED	V.S.		
DRAWN	V.S.		
VERIFIED	B.V.		
DATE	SEP.2020		

3 Columbia Court Baulkham Hills, N.S.W. 2153
 PO Box 1064, Baulkham Hills BC, N.S.W. 2153
 Ph: (02) 9843 0555 Fax: (02) 9843 0409

THE HILLS SHIRE COUNCIL			
JUNCTION ROAD BETWEEN ROMULUS ST AND CROPLEY DRIVE			
PROPOSED STREET PARKING			
PRELIMINARY DESIGN			
GENERAL ARRANGEMENT PLAN - SHEET 6 OF 7			
PROJECT No:	XXXXX	CAD FILE/PLAN No:	AJ1533
DWG No:	RD406	ISSUE	01



LEGEND	
	CONSTRUCT REFUGE ISLAND
	CONSTRUCT PEDESTRIAN RAMP
	CONSTRUCT FOOTPATH
	EXISTING STORMWATER PIT
	EXISTING SIGN
	EXISTING POWER POLE
	TREE TO BE REMOVED
	PROPERTY BOUNDARY
	EXISTING LINEMARKING
	EXISTING KERB & GUTTER
	PROPOSED 150mm KERB
	PROPOSED KERB & GUTTER
	EXISTING STORMWATER LINE
	PROPOSED STORMWATER LINE
	STORMWATER LINE FLOW DIRECTION
	PROPOSED GULLY PIT, RMS TYPE SA
	PROPOSED GULLY PIT, RMS TYPE SO
	PROPOSED ON SITE DETENTION
	PROPOSED SO DISH DRAIN
	SEWER LINE
	OPTUS LINE
	UNKNOWN LINE
	TELSTRA LINE
	GAS LINE
	WATER LINE
	ELECTRICITY LINE



File: F:\DESIGN\01_Road & Traffic Design\Junction Road On-Street Parking_AJ1533\Design Drawings\02_AJ1533_RD407.dwg
 Plot Date: 30/09/2020 5:08:19 PM

ISSUE	DESCRIPTION	CHECKED	APPROVED	DATE
01	PRELIMINARY ISSUE			25.09.2020

PUBLIC UTILITIES LEGEND							
	WATER		SEWER		ELECTRICITY		TELSTRA
	RECYCLED WATER		SEWER MANHOLE		ELECTRICITY MANHOLE		TELSTRA PIT
	WATER HYDRANT		SEWER LAMPHOLE		ELECTRICITY POLE & LIGHT		TELSTRA PILLAR
	WATER STOP VALVE		SEWER VENT PIPE		ELECTRICITY POLE		TELSTRA POLE
	WATER AIR VALVE		GAS		LIGHT POLE		PHONE
	WATER METER		GAS METER		STAY POLE		TELSTRA CABLE MARKER
	WATER TAP		GAS VALVE BOXMARK		POLE & TRANSFORMER		TELSTRA SMALL TWIN PIT
	RECYCLED WATER HYDRANT		FENCE		ELECT TRANSFORMER CABINET		OPTUS PIT
	RECYCLED WATER METER		BOLLARD		ELECTRICITY PILLAR		MAIL BOX
	RECYCLED STOP VALVE		SIGN		TRAFFIC SIGNAL JUNCTION BOX		SHRUB
	RECYCLED WATER TAP		FIRE HYDRANT		TRAFFIC SIGNAL CONTROLLER		TREE
	STORMWATER MANHOLE		JUNCTION BOX		TRAFFIC SIGNAL POST		BENCH MARK

SURVEYED	THSC	APPROVED	
DESIGNED	V.S.		
DRAWN	V.S.		
VERIFIED	B.V.		
DATE	SEP.2020		

THE HILLS
 Sydney's Garden Shire
 3 Columbia Court Baulkham Hills, N.S.W. 2153
 PO Box 7064, Baulkham Hills BC, N.S.W. 2153
 Ph: (02) 9843 0555 Fax: (02) 9843 0409

THE HILLS SHIRE COUNCIL JUNCTION ROAD BETWEEN ROMULUS ST AND CROPLEY DRIVE PROPOSED STREET PARKING PRELIMINARY DESIGN			
GENERAL ARRANGEMENT PLAN - SHEET 7 OF 7			
PROJECT No:	XXXXX	CAD FILE/PLAN No:	AJ1533
DWG No.	RD407	ISSUE	01