

Artist Impression of Telopea arrival precinct with the light rail stop



# TELOPEA VILLAGE

A seamless extension of the light rail precinct leads to Telopea Village and the core which includes shopping, community facilities, public plazas and improved residential dwellings. Residents will be surrounded by amenities to support their daily needs, all within walking distance of their homes.

The living experience is supported by the following key design features and built form outcomes including:

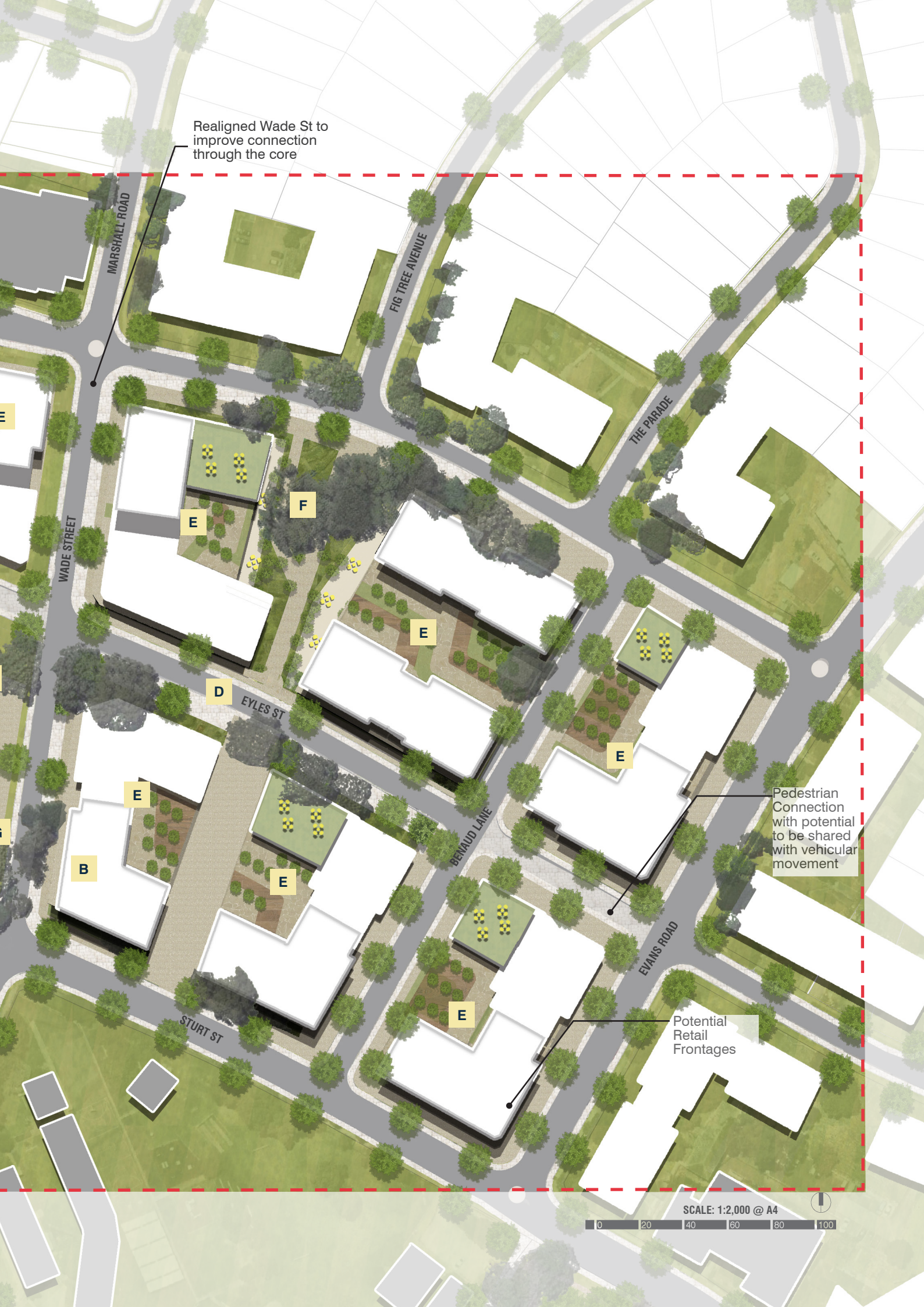
- A** SHOPPING SQUARE
- B** COMMUNITY FACILITIES ON LOWER LEVELS
- C** PUBLIC PLAZA
- D** EYLES STREET CONNECTION - VISUAL AND PEDESTRIAN CONNECTION BETWEEN STURT STREET TO EVANS ROAD
- E** RESIDENTIAL WITH PODIUM
- F** LANDSCAPED AREA WITH MATURE TREES RETAINED AND PUBLIC LINK BETWEEN SHORTLAND STREET AND EYLES STREET
- G** REALIGNED WADE STREET WITH BIO SWALE

The proposed Eyles Street connection has been designed to visually connect Sturt Street with Moffatts Drive through the centre of the core. This link increases pedestrian permeability and activity within the core and provides integration into the surrounding neighbourhood including Sturt Park, Acacia Park and the school. The Eyles Street connection facilitates safe and efficient pedestrian movements, providing surveillance from ground level activation.

Level changes can be accommodated via lifts and/or escalators along the new Eyles Street at key pedestrian connections and plazas.



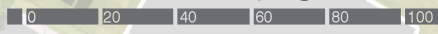
Realigned Wade St to improve connection through the core



Pedestrian Connection with potential to be shared with vehicular movement

Potential Retail Frontages

SCALE: 1:2,000 @ A4



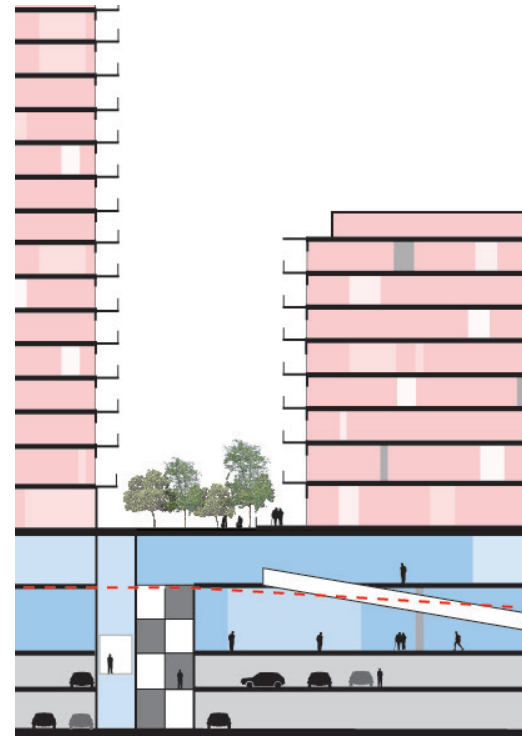


Telopea VILLAGE

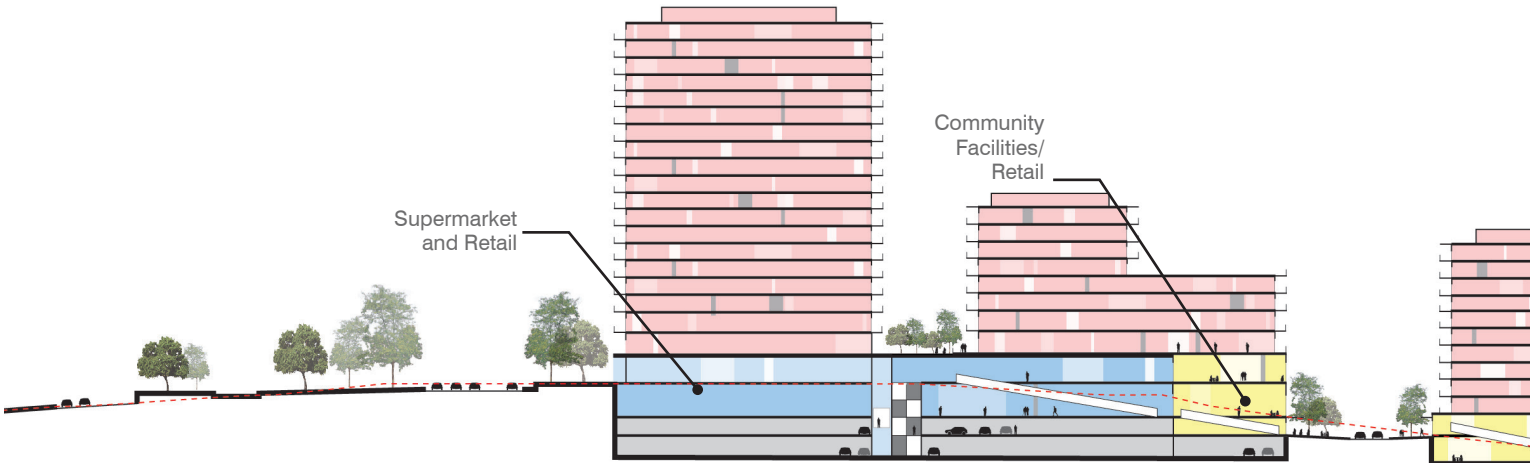
*Artist Impression of Teloopa Retail Plaza in connection with the light rail stop*



# INDICATIVE CROSS SECTIONS



PROPOSED CORE



ADDERTON RD

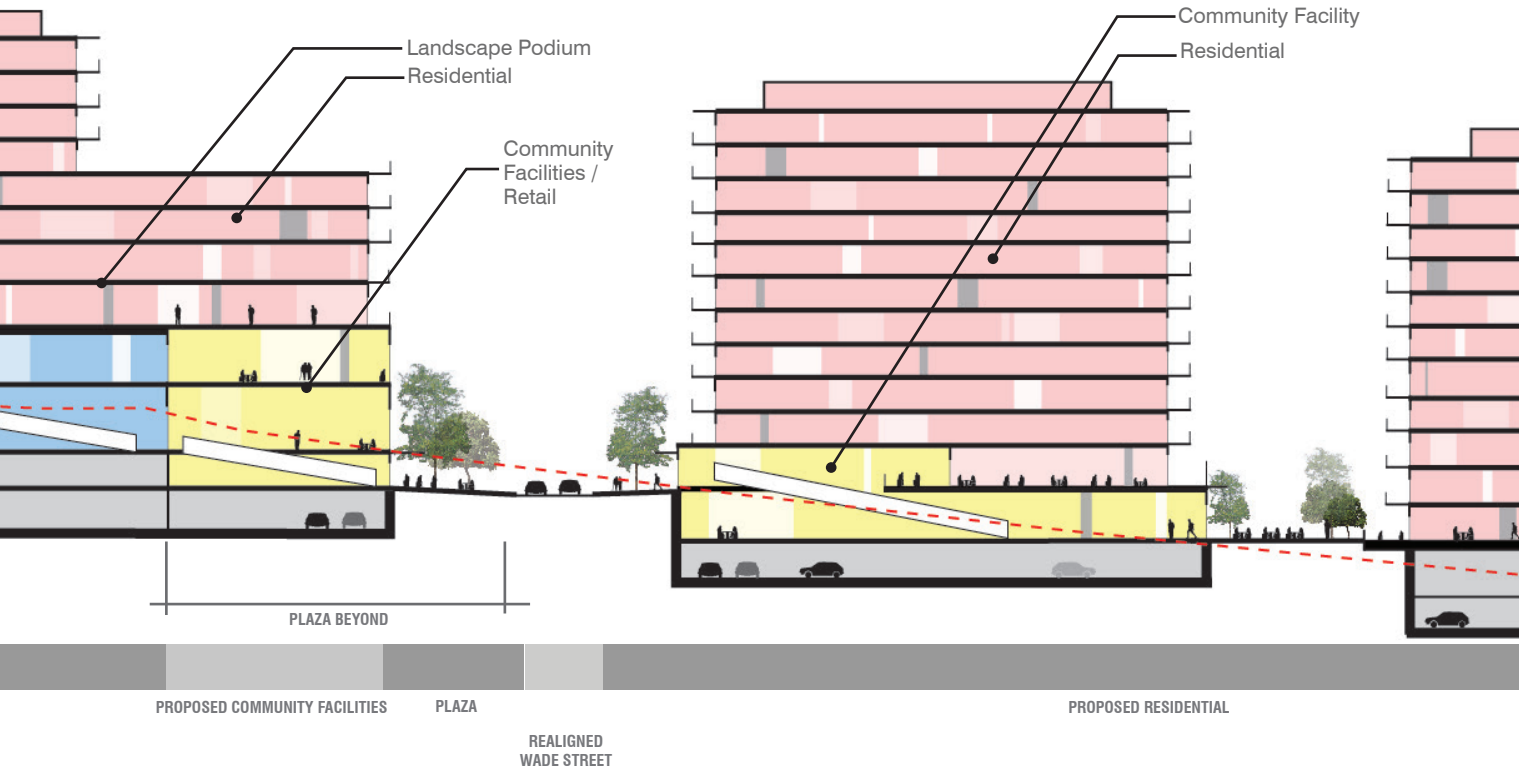
LIGHT RAIL  
CORRIDOR

STURT ST

REALIGNED WADE ST

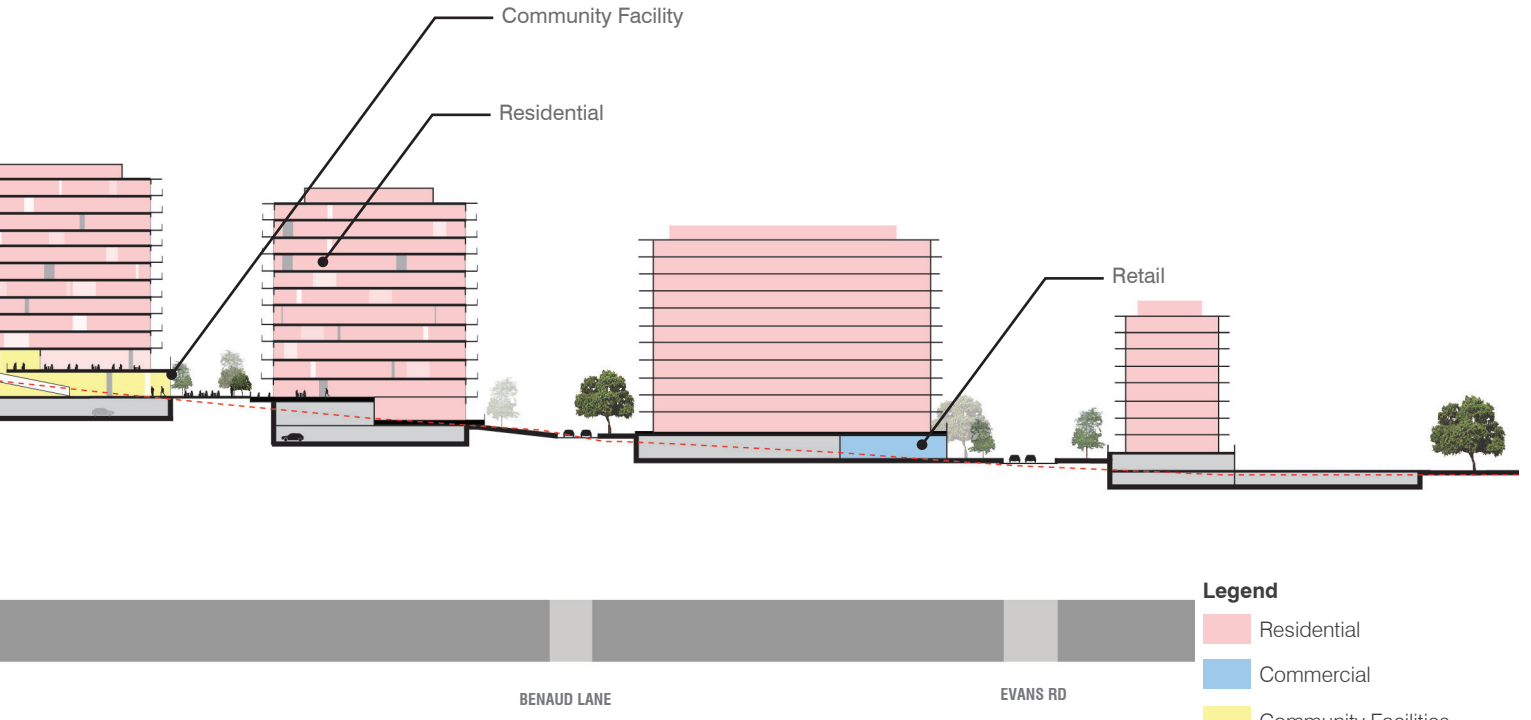
SECTION BB

SCALE: 1:75 @ A4



SECTION AA

SCALE: 1:1250 @ A4



Legend

- Residential
- Commercial
- Community Facilities
- Car Park