



Your Reference	TS 2021 23/ PTC 2110 A3
Our Reference	F2021/00058
Contact	Sandy Leung
Telephone	9806 5571
Email	traffic@cityofparramatta.nsw.gov.au

6 January 2021

Dear Sir/Madam,

RE: Proposed '6P 7pm-7am Monday-Friday' Parking Restriction in Cambridge Street, Epping

City of Parramatta Council consulted with the community regarding a proposal to install '6P 7pm – 7am Mon- Fri' parking restrictions on the western side of Cambridge Street in Epping, between Chester Street and the roundabout near the southern end of the street.

The consultation responses were received and taken into consideration. The Parramatta Traffic Committee at its meeting held on 20 October 2021 considered a report on this matter. Council at its meeting held on 22 November 2021 considered the Committee's recommendation and resolved:

1. *That 32 of the 76 parking spaces on the west side of Cambridge Street, Epping north of the roundabout have a '6P 7:00pm to 7:00am Monday-Friday' parking restriction imposed on them as shown on the plan within the report.*
2. *That a report be presented to the PTC and Council by the end of 2022 to review the '6P 7:00pm to 7:00am Monday – Friday' parking restriction as detailed in recommendation 1.*

The report and minutes of the meeting can be viewed at

https://businesspapers.parracity.nsw.gov.au/Open/2021/11/OC_22112021_MIN_676.PDF

Council report – page No. 11-12

Arrangements have been made to undertake the works by mid-January 2022.

For further information, please contact City of Parramatta's Traffic and Transport Investigations Engineer, Sandy Leung on 9806 5571.

Regards,

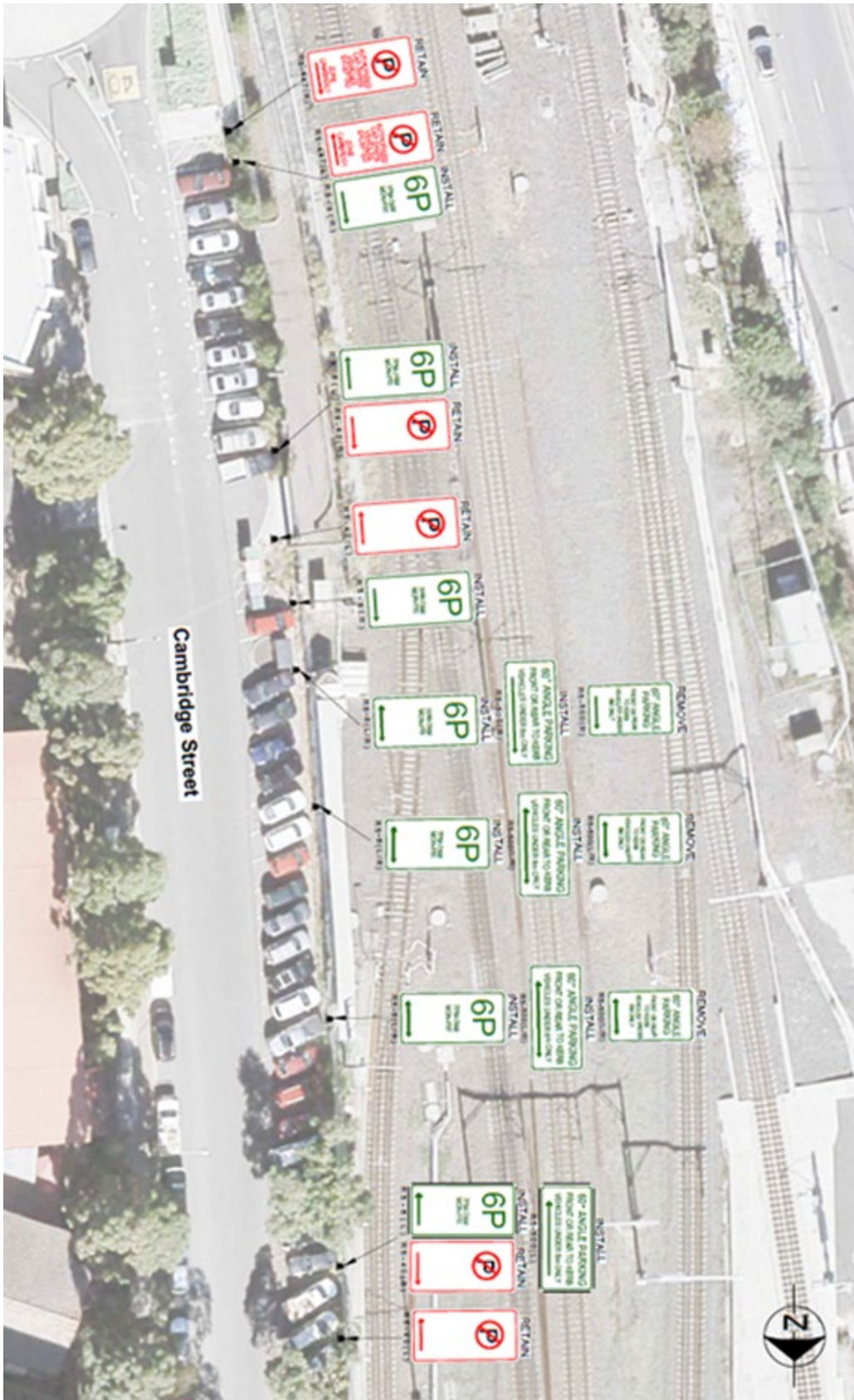
Richard Searle

Traffic and Transport Manager

Attach: Sketch plan

Contact us:

council@cityofparramatta.nsw.gov.au | 02 9806 5050
@cityofparramatta | PO Box 32, Parramatta, NSW 2124
ABN 49 907 174 773 | [cityofparramatta.nsw.gov.au](https://www.cityofparramatta.nsw.gov.au)



Contact us:

council@cityofparramatta.nsw.gov.au | 02 9806 5050
@cityofparramatta | PO Box 32, Parramatta, NSW 2124
ABN 49 907 174 773 | cityofparramatta.nsw.gov.au