

GRANITE PAVERS



Austral Verde
Bruce Rock (Austral Juparana)
Adelaide Black (Austral Black)

IN SITU CONCRETE PAVING



Exposed aggregate finish

PRECAST CONCRETE



Honed/polished finish

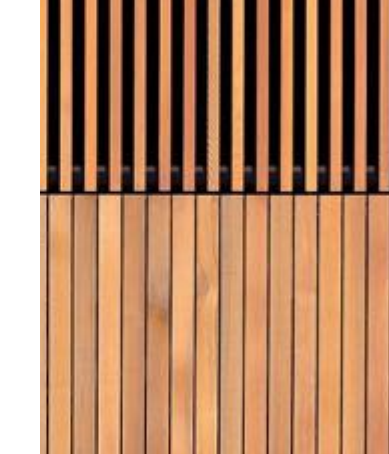
RECYCLED AUSTRALIAN HARDWOOD DECKING



WEATHERING STEEL BALUSTRADE WALL



TIMBER CLADDING



PAINTED STEEL



Dark bronze-grey

BIN



DRINKING FOUNTAIN



EXISTING STAINLESS STEEL BIKE HOOPS



STAINLESS STEEL BIKE HOOP



BIKE LOCKER



STAINLESS STEEL BOLLARDS



TACTILE GROUND SURFACE INDICATORS



MULTI FUNCTION LIGHT POLE

TREES



Angophora costata *Corymbia maculata* *Cupaniopsis anacardioides* *Eucalyptus tereticornis* *Ficus rubiginosa* *Lophostemon confertus* *Pyrus calleryana 'Bradford'*

SHRUBS



Banksia spinulosa *Bursaria spinosa* *Callistemon 'Great Balls of Fire'* *Callistemon viminalis 'Little John'* *Cordyline fruticosa 'Rubra'* *Daryanthes excelsa* *Grevillea 'Robyn Gordon'* *Grevillea rosmarinifolia 'Scarlet Sprite'* *Leptospermum laevigatum 'White Wave'* *Philodendron 'Xanadu'* *Pittosporum tobira 'Miss Muffet'* *Strelitzia reginae* *Syzygium luehmannii x wilsonii 'Cascade'*

GROUNDCOVERS



Alpinia purpurata *Anigozanthos 'Ruby Velvet'* *Asplenium australasicum* *Carpobrotus glaucescens* *Clivia miniata* *Gazania hybrids* *Liriope muscari 'Evergreen Giant'* *Liriope spicata* *Myoporum parvifolium* *Scaevola albida 'Mauve Clusters'*

NATIVE GRASSES



Dianella caerulea 'Little Jess' *Ficinia nodosa* *Imperata cylindrica* *Lomandra longifolia 'LM300' Tanika* *Microleana stipoides* *Pennisetum alopecuroides 'PA300' Nafray* *Poa labillardieri 'Eskdale'* *Themeda australis*

Filename:		GENERAL NOTES 1. Do not scale from this drawing. Use figured dimensions only. 2. Verify all dimensions on site. Refer any discrepancies to the Principal's Representative for resolution before proceeding. 3. If this drawing is unclear, ask for direction from the Principal's Representative. 4. Site check the location of utilities and services prior to the commencement of works. Refer any discrepancies to the Principal's Representative for resolution.		SURVEY YSCO GEOMATICS Suite 4, 114 Hampden Road Artarmon NSW 2064 www.yscogeomatics.com.au T 9419 8222 Survey drawing date: 07/05/2019 Grid: MGA Datum: AHD		DESIGN TEAM Architect LAHZNIMO ARCHITECTS Suite 404, Flourmill Studios 3 Gladstone St, Newtown NSW 2042 T 02 9550 5200		CLIENT City of Parramatta 126 Church Street Parramatta NSW 2150 PO Box 3 Parramatta NSW 2124		LANDSCAPE ARCHITECT HEAD CONSULTANT Spackman Mossop Michaels Pty Ltd 115 Finders Street Surry Hills NSW 2010 www.sm2group.com.au info@sm2group.com.au T 02 9361 4549		DRAWING STATUS PART 5 ASSESSMENT Designed: CD/TC Drawing date: August 2020 Drawn: BH/TC/CD Plot date: 31/8/20 Checked: MS Scale: 1:100 Sheet size: A1 Size on original: 0 10 20 30 40 50mm		PROJECT CHARLES STREET SQUARE CHARLES STREET, PARRAMATTA Drawing name: MATERIALS & PLANTING PALETTE Drawing number: L-REF-201	
1 REF PACKAGE 18/8/20 MS		REVISION HISTORY		DIMENSION STANDARD Unless noted otherwise: • All levels are shown in metres • All dimensions are computer generated to 1mm		© This drawing is Copyright and may not be used, reproduced or copied wholly or in part without written permission from Spackman Mossop Michaels Pty Ltd. This drawing may only be used for the express purpose and project for which it has been created and delivered.		SMM Project no: 18074 Approval: Director Date: xx/xx/xx Tender: Construction Date: xx/xx/xx		Rev 1					