



# EXISTING CONTEXT



## LEGEND

- Retail tenancy

---

- Industrial/Commerical tenancy

---

- Main road

---

- Local street

---

- Access/Loading zone to laneway

---

- BUS Bus stop and bus route

---

- Western Sydney University Campus

# FUTURE CONTEXT



## LEGEND

- Retail tenancy

---

- Industrial/Commerical tenancy

---

- Main road

---

- New pedestrian connections

---

- Cycleway connection

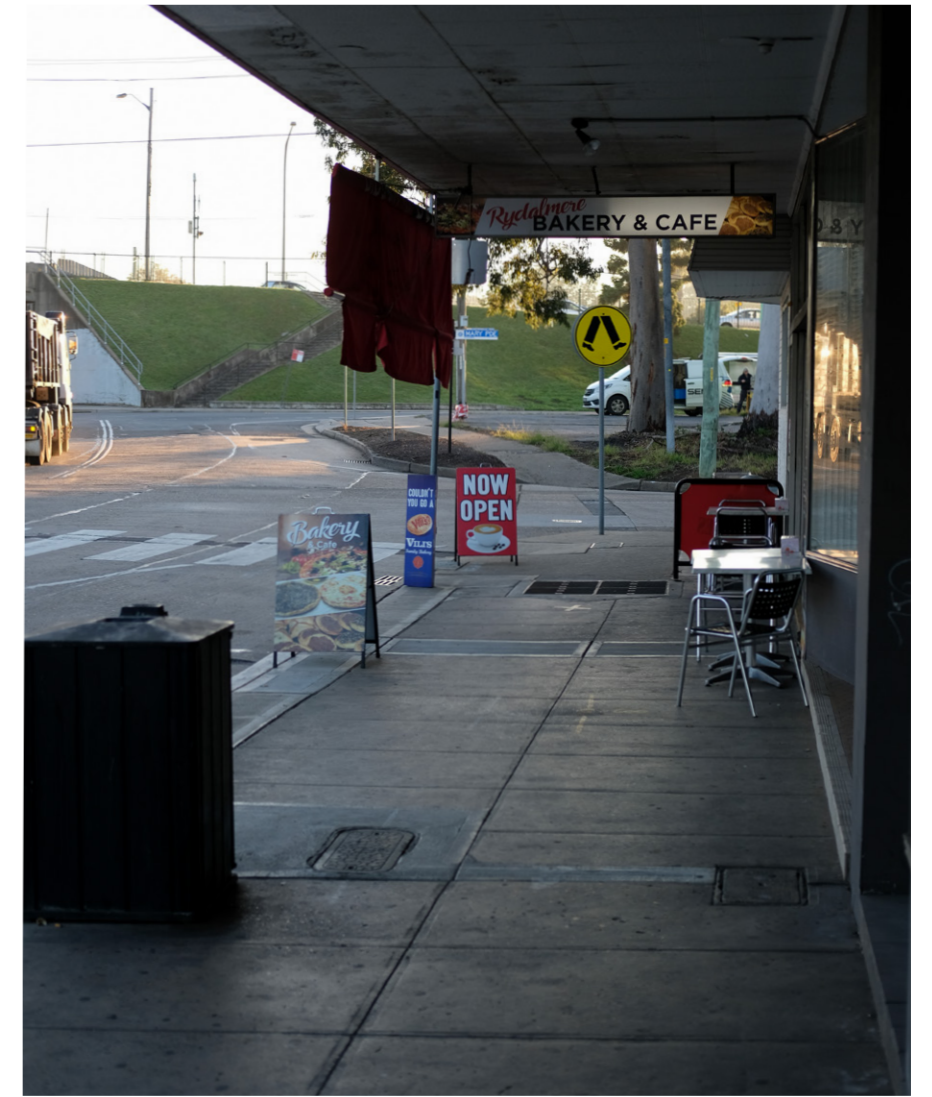
---

- L Future lightrail station

---

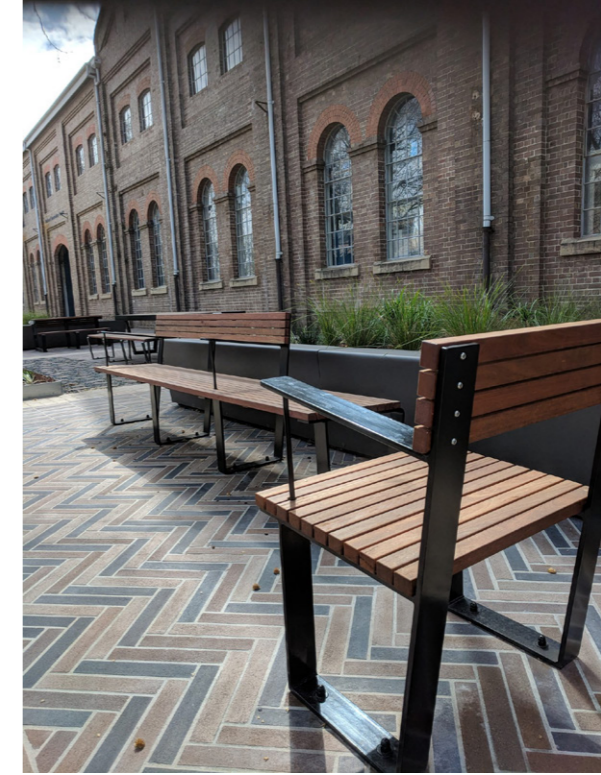
- Western Sydney University Campus

# EXISTING SITE



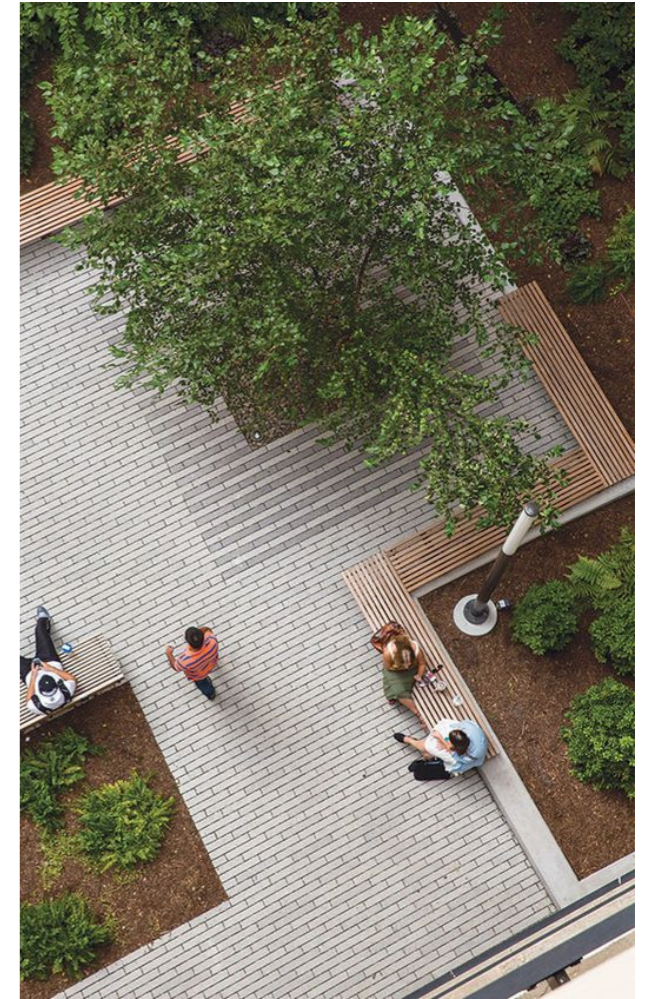
# PRECEDENT STUDIES

## FURNITURE & SOCIAL SETTINGS



# PRECEDENT STUDIES

## TEXTURES & DETAIL



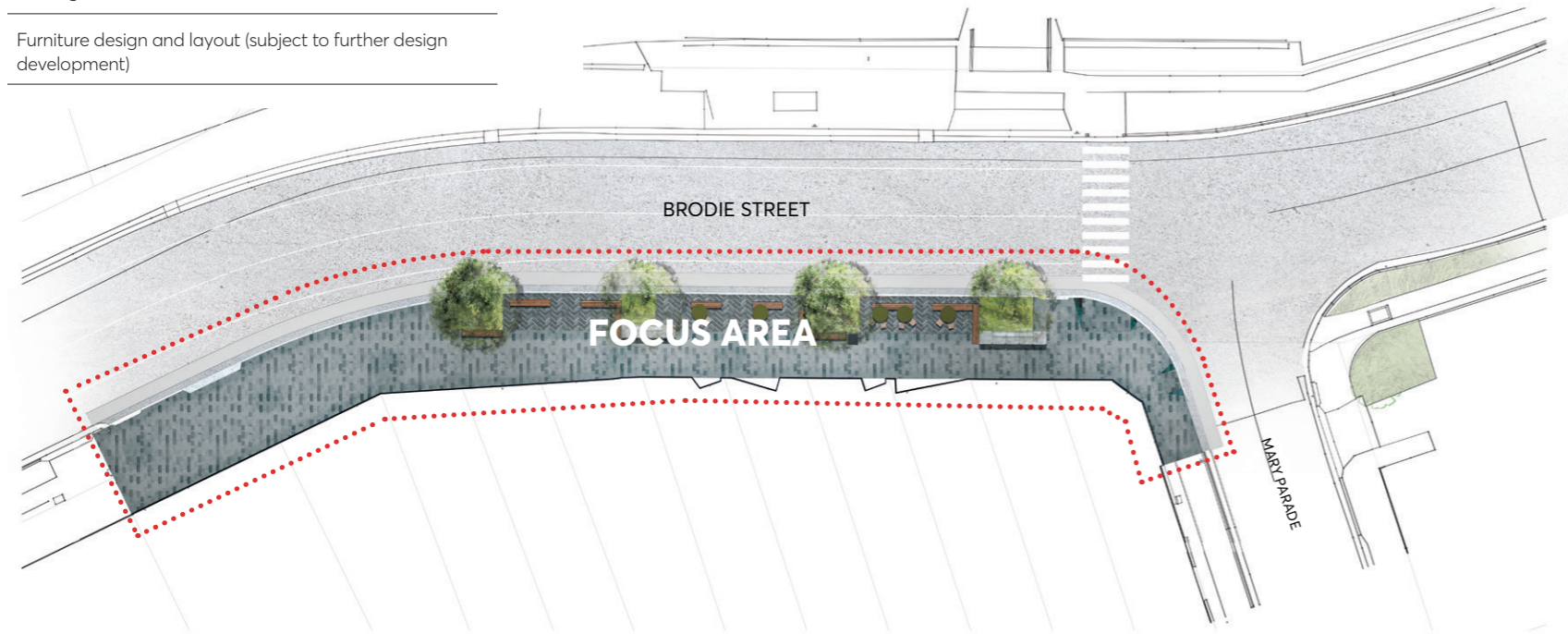
# CONCEPT DESIGN

## KEY CHANGES SINCE PREVIOUS ISSUE:

Width of carriage way lanes increased to match existing road arrangement and provide required width for heavy vehicles

Parking lanes widened from 2.3 to 2.4m

Furniture design and layout (subject to further design development)



## LEGEND

- Line of existing kerb
- Potential artwork/ colouration of building facade
- 1 Existing crossing point to be retained
- 2 Street signage to be reinstated as per existing locations
- 3 Width of existing carriageway to be maintained. Additional footpath width to be achieved by narrowing parking lanes.
- 4 3.5m vehicular lanes to carriageway
- 5 2.4m parking lanes to carriageway
- 6 Proposed granite paving to footpath
- 7 Proposed 'special' small format granite paver to seating areas.
- 8 Planted rain gardens with new tree plantings for shade
- 9 Custom furniture including long timber benches, seats tables and folded steel stools to provide additional amenity to shops and food outlets



# DESIGN PROPOSAL





# DESIGN PROPOSAL



# DESIGN PROPOSAL



