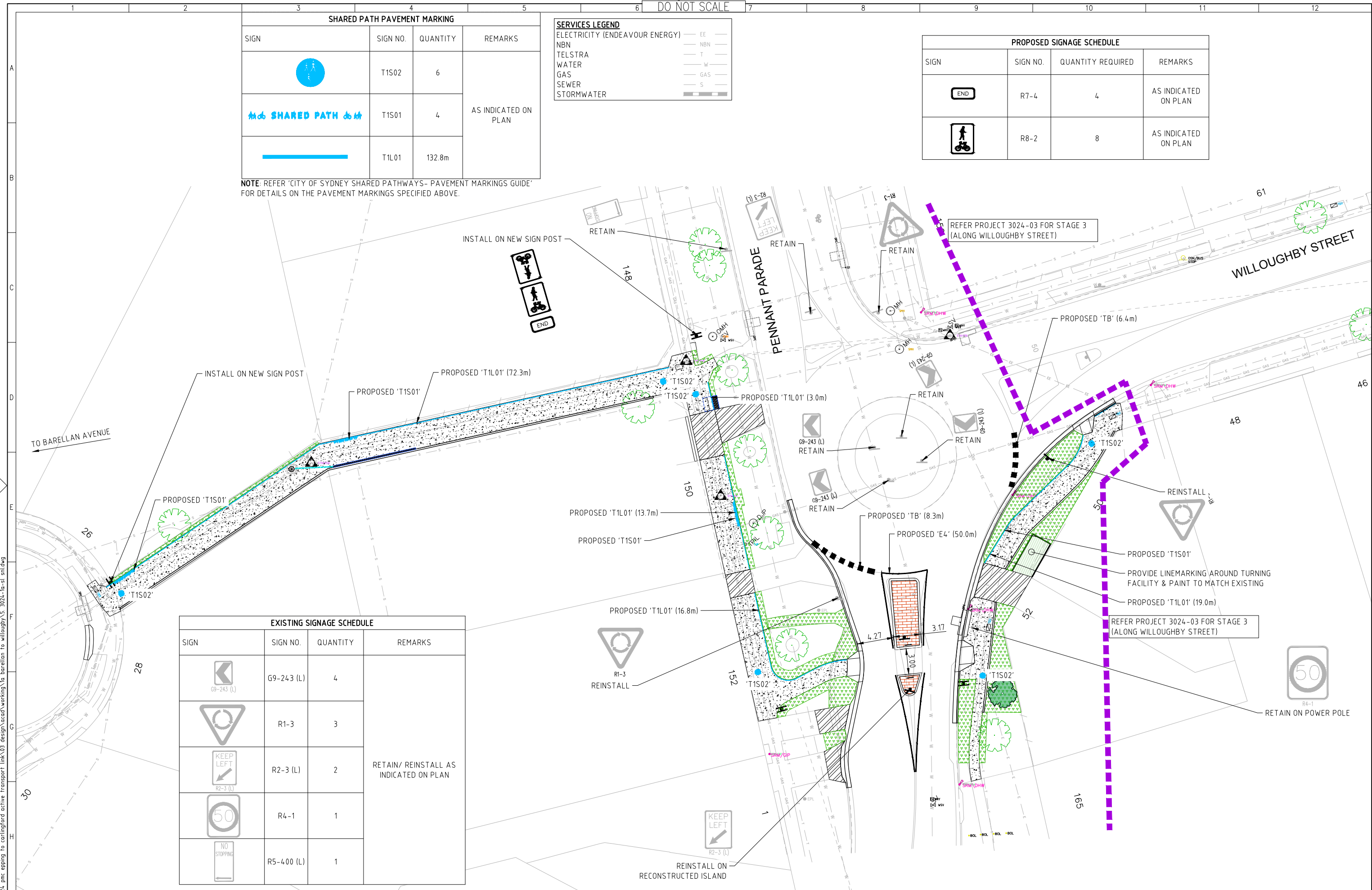


SHARED PATH PAVEMENT MARKING			
SIGN	SIGN NO.	QUANTITY	REMARKS
	T1S02	6	AS INDICATED ON PLAN
	T1S01	4	
	T1L01	132.8m	

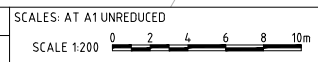
SERVICES LEGEND	
ELECTRICITY (ENDEAVOUR ENERGY)	EE
NBN	NBN
TELSTRA	T
WATER	W
GAS	GAS
SEWER	S
STORMWATER	

PROPOSED SIGNAGE SCHEDULE			
SIGN	SIGN NO.	QUANTITY REQUIRED	REMARKS
	R7-4	4	AS INDICATED ON PLAN
	R8-2	8	AS INDICATED ON PLAN

NOTE: REFER 'CITY OF SYDNEY SHARED PATHWAYS- PAVEMENT MARKINGS GUIDE' FOR DETAILS ON THE PAVEMENT MARKINGS SPECIFIED ABOVE.



EXISTING SIGNAGE SCHEDULE			
SIGN	SIGN NO.	QUANTITY	REMARKS
	G9-243 (L)	4	RETAIN/ REINSTALL AS INDICATED ON PLAN
	R1-3	3	
	R2-3 (L)	2	
	R4-1	1	
	R5-400 (L)	1	



Copyright
This document is & shall remain the property of Complete Urban Pty Ltd.
The document may only be used for the purpose for which it was commissioned & in accordance with the terms of engagement for the commission. Unauthorised use of this document in any way is prohibited.



10 Regent Street
Chippendale NSW 2008
p 02 9282 9900
f 02 9282 9277

COMPLETE

ABN 64 100 037 812
www.completeurban.com.au

Drawn	BS	Designed	BS
Drafting	NP	Design	NP
Check	NP	Check	NP
Approved			
NOT FOR CONSTRUCTION			
This Drawing must not be used for Construction unless signed as Approved			

Client and Job	CITY OF PARRAMATTA COUNCIL EPPING TO CARLINGFORD ACTIVE TRANSPORT LINK PROJECT 1A- BARELLAN AVENUE TO WILLOUGHBY ST VIA PENNANT PARADE
Title	TRAFFIC COMMITTEE PLAN
Drg. No.	3024-1A-TC-01
Scale	A1
Rev	--

File location: z:\projects\3024_pmc_epping_to_carlingford_active_transport_link\03_design\acad\working\1a_barellan_to_willoughby\3_3024-1a-s1_spl.dwg