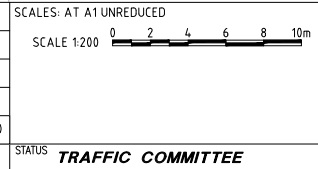


DO NOT SCALE



File location: z:\projects\3024\_pmc\_epping\_to\_carlingford\_active\_transport\ink\03\_design\vacat\working\3\_willoughby\_street\6\_3024-03-sl\_signs\_and\_lines.dwg

TRAFFIC COMMITTEE		BS	NP	12/02/20
No.	Revision - Revise on CAD do not amend by hand	Checked	Approved	Date
		TRAFFIC COMMITTEE		



Copyright  
 "This document is & shall remain the property of Complete Urban Pty Ltd.  
 The document may only be used for the purpose for which it was commissioned & in accordance with the terms of engagement for the commission. Unauthorised use of this document in any way is prohibited"



10 Regent Street  
 Chippendale NSW 2008

p 02 9282 9900  
 f 02 9282 9277

**COMPLETE**

ABN 64 100 037 812  
 www.completeurban.com.au

SCALE: 1:200 @A1

Drawn	BS	Designed	BS
Drafting Check	NP	Design Check	NP
Approved			

**NOT FOR CONSTRUCTION**

This Drawing must not be used for Construction unless signed as Approved

Client and Job	CITY OF PARRAMATTA COUNCIL EPPING TO CARLINGFORD ACTIVE TRANSPORT LINK PROJECT 3- WILLOUGHBY STREET, EPPING
Title	LAYOUT PLAN- ROAD PAVEMENT MARKINGS
	SHEET 00 OF 00
Drg. No.	3024-03-TC-00
Size	A1
Rev	--