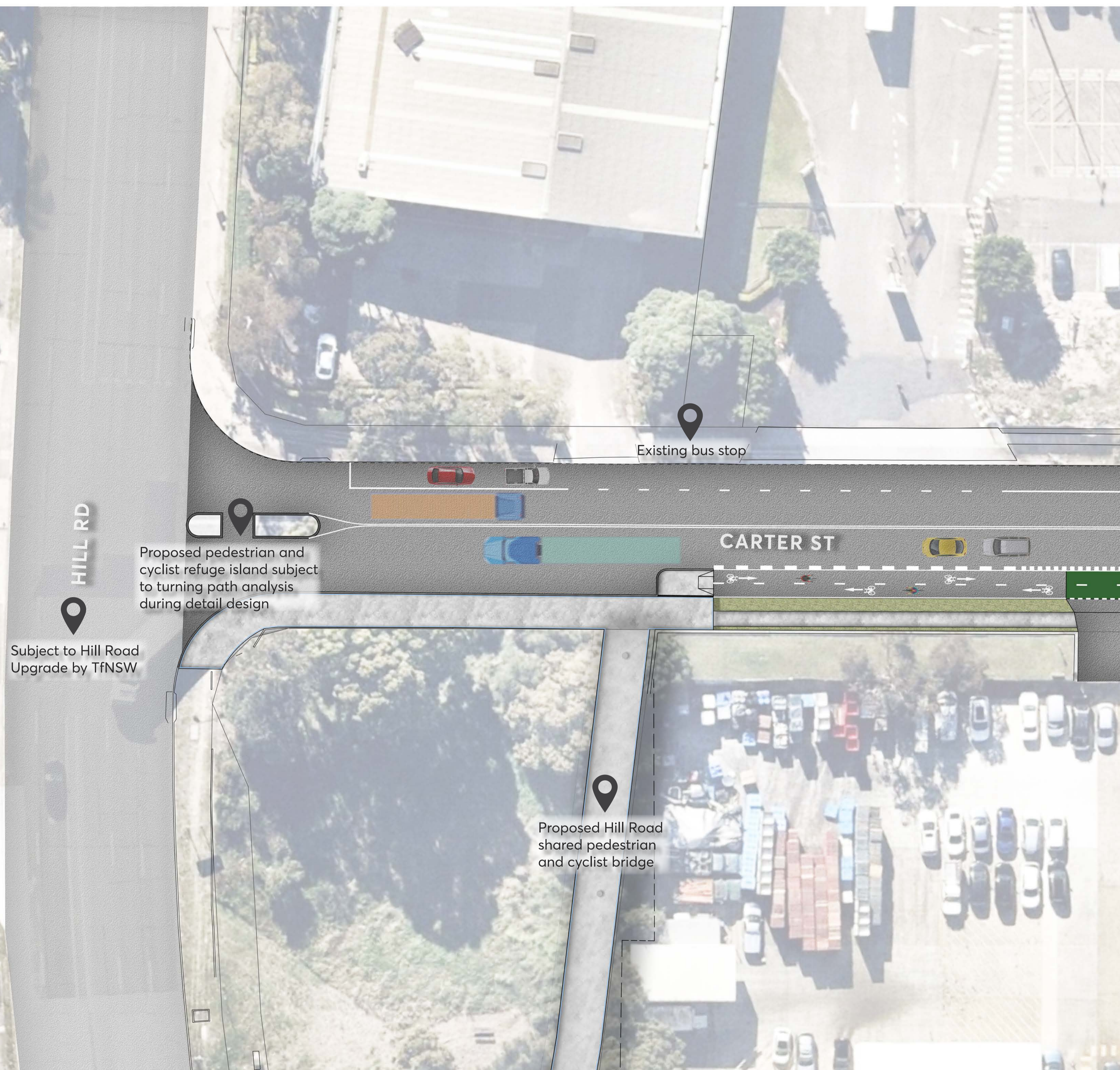


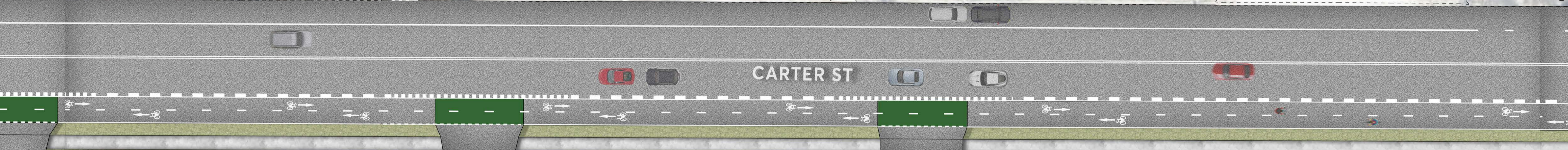


Hill Road Bridge will be either a 'through truss' (above image) or 'concrete beam' (below image) pending detailed design. Haslams Creek Bridge will be a 'through truss' (above image).

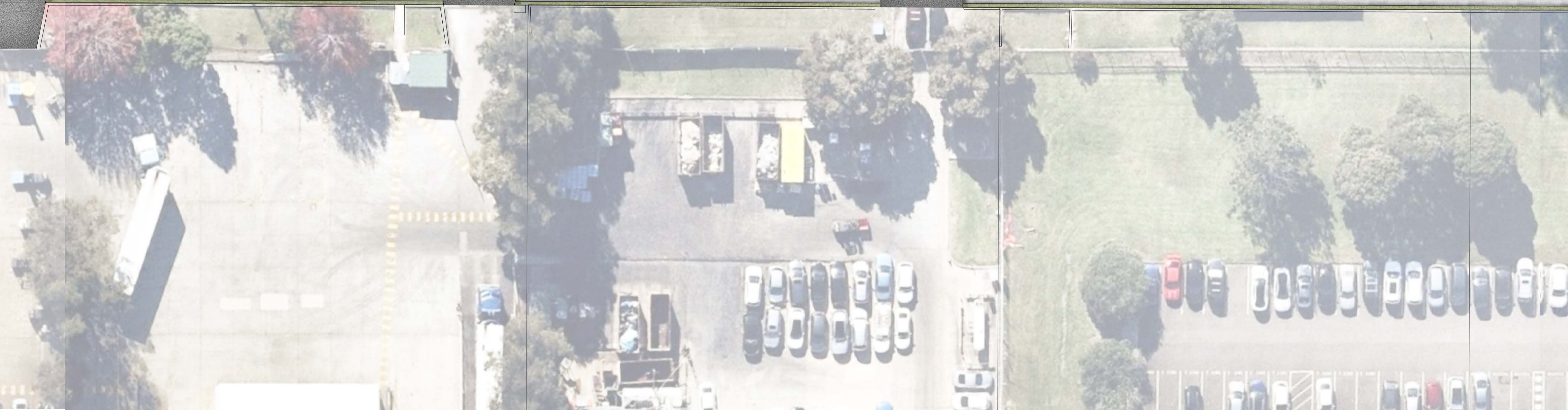


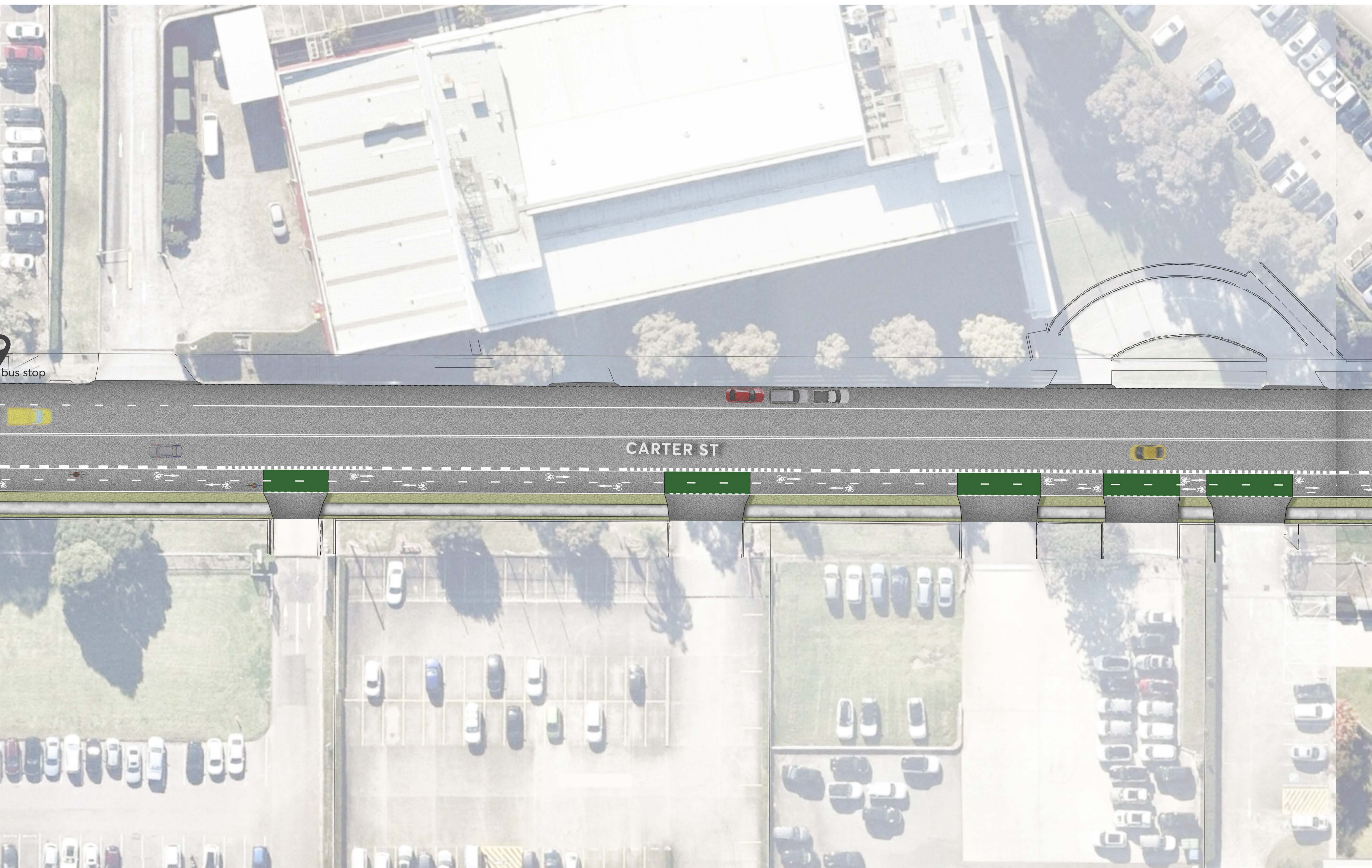


Existing



CARTER ST

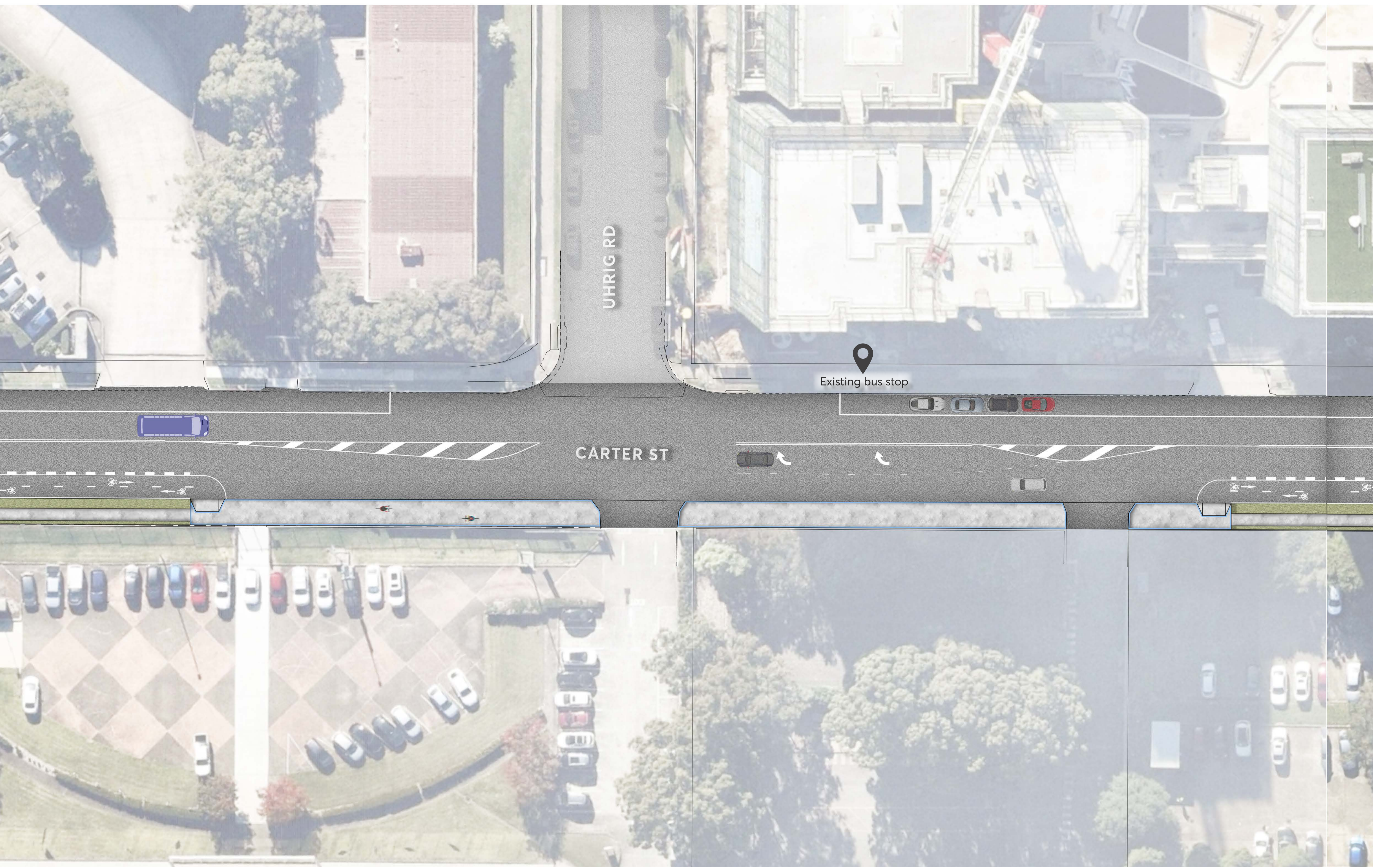




bus stop

CARTER ST



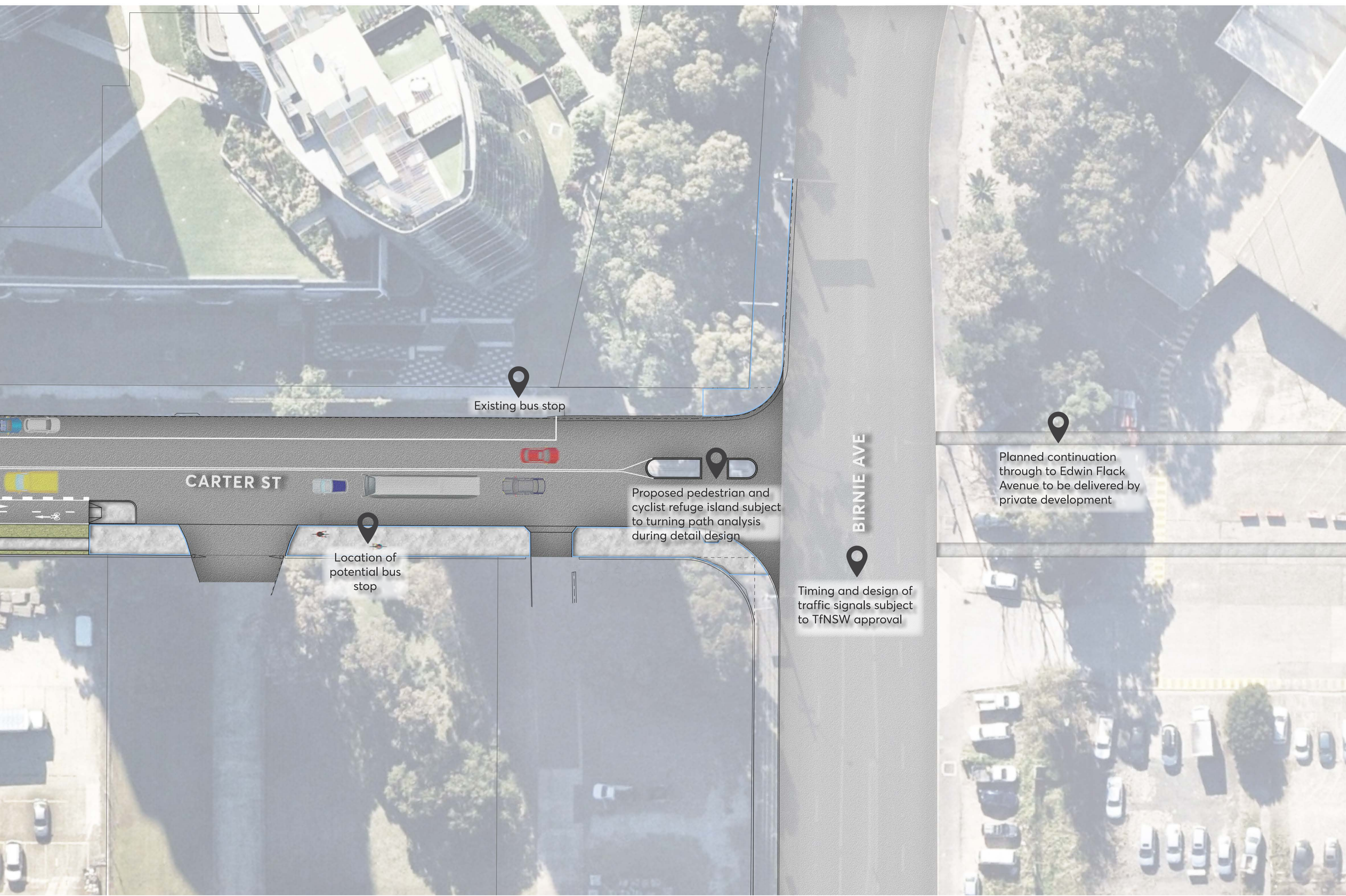


UHRIG RD

Existing bus stop

CARTER ST





Existing bus stop

CARTER ST

Location of potential bus stop

Proposed pedestrian and cyclist refuge island subject to turning path analysis during detail design

BIRNIE AVE

Timing and design of traffic signals subject to TfNSW approval

Planned continuation through to Edwin Flack Avenue to be delivered by private development